

2D/1D Imager
Barcode Scanner



SocketScan® S740

Ergonomic and Elegant

The SocketScan S740 universal barcode scanner with Bluetooth wireless technology scans either 1D or 2D barcodes on paper or screen. It has a lightweight, ergonomic structure, and a long-lasting battery to withstand entire work days. The lights for battery, Bluetooth and scanning notifications make the scanner more intuitive to use. The S740 is designed to be software compatible with all applications. Updates on operating systems may alter the devices' performance.

For the most reliable and consistent performance, please verify with your application provider that Socket Mobile's latest Capture SDK was implemented in your app.

This scanner is ideal for retail POS, field service, inventory management, asset tracking and more. Use our Companion App for easy set up and configuration.



Certified by Apple® for iOS devices (iPad®, iPhone®, iPod Touch®) and compatible with Android and Windows®.

Features

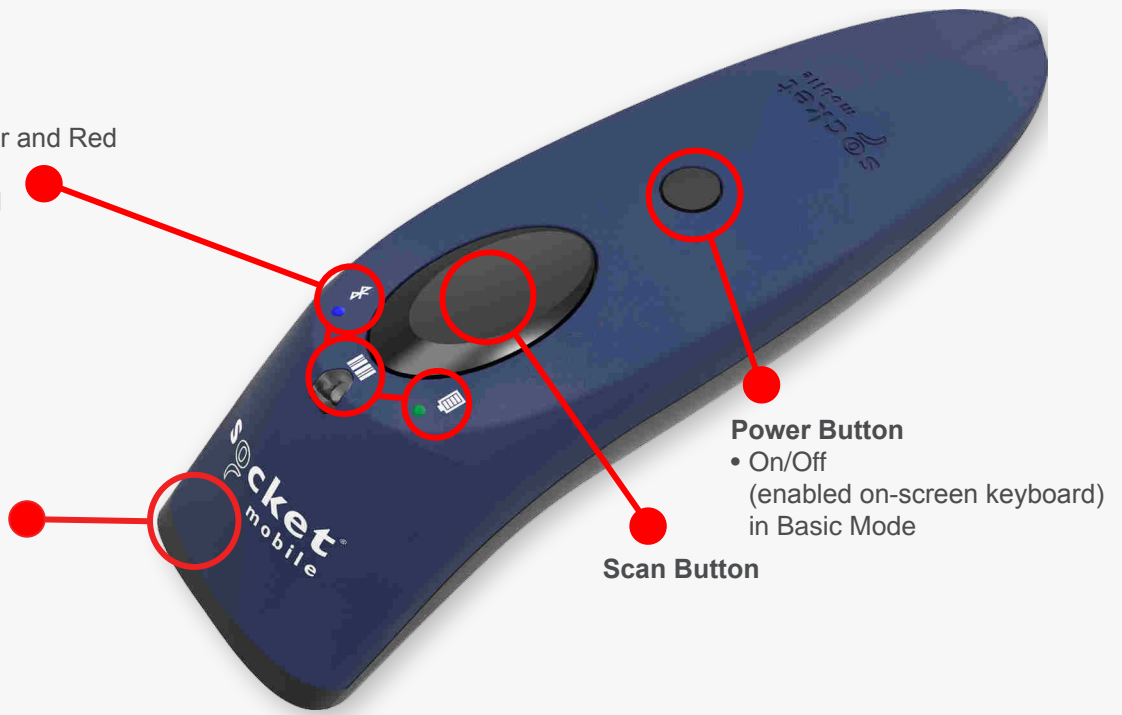
- **Bluetooth Wireless Technology** - Connects easily to a wide range of Bluetooth enabled smartphones, tablets, notebook and desktop computers
- **Certified by Apple® for iOS devices** – Guaranteed Compatibility - With Capture SDK integrated in over 700+ applications, Socket Mobile scanners are one of the most natively integrated scanners available today. Socket Mobile Scanners are also 100% compatible with any application out-of-the-box in HID (keyboard emulation) mode.
- **Compatible with all Android and Windows devices and applications**
- **Scanning** – Fast 2D, 1D and omni-directional ability, allowing intuitively rapid barcode scanning with highly visible and safe LED aimer
- **Auto Mode** - Presentation Mode (automatic scanning) provides continuous scanning capabilities without pressing the scan button
- **LED Aimer** - Bright, rectangular illumination field with LED dot for precise aiming
- **Exceptional Ergonomics** - Small, lightweight, and fits perfectly in the hand for comfortable use over extended periods
- **User Indicators** – Intuitive LEDs, Bluetooth connection, battery level and scanning status
- **User Feedback** - Audible tones and hand pulsation
- **Long-Lasting Battery** - Power to last over 16 hours
- **Replaceable Battery** – 2 AA NiMH rechargeable batteries
- **Protective Material** - Made with antimicrobial material for protection against potentially harmful bacteria
- **Color Options** - Black, Blue, green, red, white and yellow colors enable corporate-branding personalization and is easy to find in busy work environments
- **Application Integration** – Socket Mobile's Capture SDK enables easy integration in your applications to improve business productivity with fast, efficient and reliable data transfer over Bluetooth wireless technology
- **Wearable** - Includes wrist strap. Holster, lanyard and retractable clip available (sold separately)
- **Designed and Assembled in the USA**
- **Developer Support Available**
- **1-Year Warranty**



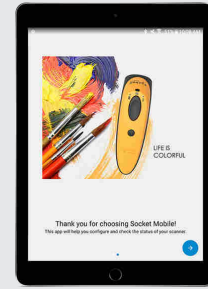
Intuitive LED Indicators

- Battery LED: Green, Amber and Red
- Bluetooth LED: Blue
- Scan LED: Green and Red

Weight/Mass
• 4.1 oz. (117 g)



- (1) SocketScan S740, 2D/1D Barcode Imager
- (1) Charging Cable
- (1) Wrist Strap
- (1) Get Started Insert



Socket Mobile Companion
Download for Free!

The S740 is available in 6 colors:



Colors:	S740	S740 w/ Charging Stand	S740 w/ Black Charging Dock	S740 w/ White Charging Dock
Black:	CX3809-2569	CX3812-2572	CX3811-2571	
Blue:	CX3431-1881	CX3535-2137	CX3448-1911	CX3488-1983
Green:	CX3417-1836	CX3533-2135	CX3446-1909	CX3530-2132
Red:	CX3413-1832	CX3531-2133	CX3444-1907	CX3528-2130
White:	CX3419-1838	CX3534-2136	CX3447-1910	CX3487-1982
Yellow:	CX3415-1834	CX3532-2134	CX3445-1908	CX3529-2131

Optional Accessories

Charging Stand



Great for using AutoScan Mode

Charging Dock



Ideal as a desktop charger

Durable Retractable Clip



Provides quick access to scanner
Scanner & Phone Holder

Holster



Safe and accessible placement

Wrist Strap



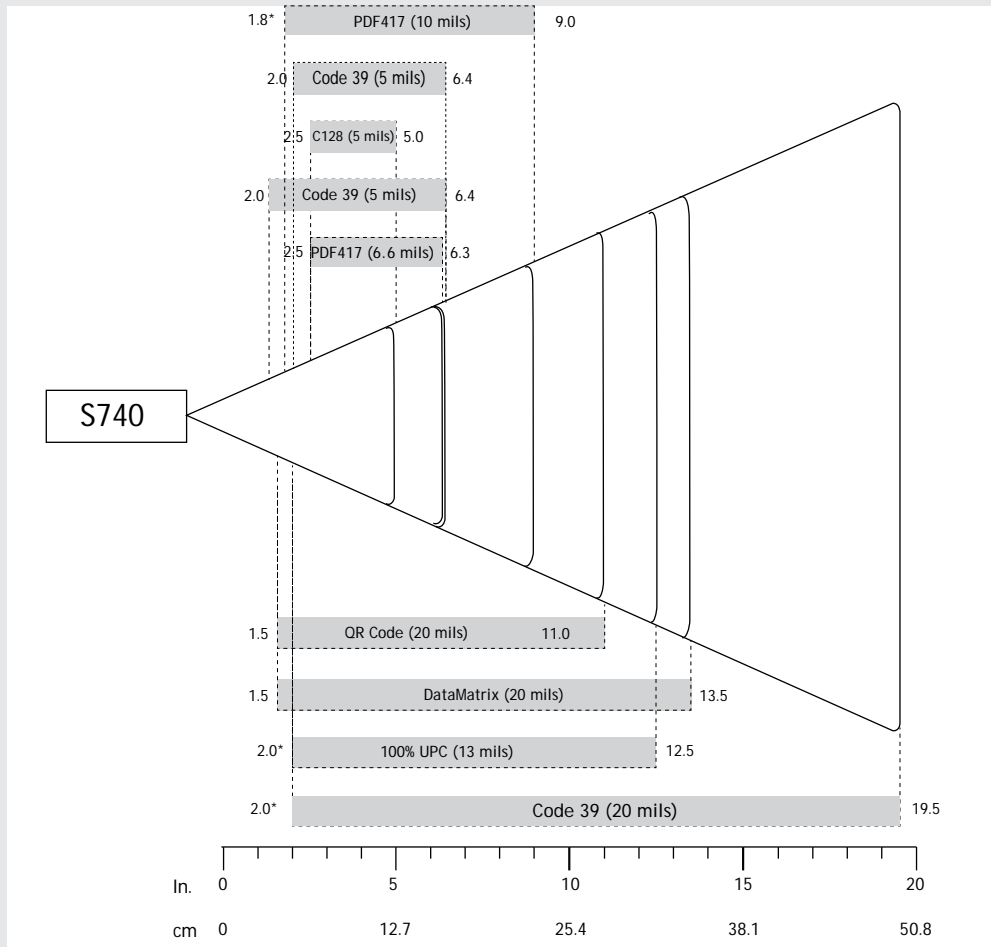
Keeps the scanner at your fingertips



Nice one-handed option

Default Barcode Symbologies:	1D Symbologies: Australia Post, Codabar, Code 39, Code 93, Code 128, EAN-13/JAN, EAN-8/JAN, GS1 Databar, GS1 Databar Expanded Stacked, GS1 Databar Limited, GS1-128, Interleaved 2 of 5, ISBT 128, UPC A, UPC EO 2D Symbologies: Aztec, Data Matrix, Maxicode, Micro PDF417, PDF417
Supported Barcode Symbologies:	1D Symbologies: Australia Post, Bookland EAN, Chinese 2 of 5, Codabar, Code 11, Code 39, Code 93, Code 128, Composite CC-A/B, Composite CC-C, Composite TLC, Discrete 2 of 5, EAN-13/JAN, EAN-8/JAN, GS1 Databar, GS1 Databar Expanded Stacked, GS1 Databar Limited, GS1-128, Interleaved 2 of 5, ISBT 128, ISSN EAN, Matrix 2 of 5, MSI, UPC/EAN/JAN, UPC A, UPC EO 2D Symbologies: Aztec, Data Matrix, Maxicode, Micro PDF417, MicroQR, PDF417, QR Code
Scan Angle:	42° (Horizontal) - 28° (Vertical)
Sensor Resolution:	640 horizontal x 400 vertical pixels
Print Contrast:	Down to 25%

Reading Distance:



4.6 to 49.5 cm (1.5 to 19.5 in.) Depends on barcode size, symbology, label media, scan angle

Decode Ranges

	Near	Far
5 mil Code 39	2.0 in/5.1 cm	6.4 in/16.2 cm
5 mil Code 128	2.5 in/6.3 cm	5.0 in/12.7 cm
6.6 milk PDF417	2.5 in/6.3 cm	6.3 in/16.0 cm
10 mil PDF417	1.8 in/4.5 cm*	9.0 in/22.8 cm
13 mil 100% UPC	2.0 in/5.0 cm*	12.5 in/31.7 cm
20 mil Code 29	2.0 in/5.0 cm*	19.5 in/49.5 cm
20 mil Data Matrix	1.5 in/3.8 cm	13.5 in/34.3 cm
20 mil QR Code	1.5 in/3.8 cm	11.0 in/27.9 cm

Battery:	2 rechargeable, 2000 mAh (LR6) NiMH (replaceable battery)
Charge Time:	~6 Hours
Battery Life - Per Full Charge:	Standby time: over 20 hours Active Scan Time: 70,000 scans within 9 hours based on 2 scans every 1 second 12,000 scans within 15 hours based on 1 scan every 4 seconds
Note:	Battery life varies depending on ambient temperature, ambient light and age of battery.

Bluetooth (wireless connection)

Bluetooth Radio:	Class 2 Bluetooth, version 2.1 + EDR (Enhanced Data Rates) with 56-bit data encryption
Bluetooth Range:	Up to 10 m (33 ft.) depending on environment, range limit is usually due to the Host Device (phone, tablet or notebook)
Bluetooth Profiles:	Basic Mode - Human Interface Device (HID)*, Application Mode - Serial Port Profile (SPP) and Application Mode - MFi-SPP. Some Operating Systems or smartphone/tablet models may support only one profile. <i>*By default, the scanner is set to Basic Mode (HID).</i>

Scanner Type

Technology:	2D/1D Barcode Linear Imager
Light Source:	Hyper Red 660 nm (nanometer) LED
Aimer:	610 nm LED

User Environment

Ambient Light:	From 0 to 100 000 lux. From pitch black to direct sun light
Operating Temperature:	0° to 45° C (32° to 113° F)
Storage Temperature:	-40° to 70° C (-40° to 158° F)
Relative Humidity:	95% at 60° C (140° F) (non-condensing)
Drop Specifications:	4 ft. drop to linoleum

Operating System Compatibility

Android OS - Basic Mode (HID)* & Application Mode (SPP)	Mac OS - Basic Mode (HID)* only
Apple iOS - Basic Mode (HID)* & Application Mode (MFi-SPP)	Windows OS - 10, 8, and 7 - Basic Mode (HID)* & Application Mode (SPP)

Compatible with devices supporting Basic Mode (HID)* protocol

Supported Language Setting in Basic Mode (HID): ANSI, English UK, English, French, German, Italian, Japanese, Polish, Spanish and Swedish

**By default, the factory settings of the Socket Mobile Scanners are set to Basic Mode (keyboard emulation: HID). In order to use the scanner with an application using Capture SDK, the scanner must be configured in Application Mode (Bluetooth Serial Port Profile: SPP)*

Certified by Apple® for iOS devices (iPad®, iPhone®, iPod Touch®) and compatible with Android and Windows®.






Scanner:	Standard one year limited warranty
Accessories:	90 days
Extended Warranty: (sold separately)	www.socketmobile.com/socketcare



Common Uses

Retail/Point of Sale	Mobile Tracking	Transportation	Hospitality
Office use	Shipping & Receiving	Gaming	
Healthcare	Field Sales/Service	Banking	

Certification & Regulatory

Bluetooth SIG:	Declaration ID: D030473 QD ID: 82009
Electrical Safety:	Certified to IEC 60950-1, UL 60950-1, CAN/CSA C22.2
Environmental:	Environmental: RoHS EN 50581
EMI / RFI:	FCC Part 15 Class C, RSS 210, iCES 003, C-Tick, CISPR 22, CE EN55022, EN55024, TELEC FCC ID: T9J-RN42 IC ID: 6514-RN42 Telec: 201-125799
LED Safety:	IEC/EN 62471 (EXEMPT GROUP)



socketmobile.com

sales@socketmobile.com

Toll-Free: +1 800 552 3300 (USA/Canada)

Asia Pacific: +1 510 933 3122

EMEA & Russia: +41 62 834 0780

France: +33 970 462 241

Germany: +49 9401 5299 052

Japan: +8190 9808 0518

Latin America: +1 510 933 3153

Switzerland: +41 62 834 07 80

UK/Ireland/South Africa: +44 (0) 1252 761403
+44 7787 112109