



The memory & storage experts™

HOW TO INSTALL A CRUCIAL® SSD IN YOUR COMPUTER



Installing a Crucial SSD is easy and makes your computer significantly faster!



PART 1: PREPARE



1. Gather supplies

You will need your system. A screwdriver. A Crucial SSD. A SATA-to-USB cable. And your system's owner's manual. If you don't have a SATA-to-USB cable, you can get one in the Crucial SSD Install Kit, which is sold separately.



2. Set the spacer aside

As you take your SSD out of its box, you'll see this – it's called a spacer, but not all SSD models come with one. Set this aside for now. It won't come into play until later in the process, and based on your system, you may not even need it.



3. Back up important files

Before starting the actual installation, take a few moments to save any important files on your computer to an external storage drive or a USB drive.



4. Go slowly and deliberately

The information you need is all here. Your system will likely look different than the ones shown, but the process is the same. Read each step thoroughly and consult our **Helpful Tips** for more info.

HELPFUL TIP

For Mac installations, follow our Mac-specific steps at www.crucial.com/mac-ssd-install since the process is significantly different and not all Mac systems are upgradeable.

Amount of data on old hard drive	Time it may take to copy to new SSD
Less than 256GB	20-30 minutes
256-512GB	30-60 minutes
512GB-1TB	60-90 minutes
More than 1TB	90+ minutes

DID YOU KNOW...?

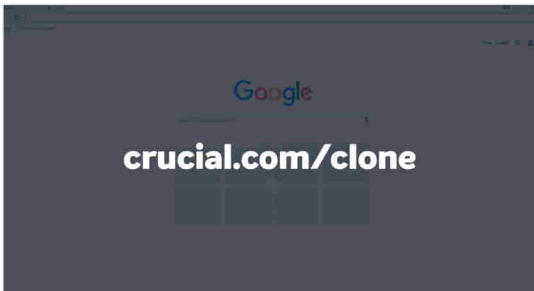
The longest part of the SSD install process is copying everything from your old drive to your new SSD. Before you start, get a sense of how long this'll take by referring to our chart on the left.

PART 2: COPY



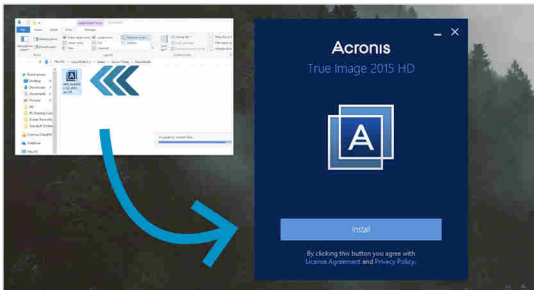
1. Connect the SSD to your system

Get started by using the SATA-to-USB cable to connect the SSD to your computer. When handling your SSD, don't touch its gold connector pins with your fingers.



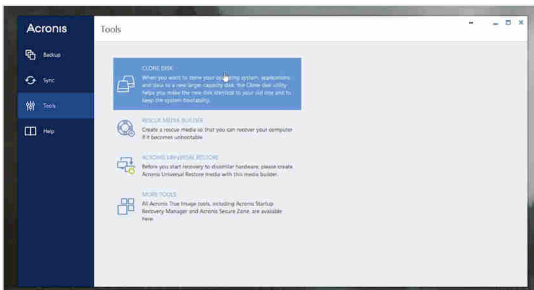
2. Download the software that copies your old drive to your new SSD

Now it's time to download the software that copies your old storage drive to your new SSD. On the computer your SSD is connected to, go to the website shown on the screen to download it. [Crucial.com/clone](https://www.crucial.com/clone)



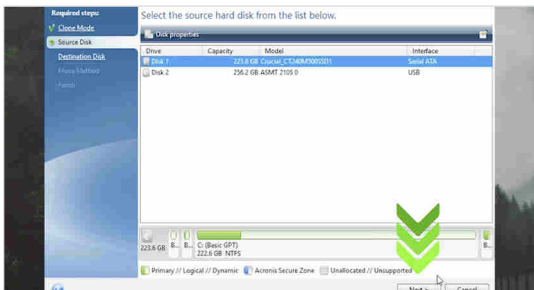
3. Install the software you downloaded

Install this software by opening the file you just downloaded and accepting all the prompts. A screen will pop up where you'll need to click **Install**. Once the installation is complete, start Acronis.



4. Prepare to copy or "clone" your data

You'll now see several options in the software. Select the **Clone Disk** option. You'll then be asked to select a clone mode. If you've never done this before, we recommend the **Automatic** method, then click the **Next** button.



5. Select source and destination drives (disks)

Acronis will now ask you to select your "source" drive, which is your existing drive. Select it by clicking on it, then click **Next**. Now select your "destination" disk – your new SSD. Since your SSD is currently plugged into a USB port, the interface column will say "USB" and that's how you know which drive to select for your destination disk. Select it, then click **Next**. On the following screen, click **Proceed** to start copying your data.



6. Wait for your data to copy

At this point, it's time to kick back and relax for a bit, since it'll take a while for everything to copy. The software might make your computer shut down or restart, which is OK. Once everything has copied over, watch the next video in this series to see what to do next.

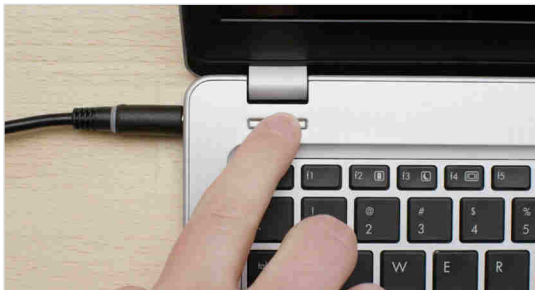
HELPFUL TIP

If your old storage drive is 128GB (for example) and you copy its contents to a 275GB SSD, the SSD may show up in your system as a 128GB drive, even though it's actually the size that you bought. No need to fear – you can still store more on it, but you'll need to make some adjustments to the drive's settings. This doesn't usually happen, but if it does, we want to let you know that it's OK and that it's based on your system, not you.

DID YOU KNOW...?

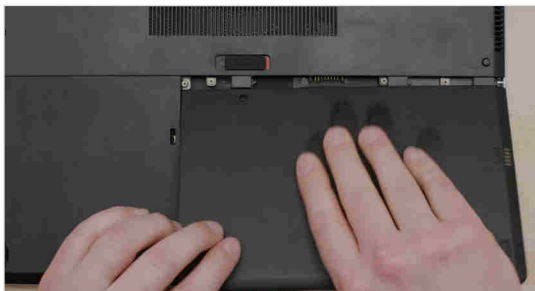
Millions of people have used this software to copy data, from everyday home users with passwords and precious home photos to corporate users who have lots of proprietary information. The security and privacy of your data is important to us, and we don't compromise that. Copying is a safe, secure process.

PART 3: INSTALL



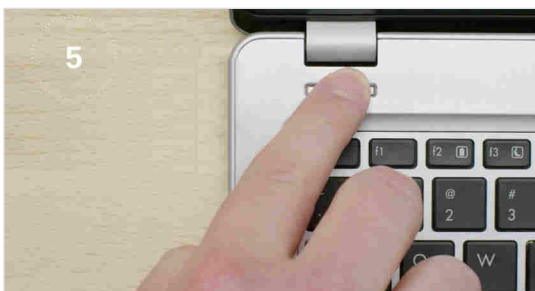
1. Shut down your system

Start off by shutting down your system. Once it's off, unplug the SATA-to-USB cable from your system and remove the cable from your SSD.



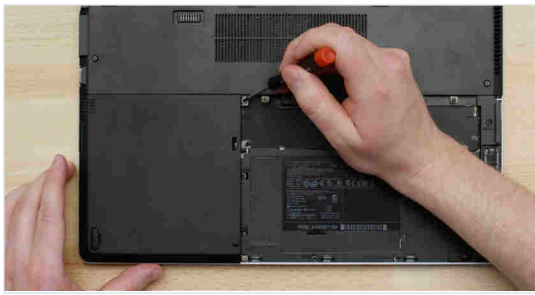
2. Remove the power cable and battery

Now remove the power cable and battery. Note that the battery removal step only applies to laptops when it's possible to remove the battery. To see how to do this on your system, refer to your owner's manual.



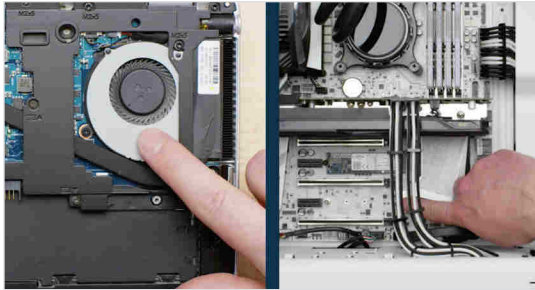
3. Hold the power button for 5 seconds

Now that the battery is out, hold your power button for 5 seconds, which discharges any electricity still in the system.



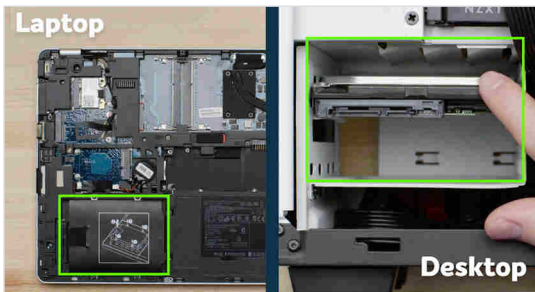
4. Open the case

Now it's time to open your system's case. How you do this really varies from system to system, so consult your owner's manual for what you need to do. The process is also different on a desktop versus on a laptop, so we'll show you both.



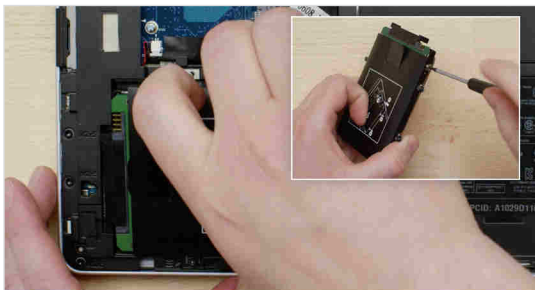
5. Ground yourself

You'll now see your system's components and there's nothing to fear! Simply ground yourself by touching an unpainted metal surface like the ones shown. Grounding protects your system's components from the static electricity that's naturally present in your body – it's an extra safeguard.



6. Locate the storage bay

Now locate your storage bay. This is where your existing hard drive is situated, and it's usually easy to find in desktops. In laptops, however, the location will vary and it might be under the bottom panel, under the keyboard, or on the side. Refer to your owner's manual for the exact location, as every system looks slightly different.



7. Remove your old drive

Remove your old storage drive by disconnecting any cables and brackets attached to it. Often you have to look closely at the drive for screws either on the top or on the sides that might be holding brackets, pull tabs, or supporting frames to the drive. Remove these and attach them in a similar manner to your SSD.



8. Reattach cables and brackets to SSD

BRACKETS, ADAPTERS, SUPPORT FRAMES, BRACES, PULL TABS, SCREWS

Now plug the SSD into your system. Don't worry if the label faces up or down, as this will vary from system to system. When plugging in the SSD, don't force the connection. It should go in easily, and the drive should fit snug. If it's wobbly, and you're installing into a laptop, look closely again at the old drive you removed for any brackets, adapters, support frames, braces, pull tabs, or screws that might be attached to it.



9. Reassemble your system

Once the SSD is securely seated in the storage bay, put your system back together and reconnect the battery if installing into a laptop.



10. Turn on your computer

This next part is the fun part: watch how fast your computer boots up!

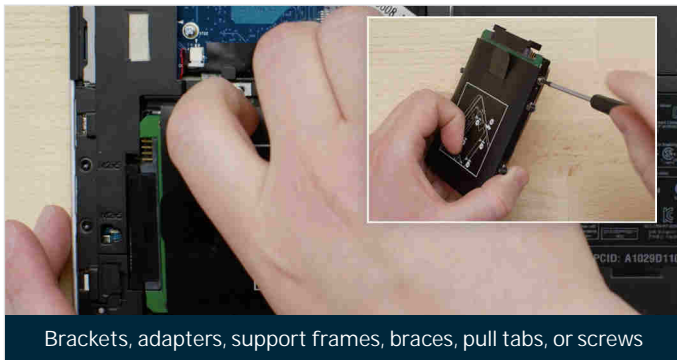


11. Have some fun

Now try clicking on some of your favorite apps to see how fast they load. This is the power of your new SSD, but you're not done yet!

HELPFUL TIP

When you first slot your SSD into the storage drive bay, it might not fit securely. If this occurs, here's what to do based on the type of system you're installing into.



Brackets, adapters, support frames, braces, pull tabs, or screws



Spacer

For laptops

Look closely at the old storage drive you removed for any brackets, adapters, support frames, braces, pull tabs, or screws that might be attached to it. If anything is attached to the old drive, remove it and put it on the SSD in the same manner. Now reinsert the SSD into the storage bay. If it still doesn't fit snug, use the spacer you set aside earlier and attach it to the SSD by peeling off the adhesive and sticking it onto the drive as shown. Attaching the spacer allows the SSD to achieve the same level of thickness as the existing drive you removed. Note: Many installations don't require the spacer, so you may not need to use it.

For desktops

Some storage bays and existing hard drives are significantly larger than a standard size SSD. If this is the case in your system, you'll need a 2.5-inch to 3.5-inch converter to make the SSD fit snug. You can get one of these on www.crucial.com.



DID YOU KNOW...?

Millions of people around the world have made their computers faster by installing a Crucial SSD. No computer skills are required!

PART 4: DOWNLOAD



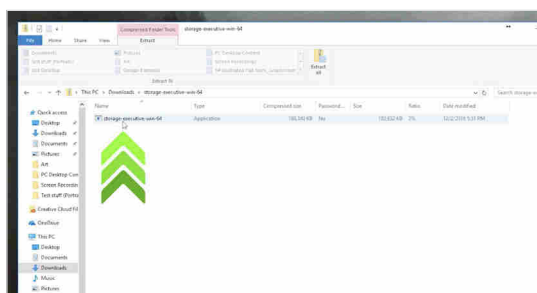
1. Enable Storage Executive

On the computer you installed the SSD in, go to crucial.com/se



2. Click on one of the "download" buttons

Then click on one of the "download" buttons on the page.



3. Install and run Storage Executive

Open Storage Executive by clicking on the file you just downloaded. If it doesn't open right away, double click on it, then save it to your desktop and open it from there. Follow the onscreen prompts and instructions to install and start using the software.



4. Enable Momentum Cache and make your SSD even faster

In the left menu, click on the **Momentum Cache** menu option, which will take you to a new screen where you can click the button that enables the feature. This will force your computer to restart, which is normal. Note that Momentum Cache doesn't work with RAID arrays, but if you don't know what that means, no need to worry. Once you've enabled Momentum Cache, you're done.

HELPFUL TIP

Download the 64-bit version of the software if you have a 64-bit operating system (most users).
 Download the 32-bit version if you have a 32-bit operating system. Not sure which one you have?
 Follow the steps in our chart below.

Operating system

How to know if you have the 32-bit or 64-bit version

Windows® 10

In the **Start** menu, type **This PC** into the Windows search bar, but don't hit enter. Right click on the **This PC** option that displays, then select **Properties** and your type of operating system will be displayed onscreen.

Windows® 8

Move your mouse to the upper right side of the screen and click on the search tool that appears. Type **Computer** into the search field, then right click on it and select **Properties**. Your type of operating system will be displayed onscreen.

Windows® 7

In the **Start** menu, right click on **Computer**, then select **Properties** and your type of operating system will be displayed onscreen.

If you see anything other than 64-bit, download the 32-bit version of the software.

DID YOU KNOW...?

You can use Storage Executive to see how much storage you've used, monitor your drive's temperature, and enable the **Momentum Cache** feature, which makes many SSD operations up to 10x faster.



Congratulations!

Now that you're an expert installer, watch out!
Your friends and family might start asking you to do their installs ;)

Customer Service and Technical Support

North and South America

<http://www.crucial.com/usa/en/support-contact>

Asia, Australia, and New Zealand

ANZ: <http://www.crucial.com/usa/en/support-contact>

JP: <http://www.crucial.jp/jpn/ja/support-contact>

CN: <https://www.crucial.cn/采购咨询>

Europe

UK: <http://uk.crucial.com/gbr/en/support-contact>

FR: <http://www.crucial.fr/fra/fr/aide-contact>

DE: <http://www.crucial.de/deu/de/support-kontakt>

IT: <http://it.crucial.com/ita/it/assistenza-contatti>

VERSION: 10/31/18

©2017-2018 Micron Technology, Inc. All rights reserved. Footage is for representational purposes only. Information, products, processes, and/or specifications are subject to change without notice. Neither Crucial nor Micron Technology, Inc. is responsible for omissions or errors in typography or photography. Micron, the Micron logo, Crucial, and the Crucial logo are trademarks or registered trademarks of Micron Technology, Inc.

crucial
by **micron**