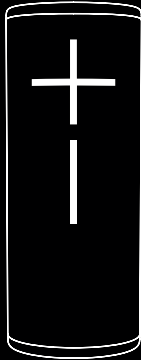




LET'S GET STARTED

### INSIDE THE BOX



MEGABOOM 3



QUICK CHARGING ADAPTER

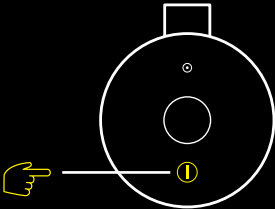


MICRO USB CABLE

### GET STARTED

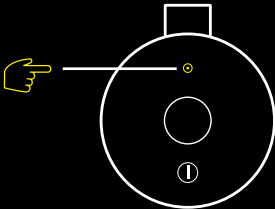
#### 1 POWER ON THE SPEAKER

SHORT PRESS the Power button to turn on your MEGABOOM 3.



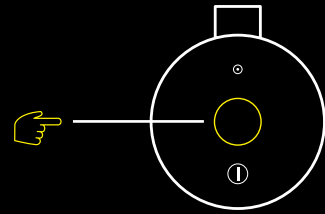
#### 2 PAIR YOUR PHONE TO THE SPEAKER

PRESS AND HOLD the Bluetooth® button to put it in pairing mode. Go to Bluetooth® setting on your phone and select MEGABOOM 3 to connect.



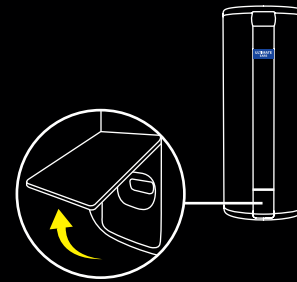
## USE THE MAGIC BUTTON

USE THE MAGIC BUTTON TO CONTROL YOUR MUSIC  
SHORT PRESS to play and pause  
DOUBLE PRESS to skip a track



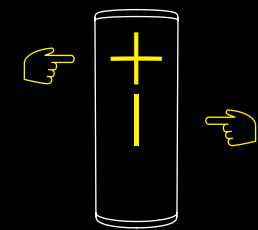
## CHARGE YOUR SPEAKER

LIFT THE WEATHER DOOR to charge using the USB cable.



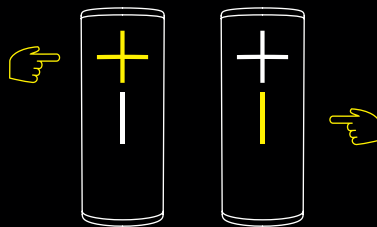
## CHECK BATTERY LEVEL

SIMULTANEOUSLY PRESS the "+" / "-" button to check battery level.

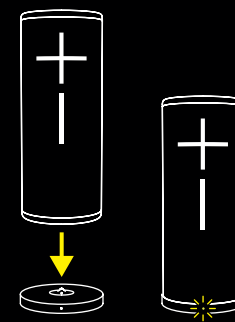


## ADJUST VOLUME

Press the "+" / "-" button to increase / decrease volume.



You can also charge your speaker by placing it on POWER UP charging dock (sold separately).



## DOWNLOAD APP

DOWNLOAD THE ULTIMATE EARS BOOM & MEGABOOM APP to explore the other great features such as Remote Power ON/OFF, Equalizer, PartyUp and using Magic Button to set up your playlists.

