

AVer



PTC310UV2

AI Auto Tracking PTZ Camera



AI



PRECISION MATTERS

The PTC310UV2 AI Auto Tracking PTZ Camera makes powerful and reliable Pro AV capability available to everyone. Drawing inspiration from the AVer Professional PTZ Camera family, the PTC310UV2 features in-house AI functions like Presenter Mode, Zone Mode, and Hybrid Mode auto tracking, thanks to Human Detection processing. Combine the 12X Optical Zoom lens and 4K resolution with hybrid auto tracking and smooth PTZ functions for broadcasting, streaming, or recording. Your exciting journey of audio and video capturing starts here!



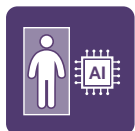
4K Ultra HD Resolution



12X Optical Zoom



IP/HDMI/
USB/3G-SDI



Human Detection AI



Presenter Mode



Zone Mode



Hybrid Mode



Intuitive Web UI



Upside-Down Installation

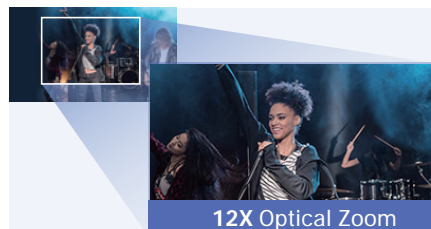
4K Output Resolution

Equipped with 4K resolution, the PTC310UV2 provides ultra-precise auto tracking. The PTC310UV2 also features a Sony sensor that maintains a truly impressive video performance through every frame of your production.



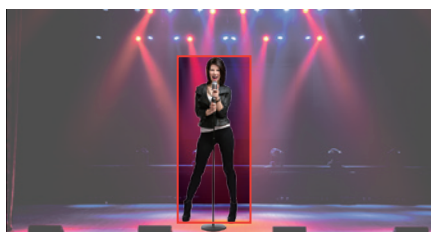
12X Optical Zoom

The zoom power of the PTC310UV2 camera reaches an incredible 144X (including 12X Digital Zoom). It works even while the camera is panning and tilting, allowing you to highlight content and rapidly change shooting angles. Operate a closer and clearer video feed with the unbeatable PTZ performance of the PTC310UV2.



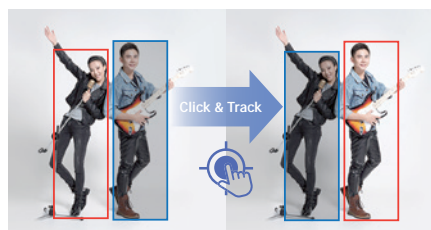
Human Detection AI

Welcome AVer's most advanced AI tool yet—Human Detection. This highly accurate processing function enables PTC310UV2 to easily detect and capture human forms and moving objects in seconds. Never miss a tracking target again.



Click & Track

Redirect focus in an instant with the PTC310UV2. Simply click on a target to quickly adjust the shooting angle and initiate precise tracking. This advanced feature is easy for anyone to operate via both remote control and intuitive Web UI.



Presenter Mode

Track your target everywhere with Presenter Mode. This feature gives presenters the flexibility to leave the stage and interact with the audience, all while being continuously tracked. The camera stays locked on its target, even if other people or objects get in the way.



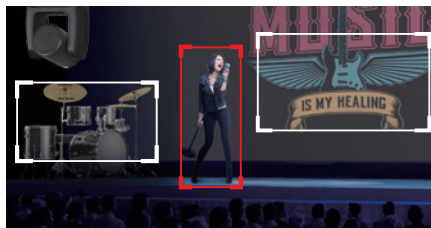
Zone Mode

Zone Mode enhances your ability to capture content on multiple displays. Create up to four content zones to steadily capture the content on display rather than the presenter's movements.



Hybrid Mode

Hybrid Mode provides the utmost freedom of movement for performing artists. Preset effective areas for Zone Tracking in advance, and once you step into those areas, you will be targeted together with the content. When you are outside, you are just like in Presenter Mode.

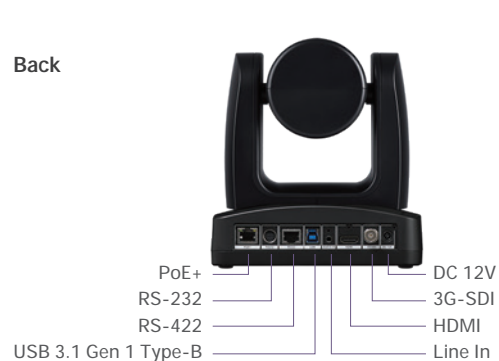


Product Specifications

Camera		AI Auto Tracking Functions	
Image Sensor	1/2.8" 4K Exmor CMOS	Tracking Modes	Presenter Mode, Zone Mode, Hybrid Mode
Effective Picture Elements	8 Megapixels	Interface	
Output Resolutions	4K/30, 4K/29.97, 4K/25, 1080p/60, 1080p/59.94, 1080p/50, 1080p/30, 1080p/29.97, 1080p/25, 1080i/60, 1080i/59.94, 1080i/50, 720p/60, 720p/59.94, 720p/50	Video Outputs	3G-SDI, HDMI, IP, USB
Minimum Illumination	0.5 lux (IRE50, F1.6, 30fps)	Audio Outputs	3G-SDI, HDMI, IP, USB
S/N Ratio	≥ 50 dB	Audio Inputs	MIC in, Line in
Gain	Auto, Manual	General	
TV Lines	1400 (Center/Wide)	Power Requirement	AC 100 - 240V to DC 12V/5A
Shutter Speed	1/1 to 1/32,000 sec	Power Consumption	19W
Exposure Control	Auto, Manual, Priority AE (Shutter, IRIS), BLC, WDR	PoE	PoE+
White Balance	Auto, Manual, ATW, One Push	Dimensions (W x H x D)	180.0 x 192.0 x 145.0 mm
Optical Zoom	12X	Net Weight	2.0 (±0.1) kg
Digital Zoom	12X	Application	Indoor
Total Zoom	144X	Tally Lamp	Yes
Viewing Angles	DFOV : 78° (Wide) to 7° (Tele) HFOV : 70° (Wide) to 6° (Tele) VFOV : 42° (Wide) to 3° (Tele)	Security	Kensington Slot
		Remote Control	Infrared
		Operating Conditions	Temperature : 0 °C to +40 °C Humidity : 20% to 80%
Focal Length	f = 3.9 mm (Wide) to 46.8 mm (Tele)	Storage Conditions	Temperature : -20 °C to +60 °C Humidity : 20% to 95%
Aperture (Iris)	F = 1.6 (Wide) to 2.8 (Tele)	IP Streaming	
Minimum Working Distance	0.3 m (Wide), 1.5 m (Tele)	Resolution	4K 30fps
Pan / Tilt Angles	Pan : ±170°, Tilt : +90° / -30°	Network Video Compress Formats	H.264, H.265, MJPEG
Pan / Tilt Speed (Manual)	Pan : 0.1° to 100° / sec, Tilt : 0.1° to 100° / sec	Maximum Frame Rate	4K 30fps
Preset Speed	Pan : 200° / sec, Tilt : 200° / sec	Bit-Rate Control Modes	VBR, CBR (selectable)
Preset Positions	10 (IR), 255 (RS-232, RS-422, IP)	Range of Bit-Rate Setting	512 Kbps to 32 Mbps
Camera Control - Interfaces	RS-232 (DIN8), RS-422 (RJ45), IP	Network Interface	10 / 100 / 1000 Base-T
Camera Control - Protocols	VISCA (RS-232 / RS-422 / IP), PELCO-D & PELCO-P (RS-232 / RS-422), CGI (IP)	Multi-Stream Capability	2 (RTSP / Web Page), 4K 30fps (max.)
Image Processing	Noise Reduction (2D / 3D), Flip, Mirror	Network Protocols	IPv6, IPv4, TCP, UDP, ARP, ICMP, IGMP, HTTP, DHCP, RTP / RTCP, RTSP, RTMP, VISCA over IP
Power Frequencies	50 Hz, 60 Hz	NDI® HX Capability	License Upgrade
Audio		USB	
Channels	2ch Stereo	Connector	USB 3.1
Codecs	AAC-LC, PCM	Video Formats	MJPEG, YUY2
Privacy Protection Mechanism		Maximum Video Resolution	2160p
Protection Mode	Sleep Mode	USB Video Class (UVC)	UVC 1.1
Web UI		USB Audio Class (UAC)	UAC 1.0
Live Video Preview	Yes	Software Tools	
Camera PTZ Control	Pan, Tilt, Zoom, Focus, Preset Control	IP Search and Configuration Tool	Support Windows® 7 or later
Camera / Image Adjustment	Exposure, White Balance, Picture	PTZ Management	Support Windows® 7 or later
Network Configuration	DHCP, IP Address, Gateway, Subnet Mask, DNS	PTZ Control Panel	Supports iOS & iPadOS® 11 or later
Warranty		PTZ Link	Supports Windows® 7 or later, macOS® 10.14 or later
Camera	5 Years	OBS Plugin for PTZ Cameras	Supports Windows® 8 or later, macOS® High Sierra v10.13 or later
Accessories	1 Year	CaptureShare	Supports Windows® 7 or later, macOS® 10.14 or later
Package Contents			
Camera, Drilling Paper, Ceiling Mount Bracket (x2), Quick Start Guide, Cable Fixing Plate, M2 x 4 mm Screw (x3), Power Adapter & Power Cord, 1/4"-20 L=6.5 mm Screw (x2), Remote Control, M3 x 6 mm Screw (x3), DIN 8 to D-Sub 9 Cable, RS-232 In/Out Y Cable, Cable Ties (x4)			
Optional Accessories			
AVer CL01 PTZ Camera Controller, L-Type Ceiling Mount			

* Specifications may vary depending on location and are subject to change without notice.

Product Appearance



©2023 AVer Information Europe B.V. All rights reserved.
 All brand names and logos are trademarks of their respective companies.

Distributor/Dealer