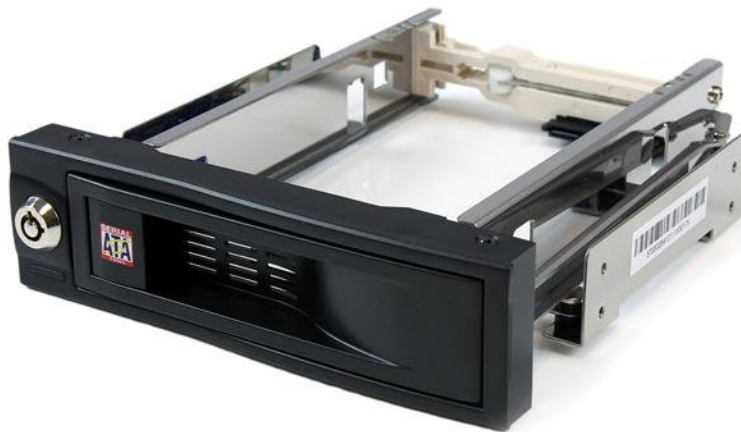


5.25in Trayless Hot Swap Mobile Rack for 3.5in Hard Drive

Product ID: HSB100SATBK



This 3.5in SATA hard drive hot-swap bay allows you to install a 3.5in SATA drive in an available/unused 5.25in drive bay. To remove the drive, it's as simple as opening the front panel door; to re-insert a drive, simply insert the drive (connector first) until the door closes.

The hot swap bay offers a trayless design that makes it the ideal solution for quick and easy drive removals and insertions as part of a system building process, or integration into rackmount systems or industrial environments.

To maximize performance and utilize the full speed potential of your SATA III hard drives, this HDD Backplane supports SATA III for transfer speeds up to 6 Gbps when paired with a compatible controller.

Also a perfect addition for operating system image deployment and any task that requires being able to quickly access large volumes of data on the fly, the hot swap bay provides everything you need to expedite important projects while maintaining a reliable storage solution.

With support for SATA HDD speeds up to 6.0 Gbps, the mobile rack/backplane is fully compatible with RAID installations to ensure maximum performance and versatility for enhanced storage applications.

Designed to provide a durable and reliable operating experience, the mobile rack features a 50,000+ insertion rating and is backed by StarTech.com's 2-year warranty.

Certifications, Reports and Compatibility



Applications

- Add additional hot-swap bays to a server or workstation computer
- Replace or upgrade old IDE backplane with a SATA backplane
- System builders who need to image drives quickly and efficiently
- Environments where drives need to be replaced/removed regularly, without external protection for the drives required after removal
- Be able to replace/remove individual drives from a storage array with minimal or no system down time

Features

- Holds a 3.5" SATA drive in a front accessible 5.25" bay
- Trayless design: drives are not mounted into separate trays/enclosures
- Lockable drive bay
- Internal rubber shock absorbers
- 50,000+ insertion rating
- Power and Activity LED indicator
- Support for SATA revision I/II/III (1.5/3.0/6.0 Gbps)
- Supports 3.5" form factor SATA hard drives
- Plug-and-Play and Hot-Swap compatible

Hardware	Warranty	2 Years
	Compatible Drive Types	SATA
	Drive Size	3.5in
	Front Door Key Lock	Yes
	Number of Drives	1
Performance	Hot Swap Capability	Yes
	Insertion Rating	50,000+ Cycles
	Temperature Alarm	No
Connector(s)	Drive Connectors	1 - SATA (7 pin, Data) Receptacle 1 - SATA Power (15 pin) Receptacle
	Host Connectors	1 - SATA (7 pin, Data) Plug 1 - SATA Power (15 pin) Plug
	OS Compatibility	OS independent; No software or drivers required
	LED Indicators	1 - Drive Power/Activity
Environmental	Humidity	Operating - 5~85% RH Non-condensing Storage - 5~95%
	Operating Temperature	0°C to 50°C (32°F to 122°F)
Physical Characteristics	Color	Black
	Material	Aluminum and Plastic
	Product Height	1.7 in [4.2 cm]
	Product Length	7.2 in [18.4 cm]
	Product Width	5.9 in [14.9 cm]
	Weight of Product	9.2 oz [261 g]
	Packaging Information	Package Height
Package Length		6.3 in [15.9 cm]
Package Width		8.1 in [20.6 cm]
Shipping (Package) Weight		12.9 oz [366 g]
What's in the Box	Included in Package	1 - 5.25" Tray-Less SATA Hot-Swap Bay 2 - Key 1 - Screw Kit 1 - Instruction Manual

1 - Drive Activity LED and 2 Pin Wire

Product appearance and specifications are subject to change without notice.