



We love that you are rocking JLab!
We take pride in our products and fully stand behind them.

JLAB®
JBUDS WORK
HEADSET



YOUR WARRANTY

All warranty claims are subject to JLab authorization and at our sole discretion. Retain your proof of purchase to ensure warranty coverage.



CONTACT US

Reach out to us at support@jlab.com or visit jlab.com/contact

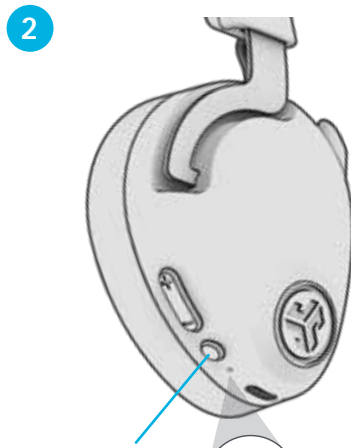
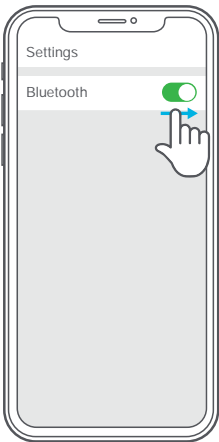
REGISTER TODAY

jlab.com/register

Product updates | How-to tips
FAQs & more

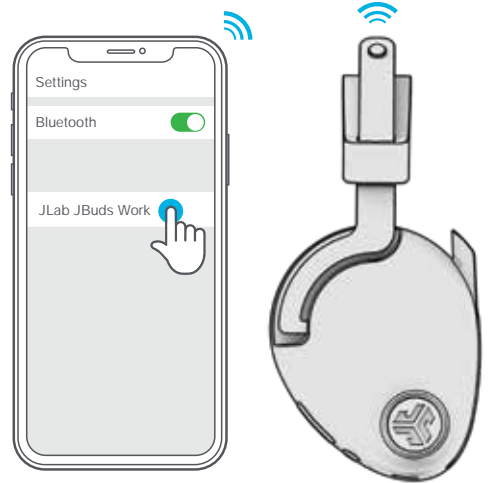
BLUETOOTH PAIRING

- 1 Turn on Bluetooth in your device settings.



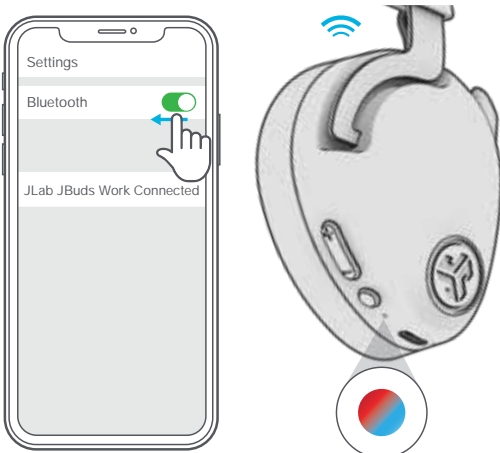
Press and hold button for **8 seconds**. Release. Lights will flash blue/red.

- 3 Select "JLab JBuds Work" in your device settings to connect.

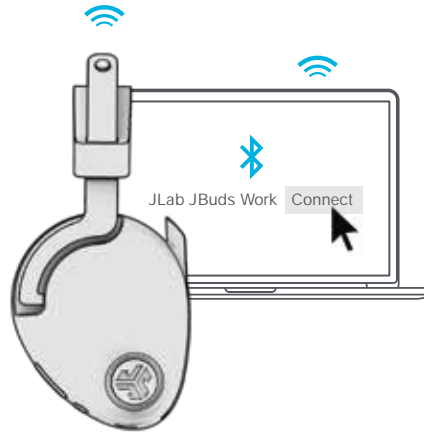


MULTIPOINT (CONNECT 2 DEVICES SIMULTANEOUSLY)

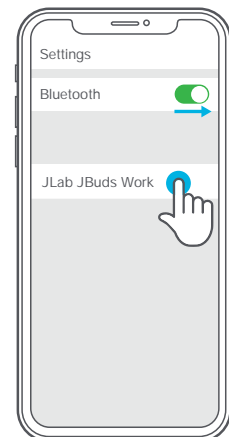
- 1 Once **FIRST** device is connected, turn off Bluetooth in device settings. JBuds Work will auto enter Bluetooth Pairing.



- 2 Enter your **SECOND** device Bluetooth settings and connect to JBuds Work.



- 3 Enter your **FIRST** device settings. Turn on Bluetooth and reconnect to JBuds Work.



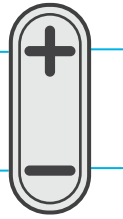
For more info and troubleshooting on MULTIPOINT visit: JLAB.COM/MULTIPOINT

BUTTON FUNCTIONS

VOLUME UP: Press once
TRACK FORWARD: Press and hold 2+ seconds

VOLUME DOWN: Press once
TRACK BACKWARD: Press and hold 2+ seconds

POWER ON/OFF: Press and hold 3+ seconds
PLAY/PAUSE: Press once
ANSWER/HANG UP: Press once
(works when boom mic is in down position)
REJECT INCOMING CALL: Press and hold 1+ second
ACTIVATE SIRI (iOS) OR "OK GOOGLE" (ANDROID): Press twice
HEAR YOURSELF ON/OFF: Triple press
BLUETOOTH PAIRING: See *Bluetooth Pairing*.



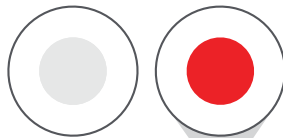
SWITCH EQ VOICE / MUSIC:
Press and hold both buttons simultaneously



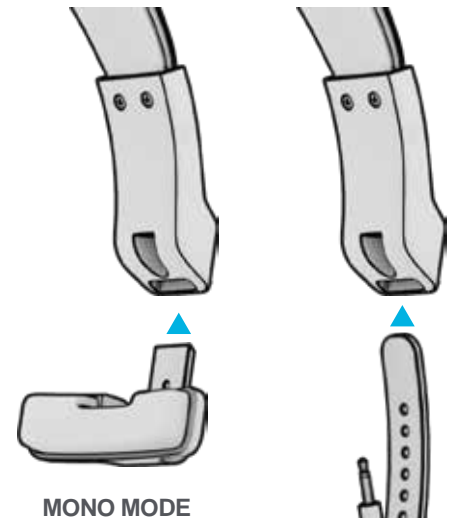
BOOM MICROPHONE

AUTO ANSWER CALL: Rotate down
AUTO HANG UP / REJECT INCOMING CALL:
Rotate up

MUTE OFF MUTE ON



MICROPHONE
MUTE ON / OFF



MONO MODE

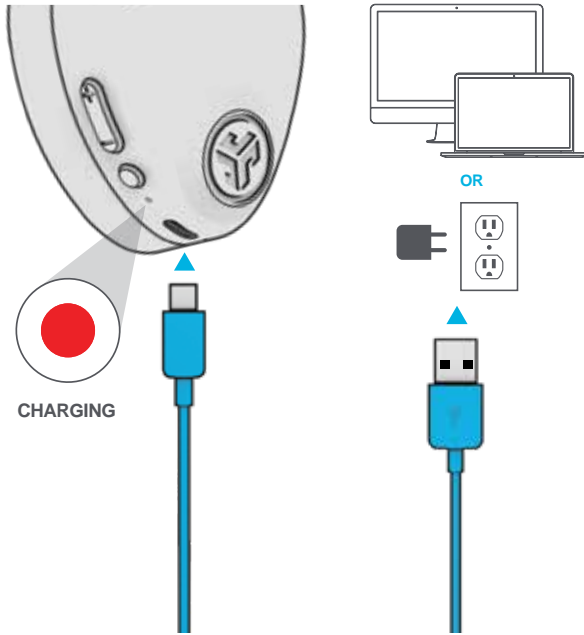


STEREO MODE

CHARGING

Connect to computer or USB 5v 1A (or less) output device.

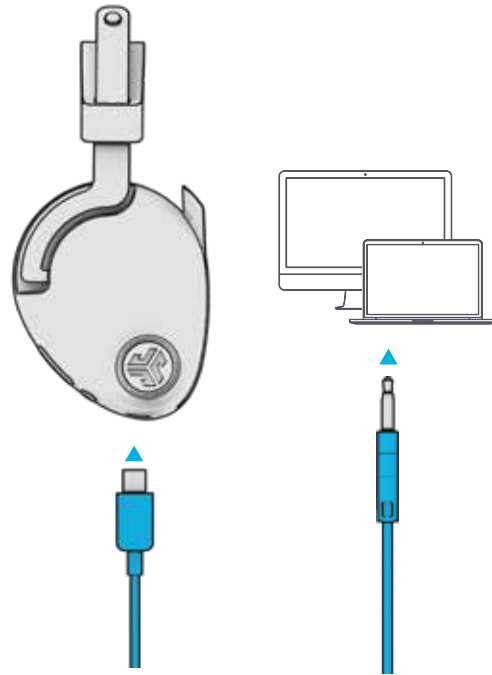
Note: JBuds Work can simultaneously charge while Bluetooth is connected.



AUX INPUT

JBuds Work can be used as a wired headset with AUX cable.

Note: The headset will still use a limited amount of battery for the microphones to function.



CAUTIONS

- Avoid getting moisture or liquids on the headphone cups.
- Avoid extreme heat, cold, and humidity.
- Avoid dropping or crushing headphones, stressing the cable by rapid pulling or extreme force, or bending the cable at a sharp angle.
- Wax may build up in headphone cups, lowering the sound quality. Carefully remove the wax with a cotton swab or other small tool to improve the sound quality.
- If you experience discomfort or pain, try lowering the volume or discontinuing use temporarily.
- If you experience regular discomfort while using this product, discontinue use and consult your physician.
- We recommend you treat your headphones as you would a nice pair of sunglasses and keep them in safe location when not in use.



[Shop products](#) | [Product alerts](#) | [Burn-in your headphones](#)

JLab Store + Burn-in Tool

