

# AMM112

## multipurpose loudspeaker

### Product Overview

The AMM112 multipurpose loudspeaker features a passive, coaxial two-way design with a 3-inch compression driver, 12-inch low-frequency transducer, and high output: 131 dB peak. Its proprietary Beamwidth Matching Waveguide ensures signature Bose sound quality, delivering consistent frequency response, clarity, and projection across the coverage area — a remarkably powerful audio experience for both performers and audiences. The AMM112 is equally suited for a variety of medium-throw sound reinforcement, monitor, and fill applications in permanent or portable sound systems and offers outstanding vocal clarity and projection. The AMM112 features consistent voicing with Bose AM array modules and Bose AMU utility loudspeakers. So it's easy to mix and match models from all three lines to create different types of systems.



### Key Features

**Compact high-output design** delivers 131 dB peak output via coaxial driver: 3-inch compression driver, 12-inch low-frequency driver with shared neodymium magnet

**Multipurpose versatility** for deployment as main, monitor, fill, or delay; extend bandwidth by pairing with the Bose ShowMatch SMS118 subwoofer (FoH applications) or the Bose AMS115 subwoofer (fill applications)

**Consistent tonality and voicing** with Bose AM array modules and Bose AMU utility loudspeakers — easily create entire systems and save substantial time during system configuration

**Proprietary Beamwidth Matching Waveguide** ensures signature Bose sound quality, aligning low and high beamwidth through crossover region to deliver excellent tonal consistency across the coverage area

**Multi-position enclosure with 110° × 60° coverage angle** — easily swap horizontal and vertical coverage by simply rotating cabinet, no disassembly or tools required

**Lightweight 22 kg/49 lb cabinet** with large, ergonomic handles and 35 mm pole cup for easy transportation and setup

**Pair with Bose PowerMatch amps and ControlSpace DSP** for best performance and loudspeaker protection

**Deploy easily in permanent or portable applications** with optional U-bracket and suspension bracket accessories or use the 6 integrated M10 inserts for custom suspension

**Companion AMS115 multipurpose subwoofer also available** — 15-inch transducer, low frequency down to 35 Hz, 130 dB peak output, 28 kg (63 lb) design with integrated M20 threaded pole mount and 12 M10 threaded inserts for suspension in permanent installations

## TECHNICAL DATA

# AMM112

## multipurpose loudspeaker

### Technical Specifications

<b>SINGLE-LOUDSPEAKER PERFORMANCE</b>	
Frequency Response (-3 dB) <sup>1</sup>	70 – 18,000 Hz
Frequency Range (-10 dB)	60 – 20,000 Hz
Nominal Coverage Pattern	110° horizontal × 60° vertical
Tilt-back Angle	35°
Crossover	Internal passive or external bi-amp; use Bose-recommended presets for optimal performance
Power Handling, Long-term Continuous <sup>2</sup>	300 W, passive 300 W (LF) + 45 W (HF), bi-amp
Power Handling, Peak <sup>3</sup>	2800 W, passive 2800 W (LF) + 720 W (HF), bi-amp
Sensitivity (SPL/1 W @ 1 m) <sup>4</sup>	96 dB, passive & bi-amp averaged
Calculated Maximum SPL @ 1 m <sup>5</sup>	121 dB, passive & bi-amp averaged
Calculated Peak SPL @ 1 m	131 dB, passive & bi-amp averaged
<b>TRANSDUCERS</b>	
Low Frequency	12-in (305 mm) woofer
High Frequency	3-in (76 mm) compression driver
Nominal Impedance	8 Ω, passive 8 Ω (LF) + 8 Ω (HF), bi-amp
<b>PHYSICAL</b>	
Enclosure Material	Baltic birch plywood
Finish	2-part spray polyurethane coating, black
Grille	Perforated steel, powder-coated finish, black
Environmental <sup>6</sup>	IP43-rated (front-of-house position only)
Connectors	2 × Neutrik® NL4 inputs with wired-parallel through
Suspension/Mounting	2 × 35 mm (1.4 in) pole cup (for pole-mounting) 6 × M10 threaded inserts (for accessory attachment or mounting)
Dimensions (Width × Height × Depth)	457 mm × 457 mm × 383 mm (18.0 in × 18.0 in × 15.1 in)
Net Weight	22.04 kg (48.60 lb)
Shipping Weight	26.22 kg (57.81 lb)
Optional Accessories	AMM112 U-Bracket Kit; AMM Suspension Bracket; ShowMatch SMS118 Speaker Pole Mount Adaptor, M20 Thread
<b>PRODUCT CODES</b>	
AMM112 Loudspeaker	843161-0110 (AMM112 MULTIPURPOSE LDSPKR)
AMM112 U-Bracket Kit	843364-0010 (AMM112 U-BRACKET)
AMM Suspension Bracket	843344-0010 (AMM SUSPENSION BRACKET)
ShowMatch SMS118 Speaker Pole Mount Adaptor, M20 Thread	863314-0010 (SPKR POLE MNT ADPTR - M20 THREAD)

(1) Frequency response and range measured on-axis in anechoic environment with recommended loudspeaker processing. Frequency response graphs display SPL axis with 0 dB line referenced to sensitivity SPL value.

(2) Bose extended-lifecycle test using pink noise filtered to meet IEC268-5, 6-dB crest factor, 500-hour duration.

(3) Bose peak power test using 12-dB crest factor pink noise, 96-hour duration with recommended loudspeaker processing.

(4) Sensitivity measured in anechoic environment with recommended loudspeaker processing.

(5) Maximum SPL calculated using sensitivity and power ratings, exclusive of power compression.

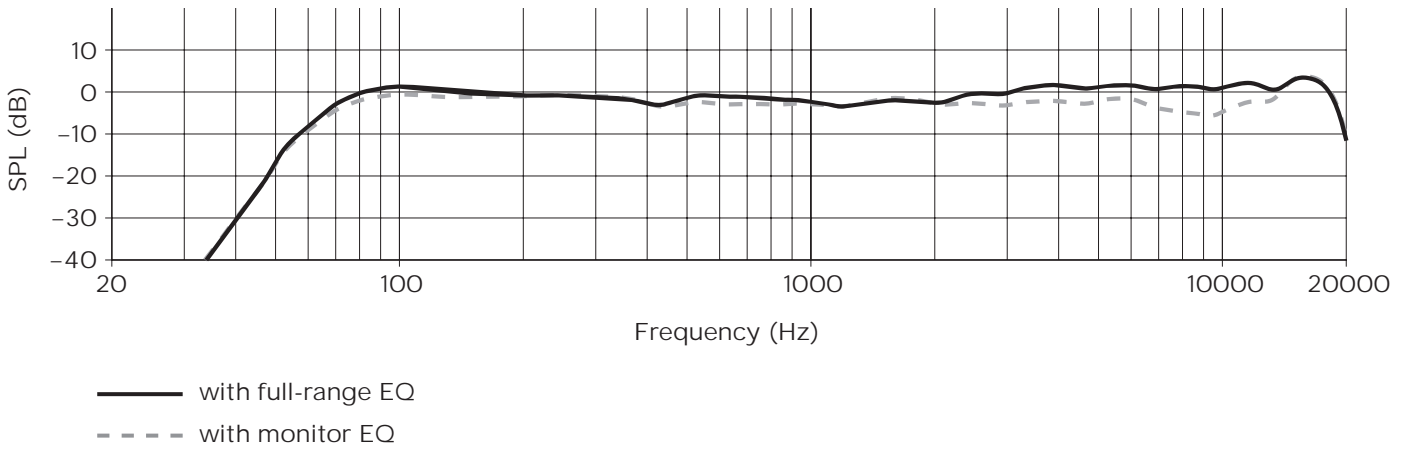
(6) IP43 rating applies when loudspeaker is positioned upright (front-of-house application). Rating does not apply when in tilt-back (monitor application) position.

For additional specifications and application information, please visit [PRO.BOSE.COM](http://PRO.BOSE.COM). Specifications subject to change without notice. 4/2021

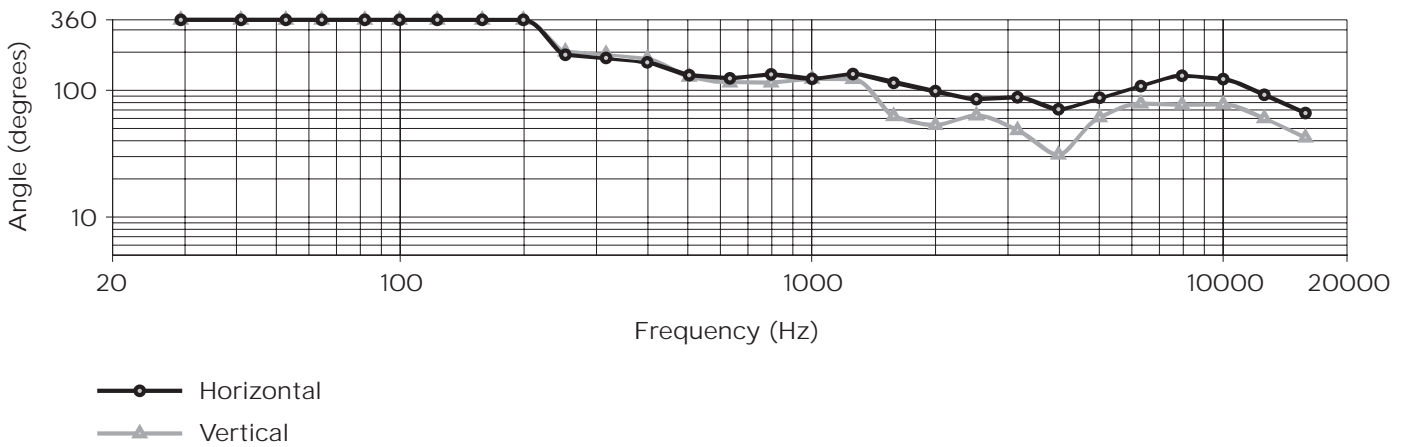
# AMM112

## multipurpose loudspeaker

### Frequency Response <sup>1</sup>



### Beamwidth

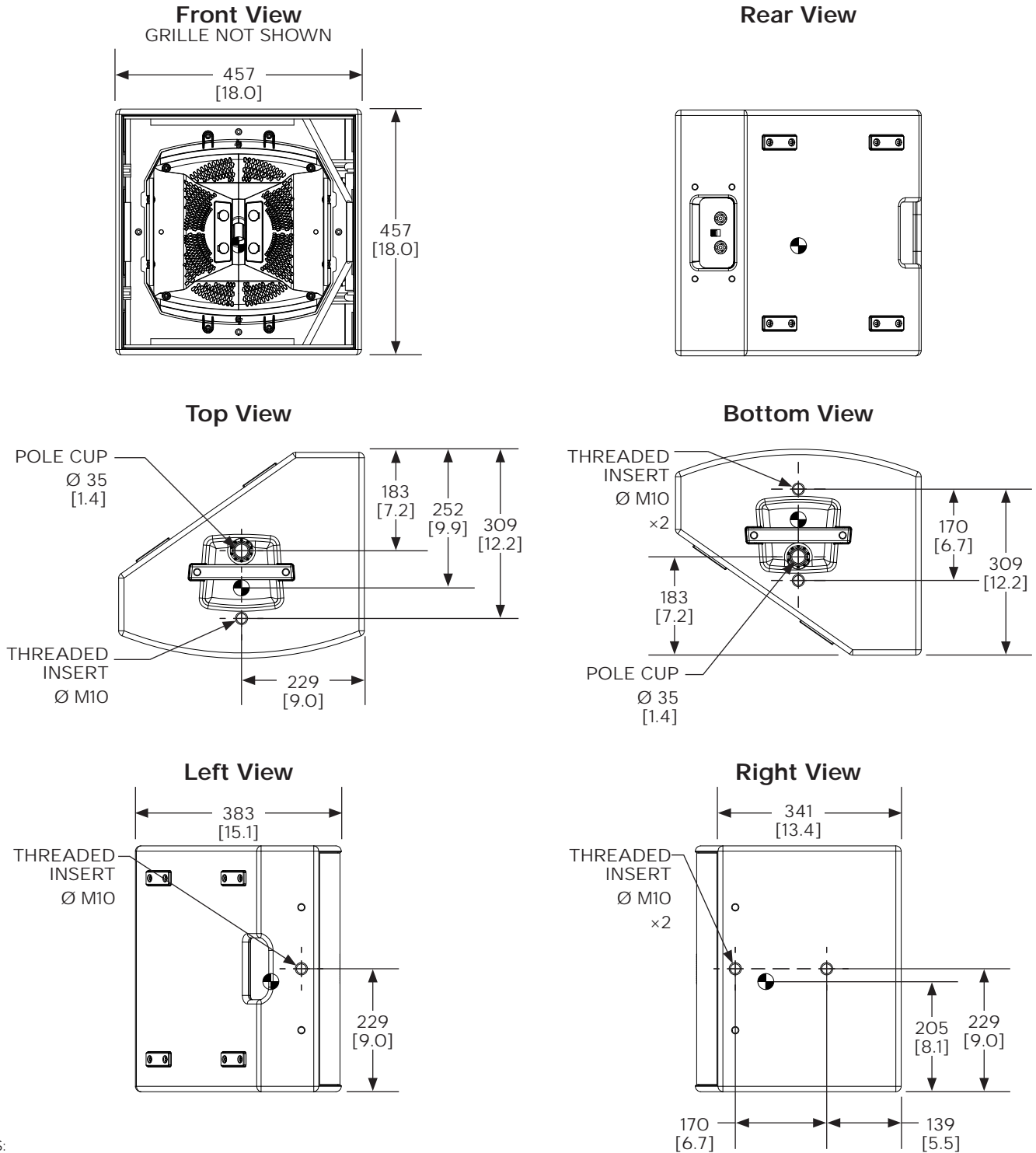


TECHNICAL DATA

# AMM112

## multipurpose loudspeaker

### Dimensions



NOTES:

1. DIMENSIONS ARE IN MILLIMETERS OVER INCHES.
2. WEIGHT APPROXIMATELY 22.04 KILOGRAMS (48.60 POUNDS).
3. ● SYMBOL INDICATES CENTER OF GRAVITY.

Bose, ControlSpace, PowerMatch, and ShowMatch are trademarks of Bose Corporation. Neutrik is a registered trademark of Neutrik AG. All other trademarks are the property of their respective owners.

For additional specifications and application information, please visit [PRO.BOSE.COM](http://PRO.BOSE.COM). Specifications subject to change without notice. 4/2021