

1. Disassembly Procedures

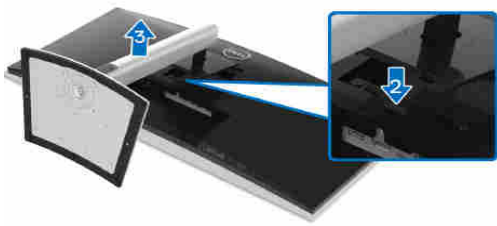
S1 Turn off power

S2 Removing the stand

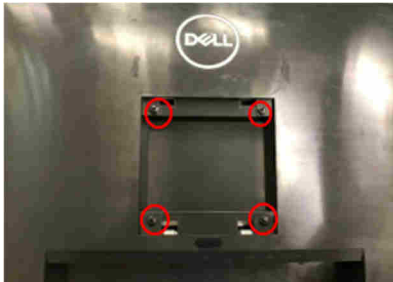
1. Place the monitor on U3415W curve sponge jig

2. Press and hold the stand release button.

3. Lift the stand up and away from the monitor.



S3 Unlock 4 screws on rear cover



Torque (1.1) 1 \* gf+

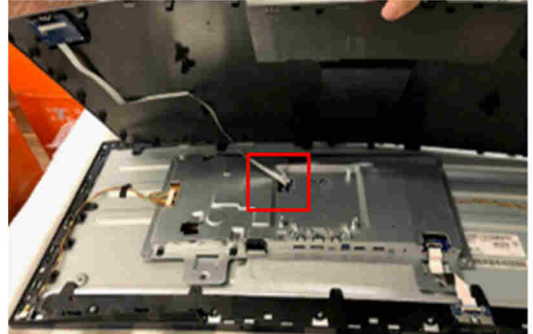
S4 Use hands and flat scraper to disassemble Rear, from monitor

**Notice the disassembly order:**

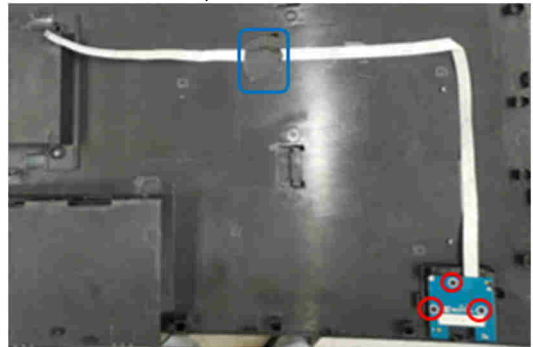
Top Side=>Right/ Left Side=>Bottom Side



S5 Pull out TR cable, from Rear to the top of Rear, over



S6 Tear off a tape from TR cable, Unlock screw to disassemble TR cable from Rear, over



Torque (1.53) .4 \* gf+

S7 Pull out U& cable from U&

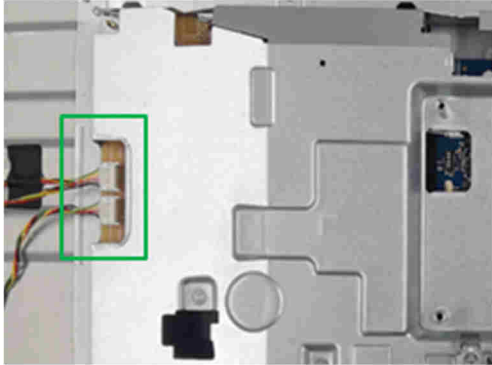
Unlock a screw to disassemble U& from Middle frame

Pull out U& cable from U&



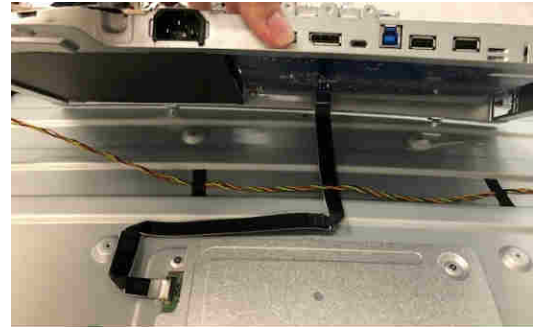
Torque (4.5) 4.5 \* gf+

S8 Pull out short backlight wire and long backlight wire from "6 . . R7 - .



S11 Pull out 6 . P cable from Panel

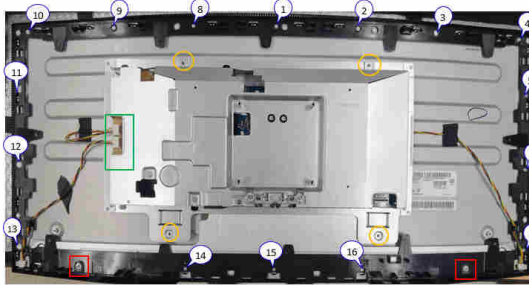
Tape off 5ain & 8 . from pan



S9 Unloc\$ 4 screws to disassem!le 5ain & 8 . %9range mar\$+

Unloc\$ screws to disassem!le Panel -oss from 5iddle /rame %Red 5ar\$+

Unloc\$ 1: screws to disassem!le 5iddle /rame %-lue mar\$



%&crew Tor' ue( 5ain & 8 . ( 4.5) 4.5\$gf Panel -oss( 3.534.4\$gf 5iddle /rame( 4.434.5\$gf+

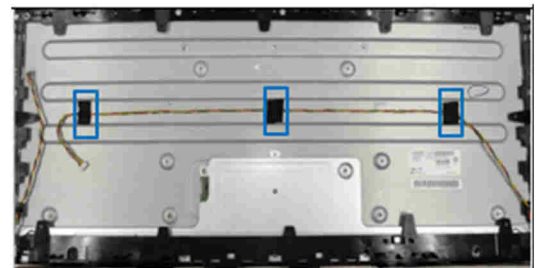
S12 Tape off , onductive foam from 5iddle /rame



S13 Tear off all tapes from Panel.

Pull out short backlight wire and long backlight wire from panel

. isassem!le the 5iddle /rame from Panel.

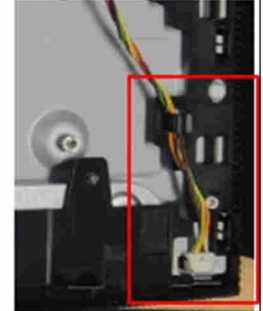
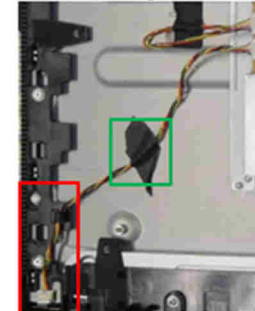


S1 Tear off a tape from 6 . P cable

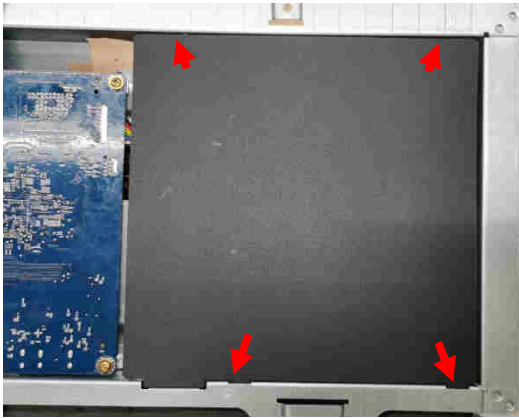


Short backlight wire

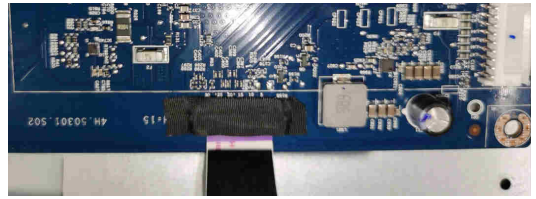
Long backlight wire



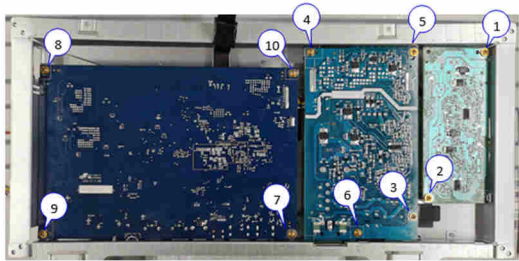
S14 . isassem!le ;5#lar PWR - . < from 5ain &8 .



S16 Tear off tape from 01/ - .

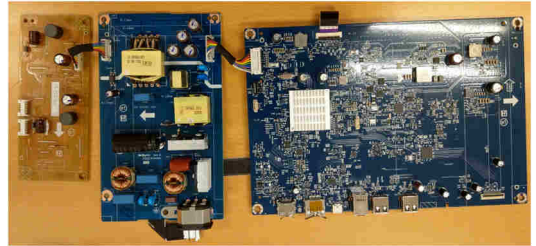


S15 Unloc\$ 14 P , - = screws to disassem!le 01/ - .>&P& - . and "6 . .R7 - . from 5ain &8 .

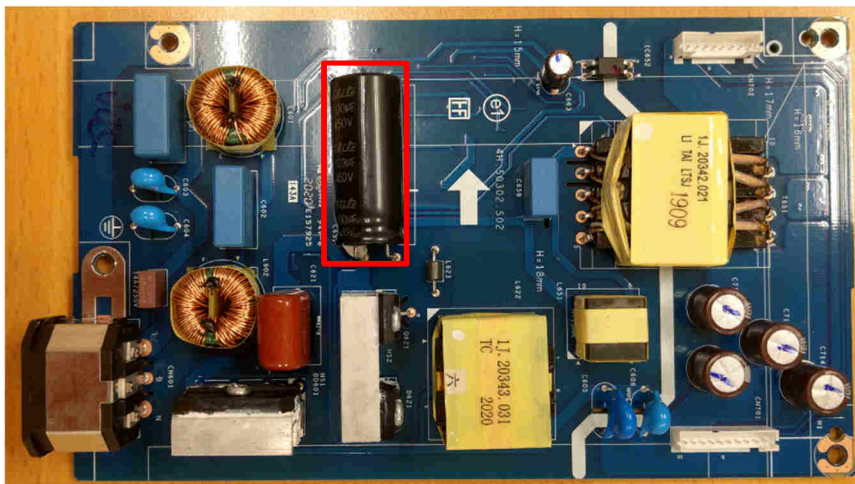


%&crew Tor' ue( ?)1 \*gf+

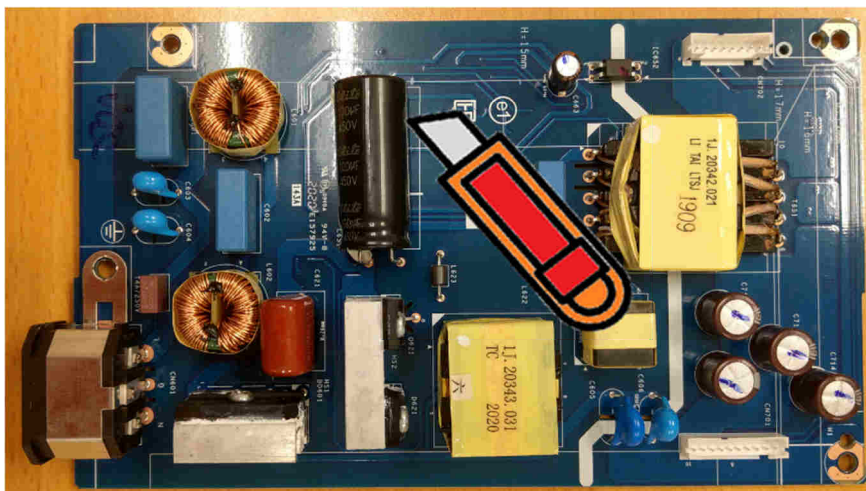
S17 Remove all ca!les from 01/ - .>&P& - . and "6 . .R7 - .



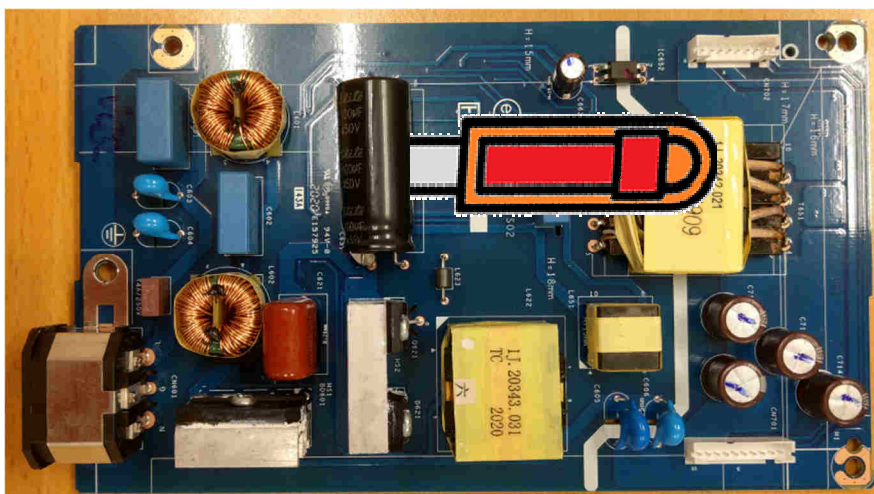
S18 Remove electrol#te capacitors %red mar\$+ from printed circuit !oads



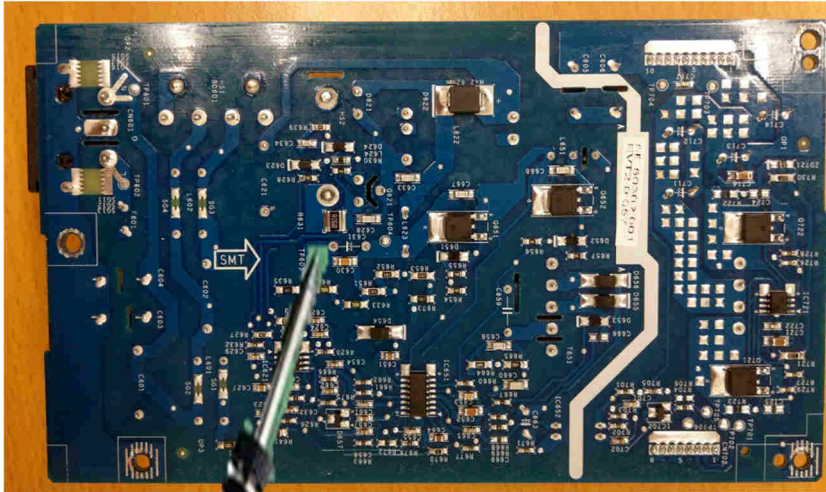
&1@31 , ut the glue !etween !ul\$ cap. and P , - with a \$nife



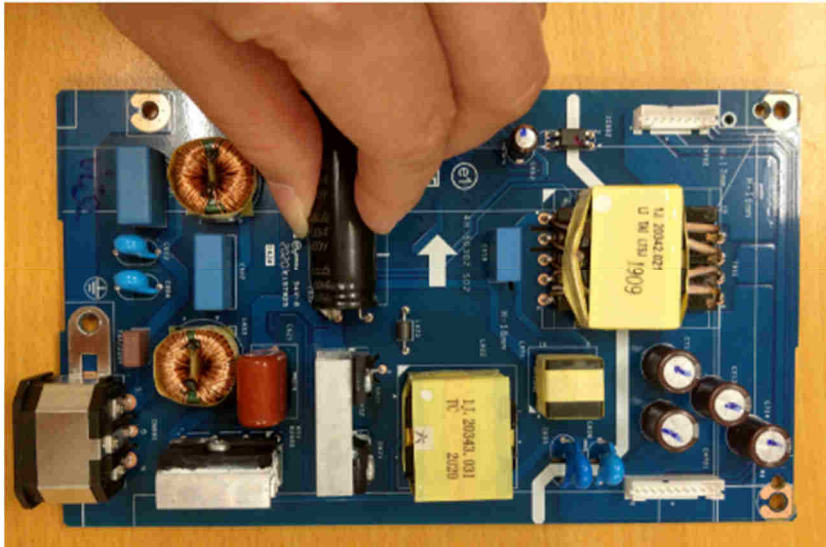
&1@3 6nsure cutting path within the glue> don't touch !ul\$ cap. or P , -



&1@33 Ta\$e out !ul\$ cap. pin solder with soldering iron and a !sor!er



&1@34 "ift the !ul\$ cap. up and awa# from the P , -



## 2. Product material information

The following substances, preparations, or components should be disposed of or recovered separately from other W666 in compliance with Article 4 of EU Directive 2002/95/EC, Council Directive 2002/95/EC, .

Capacitors / condensers (containing PCB/PCT)	No used
Mercury containing components	No used
Batteries	No used
Printed circuit boards (with a surface greater than 10 square cm)	Product has printed circuit boards (with a surface greater than 10 square cm)
Component contain toner, ink and liquids	No used
Plastic containing BFR	No used
Component and waste contain asbestos	No used
CRT	No used
Component contain CFC, HCFC, HFC and HC	No used
Gas discharge lamps	No used
LCD display > 100 cm <sup>2</sup>	Product has an LCD greater than 100 cm <sup>2</sup>
External electric cable	Product has external cables
Component contain refractory ceramic fibers	No used
Component contain radio-active substances	No used
Electrolyte capacitors (height > 25mm, diameter > 25mm)	Product has electrolyte capacitors (height >25mm, diameter > 25mm)

## 3. Tools required

List the type and size of the tools that would typically be used to disassemble the product to a point where components and materials requiring selective treatment can be removed.

Tool description(

3 Screwdriver

3 Penknife

3 - bar scraper