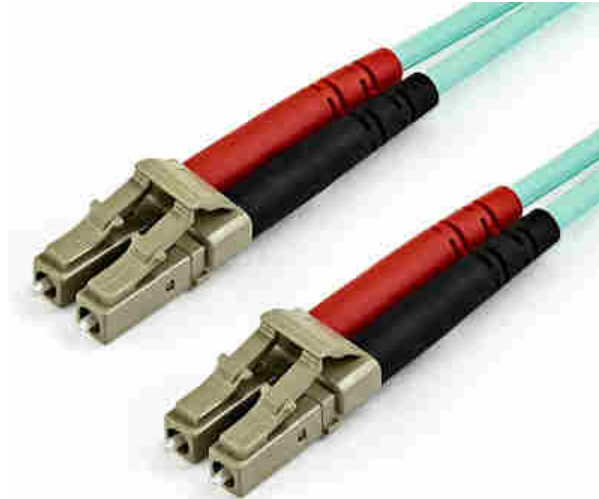


15m (50ft) LC/UPC to LC/UPC OM3 Multimode Fiber Optic Cable, Full Duplex 50/125m Zipcord Fiber, 100G Networks, LOMMF/VCSEL, <0.3dB Low Insertion Loss, LSZH Fiber Patch Cord

**Product ID:** A50FBLCLC15



This OM3 LC to LC Multimode Duplex Fiber Optic Patch cable features 50/125 micron fiber and supports high-bandwidth data transmission over a 10 Gigabit Ethernet connection.

With laser-optimized multimode fiber (LOMMF), the patch cable is ideal for connecting 850 nm Vertical Cavity Surface Emitting Laser (VCSEL) and LED sources. The high-speed connectivity on the aqua fiber-optic cable provides a high-bandwidth solution for your data centers or high-density applications.

Each OM3 fiber cable is individually tested and certified to be within acceptable optical insertion loss limits for guaranteed compatibility and 100% reliability.

Housed in a LSZH (Low-Smoke, Zero-Halogen) flame retardant jacket, this fiber-optic cable ensures minimal smoke, toxicity and corrosion when exposed to high sources of heat, or in the event of a fire. It's the best choice for a wide range of environments, including industrial settings, central offices and schools, as well as residential settings where building codes are a consideration.

A50FBLCLC15 is backed by a StarTech.com lifetime warranty and free lifetime technical support.

## Certifications, Reports and Compatibility



## Applications

- Use in 10 Gigabit high-speed network environments

- High-speed connectivity for high-density applications

## Features

- **OM3 FIBER CABLE:** OM3 Laser-Optimized Multimode Fiber Cable delivers up to 100 Gbps Ethernet; Full-duplex zip-cord with color-coded TX/RX connectors for cabling servers and Storage Area Networks (SANs)
- **QUALITY CONSTRUCTION:** 50/125m fiber core/cladding is immune to EMI; Protective Aramid fiber sheath for improved tensile strength and crush resistance; LC/LC connectors with UPC polished ceramic ferrules for insertion loss below 0.3dB
- **RATINGS AND RELIABILITY:** Individually tested for signal integrity; LSZH jacket emits low-smoke and fumes in case of fire; TIA/EIA compliant fiber core; Attenuation value under 2.3dB/km meets or exceeds industry standards
- **COMPATIBILITY:** OM3 LC/LC multimode cable supports 1/10/40/100 Gbps for high-density network applications such as SANs, data servers, SFP+ and QSFP+ connections over 1000BASE-SX, 10GBASE-SR, 40GBASE-SR4, and 100GBASE-SR10; Backward compatible with OM2
- **SPECS:** 15m (49ft); Color: Aqua (OM3); LC/LC UPC; 850nm or 1300nm LED/VCSEL; Modal Bandwidth: 2000MHz·km at 850nm; Cable OD: 2.9mm; Bend Radius: Static 1.2in (3cm), Dynamic 2.4in (6cm); Backed for Life

---

### Hardware

Warranty	Lifetime
Fire Rating	LSZH Rated (Low Smoke Zero Halogen)
Fiber Size	50/125

---

### Performance

Maximum Data Transfer Rate	100Gbps
Cable Rating	1Gbps / 10Gbps / 40Gbps / 100Gbps
Fiber Classification	OM3
Type	Multi Mode
Wavelength	850nm

---

### Connector(s)

Connector A	1 - Fiber Optic LC Duplex
Connector B	1 - Fiber Optic LC Duplex

---

### Environmental

Operating Temperature	-20C to 60C (-4F to 140F)
-----------------------	---------------------------

Storage Temperature	-20C to 60C (-4F to 140F)
Humidity	0~90% RH

---

**Physical Characteristics**

Color	Aqua
Cable Length	49.2 ft [15 m]
Product Length	49.2 ft [15.0 m]
Product Width	0.0 in [0.0 mm]
Product Height	0.0 in [0.0 mm]
Weight of Product	6.9 oz [195.0 g]

---

**Packaging Information**

Package Quantity	1
Package Length	8.7 in [22.0 cm]
Package Width	7.9 in [20.0 cm]
Package Height	1.3 in [32.0 mm]
Shipping (Package) Weight	7.3 oz [206.0 g]

---

**What's in the Box**

Included in Package	1 - 15 m Fiber Patch Cable
---------------------	----------------------------

---

***\*Product appearance and specifications are subject to change without notice.***