



airCube™

airMAX® Home Wi-Fi Access Point with PoE In/Out

Models: ACB-AC, ACB-ISP

PoE Passthrough for Powering a 24V CPE Device

UMobile App for Fast Setup

Managed by UNMS™, Ubiquiti Network Management System



Introduction

Ubiquiti Networks introduces the airCube™, a cost-effective wireless access point for use in your customer deployments.

Wireless Performance

Two models are available:

- **airCube AC** Dual-band, 802.11ac, 2x2 MIMO technology for maximum wireless performance:
 - **2.4 GHz radio band** Speeds of up to 300 Mbps
 - **5 GHz radio band** Speeds of up to 866.7 Mbps
- **airCube ISP** 802.11n, 2x2 MIMO Wi-Fi for speeds of up to 300 Mbps in the 2.4 GHz radio band

Versatile Power Options

Both models offer convenient PoE passthrough to power a 24V airMAX CPE device, so you can use a single PoE adapter to power both devices.

To provide sufficient power for PoE passthrough:

- The airCube AC requires the included power adapter or 24V, 1A PoE input.
- The airCube ISP requires 24V, 1A PoE input or a 2A Micro USB adapter (not included).

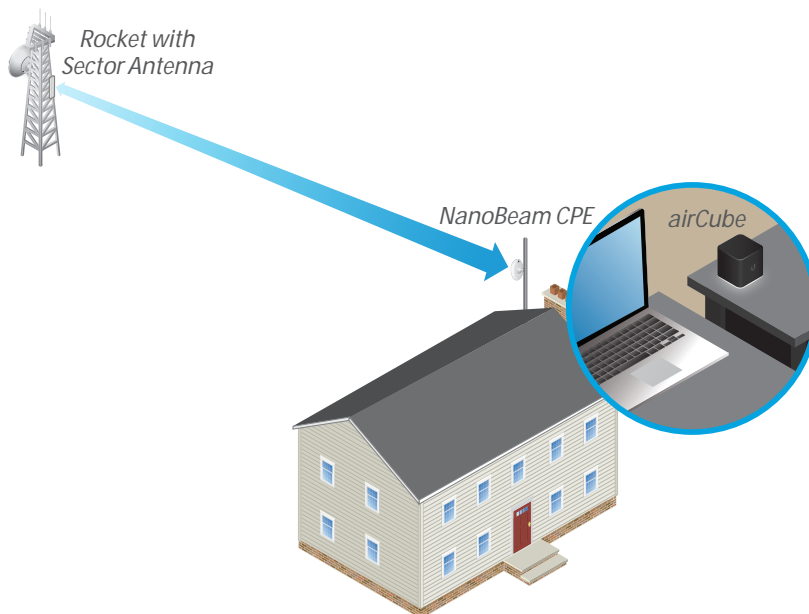
Intuitive Software

Management options feature a graphical user interface designed for streamlined setup and control.

Available options include:

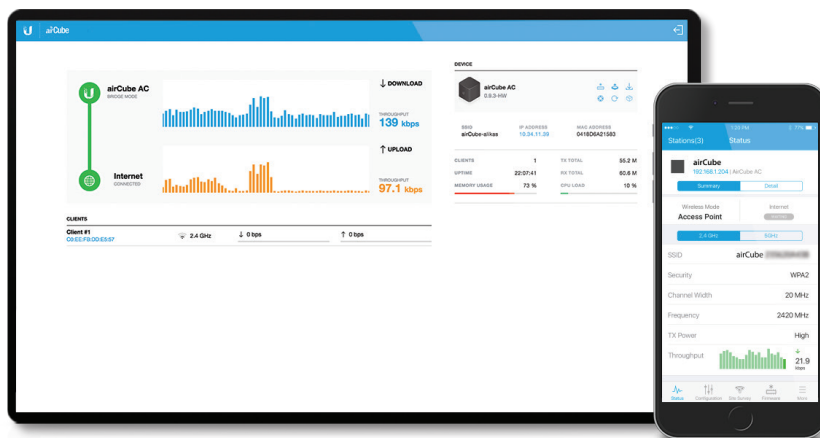
- **UMobile App** Supports quick setup and status information.
- **Web UI** Enables a standalone utility for basic configuration.
- **UNMS** Provides advanced remote control of Ubiquiti® devices.

Example of a Typical Deployment



Point-to-MultiPoint (PtMP) link: The airCube powers a NanoBeam® 5AC Gen 2 CPE, which connects to a Rocket® Prism® 5AC Gen 2 on an airMAX ac Sector Antenna.

Management Screens



Models

airCube™ AC

Model: airCube-AC

- (4) Gigabit Ethernet Ports
- 24V PoE Passthrough for airMAX CPE
- Dual-Band, 802.11ac, 2x2 MIMO Technology
- Up to 300 Mbps in the 2.4 GHz Radio Band
- Up to 866.7 Mbps in the 5 GHz Radio Band
- Powered by 24V Passive PoE or Included Power Adapter



airCube™ ISP

Model: airCube-ISP

- (4) 10/100 Fast Ethernet Ports
- 24V PoE Passthrough for airMAX CPE
- 802.11n, 2x2 MIMO Technology
- Up to 300 Mbps in the 2.4 GHz Radio Band
- Powered by 24V Passive PoE or 2A Micro USB Adapter (Not Included)



Model Comparison Chart

Model	Ports	Radio Bands	Wi-Fi	Power Input	PoE Passthrough	Powers airMAX Device
airCube-AC	(4) Gigabit	2.4 and 5 GHz	802.11ac 2x2 MIMO	24V, 1A PoE		
				Power Adapter		
airCube-ISP	(4) 10/100	2.4 GHz	802.11n 2x2 MIMO	24V, 1A PoE		
				Micro USB Adapter		

Specifications

airCube-AC		
Dimensions	87.80 x 89.50 x 89.25 mm (3.46 x 3.52 x 3.51")	
Weight	280 g (9.88 oz)	
Power Supply	24VDC	
Power Method	24VDC, 0.83A or PoE 24V In on LAN Port 1	
Supported Power Voltage	22-26V	
Max. Power Consumption	8.5W	
PoE Out	Controllable 24V PoE Out (+4, 5; -7, 8) on WAN Port	
Management Interface	Wi-Fi / Ethernet	
Networking Interface	(4) Gigabit Ethernet Ports	
LED	Status	
Max. TX Power	22 dBm	
Antenna Gain	2.4 GHz	5 GHz
	4 dBi	5 dBi
Max. Speeds	2.4 GHz	5 GHz
	300 Mbps	866.7 Mbps
Enclosure Characteristics	Black Plastic	
ESD/EMP Protection	±24 kV Contact / Air	
Operating Temperature	-10 to 50° C (-14 to 122° F)	
Operating Humidity	5 to 95% Noncondensing	
Certifications	CE, FCC, IC	



Specifications

airCube-ISP	
Dimensions	87.80 x 89.50 x 89.25 mm (3.46 x 3.52 x 3.51")
Weight	215 g (7.58 oz)
Power Supply	5V
Power Method	PoE 24V In on LAN Port 1 or 2A Micro USB Adapter (Not Included)
Supported Power Voltage	4.95-5.05V
Max. Power Consumption	5W
PoE Out	Controllable 24V PoE Out (+4, 5; -7, 8) on WAN Port
Management Interface	Wi-Fi / Ethernet
Networking Interface	(4) 10/100 Fast Ethernet Ports
LED	Status
Max. TX Power	22 dBm
Antenna Gain	4 dBi
Max. Speeds	300 Mbps
Enclosure Characteristics	Black Plastic
ESD/EMP Protection	±24 kV RJ-45 Interface
Operating Temperature	-10 to 50° C (-14 to 122° F)
Operating Humidity	5 to 95% Noncondensing
Certifications	CE, FCC, IC

