

## Desk-Mount Dual Monitor Arm - Full Motion - Articulating

**Product ID:** ARMSLIMDUO



Enhance productivity and free up valuable space with the ARMSLIMDUO Dual-Monitor Arm. Two independent arms make it easy to adjust your dual-monitor setup, plus two USB pass-through ports and headset plugs provide easy accessibility to ports.

When you mount your displays on a dual-monitor arm above your desk or table surface, you can adjust your display height, position and viewing angles easily to create a more comfortable and ergonomic work environment. You also get the added benefit of reclaiming valuable workspace by clearing monitor stands off your desk, plus the cable management system keeps cables neatly tucked away.

The dual-arm monitor mount holds two 12" to 32" monitors, side-by-side, with ease. Each arm supports up to 8.0 kg (17.6 lb.) of weight.

The ARMSLIMDUO gives you easy access to two USB pass-through ports and two audio ports located at the front of the base. The ports let you conveniently extend the ports on your PC or laptop, using the integrated cables. This lets you plug in your microphone, headset or USB devices, without having to reach around to access the ports on your computer. It also gives you a cleaner cable setup, which adds to a more productive, less cluttered work space.

The desk-mount monitor arms offer a full range of motion on several axes, letting you tilt, pan and rotate your monitors to adjust your viewing angle any time to suit your changing needs. To view longer pages or blocks of code without scrolling, the arms also support landscape-to-portrait display rotation for each monitor.

The spring-assisted height adjustment makes raising or lowering your monitors effortless. You can also adjust the tension to your own preference.

With its durable aluminum construction, the ARMSLIMDUO securely holds two monitors using a standard VESA mount. The C-clamp makes it easy to install the dual-monitor arm mount to your desk or table. The fast insert function makes it easy to attach your monitor.

The ARMSLIMDUO is backed by a 2-year StarTech.com warranty and free lifetime technical support.

## Certifications, Reports and Compatibility

### Applications

- Mount dual displays to the side of your desk or table, with a wide range of adjustment capability
- Ideal for busy work environments such as health care centers, financial and commercial environments
- Spread displays apart or position them back-to-back for multi-user workstations
- Rotate displays to portrait orientation for web design and coding

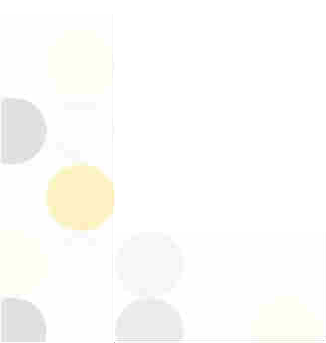
### Features

- Dual monitor mount supports two 12" to 32" monitors, side-by-side
- Two independent arms with full-motion articulation and spring-assisted height adjustment
- Two USB pass-through ports and two 3.5 mm audio ports
- Supports up to 8.0 kg (17.6 lb.) of weight per mounting arm
- Landscape-to-portrait display rotation (for use in portrait position, the mount supports ultrawide displays with max width of 20.4"/51.8 cm)
- Landscape to portrait screen rotation
- 360 rotation around the support post and at the elbow
- Integrated 4' 6" (1.4 m) cables for USB and audio pass-through ports
- Hidden cable management
- Mount on a desk or table using a C-clamp
- VESA 75x75/100x100 works with all monitors with VESA mounting
- VESA quick release

---

#### Hardware

Warranty	2 Years
# of Displays Supported	2
Articulating	Yes
Mounting Options	Desk Clamp



VESA Hole Pattern(s)	75x75 mm
	100x100 mm
Mounting Surface Thickness	90 mm (3.54 in.)

---

### Performance

Weight Capacity (Per Display)	17.7 lb [8 kg]
Minimum Display Size	15in
Maximum Display Size	32in
Height Adjustment	Yes
Maximum Arm Extension	22.3 in [56.8 cm]
Maximum Arm Span	3.7 ft [1.1 m]
Display Tilt	-90 / +85
Display Swivel	180
Swivel / Pivot	135 around the support post 360 at the elbow
Display Rotation	360

---

### Physical Characteristics

Color	Black
Material	Aluminum
Product Length	0.6 in [14.0 mm]
Product Width	3.7 ft [1.1 m]
Product Height	17.7 in [45.0 cm]
Weight of Product	13.5 lb [6.1 kg]

---

### Packaging Information

Package Length	31.6 in [80.3 cm]
Package Width	9.7 in [24.6 cm]

Package Height 5.6 in [14.3 cm]

Shipping (Package) Weight 17.0 lb [7.7 kg]

---

**What's in the Box**

Included in Package

- mounting arm
- desk clamps (upper bracket)
- desk clamps (lower bracket)
- VESA monitor mounts
- M4x12 mm screws
- M4x30 mm screws
- plastic spacers
- M4 Allen key
- M5 Allen key
- M6x12mm screws
- M8x12 mm screws
- rubber pads
- instruction manual

---

***\*Product appearance and specifications are subject to change without notice.***

