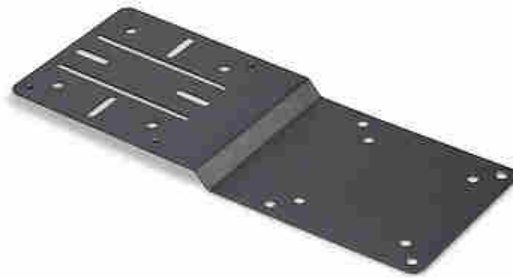


VESA Mounting Bracket for NUC/Thin Clients or Laptop Docking Stations, VESA 75x75/100x100 Compatible Extension Plate For Mini PC

Product ID: DOCK-NUC-VESA-MOUNT



The VESA Mounting Bracket enables NUCs, thin clients, or laptop docking stations to be securely mounted to the back of a 75x75 or 100x100 VESA-enabled monitor or display.

Four cross slots enable the mounting of Intel NUCs or industrial thin clients without their included mounting brackets. Additionally, two parallel slots allow docking stations and other peripherals that feature a 40x40 mounting pattern to mount to the bracket. This frees up valuable desk space and maintains a clutter-free, organized workspace.

The VESA extension plate includes a comprehensive hardware kit with a variety of screw sizes and lengths. These are used for mounting NUCs, Thin Clients, or docking stations directly to the VESA Mount Bracket Adapter, as well as for attaching the VESA extension plate to the display.

Mounted NUCs, thin clients, and docking stations are less accessible and more securely attached, reducing the risk of theft or tampering. This makes the Mounting Bracket ideal for shared or public environments such as office hot desks, classrooms, banks, and libraries.

Works seamlessly with a variety of laptop docking stations, USB hubs, and KVM docks (sold separately) including 155NA-USB4-DOCK/155UE-USB4-DOCK, TB4CDOCK, HB31C2A1CGS, and 129N-USBC-KVM-DOCK/129UE-USBC-KVM-DOCK.

Certifications, Reports and Compatibility

Applications

- Mount a NUC, thin client, or laptop docking station to the back of a VESA-enabled monitor
- Reduce the risk of theft or tampering of mounted NUCs, thin clients, and docking stations

Features

- **VESA MOUNTING BRACKET:** Enable compatible NUCs, thin clients, or laptop docking stations to be securely mounted to the back of a 75x75 or 100x100 VESA-enabled monitor, freeing up valuable desk space and maintaining a clutter-free, organized workspace
- **MOUNTING CONFIGURATIONS:** Four cross slots enable the mounting of Intel NUCs or industrial thin clients without their included mounting brackets, while two parallel slots allow for the mounting of docking stations that feature a 40x40 mounting pattern
- **MOUNTING HARDWARE:** Includes a comprehensive hardware kit with a variety of screw sizes and lengths for mounting NUCs, Thin Clients, or docking stations directly to the VESA Mount Bracket Adapter, as well as for attaching the VESA Bracket to a monitor
- **SECURE INSTALLATION:** Mounted NUCs, thin clients, or docking stations are conveniently hidden and more securely attached, reducing the risk of theft or tampering; Ideal for shared or public environments such as office hot desks, classrooms, and libraries
- **COMPATIBLE ACCESSORIES:** Works with a variety of compatible laptop docking stations, USB hubs, and KVM docks (sold separately), such as 155NA-USB4-DOCK/155UE-USB4-DOCK, TB4CDOCK, HB31C2A1CGS, and 129N-USBC-KVM-DOCK/129UE-USBC-KVM-DOCK

Hardware

Warranty	5 Years
Mounting Options	Compatible VESA Mounting Point
VESA Hole Pattern(s)	75x75 mm 100x100 mm

Physical Characteristics

Color	Black
Material	Steel
Product Length	4.7 in [12.0 cm]
Product Width	12.0 in [30.5 cm]
Product Height	0.1 in [1.5 mm]
Weight of Product	3.5 oz [100.0 g]

Packaging Information

Package Length	4.9 in [12.5 cm]
Package Width	12.2 in [31.0 cm]
Package Height	0.8 in [2.0 cm]
Shipping (Package) Weight	1.3 lb [0.6 kg]

What's in the Box

Included in Package	1 - VESA Adapter Mount for NUC
	4 - M3 x 15mm Screws
	4 - M3 x 5mm Screws
	4 - M4 x 5mm Screws
	4 - M4 x 12mm Screws
	4 - M4 x 20mm Screws
	4 - M5 x 12mm Screws
	4 - M5 x 20mm Screws
	4 - Washers
	8 - Spacers
	1 - Quick-Start Guide

****Product appearance and specifications are subject to change without notice.***