



# AC1200 Whole Home Mesh Wi-Fi AP

Fast, Elegant, Powerful

HC220-G5



▶ 300 Mbps + 867 Mbps Dual Band Wi-Fi

▶ Two Modes in One

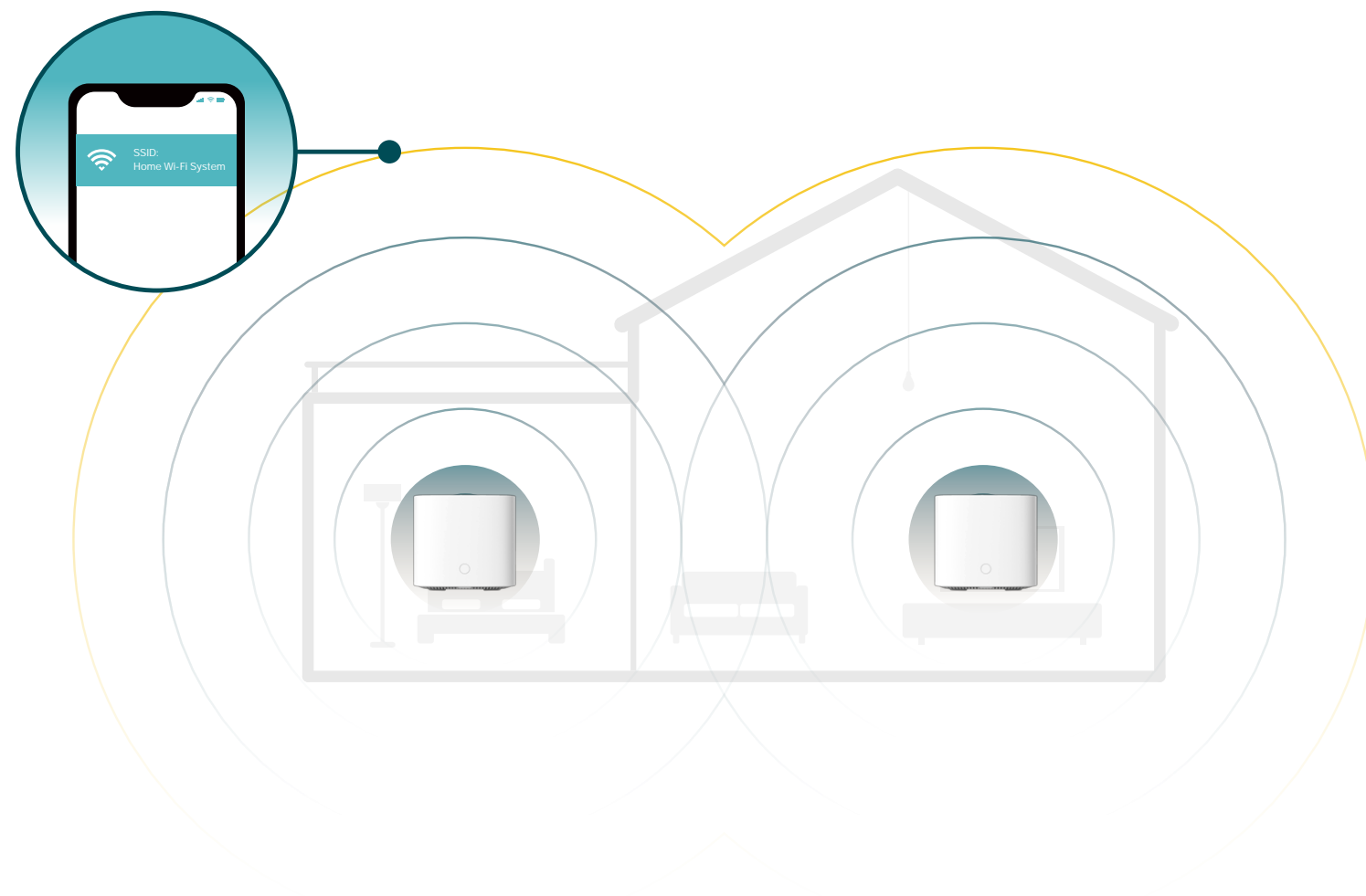
▶ Full Gigabit Ports

▶ EasyMesh

# Highlights

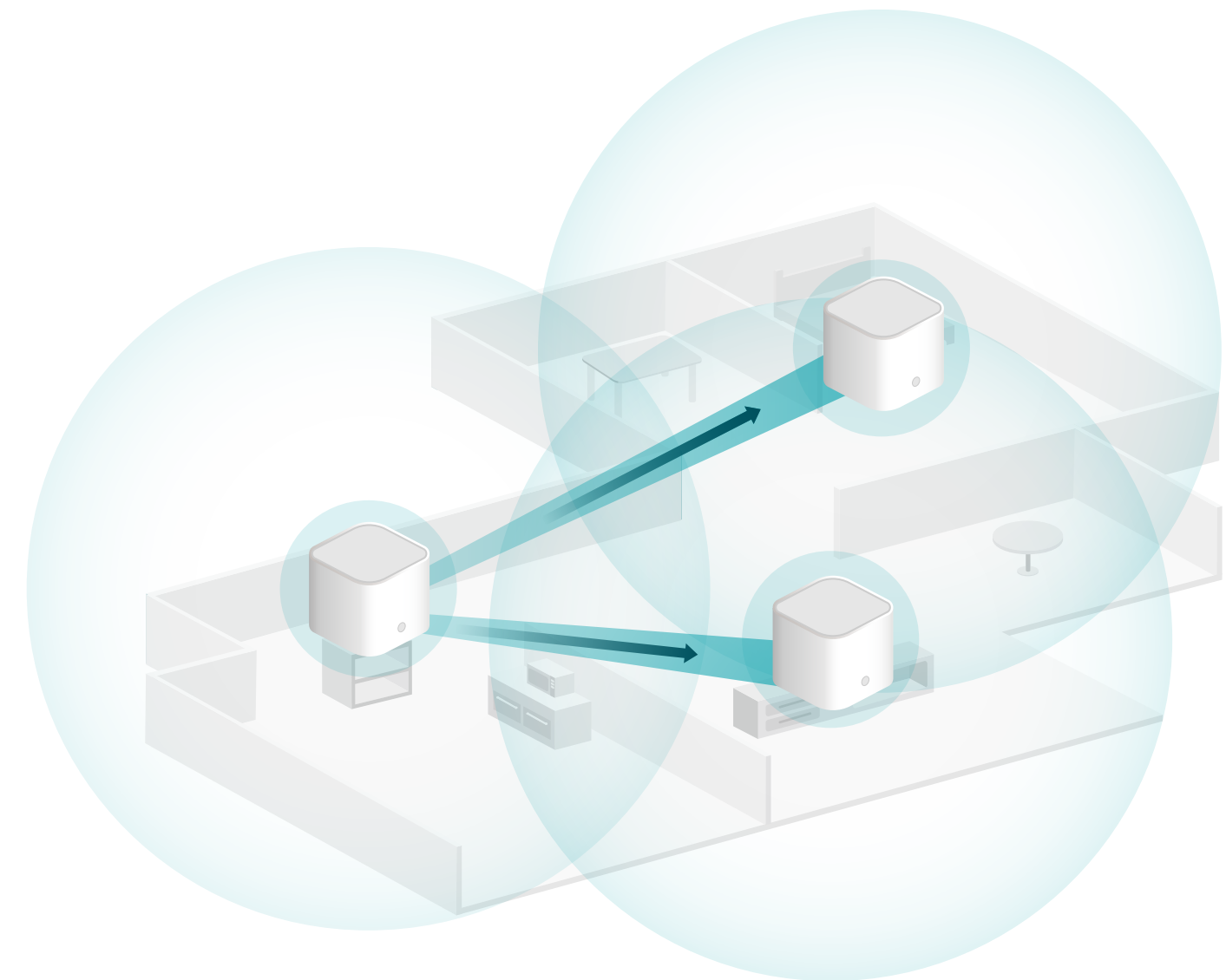
## Seamless Roaming with One Wi-Fi Name

Provided with super coverage via 2-pack or more mesh APs, you can enjoy seamless Wi-Fi in every room. Client Steering & Band Steering intelligently connect devices to the mesh AP with the strongest signal – no more sudden dropout when moving devices to different rooms. A unified wireless network (SSID) is used throughout the whole home.



## Wireless, Hassle-free Installation

Each mesh AP is peer to peer, so after complete the installation of the Main AP, by just pressing the WPS buttons on Main AP and add-on mesh AP, the add-on mesh AP will sync automatically with the Main AP to expand your network.

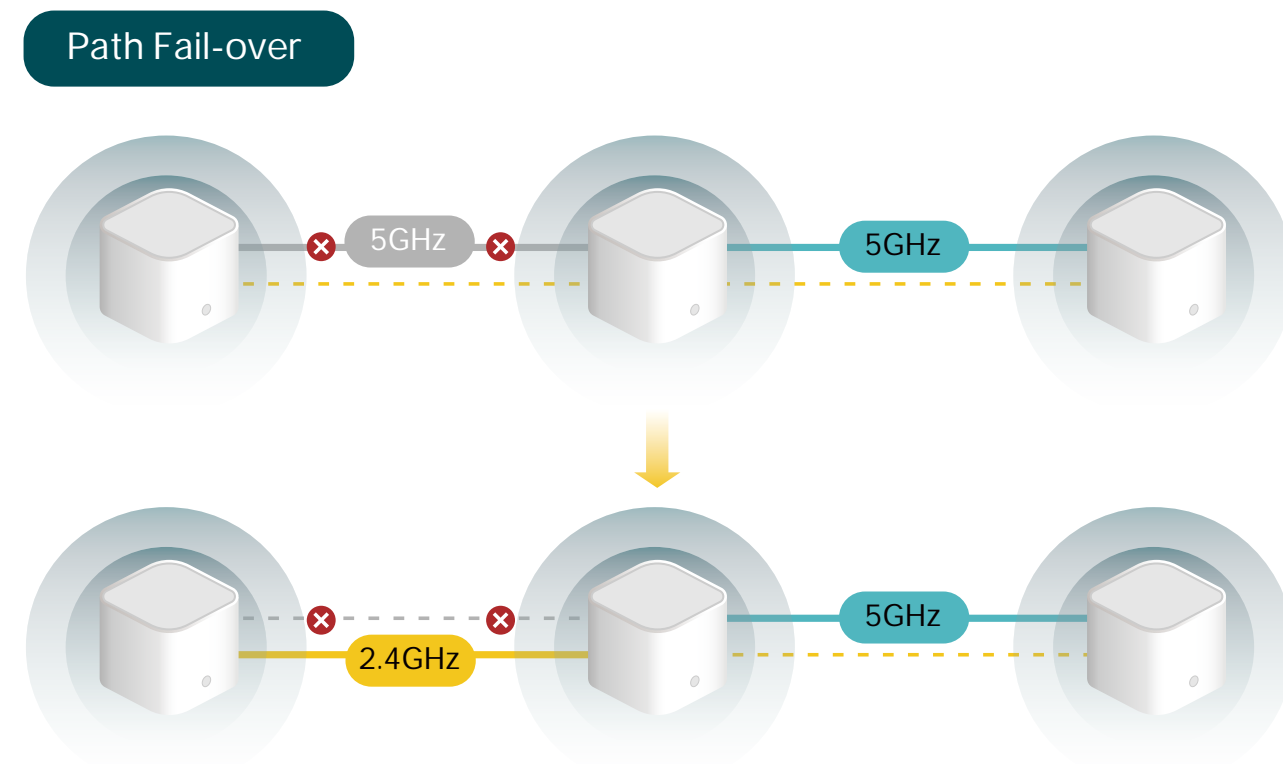


# Highlights

## Robust Smart Wi-Fi Connection

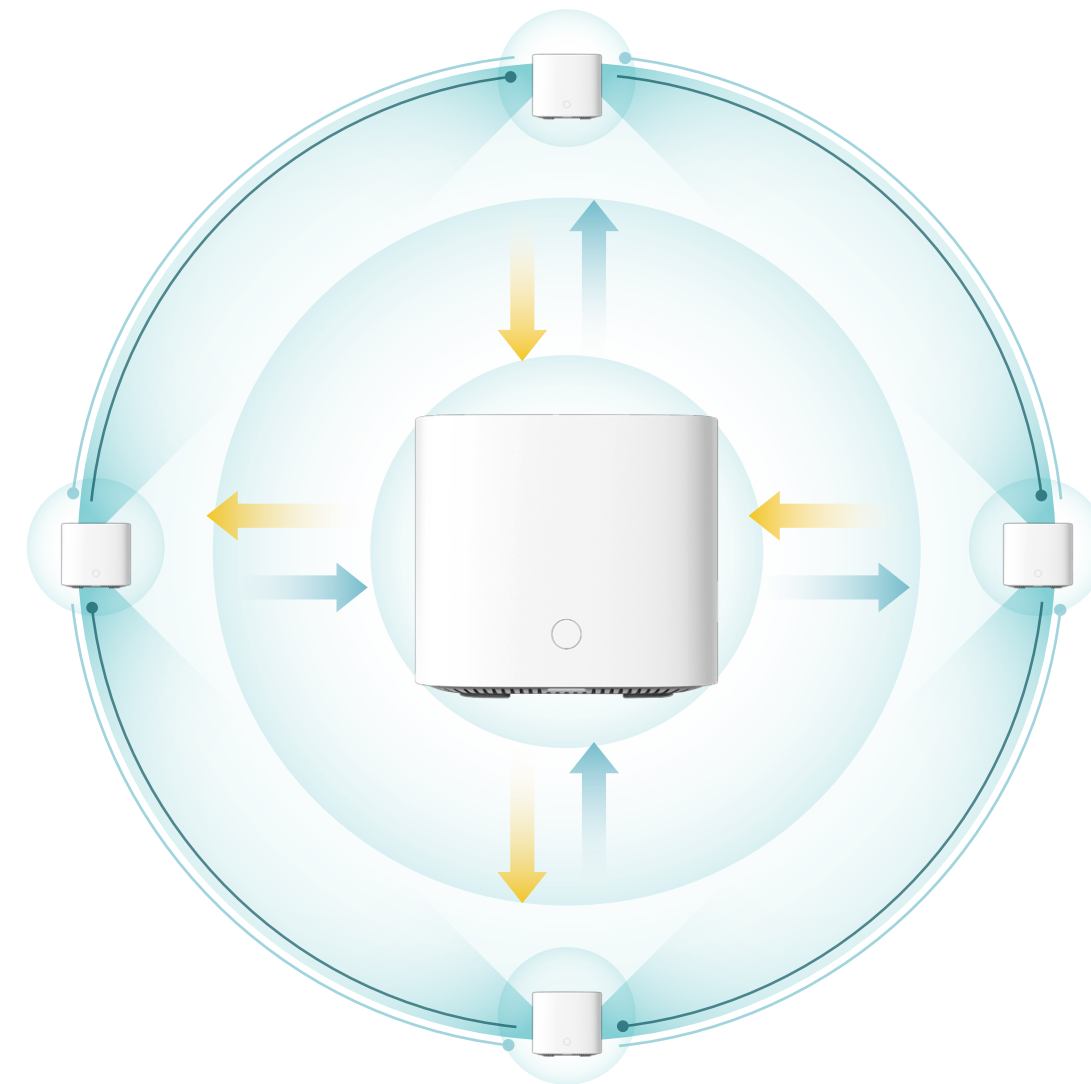
In TP-Link mesh Wi-Fi system, if a link is not usable for any reason, network resources could still be available via a second link as a fail-safe.

■ 2.4GHz ■ 5GHz ■ Not available ■ Network Congestion



## Cater for Standardized Mesh Technology

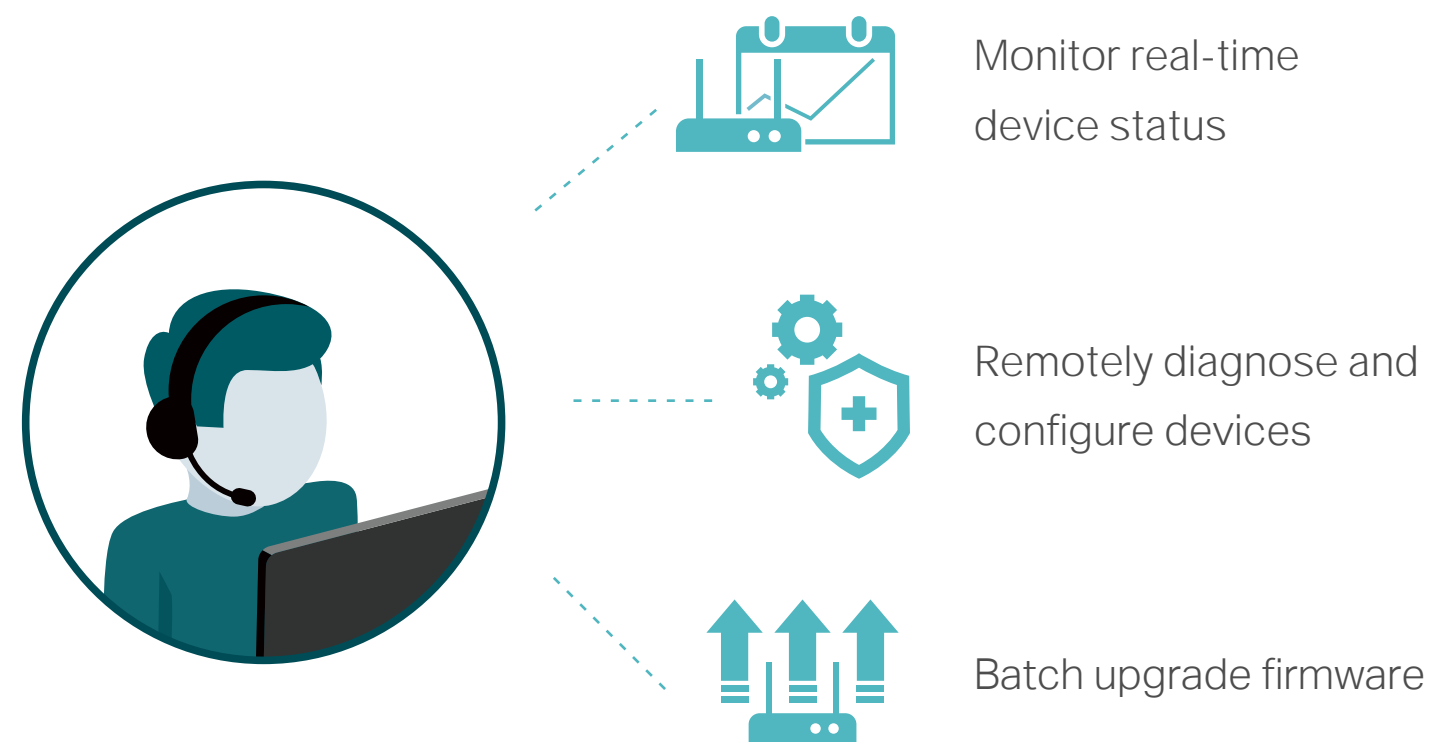
EasyMesh is a standard mesh technology developed by Wi-Fi Alliance. HC220-G5 adopts EasyMesh technology, which has further improved and standardized Wi-Fi functions, such as Wi-Fi diagnostics, channel selection and traffic separation.



# Highlights

## TR-069 Remote Management

Complied with TR-069 standard, service providers can manage devices remotely without any user interaction. Deployment is simplified while operating and maintenance costs are cut.



## Gigabit Internet Access

Take full advantage of your broadband with speed up to 1 Gbps with a Gigabit WAN/LAN port. Plug your PCs and smart TVs into one of the Two Gigabit LAN ports for fast and reliable wired connections.

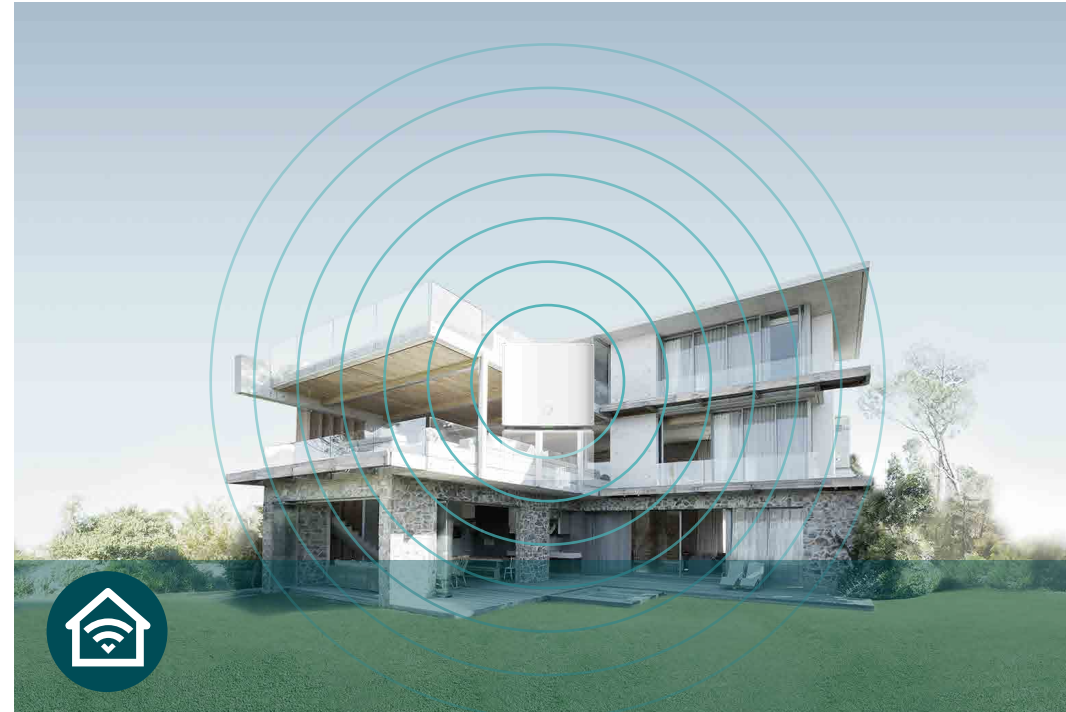


# Features



## Speed

- **Ultimate Wireless Speed** – Combined wireless speeds of up to 300 Mbps (over 2.4 GHz) and 867 Mbps (over 5 GHz)
- **MU-MIMO Technology** – Simultaneously exchange data with several devices, achieving speeds which are faster than standard AC routers
- **802.11 ac** – Provides a data transfer rate 3 times faster than 802.11n for each stream



## Wi-Fi Range

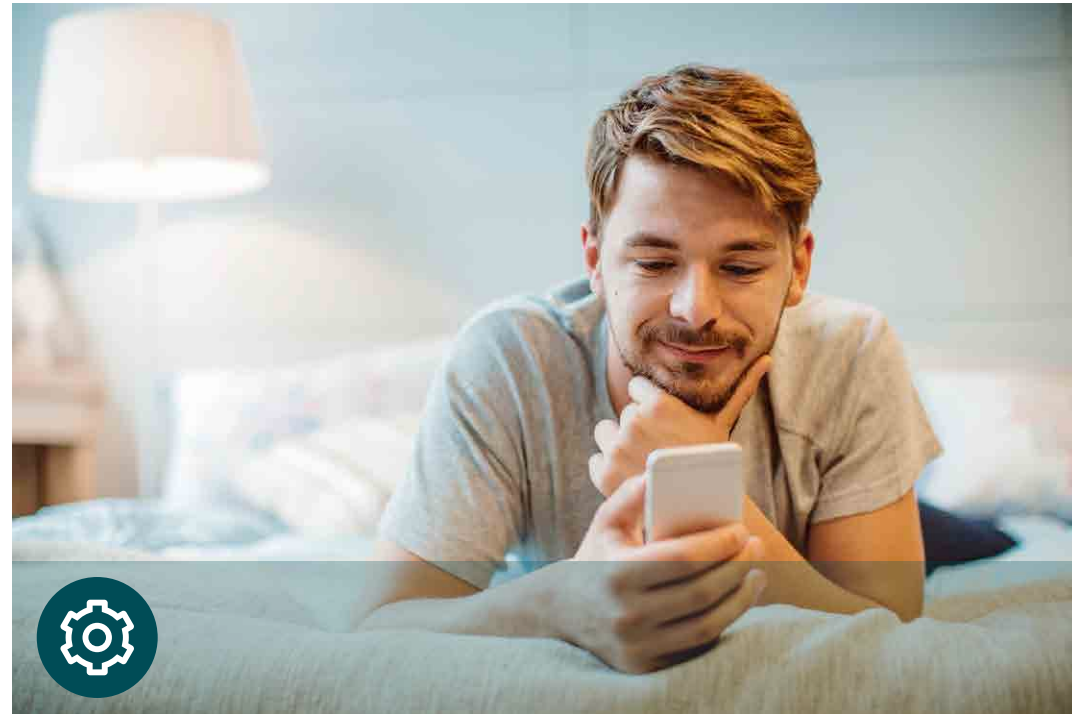
- **Optimal Range Wi-Fi** – High-performance internal antennas ensure widespread Wi-Fi coverage and a stable connection
- **Wi-Fi with Beamforming** – Beamforming technology locates the connected devices and further improves the signal strength toward these devices, delivering a more reliable and efficient wireless connection



## Reliability

- **Simultaneous Dual Band** – Separate Wi-Fi bands enable more devices to connect to your network without a drop in performance
- **Path Fail-over** – Network resources could still be available via a second link as a fail-safe when a backhaul link is not usable for any reason
- **Airtime Fairness** – Balances bandwidth to improve throughput and reliability for all connected devices

# Features



## Ease of Use

- Fast Connection – Connect wireless devices securely with the press of WPS button
- Online Upgrade – Support firmware upgrade on the Web UI locally and online upgrade remotely.



## Security

- Multi-SSID – Keep your main network secure by creating a separate network for friends and visitors
- Encryptions for Secure Network – WPA-PSK, WPA2-PSK, WPA PSK/WPA2 PSK, WPA3 encryptions provide active protection against security threats
- Parental Control – Manage when and how connected devices can access the internet
- VPN Server – Open VPN, PPTP VPN and IPSec VPN are supported, making it easy to set up a secure connection between your private network and the internet



## Easy Management

- Intuitive Web UI – Ensures quick and simple installation
- Remote Management – Complied with TR-069 standard, which can manage devices remotely without any user interaction

# Specifications

## Hardware

- Interface: 2\*10/100/1000Mbps LAN Ports, 1\*10/100/1000Mbps WAN/LAN Port
- Buttons: WPS Button, Reset Button
- CPU: Dual-Core, 880MHz
- External Power Supply: 12VDC/1.0A
- Antenna Type: Internal antennas
- Dimensions (W x D x H): 3.9 x 3.9 x 3.3 in (100 x 100 x 85 mm)



## Wireless

- Wireless Standards: IEEE 802.11ac/n/a 5GHz, IEEE 802.11b/g/n 2.4GHz
- Frequency: 2.4GHz and 5GHz
- Signal Rate: 5 GHz: Up to 867 Mbps, 2.4 GHz: Up to 300 Mbps
- Transmit Power: FCC: <30 dBm, CE: <20 dBm (2.4 GHz), <23 dBm (5 GHz)
- Wireless Function: MU-MIMO, Beamforming, Band Steering, Airtime Fairness
- Wireless Security: WPA-PSK, WPA2-PSK, WPA PSK/WPA2 PSK, 802.1x(WPA2 Enterprise) , WPA3



# Specifications

## Software

- Protocols: Support IPv4 and IPv6
- Management: Local Management, Remote Management, TR-069(TR-098/TR-181), TR-111, TR-143
- Multi-SSID: Up to 4 SSIDs for each band
- DHCP: Server, Client
- Firewall Security: SPI Firewall
- WAN Connection Type: Dynamic IP/Static IP/PPPoE
- Working Mode: Router, Access Point
- Mesh: EasyMesh, IEEE 802.11k/v/r, Ethernet Backhaul, Seamless Roaming
- Support IPTV, IGMPV2/3 and IGMP Snooping
- Quality of Service: WMM
- Parental Controls
- LED Schedule
- Wi-Fi Schedule

## Others

- Certification: CE, FCC
- System Requirements:
  - Internet Explorer 11+, Firefox 12.0+, Chrome 20.0+, Safari 4.0+, or other JavaScript-enabled browser
  - Cable or DSL Modem (if needed)
  - Subscription with an internet service provider (for internet access)
- Environment:
  - Operating Temperature: 0°C~40°C (32°F~104°F), Storage Temperature: -40°C~70°C (-40°F ~158°F)
  - Operating Humidity: 10%~90% non-condensing, Storage Humidity: 5%~90% non-condensing
- Package Contents:
  - AC1200 Whole Home Mesh Wi-Fi AP
  - Power Adapter
  - RJ45 Ethernet Cable
  - Quick Installation Guide