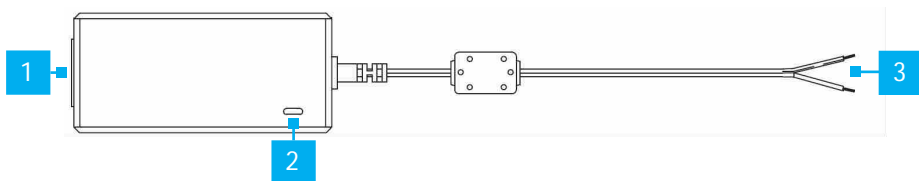


Universal 65W DC Power Adapter | 20V 3.25A | Industrial

Product Diagram (ITB20D3250)



Component	Function
1 Power Connector (side)	<ul style="list-style-type: none"> Used to power the Adapter.
2 LED Indicator	<ul style="list-style-type: none"> Solid: Indicates that the Adapter is powered On. O : Indicates that the Adapter is not receiving power.
3 Terminal Block Wires	<ul style="list-style-type: none"> Used to connect and power a Device. Red Wire = Positive Black Wire = Negative Output = 20V Current = 3.25A 65W

Requirements

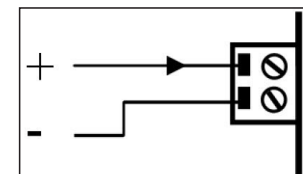
For the latest requirements, please visit www.startech.com/ITB20D3250

- (Optional) Small Flat Head Screwdriver x 1
- Device with a Two or Three Conductor Terminal Block Connector x 1

Using the Two Conductor Terminal Block Connector

1. Remove the **Two Conductor Terminal Block Connector** from the **Device**, you want to power.
2. Plug the **Two Conductor Terminal Block Connector** on the **Adapter** into the **Terminal Connector** on the **Device**.

Note: Ensure the polarity of the input power is correctly matched with the **Terminal Block Pins** to ensure proper functionality. Refer to the **Device's** vendor manual for further information on properly wiring the **Device**.



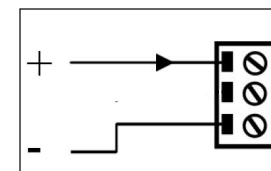
Two Conductor Terminal Block Connector

Using the Three Conductor Terminal Block Connector

1. Using a small screwdriver (Flat Head), loosen the screws on the **Two Conductor Terminal Block Connector** and carefully remove the **Terminal Block Wires** from the **Two Conductor Terminal Block Connector**.
2. Using a small screwdriver, loosen the screws on the **Three Conductor Terminal Block Connector** (included) and carefully insert the **Terminal Block Wires** into the **Three Conductor Terminal Block Connector** (Red Wire = Positive and Black Wire = Negative).

Note: Ensure the polarity of the input power is correctly matched with the **Terminal Block Pins** to ensure proper functionality. Refer to the **Device's** vendor manual for further information on properly wiring the **Device**.

3. Tighten the screws on the **Three Conductor Terminal Block Connector**, to secure the **Terminal Block Wires** into the **Three Conductor Terminal Block Connector**.



Three Conductor Terminal Block Connector

4. Plug the **Three Conductor Terminal Block Connector** on the **Adapter** into the **Terminal Connector** on the **Device**.

Powering the Adapter

- Connect the **Power Cord** to the **Power Connector** on the **Adapter** and to an **AC Electrical Outlet**.

Connecting the Adapter to a Terminal Block

1. Before terminating the **Adapter** make sure that the **Adapter** is disconnected from the **Power Cord**.
2. Refer to the vendor manual that came with the **Device** in order to properly terminate the **Adapter**.

Note: *The Terminal Wires are Red Wire = Positive and Black Wire = Negative. The Output is 20V and the Current is 3.25A 65W.*

FCC Compliance Statement

This equipment has been tested and found to comply with the limits for a Class B digital device, pursuant to part 15 of the FCC Rules. These limits are designed to provide reasonable protection against harmful interference in a residential installation. This equipment generates, uses and can radiate radio frequency energy and, if not installed and used in accordance with the instructions, may cause harmful interference to radio communications. However, there is no guarantee that interference will not occur in a particular installation. If this equipment does cause harmful interference to radio or television reception, which can be determined by turning the equipment off and on, the user is encouraged to try to correct the interference by one or more of the following measures:

- Reorient or relocate the receiving antenna.
- Increase the separation between the equipment and receiver.
- Connect the equipment into an outlet on a circuit different from that to which the receiver is connected.
- Consult the dealer or an experienced radio/TV technician for help.

This device complies with part 15 of the FCC Rules. Operation is subject to the following two conditions:

(1) This device may not cause harmful interference, and (2) this device must accept any interference received, including interference that may cause undesired operation. Changes or modifications not expressly approved by StarTech.com could void the user's authority to operate the equipment.

Industry Canada Statement

This Class B digital apparatus complies with Canadian ICES-003.

Cet appareil numérique de la classe [B] est conforme à la norme NMB-003 du Canada.

CAN ICES-3 (B)/NMB-3(B)

This device complies with Industry Canada licence-exempt RSS standard(s). Operation is subject to the following two conditions:

(1) This device may not cause interference, and (2) This device must accept any interference, including interference that may cause undesired operation of the device.

Le présent appareil est conforme aux CNR d'Industrie Canada applicables aux appareils radio exempts de licence. L'exploitation est autorisée aux deux conditions suivantes:

(1) l'appareil ne doit pas produire de brouillage, et (2) l'utilisateur de l'appareil doit accepter tout brouillage radioélectrique subi, même si le brouillage est susceptible d'en compromettre le fonctionnement.

Use of Trademarks, Registered Trademarks, and other Protected Names and Symbols

This manual may make reference to trademarks, registered trademarks, and other protected names and/or symbols of third-party companies not related in any way to StarTech.com. Where they occur these references are for illustrative purposes only and do not represent an endorsement of a product or service by StarTech.com, or an endorsement of the product(s) to which this manual applies by the third-party company in question. StarTech.com hereby acknowledges that all trademarks, registered trademarks, service marks, and other protected names and/or symbols contained in this manual and related documents are the property of their respective holders.

Warranty Information

This product is backed by a three-year warranty.

For further information on product warranty terms and conditions, please refer to www.startech.com/warranty.

Limitation of Liability

In no event shall the liability of StarTech.com Ltd. and StarTech.com USA LLP (or their officers, directors, employees or agents) for any damages (whether direct or indirect, special, punitive, incidental, consequential, or otherwise), loss of profits, loss of business, or any pecuniary loss, arising out of or related to the use of the product exceed the actual price paid for the product. Some states do not allow the exclusion or limitation of incidental or consequential damages. If such laws apply, the limitations or exclusions contained in this statement may not apply to you.

Safety Measures

- If product has an exposed circuit board, do not touch the product under power.

Mesures de sécurité

- Si l'un des circuits imprimés du produit est visible, ne pas touchez le produit lorsqu'il est sous tension.

安全対策

- 製品に露出した状態の回路基盤が含まれる場合、電源が入っている状態で製品に触らないでください。

Misure di sicurezza

- Se il prodotto ha un circuito stampato visibile, non toccare il prodotto quando è acceso.

Säkerhetsåtgärder

- Rör aldrig vid enheter med oskyddade kretskort när strömmen är påslagen.

StarTech.com Ltd.

45 Artisans Cres
London, Ontario
N5V 5E9
Canada

StarTech.com LLP

2500 Creekside
Parkwy
Lockbourne, Ohio
43137
U.S.A.

StarTech.com Ltd.

Unit B, Pinnacle 15
Gowerton Rd,
Brackmills
Northampton
NN4 7BW
United Kingdom

FR: startech.com/fr
DE: startech.com/de
ES: startech.com/es
NL: startech.com/nl
IT: startech.com/it
JP: startech.com/jp