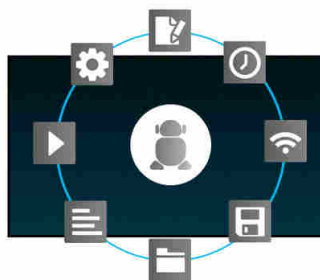




86" 4K UHD professional digital signage display with advanced control and connectivity options

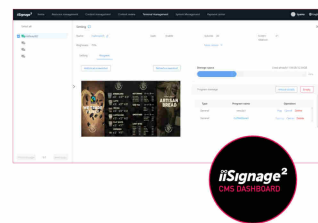
Elevate your visual communication with the LH8664UHS-B2AG and unlock the new possibilities for your business. This 500cd/m² high brightness display is a powerful business tool that takes your marketing and communication efforts to the next level. With its Android 11 OS, [iiSignage²](#) (Content Management Software), Signal FailOver and [EShare](#) features, this display offers a straightforward user experience, making content creation, management, and sharing a breeze. WiFi enabled, the display is ready for remote content delivery using your network or you can choose to utilise LAN control.

Its versatile orientation, sleek design, and 24/7 reliability ensure it seamlessly integrates into any business environment. Whether it's used in retail, corporate, hospitality, or educational settings, the LH8664UHS-B2AG will undoubtedly captivate your audience and leave a lasting impression.



Android OS

Thanks to Android OS, you can easily customize the display to your needs by installing applications directly to it.



iiSignage²

iiSignage² is our digital signage content management platform to easily show and control your content and to manage your displays in a secure way. The Content Management System (CMS) gives you total control of your messaging and advertising remotely and safely.

01 DISPLAY CHARACTERISTICS

| | |
|---|---|
| Design | Thin bezel |
| Diagonal | 85.6", 217.4cm |
| Panel | IPS, AG coated glass, matte finish, haze 25% |
| Native resolution | 3840 x 2160 @60Hz (8.3 MegaPixels 4K UHD) |
| Aspect ratio | 16:9 |
| Panel brightness | 500 cd/m ² |
| Static contrast | 1200:1 |
| Response time (GTG) | 8ms |
| Viewing zone | horizontal/vertical: 178°/178°, right/left: 89°/89°, up/down: 89°/89° |
| Colour support | 1.07G (8 Bits+FRC) (NTSC 72%) |
| Horizontal Sync | 28 - 160kHz |
| Viewable area W x H | 1895 x 1066mm, 74.6 x 41.9" |
| Bezel width (sides, top, bottom) | 14mm, 14mm, 16mm |
| Pixel pitch | 0.493mm |
| Bezel colour and finish | black, matte |

02 INTERFACES / CONNECTORS / CONTROLS

| | |
|------------------------------|--|
| Digital signal input | HDMI x3 (v.2.0, max. 3840x2160 @60Hz) |
| Audio input | Mini jack x1 (3.5mm) |
| Monitor control input | RS-232c x1 (2.5mm sub-mini jack) RJ45 (LAN) x1 IR x1 (3.5mm stereo mini) |
| Audio output | Mini jack x1 (3.5mm) Speakers 2 x 16W |
| HDCP | v.1.4 & 2.2 |
| USB ports | x2 (v.2.0) |

03 FEATURES

| | |
|-------------------------------------|--|
| Integrated software | Android 11 OS, iiSignage ² , FailOver, EShare |
| WiFi | yes (Built-in, 2.4G/ 5G) |
| Hardware | CPU: A53*4, GPU: G52 MP2, RAM: 2GB, ROM: 16GB |
| Extra | Wall mounting kit included (VESA 800x600mm) |
| Max. non-stop operating time | 24/7 |
| Anti image retention | yes |
| Media playback | yes |
| Housing (bezel) | metal |

04 GENERAL

| | |
|------------------------|--|
| OSD languages | EN, DE, FR, ES, IT, CN, RU, JP, CZ, NL, PL, SV, FI, DA, NB |
| Control buttons | Power button, Power Indicator, Remote Sensor |

User controls

picture (brightness, contrast, sharpness, black level, tint, colour, noise reduction, gamma selection, colour temperature, colour control, over scan, picture reset), screen (zoom mode, custom zoom, screen reset), audio (balance, treble, bass, volume, audio out, maximum volume, minimum volume, mute, audio out sync, speaker setting, audio reset), configuration 1 (switch on state, panel saving, RS232-routing, boot on source, WOL, configuration 1 reset, factory reset), configuration 2 (OSD timeout, OSD H-Position, OSD V-position, system rotation, information OSD, logo and animation logo setting, animation setting, monitor ID, monitor information, HDMI version, configuration 2 reset), advanced option (IR control, off timer, schedule, HDMI with one wire, HDMI with one wire power off, FailOver, language, OSD transparency, power saving, advanced option reset), Android settings (network & internet, apps & notifications, display, signage display, security, language & input, date & time, about device)

Plug&Play

DDC2B

05 MECHANICAL

Orientation landscape, portrait

Fanless design yes

VESA mounting 800 x 600mm

Operation temperature range 0°C - 40°C

Storage temperature range - 20°C - 60°C

MTBF 50.000 hours (excluding backlight)

06 ACCESSORIES INCLUDED

Cables power, HDMI, RS-232c

Guides quick start guide, safety guide

Other Wall mount bracket, Wall mount guide, Screws, Screw anchors, Stickers for screw holes

Remote control yes (batteries included)

07 POWER MANAGEMENT

Power supply unit internal

Power supply AC 100 - 240V, 50/60Hz

Power usage 145W typical, 0.5W stand by, 0.3W off mode

08 SUSTAINABILITY

Regulations CB, CE, TÜV-Bauart, EAC, RoHS support, ErP, WEEE, REACH

Energy efficiency class (Regulation (EU) 2017/1369) F

09 DIMENSIONS / WEIGHT

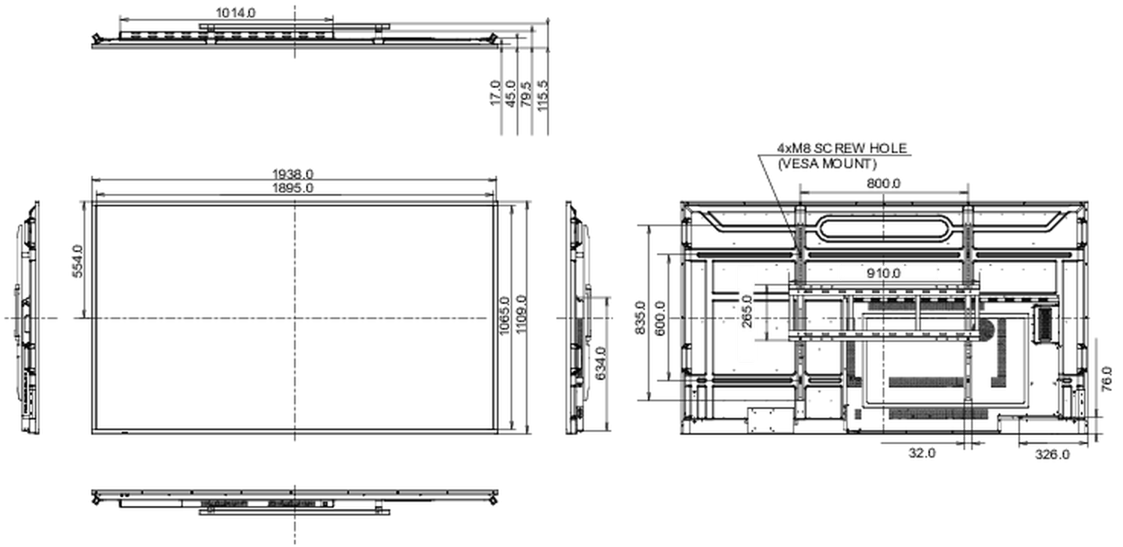
Product dimensions W x H x D 1937.8 x 1108.8 x 79.6mm

Box dimensions W x H x D 2125 x 1275 x 275mm

Weight (without box) 55.2kg

Weight (with box) 73.7kg

EAN code 4948570124916



All trademarks and registered trademarks acknowledged. E & O E. Specification subject to change without notice. All LCD's comply with ISO-9241-307:2008 in connection with pixel defects.

© IYAMA CORPORATION. ALL RIGHTS RESERVED