

# Slim & Robust Design with Outstanding Visibility

IP-Rated Outdoor Display | XE4F Series 55 49

With a slim & robust design, XE4F series can be easily installed to meet the customer's needs under in external environments that require complex installation conditions. And upgraded brightness captures the customer's attention even under strong and direct sunlight.



Slim & Light  
Design



Outstanding  
Visibility



IP56 Rated  
Dust/Water Proof



Easy Data Control  
& Maintenance

Train number	Class	Destination	Arrivals	Track	Numbering of wagons
709	High-speed	N.Novgorod-Moscow	14:58	1	rear
717	High-speed	Ivanovo-Moscow	10:50		head
084	Express	Adler-Moscow	11:25		rear
835	High-speed	Kovrov-Moscow	12:20		rear
142	Express	Lgov-Moscow	12:31		head
072	Platinum	Belgorod-Moscow	12:56		rear
058	High-speed	Stary Oskol-Moscow	13:10		rear
020	Express	Khar'kov-Moscow	15:52		head
7050	sub	Tula-Moscow	15:57		
737	High-speed	Ivanovo-Moscow	16:05		head
7081	sub	Vladimir-Moscow	16:09	8T	
701	High-speed	N.Novgorod-Moscow	16:20	1	rear





### Slim & Light Design

XE4F series composed of single display with a light and slim design and it can be easily customized to suit various external environments with no need for separate casing.



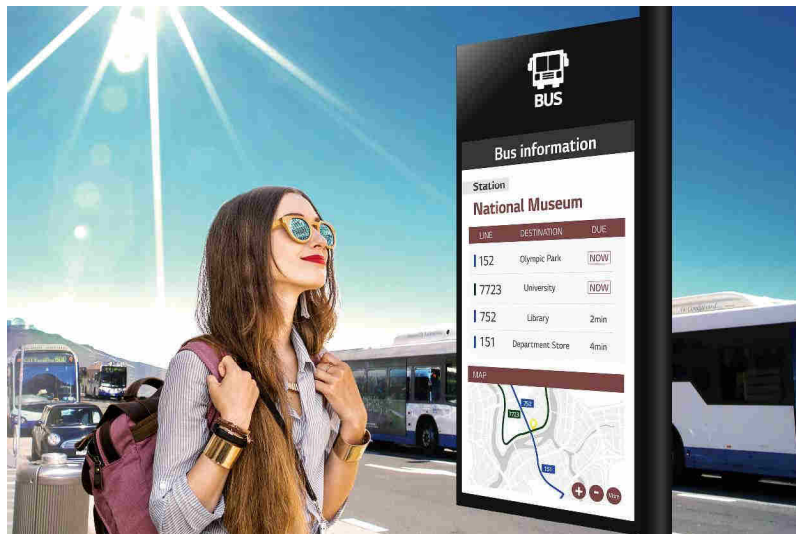
### Easy integration for partner's customized design

The XE4F series are lighter and ready to be customized for various customer needs and settings. From outdoor menu boards to kiosks, the XE4F series are also mount ready and optimized for customers, based on the industry destination and use.



## Bright & Brilliant

The XE4F series possess powerful brightness of 4,000nits, providing clear and vivid picture quality even under direct sunlight.



## Wide Viewing Angle

IPS technology provides better control of the liquid crystals, which in turn allows the screen to be viewed at virtually any angle.



## Long Lasting Brightness

By adding more LED units, XE4F operates brighter at a lower temperature, thereby lasting longer than conventional products.



## Visible with Polarized Sunglasses

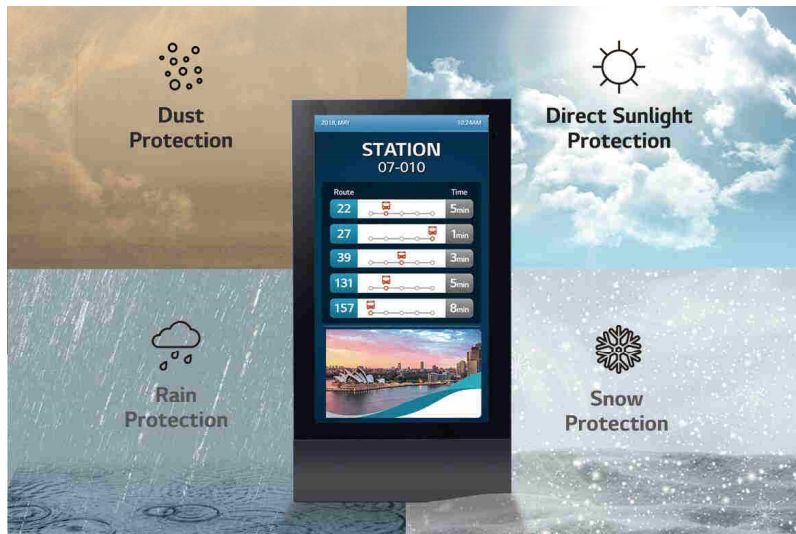
QWP\* enables clear visibility even when the viewer is wearing polarized sunglasses.



\* Quarter Wave Plate

## Secured Protection with IP56 Design

The display is sealed with IP56 design for reliable operation. It's designed to be not only waterproof but also weatherproof against the damaging effects of the sun, rain, snow, dust and wind, an essential feature for outdoor application.



## Protective Glass (IK10 Certified)

The tempered and laminated front glass ensures optimum protection from outdoor extremities, resulting in minimal to no damage from external impacts.



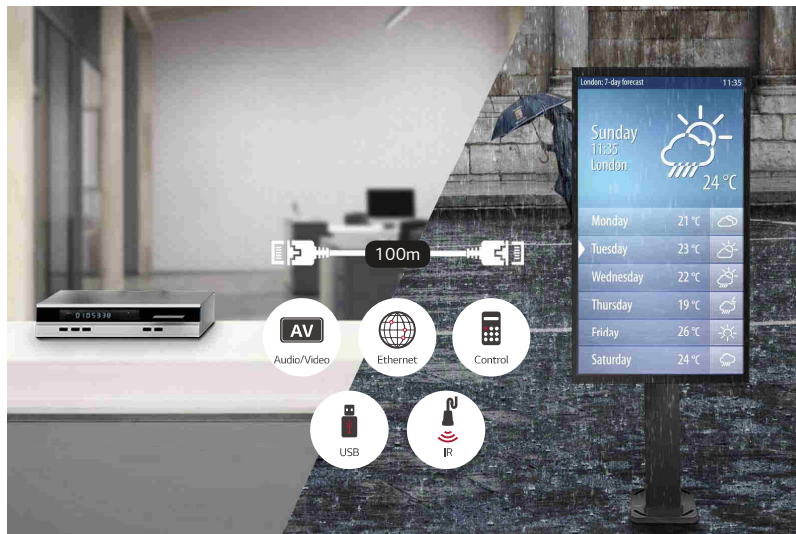
\* The image is for illustrative purposes only

\*\*IK rating refers to the degree of resistance against external impacts on a scale of 0 to 10. (10 indicates the highest level of protection.)



## Support HDBaseT™

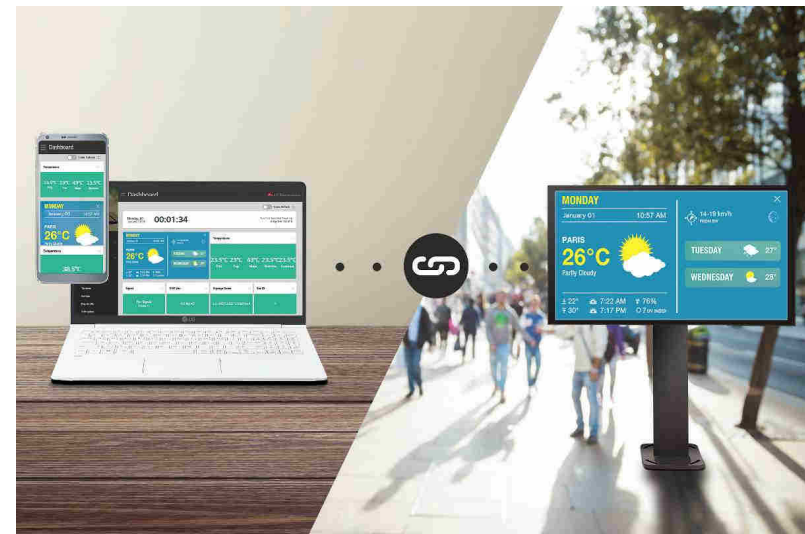
XE4F Series support HDBaseT™, the global standard for the transmission of ultra-high definition video & audio, Ethernet, controls, USB and IR over a single, long-distance cable, for easier control of the display and saving installation and maintenance costs.



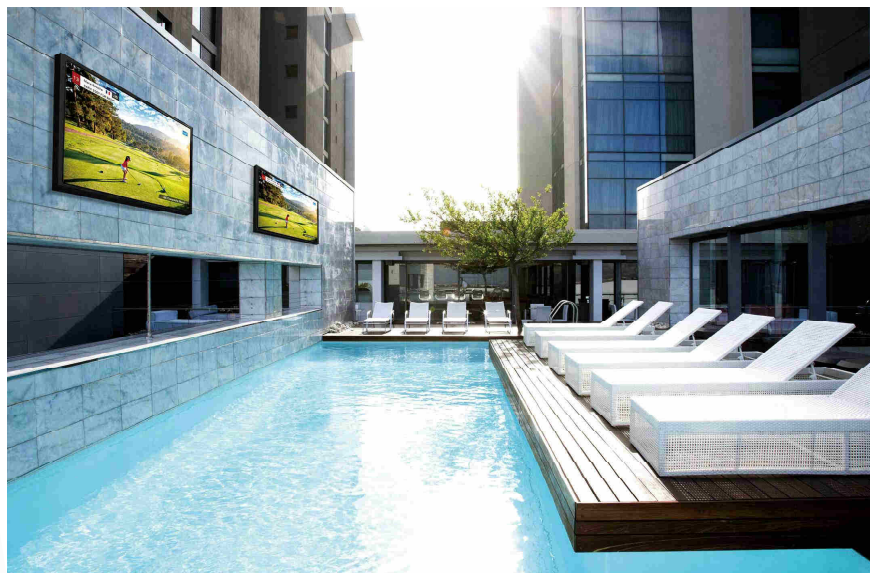
\* XE4F Series don't support the power supply

## Web Monitoring

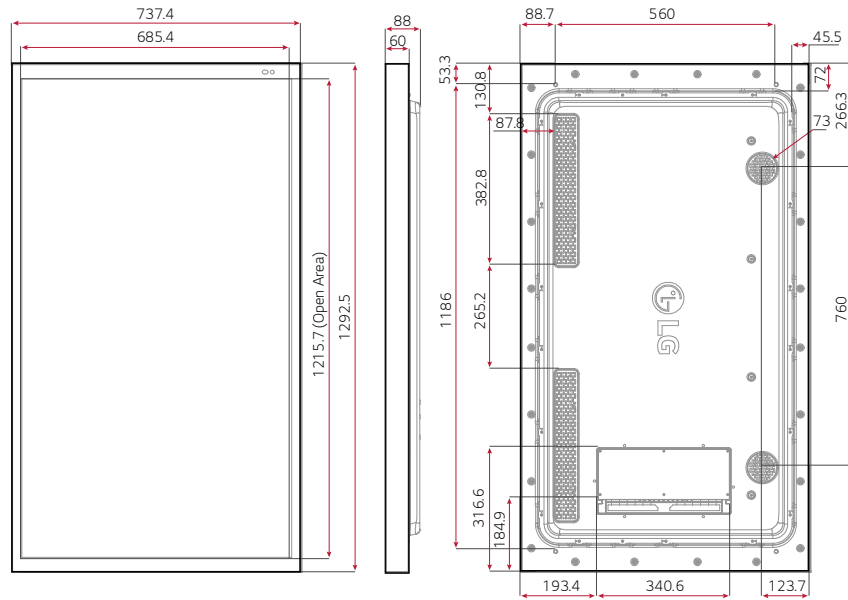
This web-based monitoring solution is user-friendly and allows the user to be at ease. It enables the user to have full access anywhere at anytime from their mobile phone while having access to both current and past data. It allows the user to monitor the unit, make adjustments, and control the unit remotely in real time.



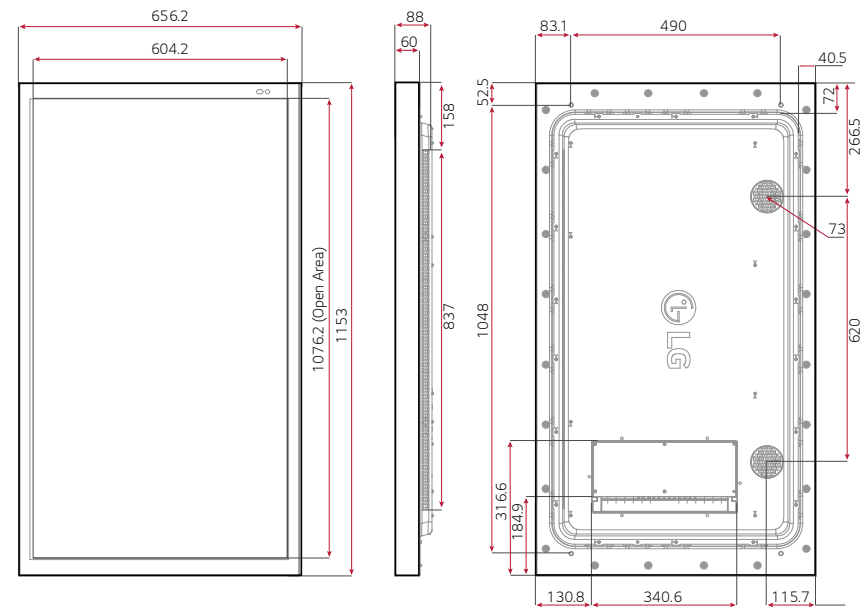
\* The image is for illustrative purposes only



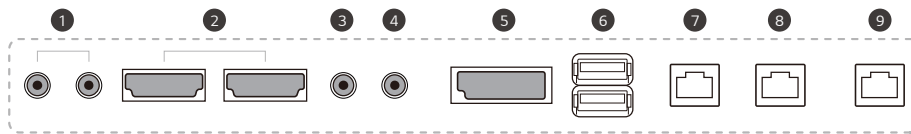
55XE4F



49XE4F



CONNECTIVITY



- ① SPEAKER OUT
- ② HDMI IN
- ③ RS232C IN
- ④ RS232C OUT
- ⑤ DP IN
- ⑥ USB IN
- ⑦ LAN IN
- ⑧ LAN OUT
- ⑨ HDBaseT IN





XE4F Series		55XE4F	49XE4F
PANEL	Screen Size	55	49
	Panel Technology	IPS, M+(WRGB)	IPS, M+(WRGB)
	Back Light Type	Direct	Direct
	Aspect Ratio	16 : 9	16 : 9
	Native Resolution	1,920 x 1,080 (FHD, WRGB)	1,920 x 1,080 (FHD, WRGB)
	Brightness	4,000 cd/m <sup>2</sup> (Typ.), 3,200 cd/m <sup>2</sup> (Min.)	4,000 cd/m <sup>2</sup> (Typ.), 3,200 cd/m <sup>2</sup> (Min.)
	Contrast Ratio	1,200:1	1,300:1
	Dynamic CR	500,000:1	500,000:1
	Viewing Angle (H x V)	178 x 178	178 x 178
	Response Time	Typ. 9ms (G to G BW)	Typ. 8ms (G to G BW)
	Surface Treatment (Haze, Quarter Wave Plate)	Haze 3%, QWP	Haze 3%, QWP
	Local dimming	48 Blocks	48 Blocks
	Life Time (Typ.)	50,000 Hrs	50,000 Hrs
	Operation Hours	24 Hrs	24 Hrs
Orientation	Portrait & Landscape	Portrait & Landscape	
CONNECTIVITY	Input	HDMI(2), DP, HDBaseT, USB(2)	
	Output	External Speaker Out(L/R)	
	External Control	RS232C In/Out, RJ45(LAN) In/Out	
PHYSICAL SPECIFICATION	Protection Glass	5mm(IK 10, Degree of Protection, Tempered, Anti-Reflective)	5mm(IK 10, Degree of Protection, Tempered, Anti-Reflective)
	Bezel Color	Black	Black
	Bezel Width	38.4mm(T/B), 26.0mm(L/R)	38.4mm(T/B), 26.0mm(L/R)
	Monitor Dimension (W x H x D)	737.4 x 1,292.5 x 88.0mm	656.2 x 1153 x 88.0mm
	Weight (Head)	40kg	32Kg (TBD)
	Packing Dimensions (W x H x D)	1,446 x 890 x 207 mm	1,286 x 797 x 207mm
	Packed Weight	45kg	37Kg (TBD)
	Handle	X	X
KEY FEATURE	webOS4.0 Platform, Internal Memory(16G, System 4GB+ Available 12GB) Temperature Sensor, Auto Brightness sensor, BLU Sensor, Pixel sensor, Gyro Sensor, Humidity Sensor Outdoor API control, HDBaseT, WOL, webRTC, Control Manager; DPM, Smart Energy Saving		
ENVIRONMENT CONDITIONS	Operation Temperature	-30°C to 50 °C	-30°C to 50 °C
	Operation Humidity	5 % to 100 %	5 % to 100 %
POWER	Power Supply	100-240V~, 50/60Hz	100-240V~, 50/60Hz
	Power Type	Built-In Power	Built-In Power
POWER CONSUMPTION	Typ./Max.	310/390W	290/370W
	Smart Energy Saving	170W	170W
CERTIFICATION	Safety	IEC 60950-1 / EN 60950-1 / UL 60950-1	IEC 60950-1 / EN 60950-1 / UL 60950-1
	EMC	FCC Class "A" / CE / KCC	FCC Class "A" / CE / KCC
	ErP / Energy Star	ErP "C" / NA	ErP "C" / NA
SOFTWARE COMPATIBILITY	SuperSign	Yes(CMS, Control)	Yes(CMS, Control)
	Signage365Care	Yes	Yes
ACCESSORY	Basic	Remote Controller, Manual(EIG, IG, OM), Regulation Book, Phone to RS232C Gender, HDMI Cable, POWER CABLE, Battery	



- [www.lg.com/b2b](http://www.lg.com/b2b)
- [www.youtube.com/c/LGCommercialDisplay](https://www.youtube.com/c/LGCommercialDisplay)
- [www.facebook.com/LGInformationDisplay](https://www.facebook.com/LGInformationDisplay)
- [www.linkedin.com/company/LGInformationDisplay](https://www.linkedin.com/company/LGInformationDisplay)

LG may make changes to specifications and product descriptions without notice.  
Copyright © 2019 LG Electronics Inc. All rights reserved. "LG Life's Good" is a registered trademark of LG Corp.  
The names of products and brands mentioned here may be the trademarks of their respective owners.

