

## ALOGIC 1m LC-LC 40G/100G Multi Mode Duplex LSZH Fibre Cable 50/125 OM4

**Brand :** ALOGIC

**Product code:** LCLC-01-OM4

**Product name :** 1m LC-LC 40G/100G Multi Mode Duplex LSZH Fibre Cable 50/125 OM4

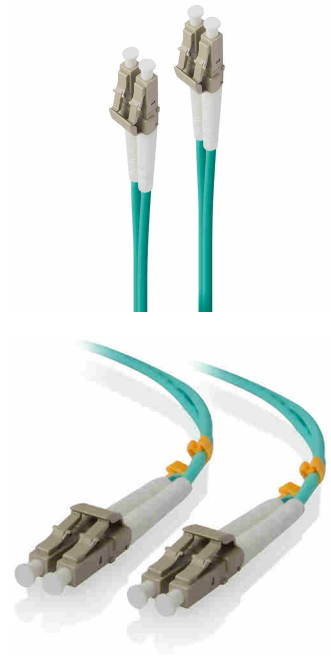
- Supports 100Gigabit applications.
- Multi Mode OM4 fibre optic cable.
- Available in various lengths starting from 0.5m to 20m length.
- Low Smoke Zero Halogen Jacket for minimal toxic emissions in case of fire.
- 100% optically tested and provided with test reports.

ALOGIC 1m LC-LC 40G/100G Multi Mode Duplex LSZH Fibre Cable 50/125 OM4

**ALOGIC 1m LC-LC 40G/100G Multi Mode Duplex LSZH Fibre Cable 50/125 OM4:**

The Multi Mode OM4 cables are designed to support very high transfer speed, the cables are capable of supporting up to 100gigabit applications at the same time being backward compatible with OM3 and OM2 infrastructure. The cables meet or exceed industry standard specifications; each cable is individually tested for maximum reliability and comes with performance reports. The ALOGIC OM4 Patch Cables are available in various lengths starting from 0.5m to 20m length.

ALOGIC 1m LC-LC 40G/100G Multi Mode Duplex LSZH Fibre Cable 50/125 OM4. Cable length: 1 m, Fibre optic type: OM4, Connector 1: LC, Connector 2: LC, Core diameter: 50 µm, Full duplex



Features		Features	
Cable length *	1 m	Ethernet interface type	40 Gigabit Ethernet, 100 Gigabit Ethernet
Fibre optic type	OM4	Data transfer rate	100 Gbit/s
Connector 1 *	LC	Insertion loss	0.5 dB
Connector 2 *	LC	Jacket material *	Low smoke zero halogen (LSZH)
Connector 1 gender *	Male	Certification	ETL/c-ETL
Connector 2 gender *	Male		
Product colour *	Turquoise	<b>Weight &amp; dimensions</b>	
Full duplex	✓	Cable diameter	3 mm
Core diameter	50 µm	<b>Packaging data</b>	
Cladding diameter	125 µm	Quantity per pack	1 pc(s)
Fiber mode structure	Multi-mode	<b>Logistics data</b>	
Wavelengths supported	850,1300 nm	Harmonized System (HS) code	85447000
		<b>Other features</b>	
		Number of optical fibres	2



9350784004932

Disclaimer. The information published here (the "Information") is based on sources that can be considered reliable, typically the manufacturer, but this Information is provided "AS IS" and without guarantee of correctness or completeness. The Information is only indicative and can be changed at any time without notification. No rights can be based on the Information. Suppliers or aggregators of this Information do not accept any liability with regard to the content of (web)pages and other documents, including its Information. The publisher of the Information can not be held liable for the content of 3rd party websites that are linking this Information or are linked to from this Information. You as the User of the Information are solely responsible for the choice and usage of this Information. You are not entitled to transfer, copy or otherwise multiply or distribute the Information. You are obliged to follow the directions of the copyright owner(s) with regard to the use of the Information. Exclusively Dutch law is applicable. With regard to price and stock data on the site, the publisher followed a number of starting points, which are not necessarily relevant for your private or business circumstances. Therefore, the price and stock data are only indicative and are subject to changes. You are personally responsible for the way you use and apply this information. As a user of the Information or sites or documents in which this Information is included, you will adhere to standard fair use including avoidance of spamming, ripping, intellectual-property violations, privacy violations, and any other illegal activity.

Publication date: 06-NOV-2024. Prints or copies of Information are only valid on the printed Publication date