

BENQ

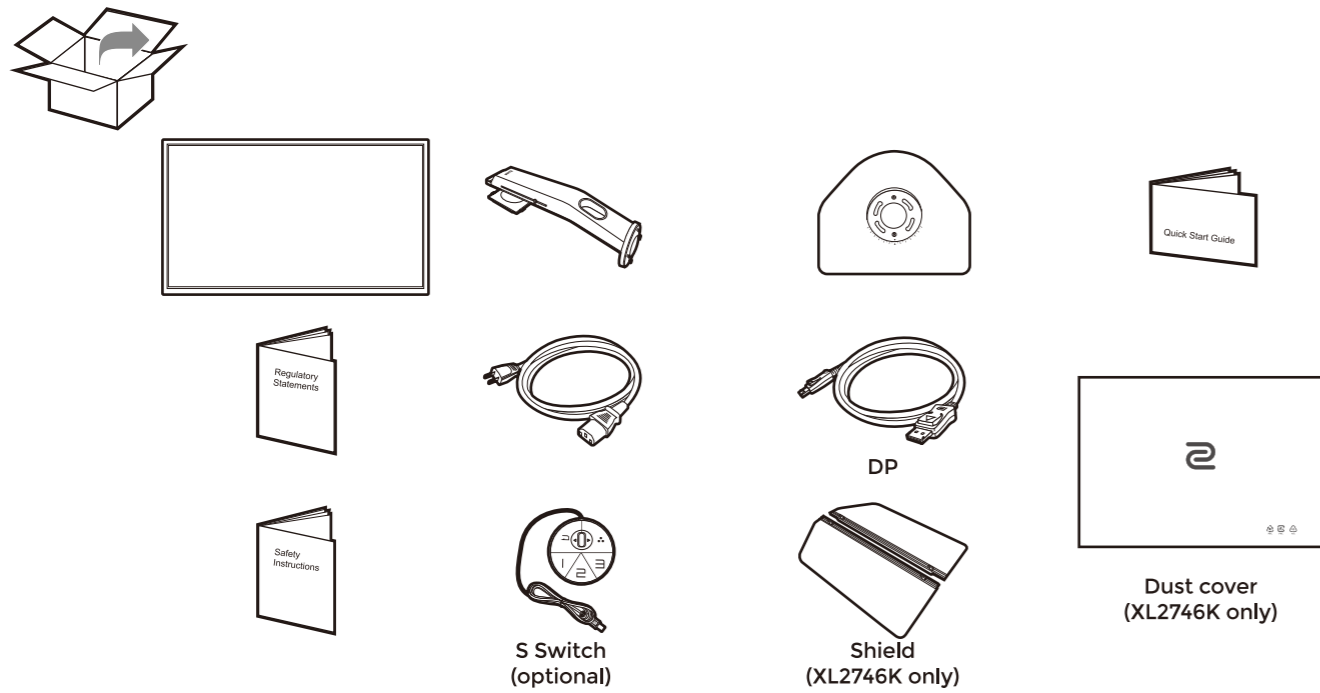
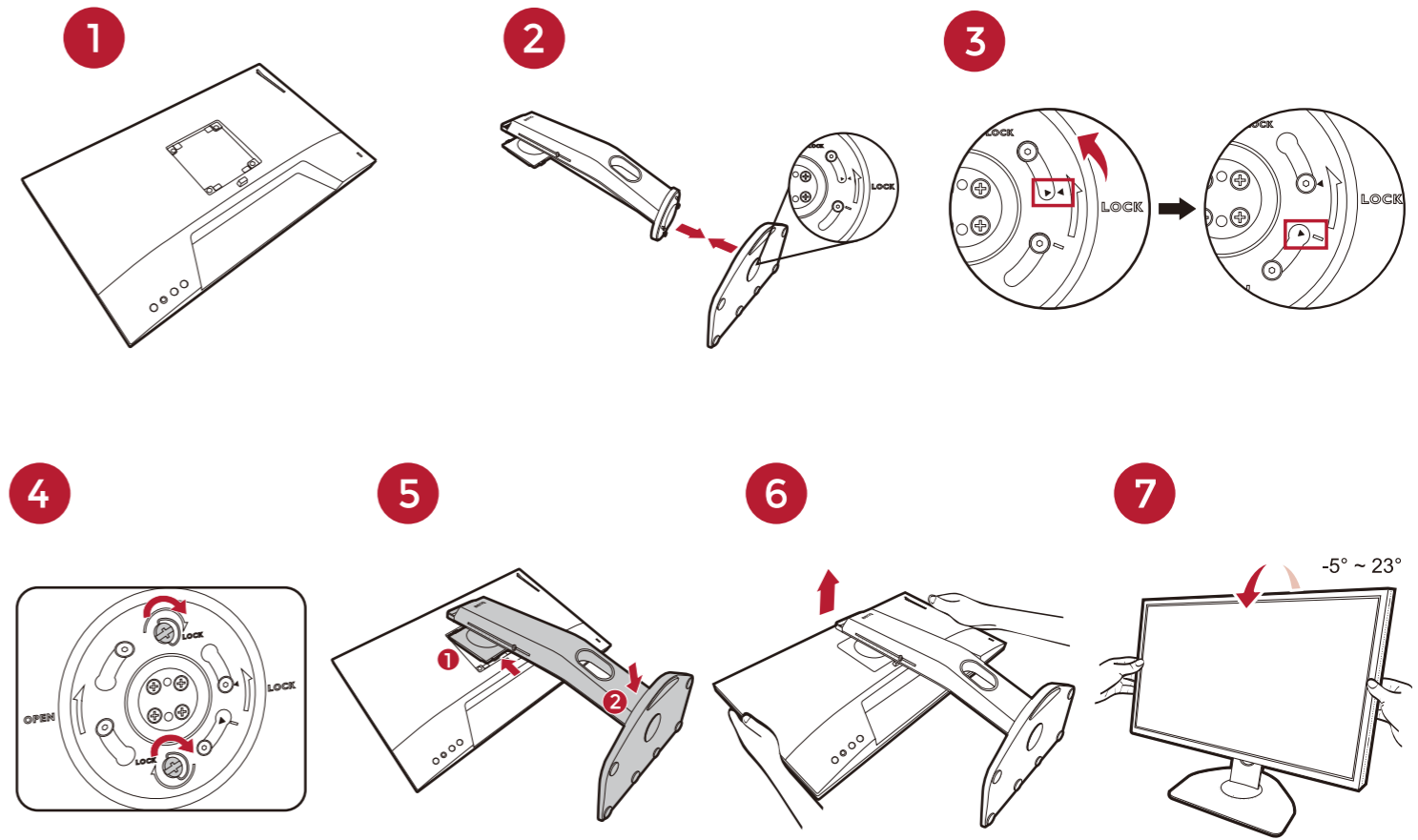


XL MONITOR FOR e-SPORTS

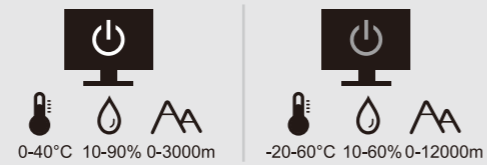
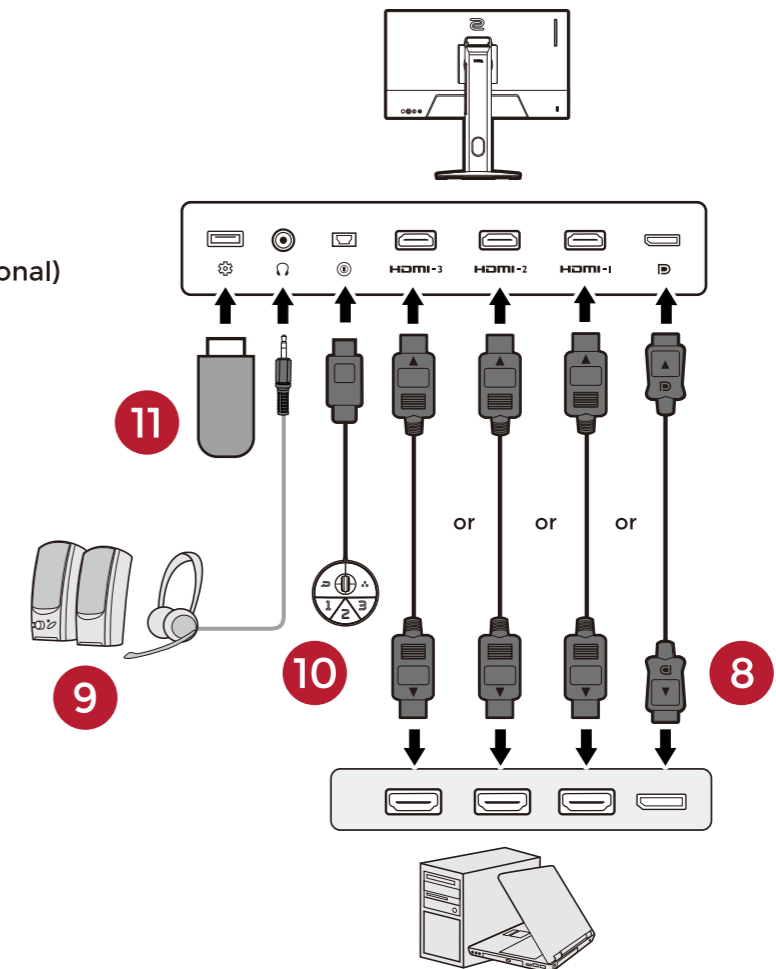
XL Series
Quick Start Guide

DN: Z-XL27K-EQ-V1

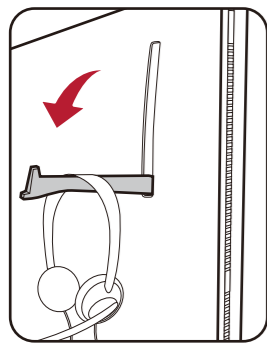
© 2021 BenQ Corporation. All rights reserved. Rights of modification reserved.



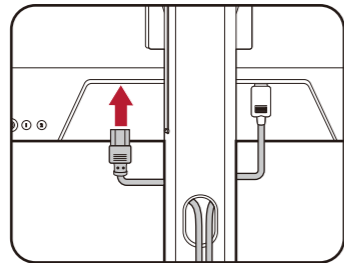
- 8 Video
- 9 Audio (optional)
- 10 S Switch (optional)
- 11 Firmware update (optional)



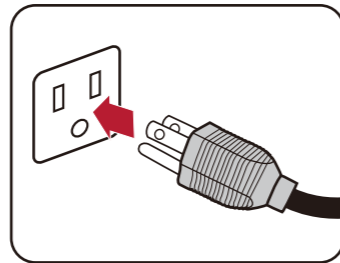
12



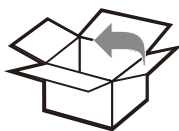
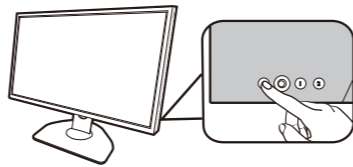
13



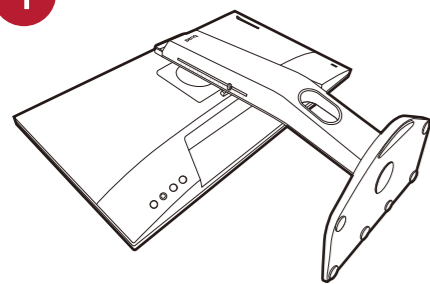
14



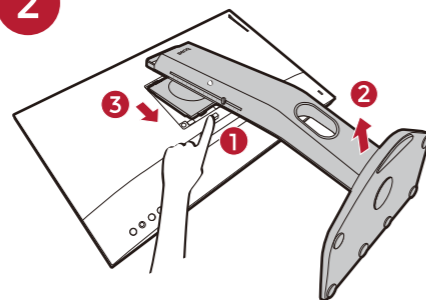
15



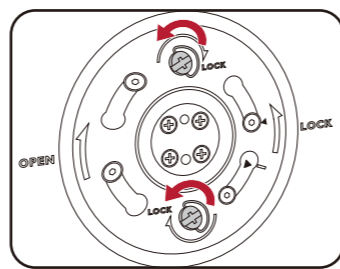
1



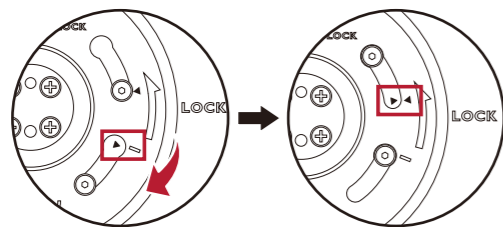
2



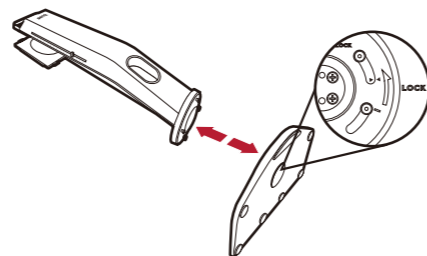
3



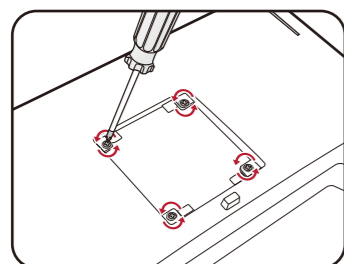
4



5

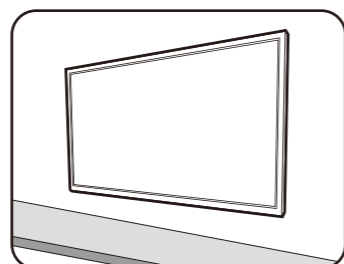


1



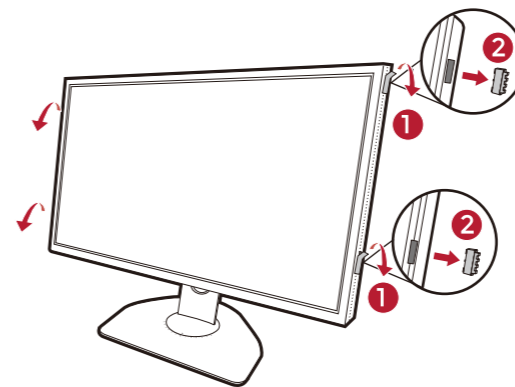
M4 x 10 mm

2

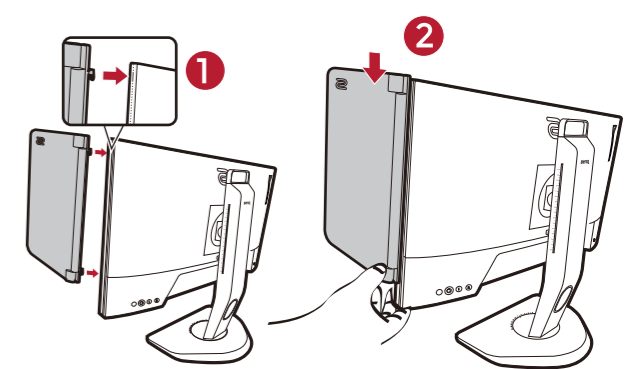


Installing the Shield (optional step)

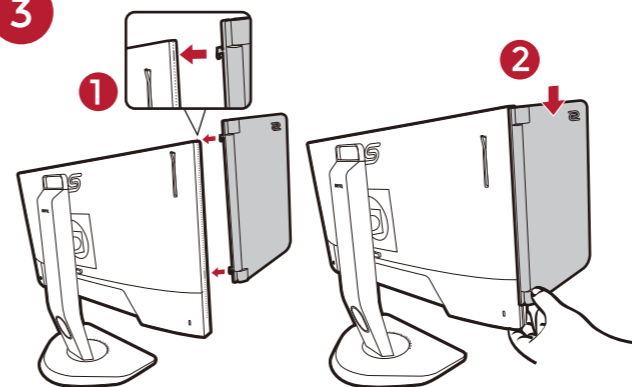
1



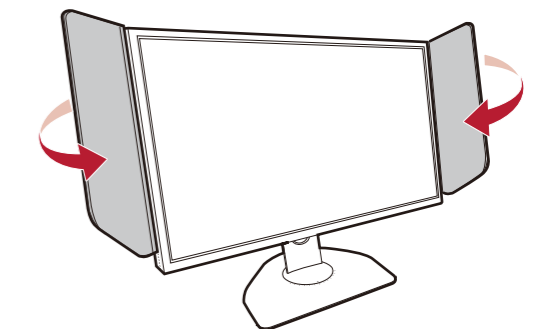
2



3



4



Firmware update (optional step)

Internet café mode is recommended for cybercafe managers. Please activate it as desired while updating.

1



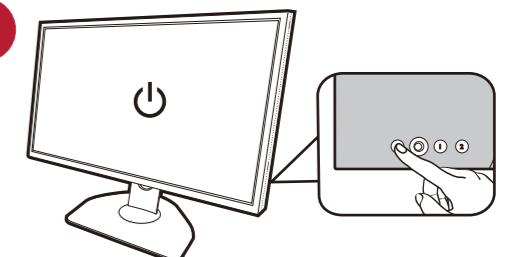
2



Firmware (*.bin files)

ZOWIE.BenQ.com > Support > Download & FAQ > model name > Driver

2



Restart the monitor. Follow the on-screen instructions.

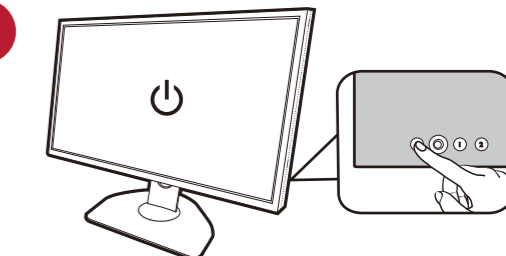
3



4



4



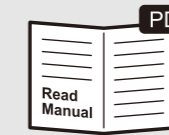
Press the power key to reboot the monitor to finish.



APP

XL Setting to Share

ZOWIE.BenQ.com > Support > Download & FAQ > Model name > Software



PDF

Read Manual

ZOWIE.BenQ.com > Support > Download & FAQ > Model name > User Manual



For product support and more information.