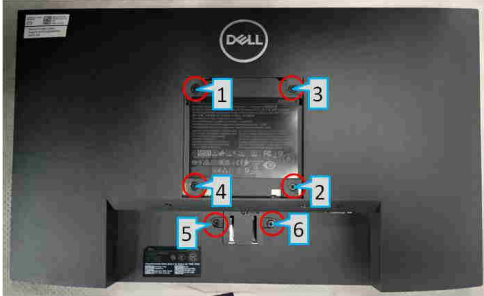


DELL E2222H Teardown Instruction

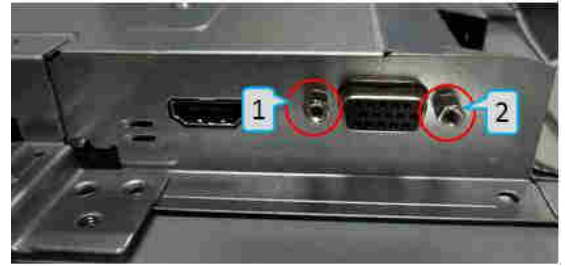
S1

1. Remove Rear Cover Screw and Stand Screws
 - a. Remove screws "1~6" on rear cover with electric screwdriver
 - b. Torque: 12. 1"# .5%&"cm()hilli*s screwdriver



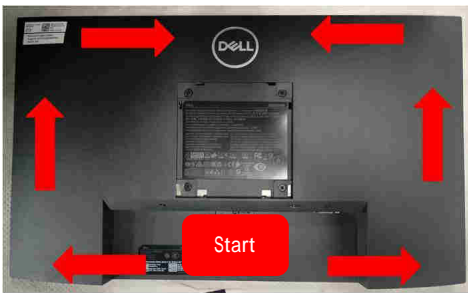
S4

- +. Remove , - . screw
 - a. Remove screws "1~2" with electric screwdriver
 - b. Torque: 12. 1"# .5%&"cm(he/ screwdriver



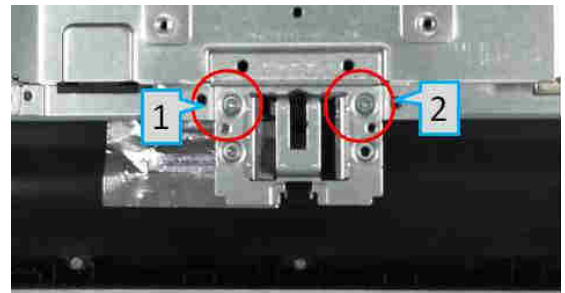
S2

2. Remove Rear Cover
 - a.)r0 o'' the bac1 cover o' the machine with the aid o' the dismantlin& 'i/ture(in the sequence o' "2ottom#34e't"Ri&ht# 3To*"



S5

- \$. Remove Chassis Screw
 - a. Remove screws "1~2" with electric screwdriver
 - b. Torque: 5.\$!"# .5%&"cm()hilli*s screwdriver



S3

- b. Remove 4i&ht 2ar and %e0*ad Cable:
 - a. Remove acetate cloth ta*e mar1ed with "1"(then remove li&ht bar 6&ras* on)in then *ull outwards to remove7
 - b. Remove %e0*ad cable "2"



S6

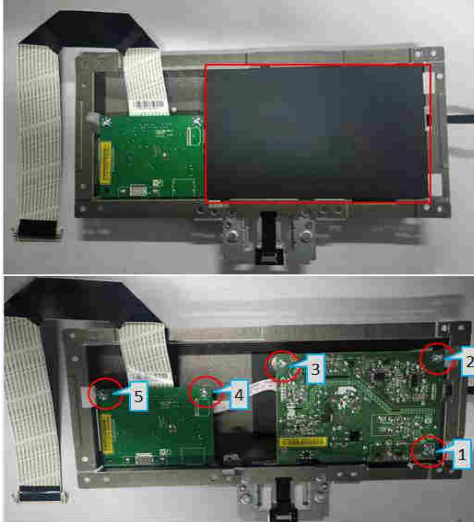
6. Remove . luminium 8oil and 4, 9S Cable
 - a. Remove aluminium ta*e then remove 4, 9S cable 6)inch on cli*s on the sides7



DELL E2222H Teardown Instruction

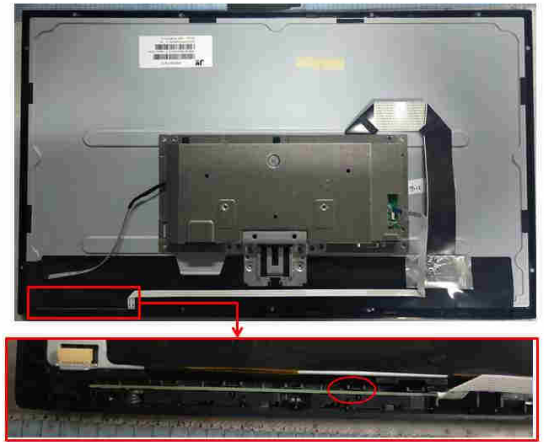
S:

- . Remove C2. 1
- a. Remove molar (squared in red in the upper picture)
- b. Remove round screw "1" then lock in screws marked "2-5" with electric screwdriver
- c. Torque: 0.5 N·m (0.44 in·lb) with screwdriver



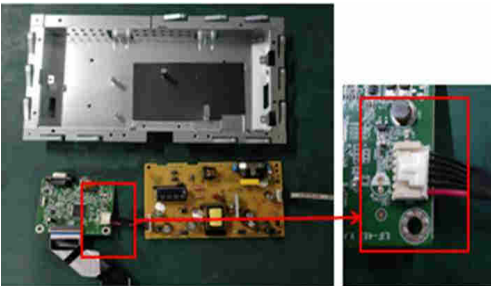
S1

- 1. Remove pad
- a. Remove pad from front cover (loosen hole circled in red first)



S8

- . Remove C2. 2
- a. Remove board and board
- b. Separate board from board



S11

- 11. Remove components on board 1
- a. Remove electrolytic capacitor (32mm height) (squared in red) from printed circuit boards
- b. Cut the trace between bulb 1 and C2. with knife - ensure cutting path within the trace (don't touch bulb 1 and C2).



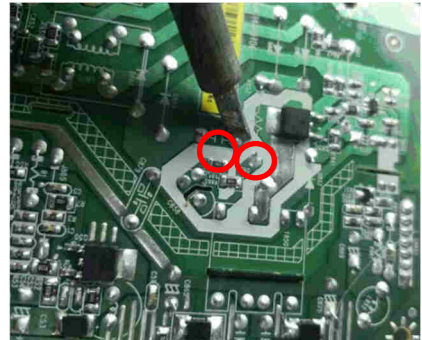
S9

- . Remove 4, 9S Cable and Height 2ara
- a. Remove light bar from board (ras on) in then pull upwards to remove
- b. Remove 4, 9S cable from board (lit cover before remove)



S12

- 12. Remove components on board 2
- a. Take out the capacitor (in solder with soldering iron)
- b. Lift the bulb capacitor away from power board



DELL E2222H Teardown Instruction

1. Product Material Information

The following substances (materials) or components should be disposed of or recovered separately from other WEEE in compliance with Article 6 of the EU Council Directive 2002/96/EC.

Capacitors (Condensers) containing PCB	Dot used
Mercury containing components	Dot used
Batteries	Dot used
Printed circuit boards (with surface area greater than 1 square cm)	Product has printed circuit boards (with surface area greater than 1 square cm)
Component contain toner (ink) and liquids	Dot used
Elastic containing PBR	
Component and waste contain asbestos	Dot used
CRT	Dot used
Component contain PCB (ECBC, E-C and EC)	Dot used
Gas discharge lamps	Dot used
AC discharge 3.1 cm ²	Product AC discharge greater than 1 cm ²
External electric cable	Product has external cables
Component contain refractory ceramic fibers	Dot used
Component contains radioactive substances	Dot used
Electrolyte capacitors (height 3.2mm) (diameter 3.2mm)	Product has electrolyte capacitors (height 3.2mm) (diameter 3.2mm)

2. Tools Required

List the type and size of the tools that would typically be used to disassemble the product to a point where components and materials requiring selective treatment can be removed.

Tool Description:

- # Screwdriver (Phillips) head with 5 mm H 5 mm
- # Screwdriver (Eaton) to remove , - . connector
- # Soldering iron
- # Knife