

DS-LEDTK Models



Universal Trim Kit

FOR dvLED VIDEO WALLS 89mm TO 150mm DEEP

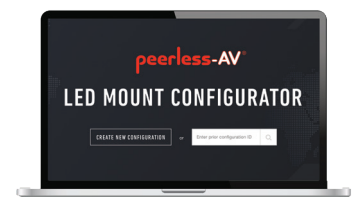
Perfect your next dvLED video wall installation by adding the Peerless-AV® Universal Trim Kit. This sleek accessory is designed to cover the unsightly sides of dvLED displays and give the video wall a completely finished appearance. The Trim Kit's universal and depth adjustable design attaches to the wall, allowing it to go all the way around the border of any video wall that is 89mm to 150mm deep. The Trim Kit also comes in multiple size options and can be cut to length in the field, providing a custom fit to the specific video wall being installed. This accessory is lightweight and easy to install, providing installers with a simple solution to create a SEAMLESS dvLED video wall.

- Aesthetically pleasing Trim Kit finishes off the video wall by covering the unsightly sides of the dvLED display
- Trim section options, that are solid and 70% vented, allow you to select the perfect combination for your video wall install*
- Universal and depth adjustable design attaches to the wall, allowing it to go around any video wall that is 89mm to 150mm deep
- The Trim Kit can be cut to length in the field, allowing it to be stocked and ready for immediate shipment
- Sections measuring 5', 6' and 8' are packaged in easy to handle cardboard tubes

* Customer is responsible for making sure the ventilation selected is right for their video wall requirements.

SLEEK DESIGN

Provides an aesthetically pleasing installation and final look



Visit Peerless-AV.com/SEAMLESS to get your project started!

Product Specifications

| | DIMENSIONS (W x H x D) | PRODUCT WEIGHT | FINISH | AVAILABLE COLORS |
|-------------|---|--------------------------|-------------|------------------|
| DS-LEDTK-C | Corner: 1.5" x 2.9" x 2.9" (38 x 74 x 74mm) | Corner: 4.0lb (1.8kg) | Powder Coat | Magic Black II |
| DS-LEDTK-5S | 5' Solid: 1.5" x 3.5-5.9" x 60" (38 x 89-150 x 1524mm) | 5' Solid: 7.3lb (3.3kg) | | |
| DS-LEDTK-6S | 6' Solid: 1.5" x 3.5-5.9" x 72" (38 x 89-150 x 1829mm) | 6' Solid: 8.7lb (4.0kg) | | |
| DS-LEDTK-8S | 8' Solid: 1.5" x 3.5-5.9" x 96" (38 x 89-150 x 2438mm) | 8' Solid: 11.6lb (5.3kg) | | |
| DS-LEDTK-5V | 5' Vented: 1.5" x 3.5-5.9" x 60" (38 x 89-150 x 1524mm) | 5' Vented: 5.8lb (2.6kg) | | |
| DS-LEDTK-6V | 6' Vented: 1.5" x 3.5-5.9" x 72" (38 x 89-150 x 1829mm) | 6' Vented: 6.2lb (2.8kg) | | |
| DS-LEDTK-8V | 8' Vented: 1.5" x 3.5-5.9" x 96" (38 x 89-150 x 2438mm) | 8' Vented: 7.7lb (3.5kg) | | |

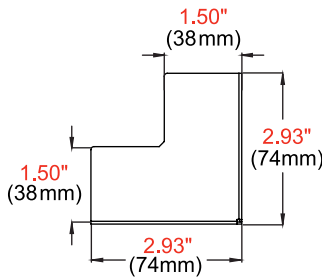
Package Specifications

| | PACKAGE SIZE (Cardboard Tube) | PACKAGE SHIP WEIGHT | PACKAGE UPC CODE | PACKAGE CONTENTS | UNITS IN PACKAGE |
|-------------|--|---------------------------|------------------|---------------------|------------------|
| DS-LEDTK-C | Corner: 5.25" x 20.0" (133 x 508mm) | Corner: 5.0lb (2.3kg) | 735029338888 | Trim and Corner Kit | 1 Kit |
| DS-LEDTK-5S | 5' Solid: 5.25" x 63.5" (133 x 1612mm) | 5' Solid: 8.7lb (4.0kg) | 735029338802 | | |
| DS-LEDTK-6S | 6' Solid: 5.25" x 75.5" (133 x 1917mm) | 6' Solid: 10.8lb (4.9kg) | 735029338826 | | |
| DS-LEDTK-8S | 8' Solid: 5.25" x 99.5" (133 x 2527mm) | 8' Solid: 14.5lb (6.6kg) | 735029338833 | | |
| DS-LEDTK-5V | 5' Vented: 5.25" x 81.5" (133 x 2070mm) | 5' Vented: 8.0lb (3.6kg) | 735029338819 | | |
| DS-LEDTK-6V | 6' Vented: 5.25" x 85.0" (133 x 2159mm) | 6' Vented: 8.4lb (3.8kg) | 735029338864 | | |
| DS-LEDTK-8V | 8' Vented: 5.25" x 113.0" (133 x 2870mm) | 8' Vented: 11.5lb (5.2kg) | 735029338871 | | |

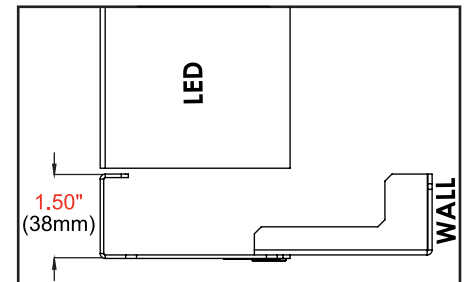
All dimensions = inch (mm)

| DIMENSION "A" | DIMENSION "B" |
|---------------|---------------|
| 5 ft | 3.5" - 5.9" |
| 6 ft | |
| 8 ft | |

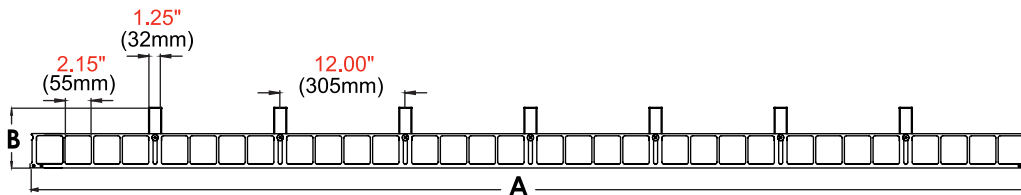
| DIMENSION "A" | DIMENSION "B" |
|---------------|---------------|
| 1524mm | 89 - 150mm |
| 1829mm | |
| 2438mm | |



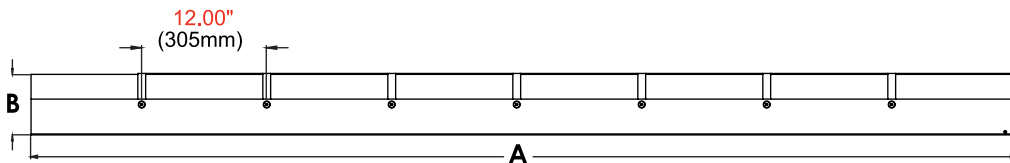
CORNER CAPS



DETAIL



VENTED TOP VIEW



SOLID TOP VIEW

Architect Specifications

The Universal Trim Kit shall be a Peerless-AV model DS-LEDTK Models and shall be located where indicated on the plans. Assembly and installation shall be done according to instructions provided by the manufacturer.

Visit peerless-av.com to see the complete line of AV solutions from Peerless-AV, including outdoor displays, kiosks, digital audio, display mounts, projector mounts, carts/stands, and a full assortment of accessories.

Peerless-AV
 2300 White Oak Circle
 Aurora, IL 60502 USA
(800) 865-2112
(630) 375-5100
Fax: (800) 359-6500

Peerless-AV EMEA
 Unit 3 Watford Interchange
 Colonial Way, Watford
 Herts, WD24 4WP
 United Kingdom
+44 (0) 1923 200100
Fax: +44 (0) 1923 200101

Peerless-AV Latin America
 Av. de las Industrias 413
 Parque Industrial Escobedo
 General Escobedo, N.L.,
 México, 66062
+52 (81) 8384-8300
Fax: +52 (81) 8384-8360

