




RE200 AC750 Wi-Fi Range Extender


Stable Dual Band
Wi-Fi Extension



RE200

 300Mbps+
433Mbps

 Intelligent Signal
Indicator Light

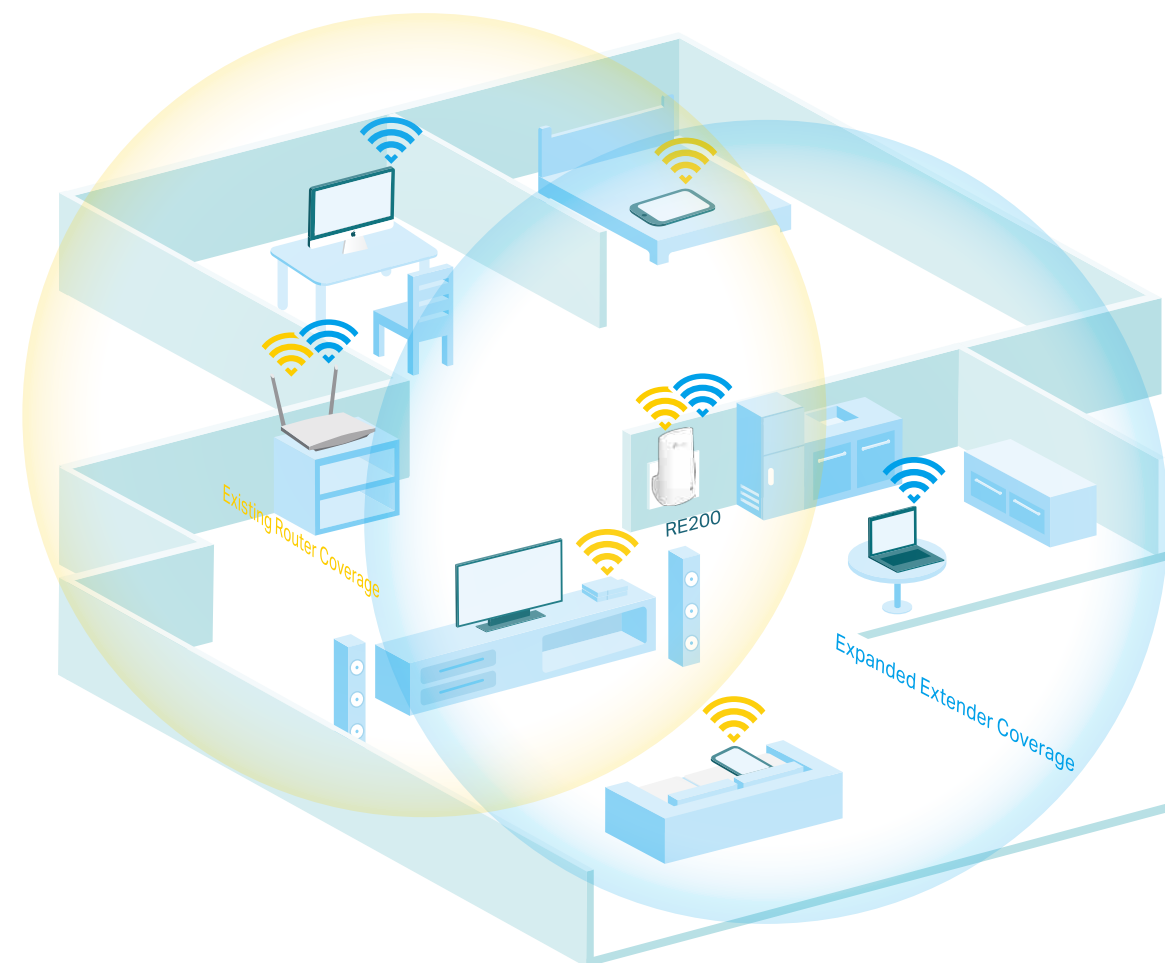
 Access
Point Mode

 Tether
App

Highlights

Extend the Range of Your Wi-Fi Network

The AC750 Wi-Fi Range Extender connects to your router wirelessly, strengthening and expanding its signal into areas it can't reach on its own, achieving speeds of 300Mbps on the 2.4GHz band and 433Mbps on the 5GHz band.

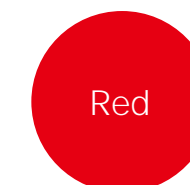


Perfect Location at a Glance

An Intelligent Signal light helps you quickly find the best location to install the range extender.

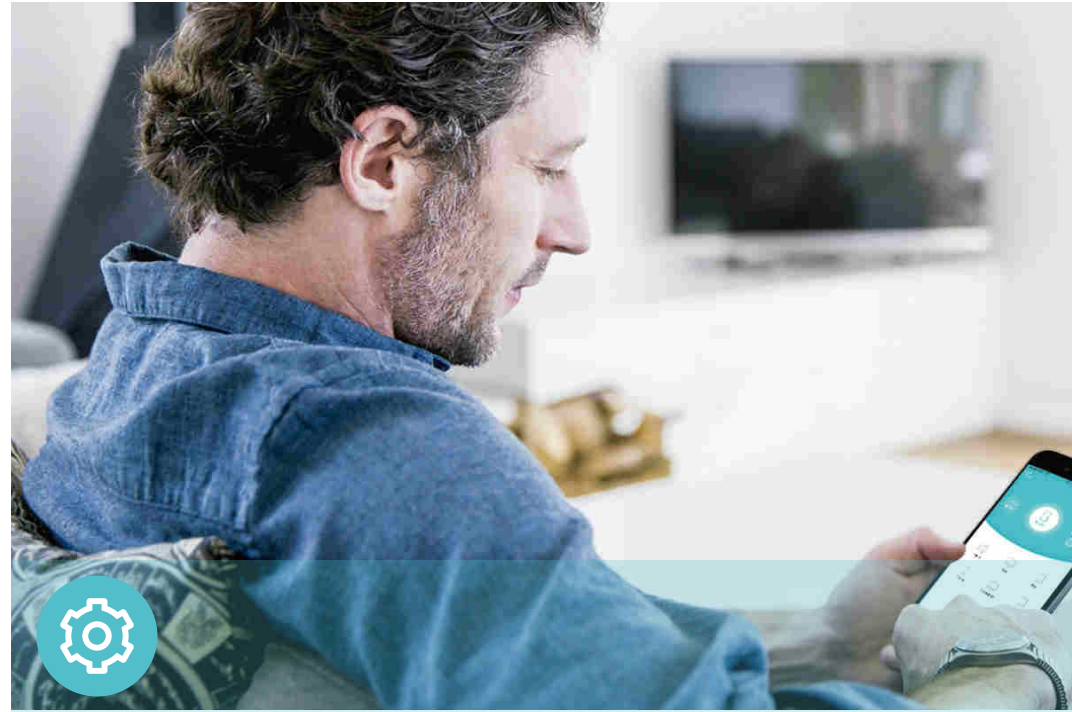


Good location



Too far away from the router

Features



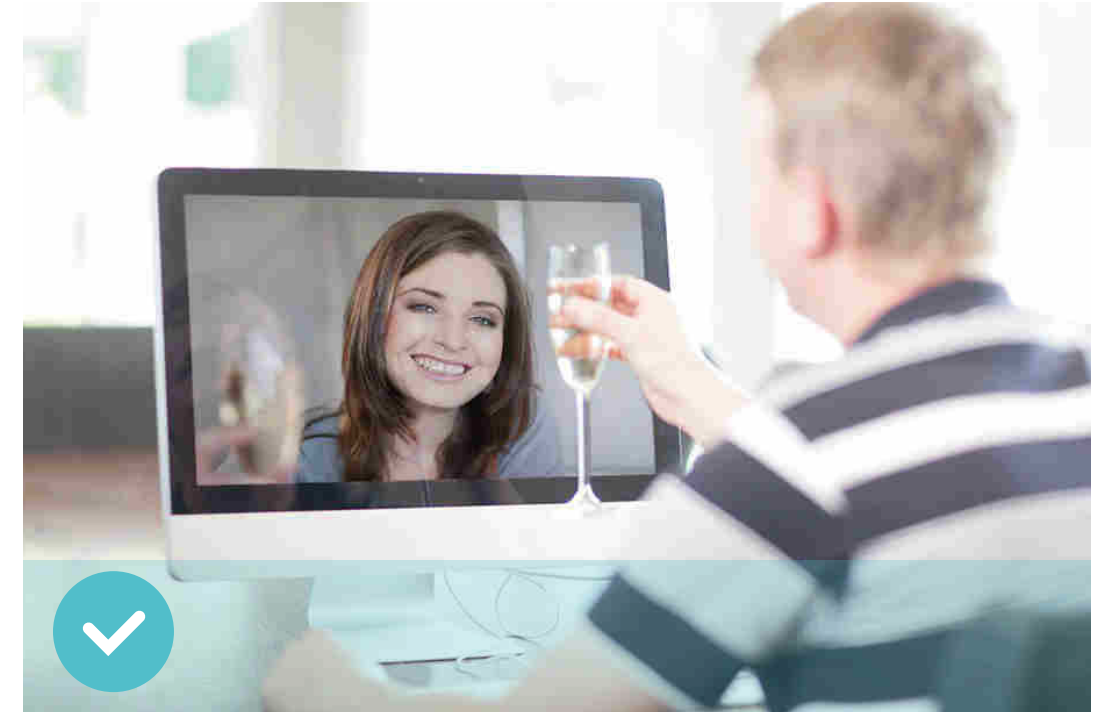
Ease of Use

- Intuitive Web UI- Ensures quick and simple installation without hassle.
- Fast Encryption – One-touch WPA wireless security encryption with the WPS button
- Hassle-free Management with Tether App – Network management is made easy with the TP-Link Tether App, available on any Android or iOS device
- Online Upgrade – Keeps you informed of the latest firmware and allows onling updating on the web UI



Speed

- Ultimate Wireless Speed – Combined wireless speeds of up to 300Mbps (over 2.4GHz) and 433Mbps (over 5GHz)
- Support 802.11 ac – Provides a data transfer rate 3 times faster than 802.11n for each stream
- MIPS 24KEc CPU – A 575/580 MHz MIPS 24K™ CPU core makes multi-tasking easy and boosts data transfer rate



Reliability

- Simultaneous Dual Band – Separate Wi-Fi bands enable more devices to connect to your network without a drop in performance
- Reliable Connection – Three Internal antennas for optimal Wi-Fi coverage and reliable wireless connections

Specifications

Hardware

- Ethernet Port: 1 10/100Mbps RJ45 Port
- Button: WPS Button, Reset Button
- Antenna: 3 Internal Antennas
- Power Consumption: 6.5W
- Dimensions (L × W × H): 110×65.8×75.2mm



Wireless

- Wireless Standards: IEEE 802.11a/n/ac 5GHz, IEEE 802.11b/g/n 2.4GHz
- Frequency: 2.4GHz and 5GHz
- Signal Rate: 300Mbps at 2.4GHz, 433Mbps at 5GHz
- Transmit Power: <20dBm
- Reception Sensitivity:
5GHz:
11a 6Mbps: -94dBm, 11a 54Mbps: -79dBm
11ac HT20 MCS0: -94dBm, 11ac HT20 MCS8: -73dBm
11ac HT40 MCS0: -91dBm, 11ac HT40 MCS9: -67dBm
11ac HT80 MCS0: -88dBm, 11ac HT80 MCS9: -64dBm
2.4GHz:
11g 54Mbps: -81dBm, 11n HT20 MCS7: -79dBm
11n HT40 MCS7: -76dBm
- Wireless Function: Enable/Disable Wireless Radio, Wireless Statistics
- Wireless Security: 64/128-bit WEP, WPA/WPA-PSK2 encryptions

Others

- Certification
CE, FCC, RoHS
- System Requirements
Microsoft Windows 98SE, NT, 2000, XP, Vista™ or Windows 7, 8, 8.1, 10, MAC OS, NetWare, UNIX or Linux
Internet Explorer 11, Firefox 12.0, Chrome 20.0, Safari 4.0, or other Java-enabled browser
- Package Contents
AC750 Wi-Fi Range Extender RE200
Quick Installation Guide



For more information, please visit

<http://www.tp-link.com/en/products/details/RE200.html>

or scan the QR code left

Specifications are subject to change without notice. TP-Link is a registered trademark of TP-Link Technologies CO., Ltd. Other brands and product names are trademarks or registered trademarks of their respective holders.

Maximum extended Wi-Fi coverage specification is based on performance test results. Actual Wi-Fi coverage may vary due to different environment, building material and wireless interferences. Maximum wireless speed of up to 750Mbps is the theoretical data rate derived from IEEE standard 802.11 specifications. Actual data throughput and wireless coverage will vary due to network conditions and environmental factors including volume of network track, building materials and construction, network overhead, actual data throughput rate, and wireless coverage. TP-Link makes no express or implied representations or warranties about this product's compatibility with any future standards. 802.11ac 1300Mbps is approximately 3 times faster than 802.11n 450Mbps. 2.4GHz Performance Mode requires 256 QAM support on Wi-Fi client.

www.tp-link.com

TP-Link AC750 Wi-Fi Range Extender RE200