

Quick Installation Guide

Range Extender

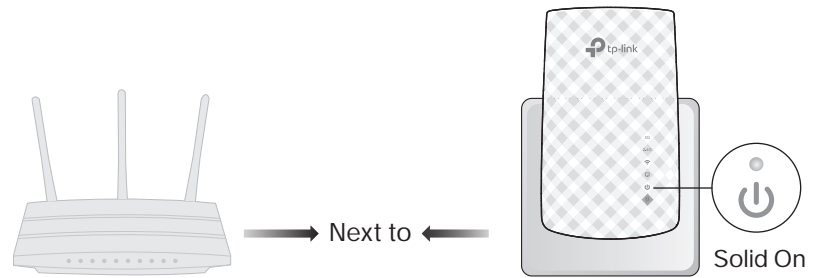
Setup with videos
Scan the QR code, or visit <https://www.tp-link.com/support/setup-video/#range-extenders> and search for the setup video of your model.



*Images may differ from actual product.

1 Power On

Plug the extender into a power outlet next to your router. Wait until its Power LED turns solid on.



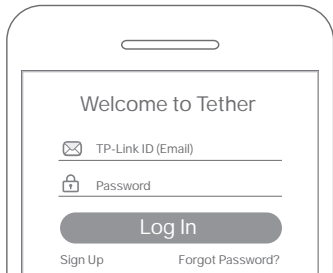
2 Set Up

Via the Tether App

1. Get the up-to-date Tether app from the Apple App Store or Google Play, or simply scan the QR code.

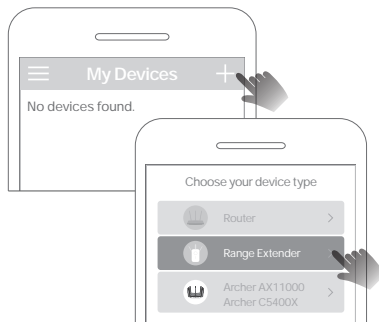


2. Launch the Tether app and log in with your TP-Link ID. If you don't have an account, create one first.



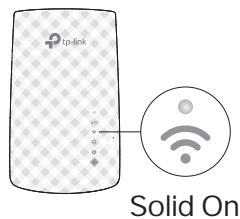
3. Tap the + button and select Range Extender.

Note: If you cannot find your device, please refer to FAQ > Q1.



4. Follow app instructions to complete the setup. The Wi-Fi LED should turn solid on, indicating successful connection to your router.

Note: If the LED does not turn solid on, please refer to FAQ > Q2.



More Setup Methods

Via a Web Browser

1. Connect your computer or smartphone to the extender's network TP-Link_Extender.
2. Visit <http://tplinkrepeater.net> or <http://192.168.0.254> in a web browser. Create a password to log in.
3. Follow web instructions to complete the setup.

Via the WPS Button

1. Press the WPS button on your router.
2. Within 2 minutes, press the WPS button on the extender for 1 second. The Wi-Fi LED should change from blinking to solid on, indicating successful connection.
3. If the extender connects to a dual band router, repeat steps 1 and 2 to connect to the other band.

Extended Network Names:
Router's network name with _EXT at the end or Same as your OneMesh router (See back for OneMesh details)
Passwords:
Same as your router

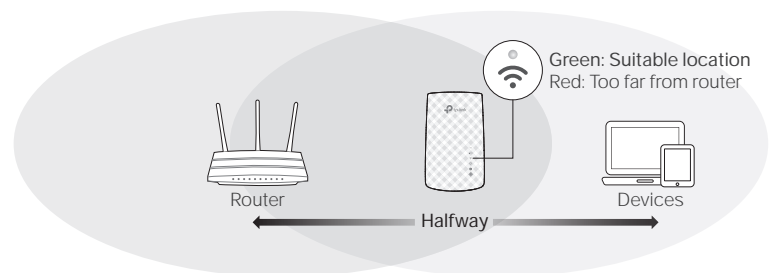
For more details, please refer to the user guide at <https://www.tp-link.com/support/download/>.

3 Relocate

1. Plug in the extender about halfway between your router and the Wi-Fi dead zone. The location you choose must be within the range of your router.

2. Wait for about 2 minutes until the Wi-Fi LED turns solid green. If it doesn't, relocate the extender closer to the router to achieve better signal quality.

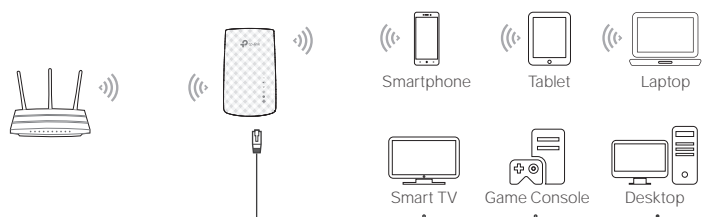
Tip: For more intuitive location assistance, access extender settings via the Tether app and go to Tools > Location Assistant.



Enjoy!

Connect your devices to the extender wirelessly or via an Ethernet cable, then enjoy the internet. The password of your extended network is the same as your host router.

Tip: You can also set up the extender in Access Point mode to transform your existing wired network to a wireless one. For details, refer to the user guide at <https://www.tp-link.com/support>.



Manage the Extender

After setup, you can manage the extender via any of the methods below.

Note: If your extender and router use the same network name, Method 1 is recommended.

Method 1: Via the Tether App

1. Connect your smartphone to the extender's or router's network.
2. Launch the Tether app, select your extender, and log in.
3. Manage the extender as needed.

Method 2: Via a Web Browser

1. Connect your computer or smartphone to the extender's network. If you are using a computer, unplug the Ethernet cable if any.
2. Launch a web browser, enter <http://tplinkrepeater.net> in the address bar, and log in.
3. Manage the extender as needed.

OneMesh™ with Seamless Roaming

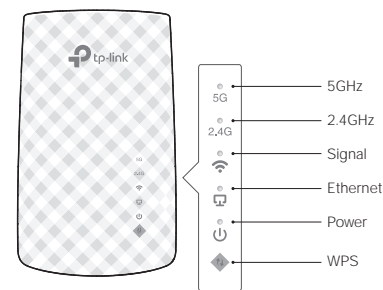
TP-Link OneMesh™ router and extenders work together to form one unified Wi-Fi network. Walk through your home and stay connected with the fastest possible speeds thanks to OneMesh's seamless coverage.

- Unified Wi-Fi Network**
Router and extenders share the same wireless settings, including network name, password, access control settings and more.
- Seamless Roaming**
Devices automatically switch between your router and extenders as you move through your home for the fastest possible speeds.
- Easy Setup and Management**
Set up a OneMesh network with a push of WPS buttons. Manage all network devices on the Tether app or at your router's web management page.

To check full list of TP-Link OneMesh devices, scan the QR code, or visit <https://www.tp-link.com/One-Mesh/compatibility>.



LED Explanation

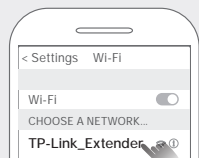


LED	Status	Indication (For Range Extender Mode)
5GHz	On/Off	The extender is connected or not connected to the 5GHz wireless network of your host router.
2.4GHz	On/Off	The extender is connected or not connected to the 2.4GHz wireless network of your host router.
Signal	Solid green	The extender is connected to your router's wireless network and is in a suitable location.
	Solid red	The extender is experiencing poor signal strength. Try relocating it closer to your router.
	Off	No wireless connection is established.
Ethernet	On/Off	The Ethernet port is connected or not connected to a powered-on device.
	On/Off	The extender is on or off.
Power	Blinking	The system is starting up or firmware is being upgraded.
	On	WPS connection is established.
WPS	Blinking	WPS connection is in progress.
	Off	WPS connection has been established for more than 5 minutes or WPS connection failed.

FAQ (Frequently Asked Questions)

Q1. What should I do if the Tether app cannot find my device during setup?

- Try another method by following the steps below:
 1. Connect your smartphone to the extender's network TP-Link_Extender.



2. Launch the Tether app, and select your extender.
Tip: If you have connected to the extender's Wi-Fi but still cannot find your device, try turning off your cellular data.



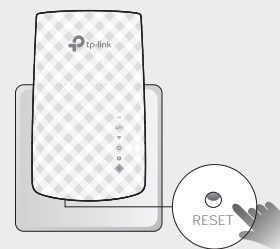
3. Follow app instructions to complete the setup.
If you are still having problems, contact our technical support.

Q2. What should I do if the Signal LED doesn't turn solid on after completing setup via the Tether app or web browser?

- You may have entered incorrect Wi-Fi password for your host router during the configuration. Check the password and try again.
- Make sure the extender is close to your router, preferably within 16 feet, and away from large electrical appliances.
- If you have enabled wireless MAC filtering, wireless access control, or access control list (ACL) on your router, disable them first, then follow any method on the front page to complete the configuration.
- Try setting it up via the WPS button.
- Reset the extender and go through the configuration again.
If you are still having problems, contact our technical support.

Q3. How do I reset the extender?

- With the extender powered on, use a pin to press the RESET button for 1 second. The extender will reboot.



Safety Information

- Keep the device away from water, fire, humidity or hot environments.
- Do not attempt to disassemble, repair, or modify the device. If you need service, please contact us.
- Do not use the device where wireless devices are not allowed.
- The socket-outlet shall be installed near the equipment and shall be easily accessible.

Please read and follow the above safety information when operating the device. We cannot guarantee that no accidents or damage will occur due to improper use of the device. Please use this product with care and operate at your own risk.

TP-Link hereby declares that the device is in compliance with the essential requirements and other relevant provisions of directives 2014/53/EU, 2009/125/EC, 2011/65/EU and (EU)2015/863.

The original EU declaration of conformity may be found at <https://www.tp-link.com/en/ce>.

To communicate with TP-Link users or engineers, please join the TP-Link Community at <https://community.tp-link.com>.

If you have any suggestions or needs for our product guides, you are welcome to email techwriter@tp-link.com.cn.

For technical support, the user guide and other information, please visit <https://www.tp-link.com/support/>, or simply scan the QR code.

