

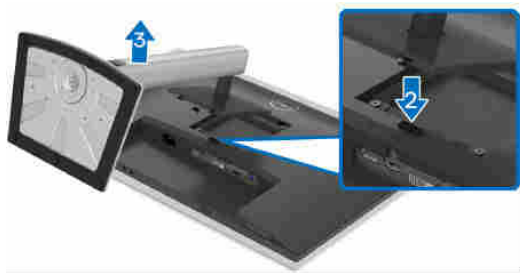
1. Disassembly Procedures

S1 Turn off the monitor.

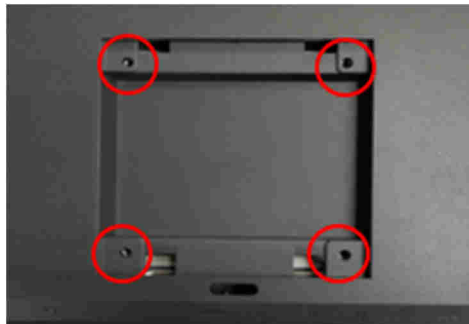
S2 Place the monitor on a soft cloth or cushion.

Press and hold the stand release button.

Lift the stand up and away from the monitor.

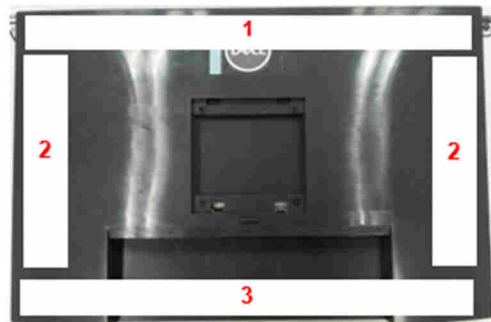


S3 Unlock 4 screws on Rear Cover

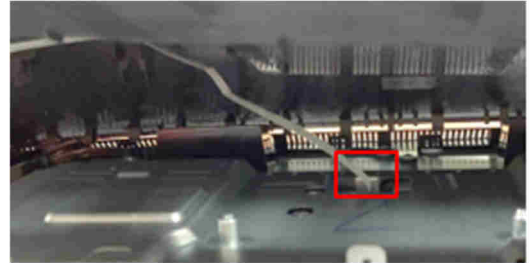


(crew Tor!ue" #\$\$%k&f'

S4 (isassemble Rear Cover from) iddle *rame accordin& to the se! uence shown in the picture



S5 Pull out CTRL + (**C from ,-* + (to take off Rear Cover



S6 Unlock . screws to disassemble CTRL + (from Rear Cover

Tear off CTRL + (**C from Rear Cover and take off CTRL + (from Rear Cover

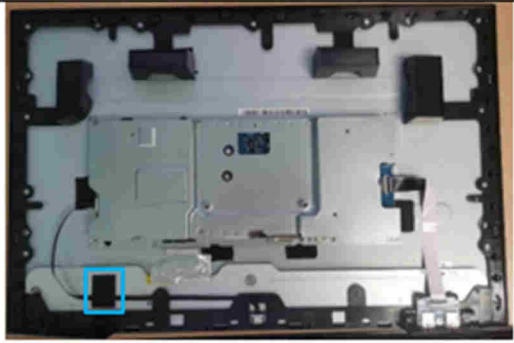


(crew Tor!ue" /\$0.1k&f'

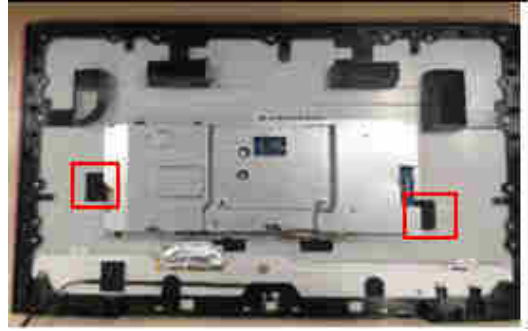
S7 (isassemble CTRL + (**C from CTRL + (



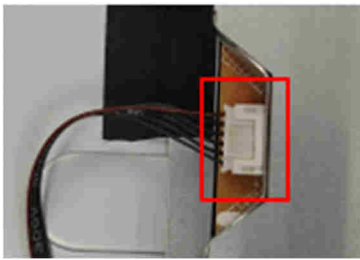
S8 Tear off a tape from +ackli&ht 2 ire



S11 Tear of / tapes from) ain 3 (



S9 Pull out +ackli&ht wire from P + (



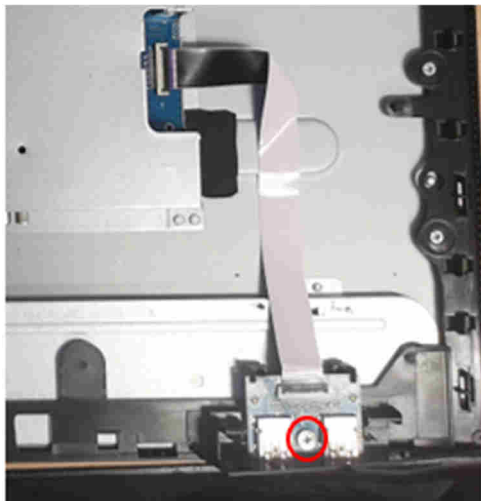
S12 Tear off a aluminum foil from L4 (cable



S1 (isassemble U + **C from U + + (and ,- * + (

Unlock % screw on U + + (

(isassemble U + + (from) iddle *rame



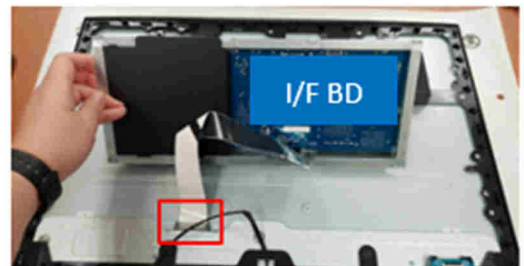
(crew Tor!ue" 4.1\$0.1k&f'

S13 Tear off a yellow tape from L4 (cable



S14 (isassemble L4 (cable from Panel

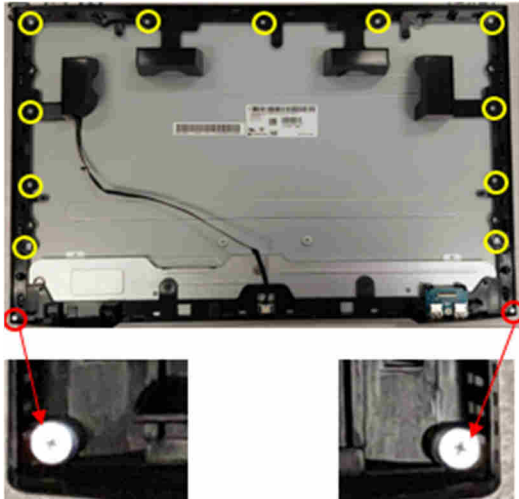
Take off) ain 3 (from Panel



S15 Unlock / screws on 56 7 C3,89
(ee Red mark'

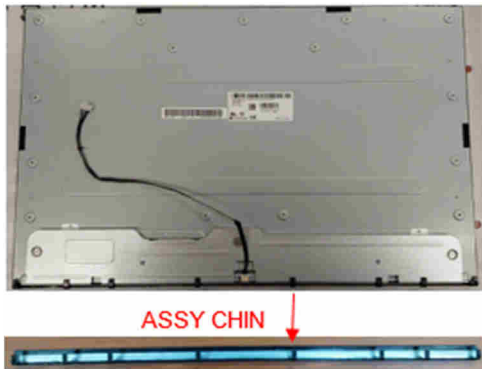
Unlock %% screws on)iddle *rame
(ee 7ellow mark'

(isassemble)iddle *rame from Panel
and 56 7 C3,89



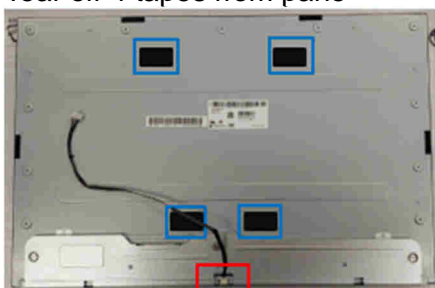
(crew Tor!ue:) * screw" 4.1\$0.1k&'
(crew Tor!ue:96 7 C3,89 screw"
/.0\$0.%k&'

S16 (isassemble 56 7 C3,89 from Panel

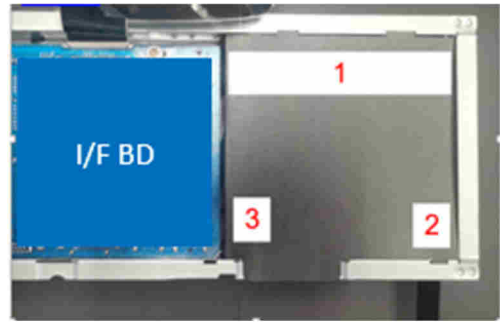


S17 Pull out +ackli&ht 2 ire from panel

Tear off 4 tapes from pane



S18 (isassemble)ylar from)ain 3 (

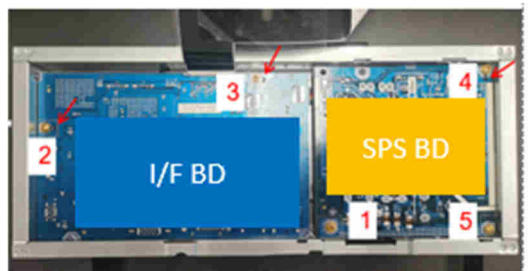


S19 Unlock 4 he ;a&onal screws



(crew Tor!ue" 1.0\$0.<k&'

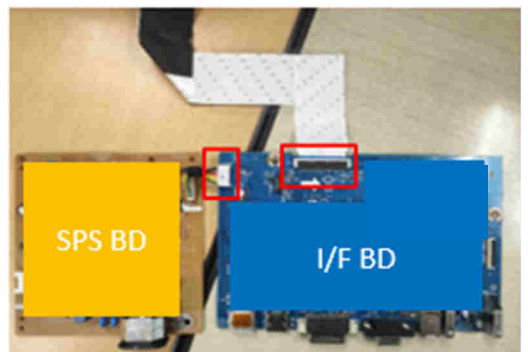
S2 Unlock 1 PC+6 screws



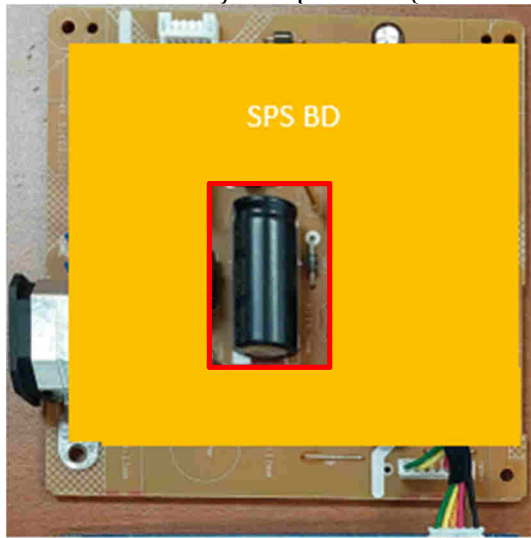
(crew Tor!ue" 1.0\$0.<k&'

S21 (isassemble ,-* +(and P +(from
)ain 3 (

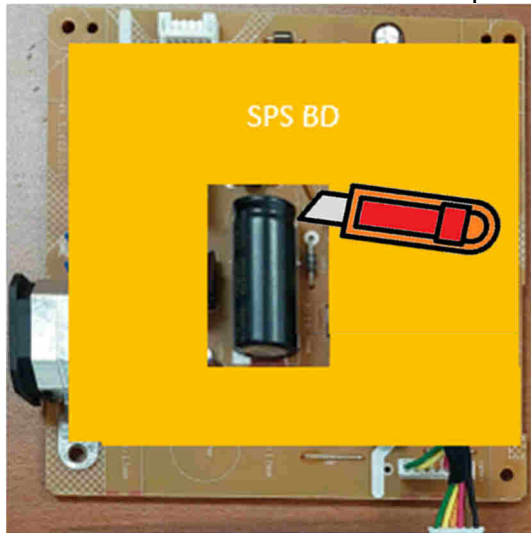
Pull out all wires on PC+6



S22 Remove electrolyte capacitors (red mark' from printed circuit boards



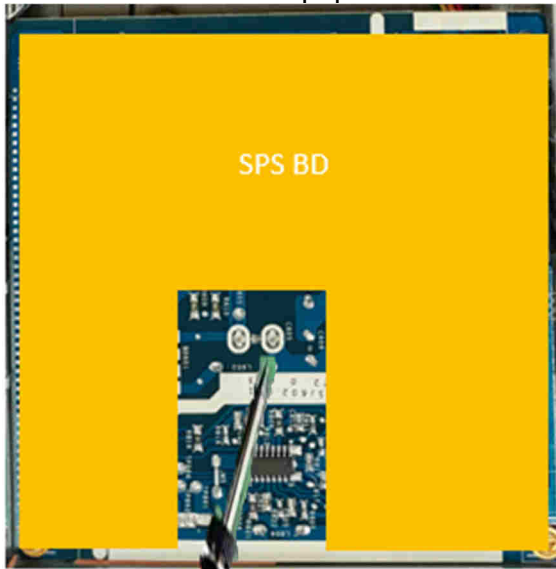
//-% Cut the &lue between bulk cap. and PC+ with a knife



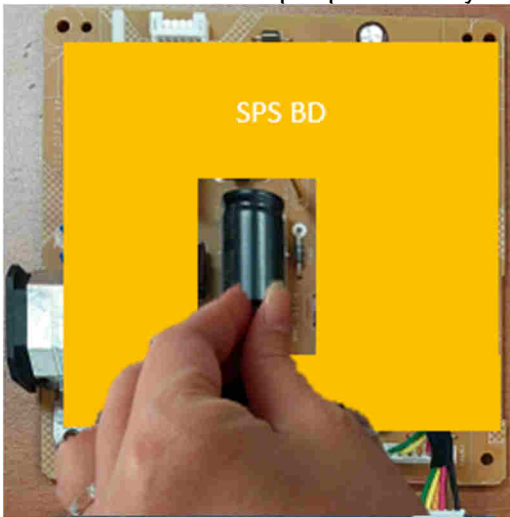
//-/ =nsure cuttin& path within the &lue> don't touch bulk cap. or PC+



//-. Take out bulk cap. pin solder with solderin& iron and absorber



//-4 Lift the bulk cap. up and away from the PC+



2. Product material information

The following substances, preparations, or components should be disposed of or recovered separately from other WEEE in compliance with Article 4 of EU Council Directive 75/442/EEC.

Capacitors / condensers (containing PCB/PCT)	No used
Mercury containing components	No used
Batteries	No used
Printed circuit boards (with a surface greater than 10 square cm)	Product has printed circuit boards (with a surface greater than 10 square cm)
Component contain toner, ink and liquids	No used
Plastic containing BFR	No used
Component and waste contain asbestos	No used
CRT	No used
Component contain CFC, HCFC, HFC and HC	No used
Gas discharge lamps	No used
LCD display > 100 cm ²	Product has an LCD greater than 100 cm ²
External electric cable	Product has external cables
Component contain refractory ceramic fibers	No used
Component contain radio-active substances	No used
Electrolyte capacitors (height > 25mm, diameter > 25mm)	Product has electrolyte capacitors (height >25mm, diameter > 25mm)

3. Tools Required

List the type and size of the tools that would typically can be used to disassemble the product to a point where components and materials requiring selective treatment can be removed.

Tool Description:

- Screwdriver
- Scraper Bar
- Penknife
- Soldering iron and absorber