
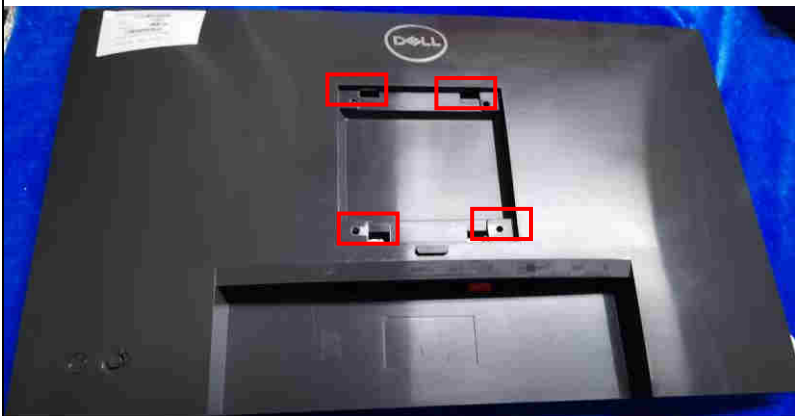
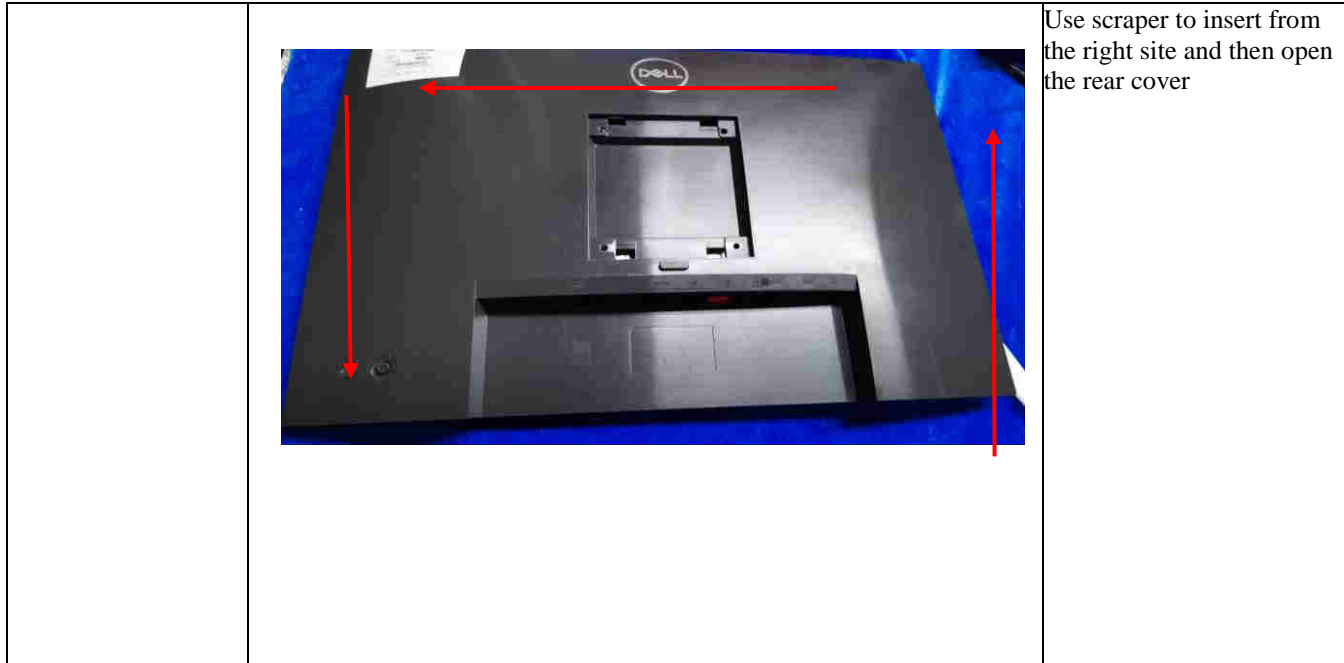


Disassembly Procedures

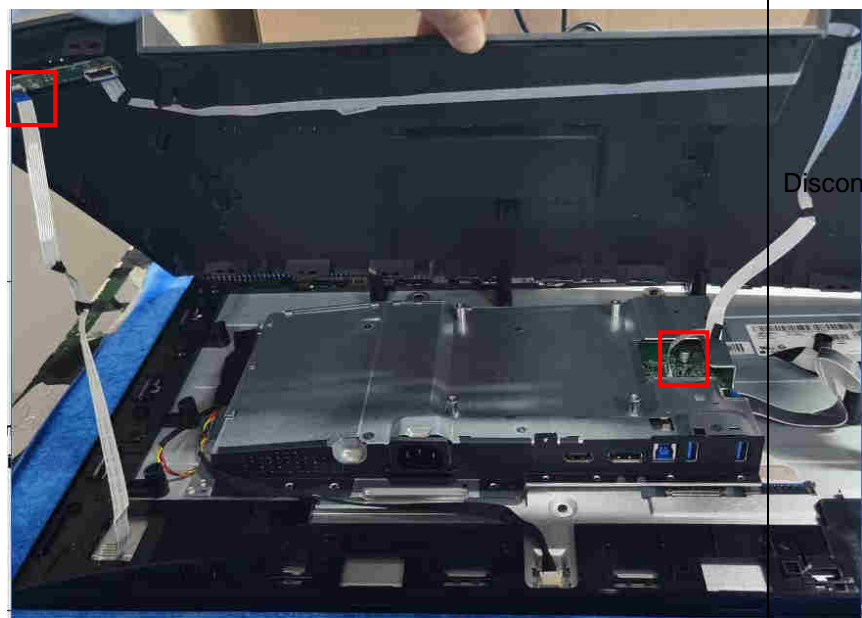
Tools: 2 Power screwdrivers ($\phi=5\text{mm}$, $L=60\text{mm}$); 1 small cross screwdriver; turnbuckle driver;
Setting: Power screwdriver torque $A=6\text{ kgF.Cm}$

| Step | Figure | Remark |
|------------------------------|--|--|
| Remove Stand ass'y |  | Press the button marked red and remove the stand ass'y |
| Remove the rear cover |  | Remove the 4 pcs screws . |



Use scraper to insert from the right side and then open the rear cover

Remove the rear cover

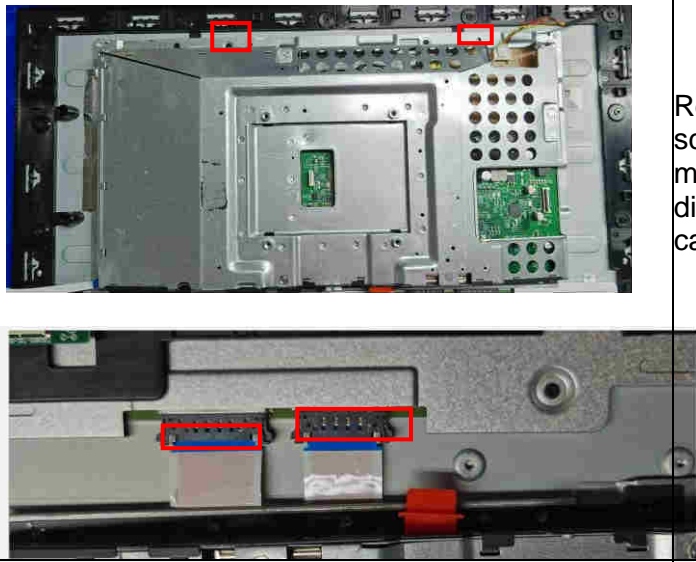
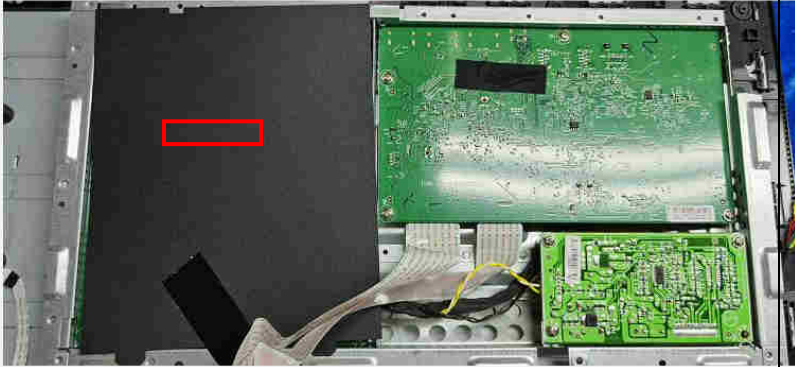
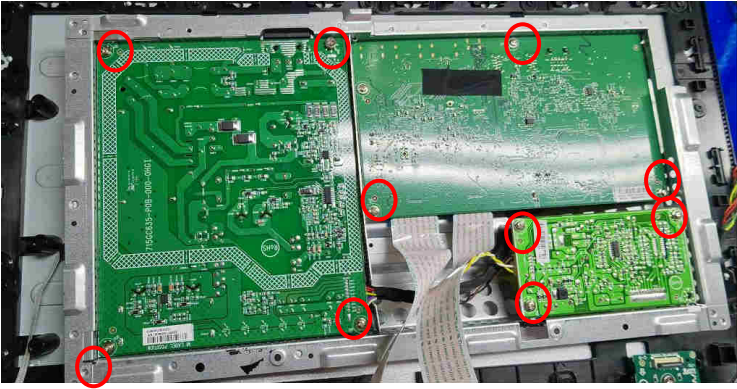


Disconnect the cables

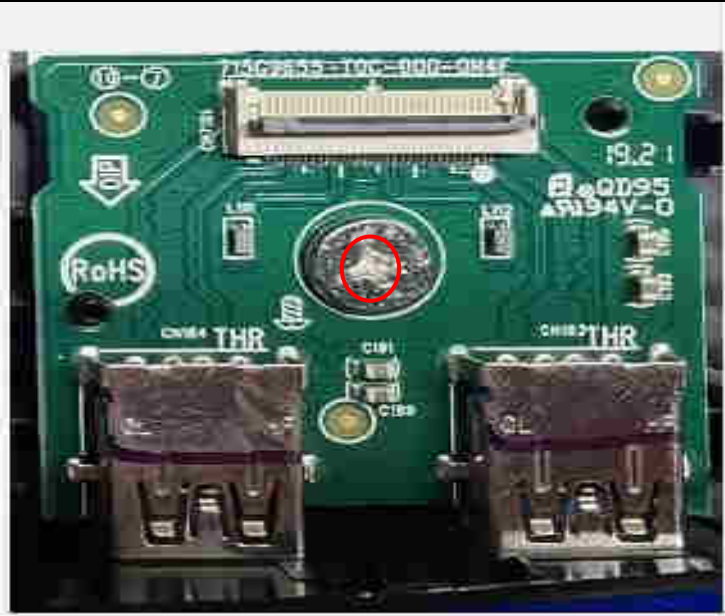
Remove the rear cover



open the cover on the keyboard/ usb board and then pull out the cables

| | | |
|--|--|--|
| <p>Remove the mainframe</p> |  | <p>Remove the two screws on the mainframe and then disconnect the FFC cables</p> |
| <p>Remove the mylar</p> |  | |
| <p>Remove the powerbard and mainboard and converter board</p> |  | <p>Remove the screws on the mainboard and power board</p> |

Remove the usb board



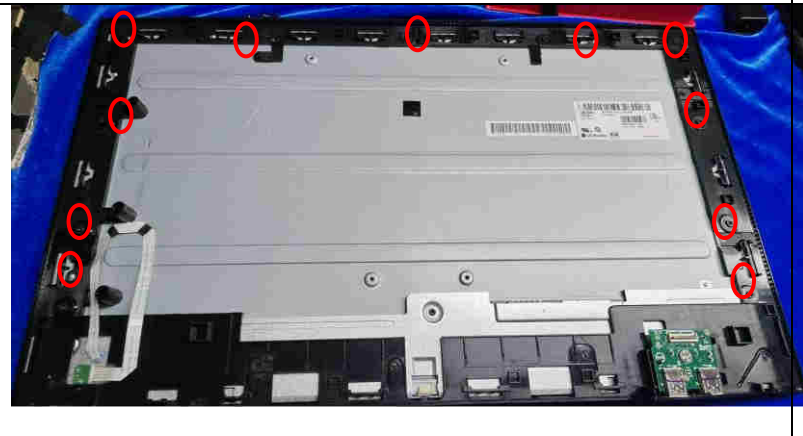
Remove the screw on the usb board

Remove the keyboard



Remove the 3pcs screws on the keyboard

Remove the middle frame



Remove the screws on the middle frame

Mainboard and powerboard and converter board



panel



1.2. Product material information

The following substances, preparations, or components should be disposed of or recovered separately from other WEEE in compliance with Article 4 of EU Council Directive 75/442/EEC.

| | |
|---|---|
| Capacitors / condensers (containing PCB/PCT) | No used |
| Mercury containing components | No used |
| Batteries | No used |
| Printed circuit boards (with a surface greater than 10 square cm) | Product has printed circuit boards (with a surface greater than 10 square cm) |
| Component contain toner, ink and liquids | No used |
| Plastic containing BFR | No used |
| Component and waste contain asbestos | No used |
| CRT | No used |
| Component contain CFC, HCFC, HFC and HC | No used |
| Gas discharge lamps | No used |
| LCD display > 100 cm ² | Product has an LCD greater than 100 cm ² |
| External electric cable | Product has external cables |
| Component contain refractory ceramic fibers | No used |
| Component contain radio-active substances | No used |
| Electrolyte capacitors (height > 25mm, diameter > 25mm) | Product has electrolyte capacitors (height > 25mm, diameter > 25mm) |

1.3. Tools Required

List the type and size of the tools that would typically can be used to disassemble the product to a point where components and materials requiring selective treatment can be removed.

Tool Description:

- **Screwdriver (Phillip-head, Hexagonal head)**
- Penknife
- Soldering iron and absorber