

Yealink

Wired Headset

UH36 Mono & UH36 Dual



English | 简体中文

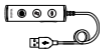
Quick Start Guide (V1.0)
快速入门指南

Package Contents

1 USB Wired Headset UH36 Mono



UH36 Mono Headset



YHC20



Drawstring Bag

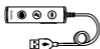


Quick Start Guide

2 USB Wired Headset UH36 Dual



UH36 Dual Headset



YHC20



Drawstring Bag

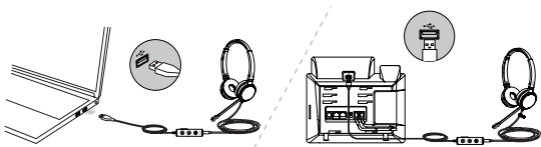


Quick Start Guide

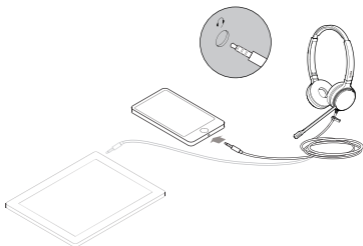
Note: We recommend that you use the included accessories, and other accessories may have compatibility issues that prevent them from working properly.

UH36 Connection

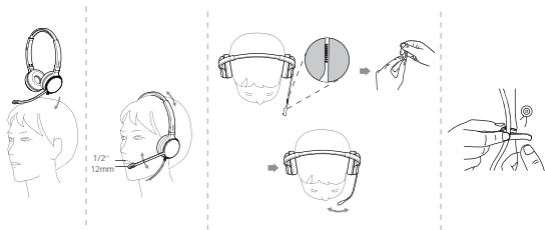
- Connect to PC/Yealink IP phone (with YHC20)



- Connect to the smartphone or tablet (without YHC20)



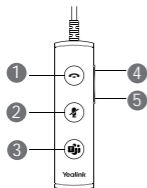
Headset Wear and Adjustment



Earmuff Replacement



Headset Wear and Adjustment



- 1 Answer/End Button**
Press to answer, reject, or end a call.
- 2 Mute Button**
Press to mute or unmute microphone.
- 3 Teams Button/Voice Assistant**
 - Press to invoke the Teams client.
 - Press and hold for 2 seconds to activate Cortana.
- 4 Volume Up**
Press to increase the volume.
- 5 Volume Down**
Press to decrease the volume.

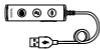
Note: Before using the Teams button functions, you should install the Microsoft Teams client on your PC, smartphone or tablet.

包装清单

① 单耳有线耳麦 UH36



UH36 单耳耳麦



YHC20



束口袋

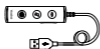


快速入门指南

② 双耳有线耳麦 UH36



UH36 双耳耳麦



YHC20



束口袋

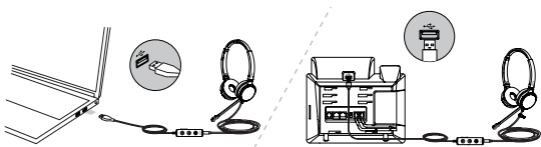


快速入门指南

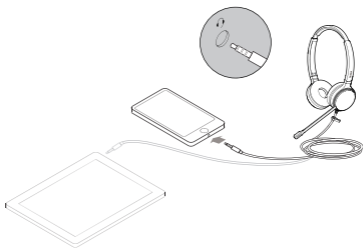
说明：我们推荐使用自带的配件，使用其它配件可能存在兼容问题导致无法正常使用。

连接 UH36

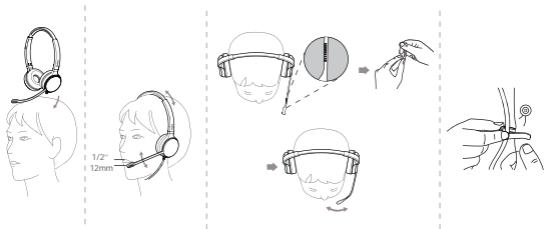
- 连接到 PC/ 亿联 IP 话机 (通过 YHC20)



- 连接到手机或平板 (不通过 YHC20)



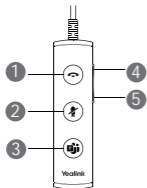
耳麦佩戴和调节



耳套替换



YHC20 按键介绍



1 接听 / 挂断键

接听 / 拒接来电，或挂断电话。

2 静音键

麦克风静音或取消静音。

3 Teams 键 / 语言助手

- 按下按键调出 Teams 客户端。
- 长按按键 2 秒激活 Cortana。

4 音量调高键

提高音量。

5 音量调低键

降低音量。

说明: 在使用 Teams 按键功能之前, 需要先在 PC / 手机 / 平板上安装 Microsoft Teams 客户端。

Regulatory Notices

Operating Ambient Temperatures

- Operating temperature: +14 to 122°F (-10 to 50°C)
- Relative humidity: 5% to 90%, noncondensing
- Storage temperature: -22 to +160°F (-30 to +70°C)

Warranty

Our product warranty is limited only to the unit itself, when used normally in accordance with the operating instructions and the system environment. We are not liable for damage or loss resulting from the use of this product, or for any claim from a third party. We are not liable for problems with Yealink device arising from the use of this product; we are not liable for financial damages, lost profits, claims from third parties, etc., arising from the use of this product.

Explanation of the symbols

● DC symbol

— is the DC voltage symbol.

● WEEE Warning symbol

To avoid the potential effects on the environment and human health as a result of the presence of hazardous substances in electrical and electronic equipment, end users of electrical and electronic equipment should understand the meaning of the crossed-out wheeled bin symbol. Do not dispose of WEEE as unsorted municipal waste and have to collect such WEEE separately.

Restriction of Hazardous Substances Directive (RoHS)

All adapter devices comply with the requirements of the EU RoHS Directive.

Statements of compliance can be obtained by contacting support@yealink.com.

Safety Instructions

Save these instructions. Read these safety instructions before use!

⚠ General Requirements

- Before you install and use the device, read the safety instructions carefully and observe the situation during operation.
- During the process of storage, transportation, and operation, please always keep the device dry and clean, avoid collision and crash.
- Please attempt not to dismantle the device by yourself. In case of any discrepancy, please contact the appointed maintenance center for repair.
- Please refer to the relevant laws and statutes while using the device. Legal rights of others should be respected as well.

⚠ Environmental Requirements

- Place the device at a well-ventilated place. Do not expose the device under direct sunlight.
- Keep the device dry and free of dusts.
- Do not place the device on or near any inflammable or fire-vulnerable object, such as rubber-mats materials.
- Keep the device away from any heat source or bare fire, such as a candle or an electric heater.

⚠ Operating Requirements

- Do not let a child operate the device without guidance.
- Do not let a child play with the device or any accessory in case of accidental swallowing.
- Please use the accessories provided or authorized by the manufacturer only.
- Do not spill liquid of any kind on the product or use the equipment near water, for example, near a bathtub, washbowl, kitchen sink, wet basement or near a swimming pool.

- When there is smoke emitted from the device, or some abnormal noise or smell, disconnect the device immediately.
- Contact the specified maintenance center for repair.
- Do not insert any object into equipment slots that is not part of the product or auxiliary product.

⚠ Cleaning Requirements

- Use a piece of soft, dry and anti-static cloth to clean the device.

Troubleshooting

The usage environment is out of operating temperature range.

1. Use in the operating temperature range.

The cable between the unit and the Yealink device is connected incorrectly.

1. Connect the cable correctly.

Some dust, etc., may be in the port.

1. Clean the port.

Contact your dealer or authorized service facility for any further questions.

FCC Statement

This device complies with part 15 of the FCC Rules. Operation is subject to the following

two conditions: (1) this device may not cause harmful interference, and (2) this device must accept any interference received, including interference that may cause undesired operation.

Any Changes or modifications not expressly approved by the party responsible for compliance could void the user's authority to operate the equipment.

IC Statement

This device complies with Industry Canada's licence-exempt RSSs. Operation is subject to the following two conditions:

(1) this device may not cause interference; and

(2) this device must accept any interference, including interference that may cause undesired operation of the device. CAN ICES-3(B)

Le présent appareil est conforme aux CNR d'Industrie Canada applicables aux appareils radio exempts de licence. L'exploitation est autorisée aux deux conditions suivantes:

(1) l'appareil ne doit pas produire de brouillage;

(2) l'utilisateur de l'appareil doit accepter tout brouillage radioélectrique subi, même si le brouillage est susceptible d'en compromettre le fonctionnement. NMB-3(B)

Contact Information

YEALINK NETWORK TECHNOLOGY CO.,LTD.

309, 3rd Floor, No.16, Yun Ding North Road, Huli District, Xiamen City, Fujian, P.R.C

YEALINK (EUROPE) NETWORK TECHNOLOGY B.V.

Strawinskylaan 3127, Atrium Building, 8th floor, 10772X Amsterdam, The Netherlands

YEALINK (USA) NETWORK TECHNOLOGY CO., LTD.

999 Peachtree Street Suite 2300, Fulton, Atlanta, GA, 30309, USA

Made in China

About Yealink

Yealink is a global leading provider of enterprise communication and collaboration solutions, offering video conferencing service to worldwide enterprises. Focusing on research and development, Yealink also insists on innovation and creation. With the outstanding technical patents of cloud computing, audio, video and image processing technology, Yealink has built up a panoramic collaboration solution of audio and video conferencing by merging its cloud services with a series of endpoints products. As one of the best providers in more than 140 countries and regions including the US, the UK and Australia, Yealink ranks No.1 in the global market share of SIP phones shipments.

Technical Support

Visit Yealink Wiki (<http://support.yealink.com/>) for the latest firmware, guides, FAQ, Product documents, and more. For better service, we sincerely recommend you to use Yealink Ticketing system (<https://ticket.yealink.com>) to submit all your technical issues.

Certified for

Microsoft Teams



U H 3 6-EN+CN

Web: www.yealink.com

Copyright©2019 YEALINK(XIAMEN) NETWORK TECHNOLOGY CO.,LTD.All rights reserved.