



# **Voyager™ 1350g**

---

**Corded Area-Imaging Scanner**

## **Quick Start Guide**

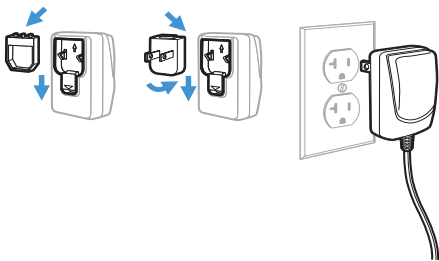
## Agency Model: 1350g

**Note:** Refer to your User Guide for information about cleaning your device.

## Get Started

Turn off the computer's power before connecting the scanner, then power up the computer once the scanner is fully connected.

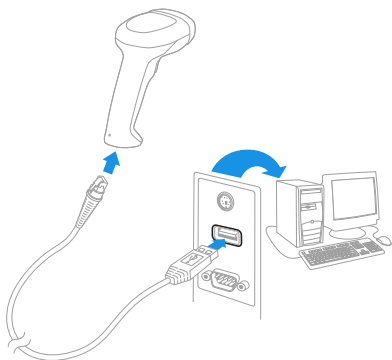
## Power Supply Assembly (if included)



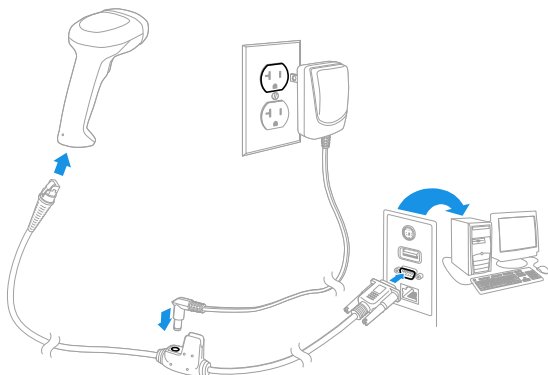
**Note:** The power supply must be ordered separately, if needed.

## Connect the Scanner

USB:



## RS232 Serial Port:



## Interface Type

The 1350g supports four interface types: USB keyboard, USB HID, USB serial, and RS232. To change interface type, scan the corresponding barcode below:



PAP124.  
USB Keyboard



PAP131.  
USB HID



TERMID130.  
USB Serial



PAP232.  
RS232

## Reading Techniques

The view finder projects an aiming dot that should be centered over the barcode, but it can be positioned in any direction for a good read.



Hold the scanner over the barcode, press the button, and center the aiming dot on the barcode.

The aiming dot is smaller when the scanner is closer to the code and larger when it is farther from the code. Hold the scanner close to smaller bar codes, and farther away from large bar codes to get a proper read.

If the barcode is highly reflective (e.g., laminated), you may need to tilt the scanner at an angle so the barcode can be scanned.

## Standard Product Defaults

The following barcode resets all standard product default settings.



DEFAULT.  
Standard Product Defaults

## Keyboard Country

Scan the appropriate country code below to program the keyboard layout for your country or language. By default, national character replacements are used for the following characters: # \$ @ [ \ ] ^ ' { } ~

Refer to the ISO 646 Character Replacements chart in your User Guide to view the character replacements for each country.



KBDCTY0.  
USA (Default)



KBDCTY1.  
Belgium



KBDCTY8.  
Denmark



KBDCTY2.  
Finland



KBDCTY3.  
France



KBDCTY4.  
Germany/Austria



KBDCTY7.  
Great Britain



KBDCTY5.

Italy



KBDCTY9.

Norway



KBDCTY10.

Spain



KBDCTY6.

Switzerland

**Note:** For a complete list of country codes, see the User Guide for your product.

## Trigger

The following bar codes will allow you to use the scanner in **Manual Trigger - Normal Mode** (need to press the trigger to read) or **Presentation mode** (the scanner is activated when it “sees” a barcode).



PAPHHF.

Manual Trigger - Normal  
(Default)



TRGMOD3.

Presentation Mode

## Suffix

If you want a carriage return after the barcode, scan the **Add CR Suffix** barcode. To add a tab after the barcode, scan the **Add Tab Suffix** barcode. Otherwise, scan the **Remove Suffix** barcode to remove the suffixes.



VSUFCR.  
Add CR Suffix



SUFBK29909.  
Add Tab Suffix



SUFCA2.  
Remove Suffix

## Add Code ID Prefix to all Symbologies

Scan the following barcode if you wish to add a Code ID prefix to all symbologies at once.



PRECA2,BK2995C80!  
Add Code ID Prefix To All Symbologies  
(Temporary)

*Note: For a complete list of Code IDs, see the User Guide for your product.*



## Function Code Transmit

When this selection is enabled and function codes are contained within the scanned data, the scanner transmits the function code to the terminal. Charts of these function codes are provided in your User Guide. When the scanner is in keyboard wedge mode, the scan code is converted to a key code before it is transmitted.



RMVFNC0.  
Enable  
(Default)



RMVFNC1.  
Disable

## In-Stand Sensor Mode

This feature senses when the scanner is removed from the stand and tells it to begin manual triggering. When Sensor On is enabled, the scanner defaults to Presentation Mode when it is in the stand, and to Manual Trigger Mode when it is removed from the stand.



TRGSSW1.  
Sensor On  
(Default)



TRGSSW0.  
Sensor Off

## Data Format Editor Instructions

The following are abbreviated instructions for entering a data format. For complete instructions refer to your User's Guide.

- Step 1. Scan the **Enter Data Format** symbol.
- Step 2. Primary/Alternate Format: scan **0** for Primary Format
- Step 3. Terminal Type: scan **099** for any terminal type
- Step 4. Code I.D.: scan **99** for any bar code type
- Step 5. Length: scan **9999** for any length bar code.
- Step 6. Editor commands: use the Programming Chart that follows.
- Step 7. Scan **Save** to save your entries.



DFMBK3.

Enter Data Format



DFMCA3.

Clear All Data Formats



MNUSAV.

Save

# Programming Chart



K0K  
0



K2K  
2



K4K  
4



K6K  
6



K1K  
1



K3K  
3



K5K  
5



K7K  
7



KBK  
8



KAK  
A



KCK  
C



KEK  
E



MNUSAV.  
Save



K9K  
9



KBK  
B



KDK  
D



KFK  
F



MNUABT.  
Discard



RESET.  
Reset

## EZConfig-Scanning

To access additional features for the scanner, use EZConfig-Scanning, an online configuration software tool, available from [hsmftp.honeywell.com](http://hsmftp.honeywell.com).

## Support

To search our knowledge base for a solution or to log into the Technical Support portal and report a problem, go to [www.honeywellaidc.com/working-with-us/contact-technical-support](http://www.honeywellaidc.com/working-with-us/contact-technical-support).

## Product Documentation

Product documentation is available at [www.honeywellaidc.com](http://www.honeywellaidc.com).

## Limited Warranty

For warranty information, go to [www.honeywellaidc.com](http://www.honeywellaidc.com) and click **Resources** > **Product Warranty**.

## Patents

For patent information, see [www.hsmpats.com](http://www.hsmpats.com).

## Disclaimer

Honeywell International Inc. (“HII”) reserves the right to make changes in specifications and other information contained in this document without prior notice, and the reader should in all cases consult HII to determine whether any such changes have been made. The information in this publication does not represent a commitment on the part of HII.

HII shall not be liable for technical or editorial errors or omissions contained herein; nor for incidental or consequential damages resulting from the furnishing, performance, or use of this material. HII disclaims all responsibility for the selection and use of software and/or hardware to achieve intended results.

This document contains proprietary information that is protected by copyright. All rights are reserved. No part of this document may be photocopied, reproduced, or translated into another language without the prior written consent of HII.

Copyright ©2021 Honeywell International Inc. All rights reserved.