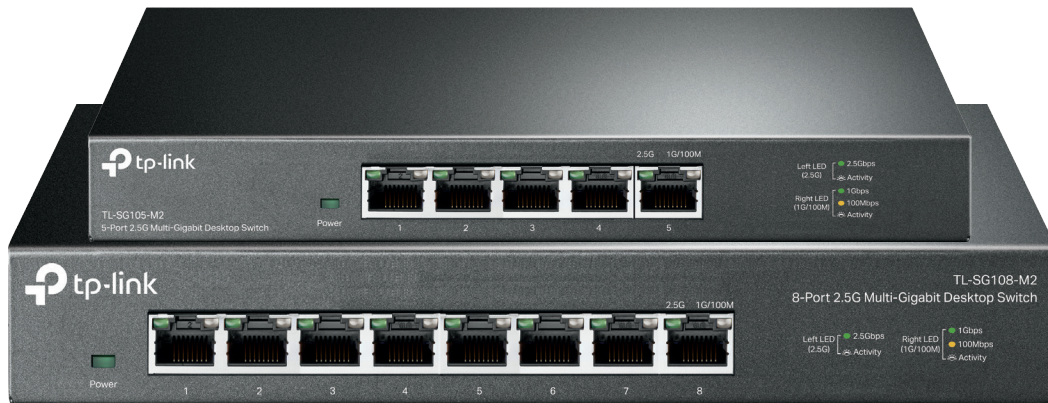




tp-link

# 2.5G Multi-Gigabit Unmanaged Switch

MODELS: TL-SG108-M2/TL-SG105-M2



## Overview

With the development of new Wi-Fi 6 technologies and the upgrade of electronic devices such as household storage devices and PCs, front-end wired devices require more bandwidth and better network performance.

2.5G Multi-Gigabit Switch TL-SG105-M2 and TL-SG108-M2 are newly launched 2.5G unmanaged switches by TP-Link, both of which achieve 2.5GbE connectivity and provide affordable 2.5G network upgrade plans for customers based on the current Cat5e network.

The 2.5G ports support automatic negotiation to 100M/1G/2.5G according to the type of connected device and provide sufficient bandwidth to unlock the highest performance of 2.5G/Multi-Gigabit devices, including 2.5G NAS, a personal workstation, 8K video stream, and 2.5G Wi-Fi 6 AP.

## Highlight

### Super-Fast Connections

Provides super-fast connections to 2.5G NAS, Server, 2.5G PCIe Adapter/ NIC, gaming computer, 2.5G WiFi 6 AP, 4K video, and more.

### Optimal 3-Speed Connections

Auto-negotiation for 100Mbps/1G/2.5G connections provide optimal performance.

### Hassle-Free Cabling

Instantly upgrade to 2.5Gbps without the need to upgrade to Cat6 wiring, reducing wiring costs and hassle.

### Ideal for Various Scenarios

Built for super-fast connections in LAN parties, home entertainment, home and business offices, and instant transfer for the workstation.

### Silent Operation

Industry-leading fanless design ensures silent operation, ideal for any home and business.

### Plug and Play



Allows for easy deployment without the need for a technician.

### Metal Casing

Durable metal casing and desktop/wall mounting design are well-suit for different environments.

# Specifications

## Hardware Features & Performance

Product Picture			
Model		TL-SG105-M2	TL-SG108-M2
General	Interface	5 * 100Mbps/1G/2.5G Auto-Negotiation, Auto MDI/MDI-X	8 * 100Mbps/1G/2.5G Auto-Negotiation, Auto MDI/MDI-X
Performance	Switching Capacity	25 Gbps	40 Gbps
	Packet Forwarding Rate	18.6 Mpps	29.8 Mpps
	MAC Address Table	16K	
	Packet Buffer	1.5 Mbit	
	Transfer Method	Store and Forward	
	Jumbo Frame	10K	
	Advance Features	802.3x flow control 802.1p/DSCP QoS	
Physical & Environmet	Power Supply	12 V/1 A Adapter	12 V/1.5 A Adapter
	Max Power Consumption	12.11 W	15.65 W
	Max Heat Dissipation	41.32 BTU/hr	53.40 BTU/hr
	Dimensions (W x D x H)	209×126×26 mm	226 * 131* 35mm
	Fan Quantity	Fanless	
	Installation	Desktop/Wall Mounting	
	Operating Temperature	0 °C to 40 °C (32 °F to 104 °F)	
	Storage Temperature	-40 °C to 70 °C (-40 °F to 158 °F)	
	Operation Humidity	10% to 90% RH, non-condensing	
	Storage Humidity	5% to 90% RH, non-condensing	
	Certification	CE, FCC, RoHS	

Specifications are subject to change without notice. All the brands and product names are trademarks or registered trademarks of their respective holders. © 2020 TP-Link