

EPOS

Connecting the BT-D 800 USB | BT-D 800 USB anschließen | Connexion au BT-D 800 USB | Connessione di BT-D 800 USB | Conectar el BT-D 800 USB | Ligue o BT-D 800 USB | Aansluiting van de BT-D 800 USB |
 BT-D 800 USB | Sădan forbindes BT-D 800 USB | Ansluta BT-D 800 USB | BT-D 800 USB:n liittämien | Podł czenie BT-D 800 USB | BT-D 800 USB | 连接 BT-D 800 USB | 连接 BT-D 800 USB |
 BT-D 800 USB'nin ba lanması | BT-D 800 USB の接続 | Menghubungkan USB BT-D 800 | BT-D 800 USB 연결하기

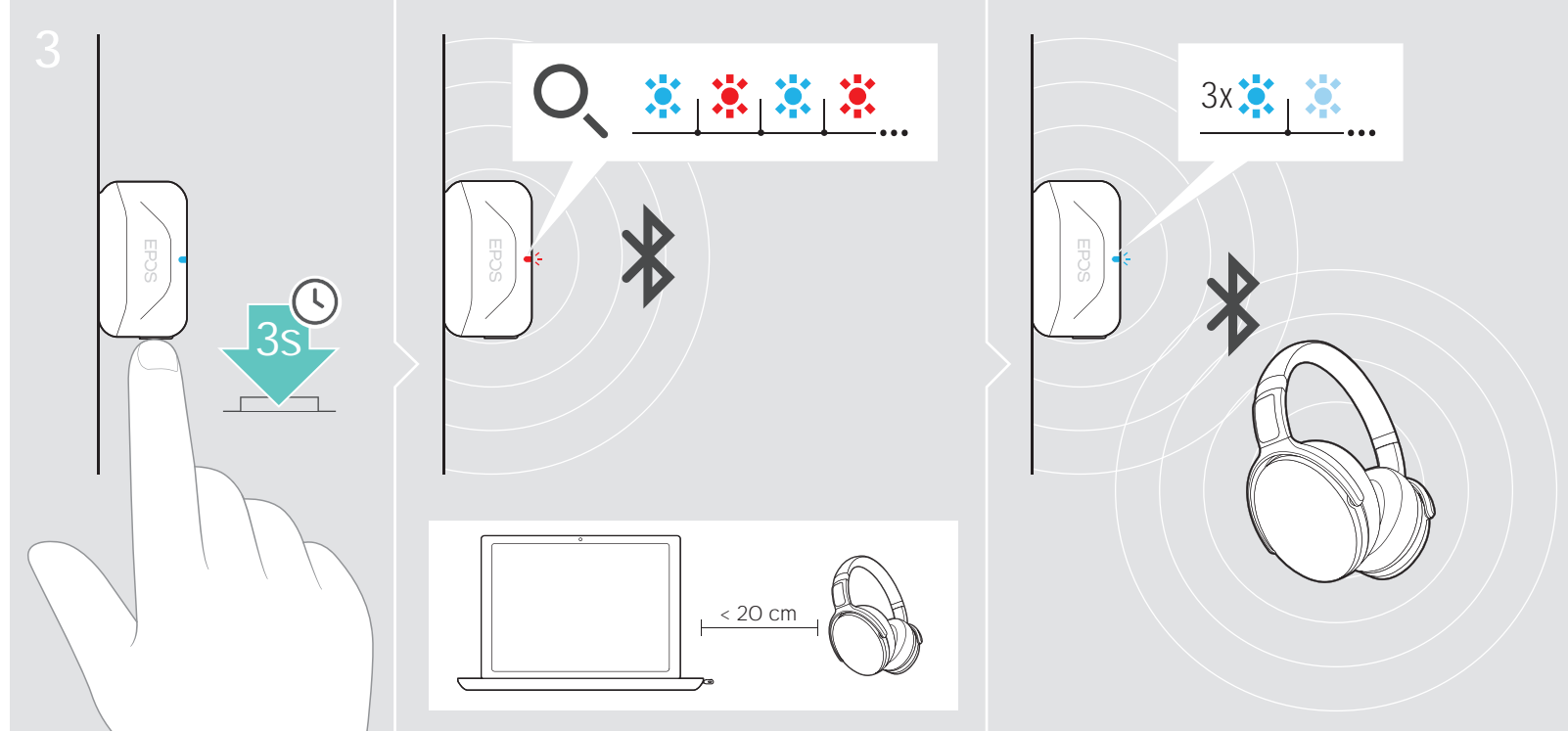
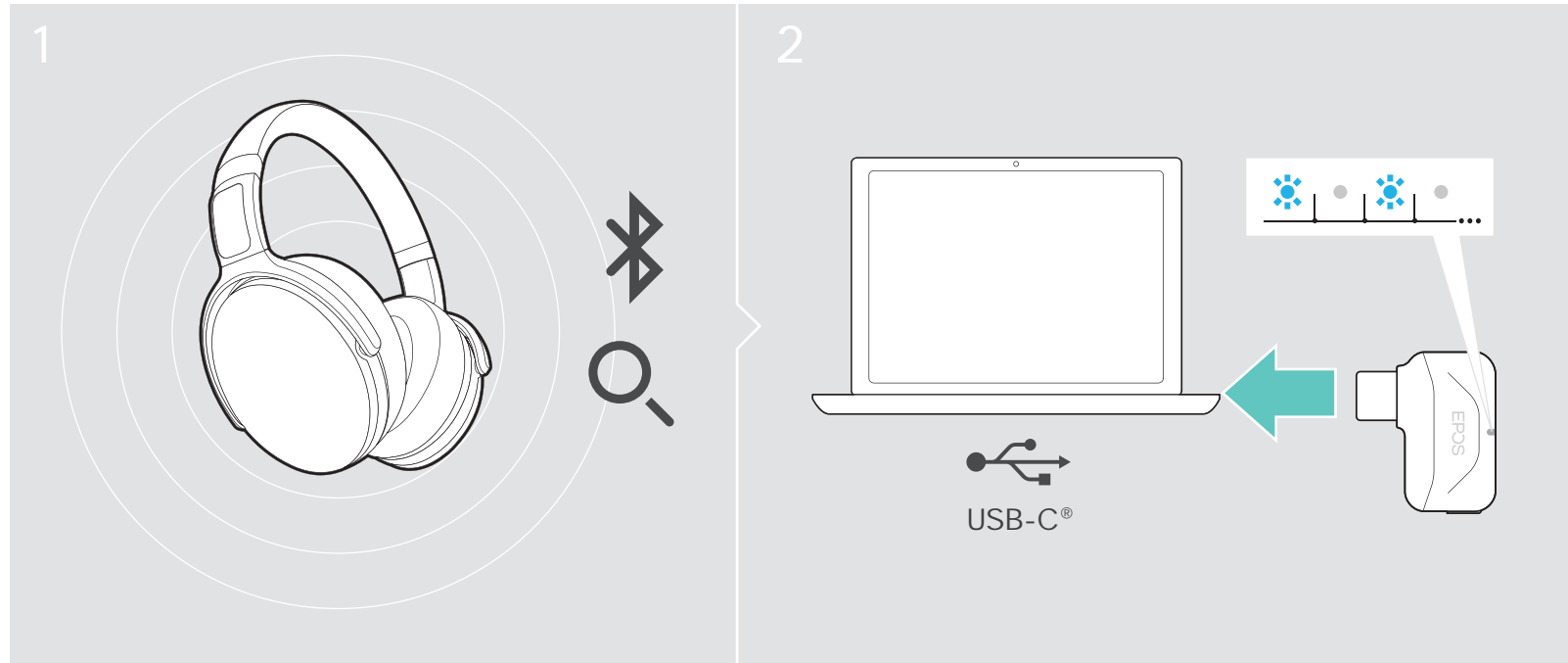
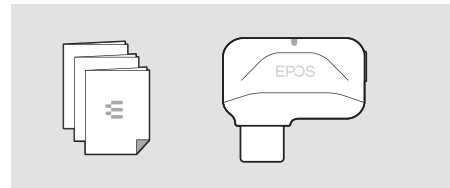
BT-D 800 USB-C

Bluetooth® dongle

EN Quick Guide	EL	RU
DE Kurzanleitung		
FR Guide express	DA Kvikvejledning	ZH 快速入门指南
IT Guida rapida	SV Snabbguide	TW 快速指南
ES Guía rápida	FI Pikaopas	TR Hızlı Kılavuz
PT Guia Rápido	PL Skrócona instrukcja obsługi	JA クイックガイド
NL Mini handleiding		ID Panduan Cepat
		KO 빠른 가이드

Model: SCBT16

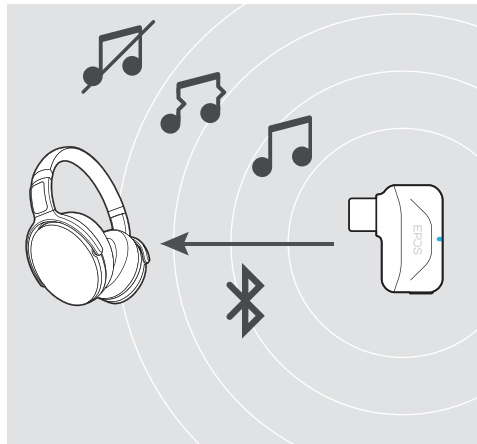
Package contents | Lieferumfang | Contenu de la boîte |
 Contenuti della confezione | Contenido del embalaje |
 Conteúdo da embalagem | Inhoud verpakking |
 Pakkens inhoud |
 Innehåll i förpackningen | Pakkauksen sisältö |
 Zawarto opakowania |
 套装内容 | 包装内容 | Kutunun içeri i | パッケージ内容 |
 Isi kemasan | 패키지 내용



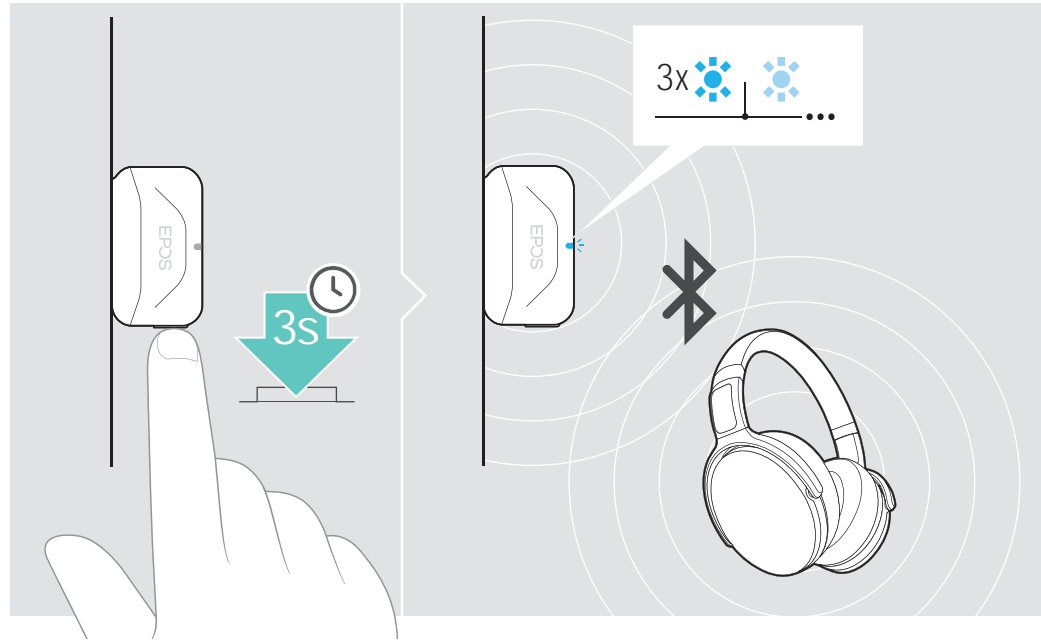
Sennheiser Communications A/S
 Industriparken 27, DK-2750 Ballerup, Denmark
 www.eposaudio.com

Leaving the Bluetooth transmission range | Bluetooth-Reichweite verlassen | Quitter la portée de transmission Bluetooth | Uscita dalla portata di trasmissione Bluetooth | Salir del área de transmisión Bluetooth | Abandonar o alcance de transmisión Bluetooth | Het Bluetooth-transmissiebereik verlaten | Bluetooth | Bluetooth rækkevidden forlades | Lämna räckvidden för Bluetooth | Poistuminen Bluetooth-lähetysken alueelta | Opuszczanie zasięgu transmisji Bluetooth | Bluetooth | 留有蓝牙传输范围 | 離開藍牙傳輸範圍 | Bluetooth iletiim aralığından ayrılma | Bluetooth 伝送範囲から離れる | Keluar dari jangkauan transmisi Bluetooth | 블루투스 전송 범위를 벗어남

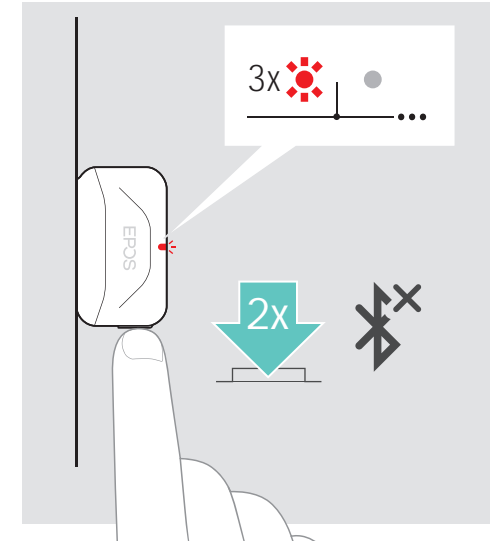
Bluetooth | Bluetooth rækkevidden forlades | Lämna räckvidden för Bluetooth | Poistuminen Bluetooth-lähetysken alueelta | Opuszczanie zasięgu transmisji Bluetooth | Bluetooth | 留有蓝牙传输范围 | 離開藍牙傳輸範圍 | Bluetooth iletiim aralığından ayrılma | Bluetooth 伝送範囲から離れる | Keluar dari jangkauan transmisi Bluetooth | 블루투스 전송 범위를 벗어남



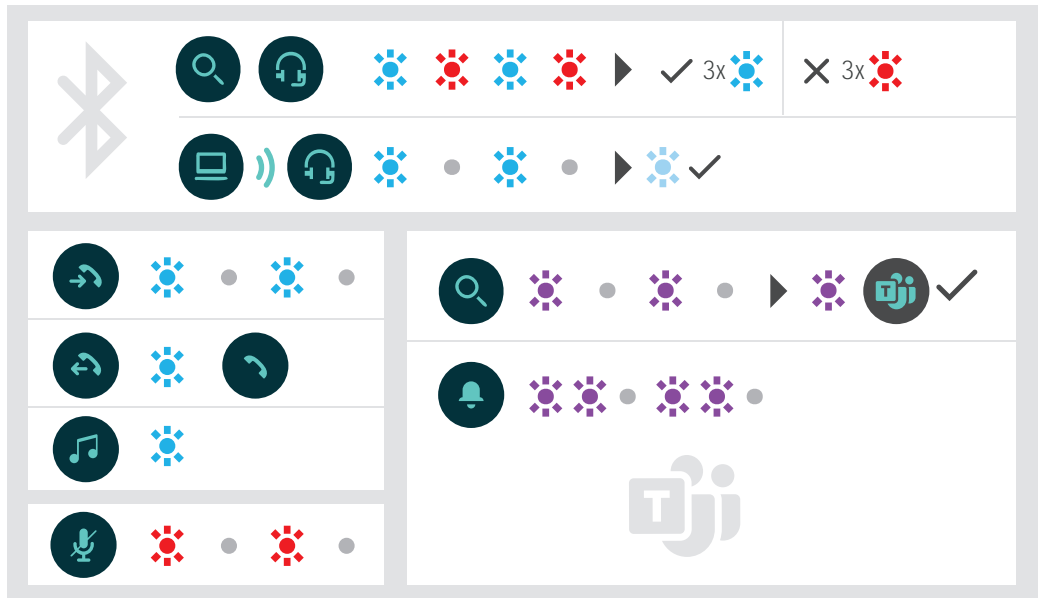
Reconnecting Bluetooth | Bluetooth wieder verbinden | Reconnecter le Bluetooth | Riconnessione Bluetooth | Desconectar el Bluetooth | Voltar a conectar o Bluetooth | Opnieuw verbinding maken met Bluetooth | Bluetooth | Sădan forbindes Bluetooth | Återansluta Bluetooth | Bluetoothin kytkeminen uudelleen | Ponownie podłączenie Bluetooth | Bluetooth | 重新连接蓝牙 | Bluetooth 重新連線 | Bluetooth ba lantısını yeniden kurulumu | Bluetooth の再接続 | Menghubungkan kembali dengan Bluetooth | 블루투스 다시 연결



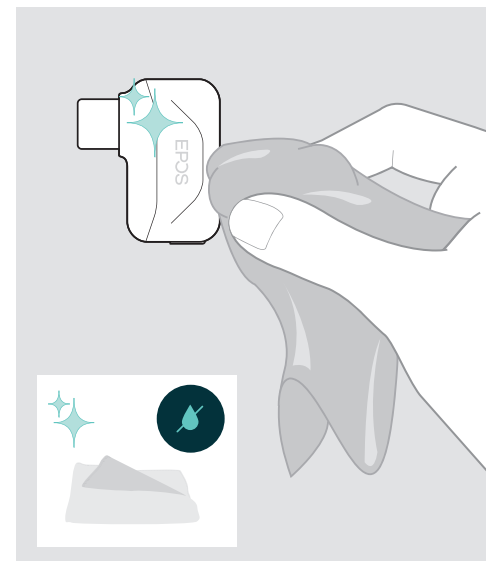
Disconnecting Bluetooth | Bluetooth trennen | Déconnecter le Bluetooth | Disconnessione Bluetooth | Desconectar el Bluetooth | Desconectar o Bluetooth | Bluetooth loskoppelen | Sădan frakobles Bluetooth | Frånkoppla Bluetooth | Bluetoothin kytkeminen katkaistu | Odłączenie Bluetooth | Bluetooth | 断开蓝牙 | 藍牙斷開連線 | Bluetooth ba lantırını kesilmesi | Bluetooth 接続の解除 | Memutuskan Bluetooth | 블루투스 연결 해제



Overview of the LED indications | Übersicht der LED-Anzeigen | Aperçu des indications LED | Panoramica degli indicatori LED | Resumen de los indicadores LED | Vista geral das indicações LED | Overzicht van de indicatielampjes | LED | Oversigt over indikatorlampens signaler | Översikt av LED-belysningen | LED-merkivalojen yleiskatsaus | Przegląd stanów diody LED | LED 显示内容概述 | LED 指示燈總覽 | LED göstergelere genel bakış | LED 表示の概要 | Gambaran umum tentang indikasi LED | LED 디스플레이 개관



Cleaning the product | Produkt reinigen | Nettoyage du produit | Pulizia del prodotto | Limpieza del producto | Limpar o produto | Het product reinigen | Rengöring af produktet | Rengöra produkten | Tuotteen puhdistus | Czyszczenie produktu | 清潔產品 | 清潔產品 | 清潔本產品 | Ürünün temizlenmesi | 製品のクリーニング | Membersihkan produk | 제품 청소



Detailed information | Ausführliche Informationen | Informations détaillées | Informazioni dettagliate | Información detallada | Informação detalhada | Gedetailleerde informatie | Detaljeret information | Detaljeret information | Yksityiskohtaiset tiedot | Szczegółowe informacje | 詳細情報 | 詳細資訊 | Ayrıntılı bilgi | 詳細情報 | Informasi terperinci | 상세 정보

