



AC1200 Wi-Fi Range Extender with AC Passthrough

High-Speed Dual Band Wi-Fi Extension



RE365



300Mbps +
867Mbps



Tether
App

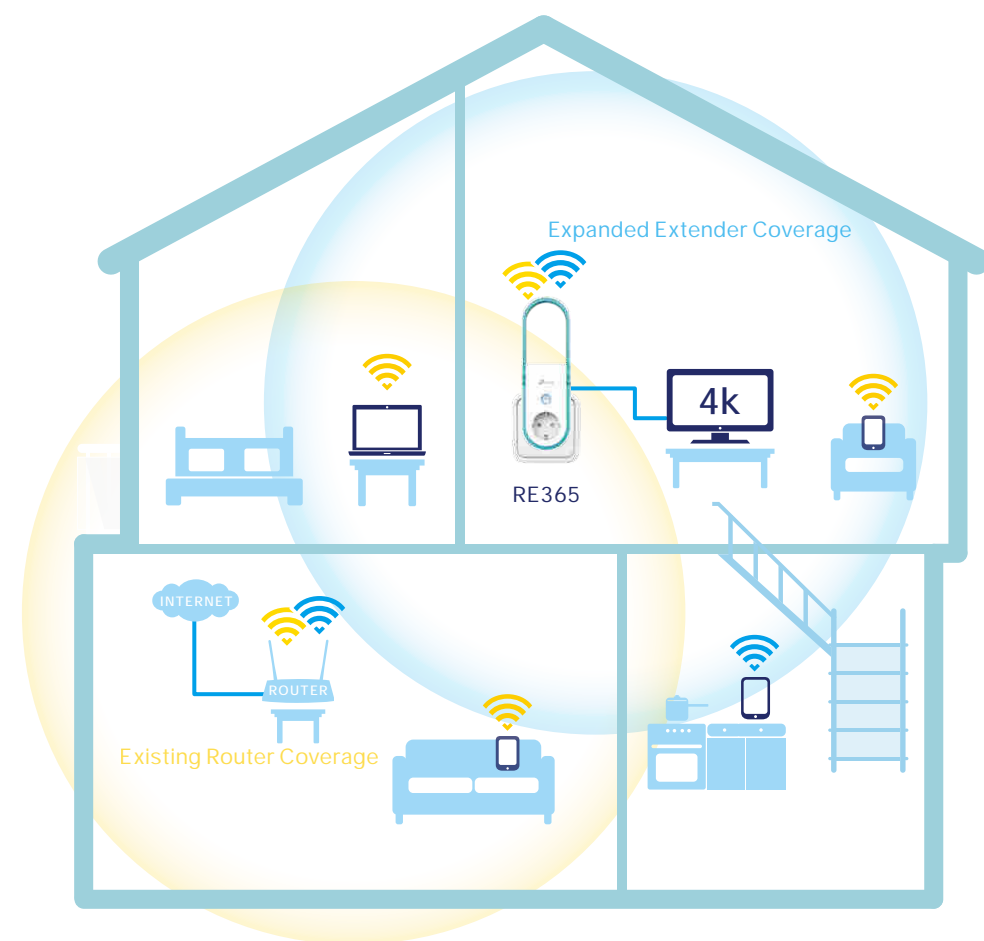


Access
Point Mode

Highlights

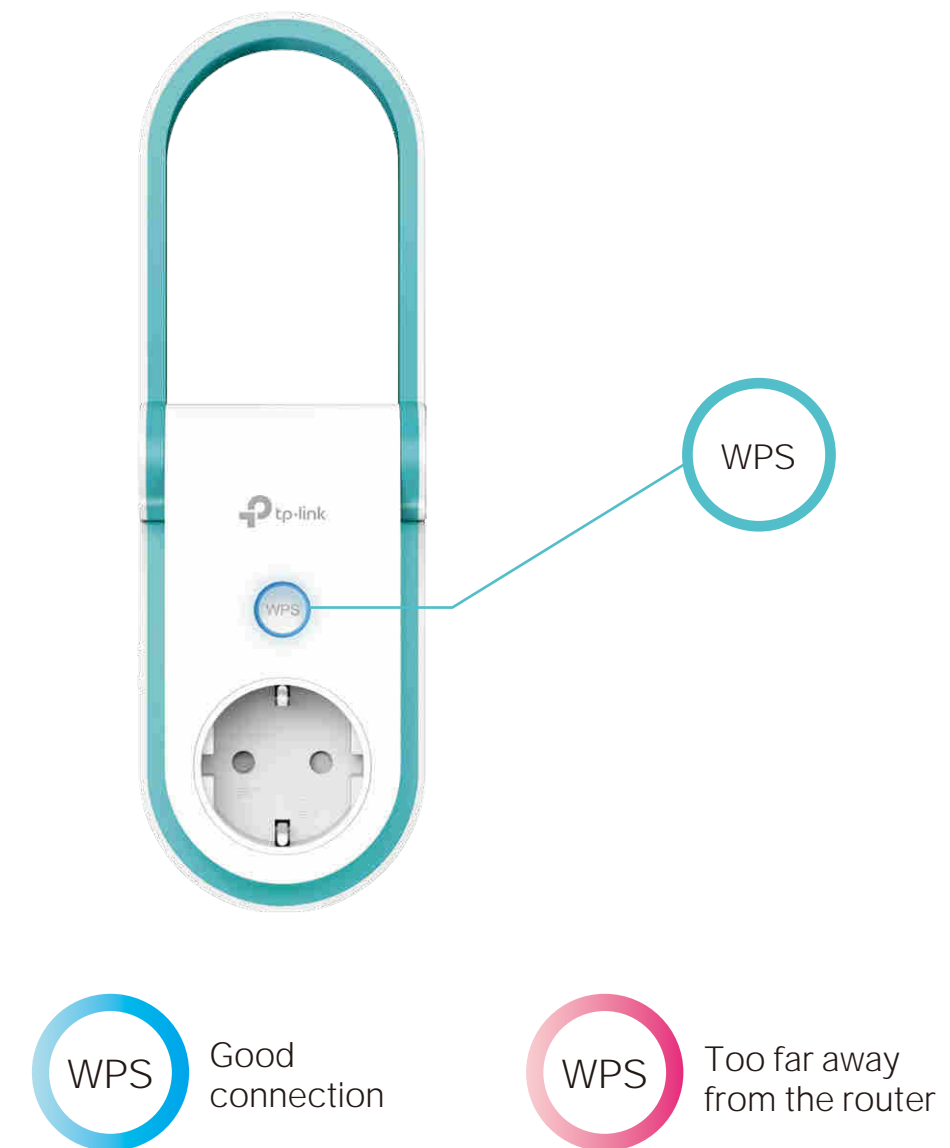
Extend the Range of Your Wi-Fi Network

The AC1200 Wi-Fi Range Extender connects to your router wirelessly, strengthening and expanding its signal into areas it can't reach on its own, achieving speeds of 300Mbps on the 2.4GHz band and 867Mbps on the 5GHz band.

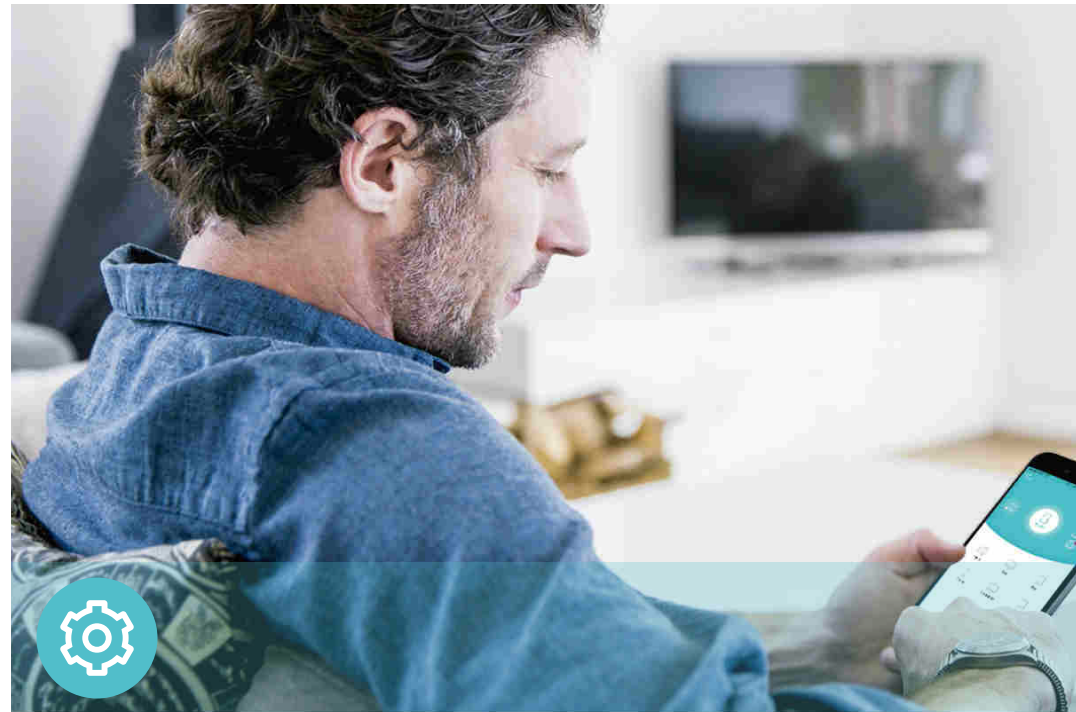


Perfect Location at a Glance

An Intelligent Signal light helps you quickly find the best spot to place the range extender.



Features



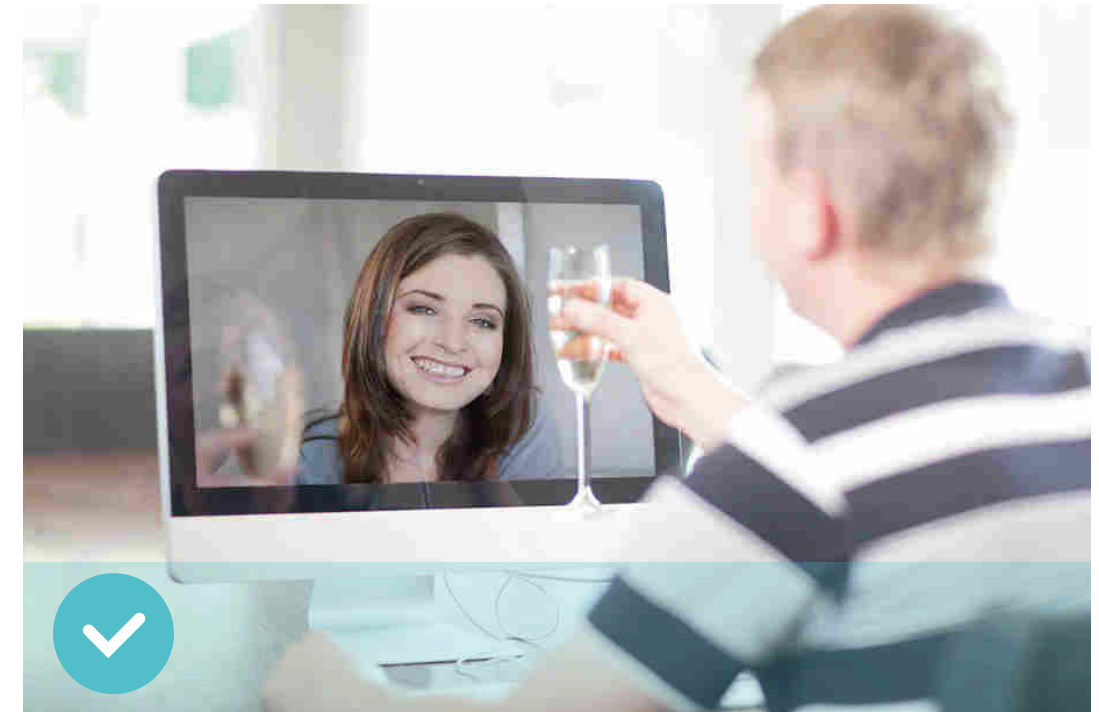
Ease of Use

- Intuitive Web UI – Ensures quick and simple installation without hassle
- Fast Encryption – One-touch wireless security encryption with the WPS button
- LED On/Off – Conveniently turn on or off LEDs as required
- Power On/Off – Conveniently power on or off your extender as required
- Hassle-free Management with Tether App – Network management is made easy with the TP-Link Tether App, available on any Android or iOS device



Speed

- Ultimate Wireless Speed – Wireless speeds of up to 300Mbps on the 2.4GHz band and 867Mbps on the 5GHz band
- Support 802.11 ac – Provides a data transfer rate 3 times faster than 802.11n for each stream
- Fast Ethernet Port – Acts as a wireless adapter to connect wired devices



Reliability

- Simultaneous Dual Band – Separate Wi-Fi bands enable more devices to connect to your network without a drop in performance
- Reliable Connection – Two adjustable antennas for optimal Wi-Fi coverage and reliable wireless connections
- Universal Compatibility – Works with any Wi-Fi router

Specifications

Hardware

- Ethernet Port: 1 10/100 RJ45 Port
- Button: WPS Button, Reset Button, LED On/Off Button, Power On/Off Button
- Antenna: 2 Antennas
- Power Consumption: CE: ≤6.5W, FCC: ≤8W
- Dimensions (L × W × H): 125×70×77mm



Wireless

- Wireless Standards: IEEE 802.11a/n/ac 5GHz, IEEE 802.11b/g/n 2.4GHz
- Frequency: 2.4GHz and 5GHz
- Signal Rate: 300Mbps at 2.4GHz, 867Mbps at 5GHz
- Transmit Power: CE: ≤18dBm, FCC: ≤19dBm
- Reception Sensitivity:
 - 5GHz:
 - 11a 6Mbps: -92dBm, 11a 54Mbps: -74dBm
 - 11ac HT20: -72dBm, 11ac HT40: -63dBm
 - 11ac HT80: -59dBm
 - 2.4GHz:
 - 11g 54Mbps: -75dBm, 11n HT20: -73dBm
 - 11n HT40: -70dBm
- Wireless Function: Enable/Disable Wireless Radio, Power Schedule, LED Control
- Wireless Security: 64/128-bit WEP, WPA/WPA2-PSK encryptions

Others

- Certification
CE, RoHS
- System Requirements
Microsoft Windows 98SE, NT, 2000, XP, Vista™ or Windows 7, 8, 8.1, 10, MAC OS, NetWare, UNIX or Linux
Internet Explorer 11, Firefox 12.0, Chrome 20.0, Safari 4.0, or other Java-enabled browser
- Package Contents
Range Extender
Quick Installation Guide



For more information, please visit

<http://www.tp-link.com/en/products/details/RE365.html>

or scan the QR code left

Specifications are subject to change without notice. TP-Link is a registered trademark of TP-Link Technologies CO., Ltd. Other brands and product names are trademarks or registered trademarks of their respective holders.

Maximum extended Wi-Fi coverage specification is based on performance test results. Actual Wi-Fi coverage may vary due to different environment, building material and wireless interferences. Maximum wireless speed of up to 1200Mbps is the theoretical data rate derived from IEEE standard 802.11 specifications. TP-Link makes no express or implied representations or warranties about this product's compatibility with any future standards. 802.11ac 1300Mbps is approximately 3 times faster than 802.11n 450Mbps. 2.4GHz Performance Mode requires 256 QAM support on Wi-Fi client.

www.tp-link.com

TP-Link AC1200 Wi-Fi Range Extender with AC Passthrough RE365