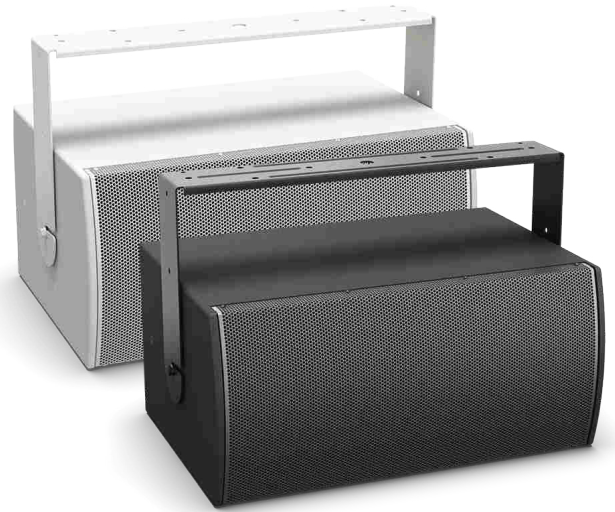


MB210-WR

outdoor-rated compact subwoofer

Product Overview

Bose Professional MB210-WR compact subwoofers are designed for outdoor installations of background/foreground music and small sound-reinforcement systems that require low-frequency extension down to 37 Hz. The MB210-WR subwoofer features two (2) 10-inch high-excursion woofers, derived from the award-winning Bose Professional F1 subwoofer, in a compact, exterior-grade plywood enclosure optimized for outdoor, fixed-installation applications. Featuring outstanding performance to size ratio, the MB210-WR is designed to complement Bose Professional loudspeaker lines, in outdoor applications, such as ArenaMatch Utility, Panaray, DesignMax, and Freespace, with additional bass impact.



Key Features

2 x 10" high-excursion woofers for high-output bass in a compact enclosure. Transducers derived from award-winning Bose F1 portable, powered subwoofer

500 W long-term power handling for high sound output and reliability

Low-frequency extension down to 37 Hz for impactful, deep-bass music reinforcement

123 dB maximum continuous SPL, 129 dB peak SPL

Exterior-grade plywood enclosure with compact size for installations

Install outdoors with an IP55 weather rating, three-layer stainless steel grille, water-resistant coating on woofer cone, industrial polyurea exterior coating, and molded cover to protect inputs

U-bracket included for easy mounting to walls or ceilings

MB210-WR

outdoor-rated compact subwoofer

Technical Specifications

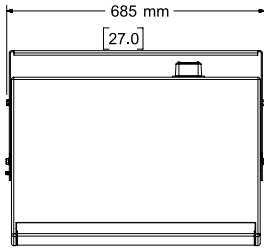
Single Subwoofer Performance				
Frequency Response (-3 dB) ⁽¹⁾	45 – 180 Hz			
Frequency Range (-10 dB)	37 – 270 Hz			
Recommended High-Pass Protection Filter	40 Hz with 24-dB / octave filter			
Nominal Coverage Pattern	Omnidirectional below 200 Hz			
	Bose extended-lifecycle test ⁽⁴⁾		AES transducer test ⁽⁵⁾	
Power Handling, long-term continuous	500 W		625 W	
Power Handling, peak	2000 W		2500 W	
	Free Field	Wall/Ceiling	Free Field	Wall/Ceiling
Sensitivity (SPL) / 1 W @ 1m ⁽⁴⁾	90 dB	96 dB	90 dB	96 dB
Calculated Maximum SPL 1m ⁽⁵⁾	117 dB	123 dB	118 dB	124 dB
Calculated Maximum SPL 1m, peak	123 dB	129 dB	124 dB	130 dB
Transducers				
Low Frequency	2 x Bose 10-inch, high-excursion woofers			
Nominal Impedance	8 ohms			
Physical				
Enclosure Material	Exterior-grade plywood			
Finish	Two-part polyurea coating, black or white			
Grille	Powder-coated perforated stainless steel, acoustic foam, stainless steel mesh			
Environmental	Rated for direct-exposure outdoor installations (IEC 60529: IP55)			
Connectors				
Connectors	1 x barrier strip (accepts 10 to 18 wire gauge)			
Suspension / Mounting	3 x M8 threaded inserts for U-bracket (per side)			
Dimensions (H x W x D)	291 x 685 x 517 mm (11.5 x 27.0 x 20.4 in)			
Dimensions without U-bracket (H x W x D)	291 x 659 x 484 mm (11.5 x 26.0 x 19.1 in)			
Net Weight (loudspeaker only)	19.4 kg (42.8 lb)			
Net Weight (with U-bracket)	23.0 kg (50.6 lb)			
Shipping Weight	27.7 kg (61.1 lb)			
Accessories	Included stainless-steel U-bracket			

Footnotes

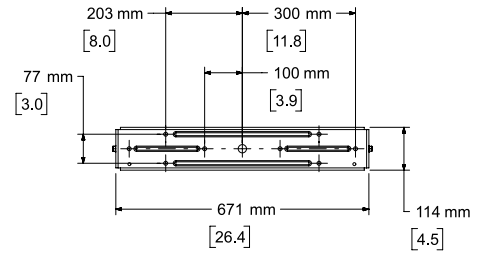
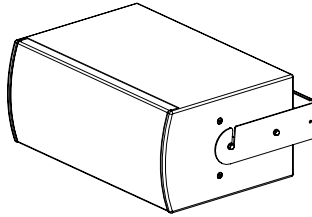
- (1) Frequency response and range measured on-axis in anechoic environment with recommended bandpass and EQ.
 (2) Bose extended-lifecycle test using pink noise filtered to meet IEC268-5, 6-dB crest factor, 500-hour duration.
 (3) AES standard 2-hour duration with IEC system noise.
 (4) Sensitivity measured in anechoic environment with recommended bandpass and EQ.
 (5) Maximum SPL calculated using sensitivity and power ratings, exclusive of power compression.

MB210-WR

outdoor-rated compact subwoofer



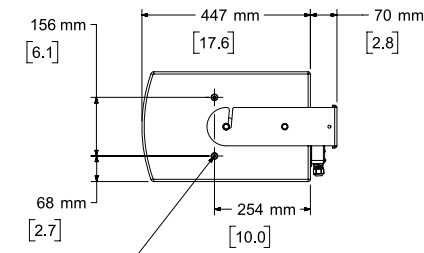
Top View



Rear View
BRACKET ONLY

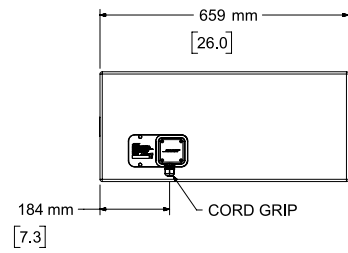


Front View



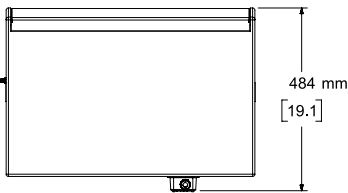
Right View

DIMENSIONS APPLY TO BOTH SIDES



Rear View

BRACKET REMOVED FOR CLARITY



Bottom View

BRACKET REMOVED FOR CLARITY

- NOTES:
1. DIMENSIONS ARE IN MILLIMETERS OVER INCHES
 2. WEIGHT APPROX 19.5kg [42.9lbs] (SPEAKER ONLY)
WEIGHT W/BRACKET 23.0kg [50.7lbs]

For additional specifications and application information, please visit PRO.BOSE.COM. Specifications subject to change without notice.