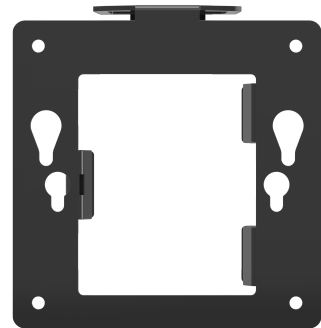


**PHILIPS**

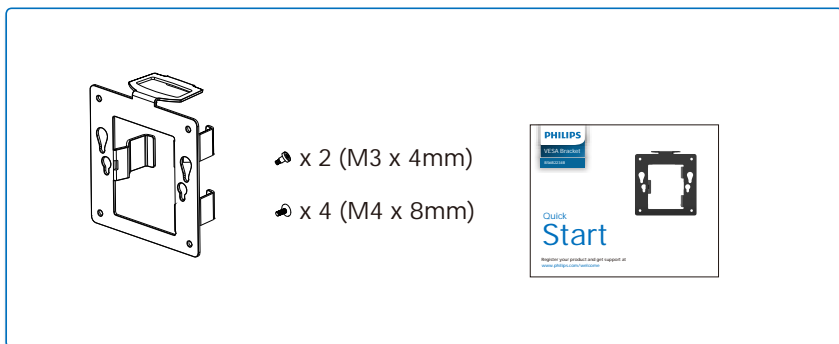
VESA Bracket

BS6B2234B



# Quick Start

Register your product and get support at [www.philips.com/welcome](http://www.philips.com/welcome)



Version: M6BS6B2234Q2T

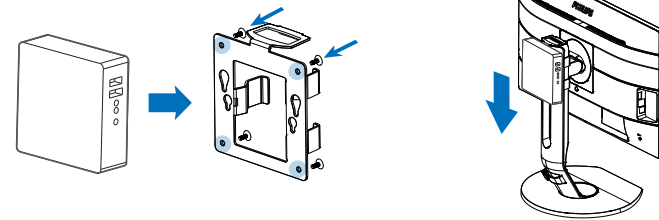


Q41G78D481316B

Compatible with Philips Height Adjustment Base of 221B6QPYE\*, 221B7\*\*\*E\*, 221P6\*\*\*\*, 231B7\*\*\*E\*, 240B7\*\*\*E\*, 241B6QPYE\*, 241B7\*\*\*E\*, 241P6\*\*\*\*, 242B7\*\*\*E\*, 242P7\*\*\*\*, 272B7\*\*\*E\*, 272P7\*\*\*\*

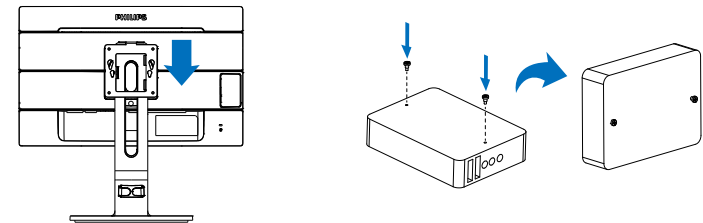
PC:

- 1 Align holes of VESA compliant device with those of bracket and screw up with the screws provided.
- 2 Clip the assembled VESA onto the bracket.



NUC:

- 1 Follow the arrows indicated on the the bracket, then slide the bracket on the stand until it's fixed.
- 2 Secure two screws to the rear cover of the NUC.



- 3 Slide the screws from up to down.

4

