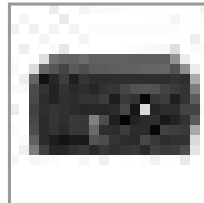
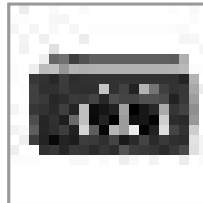
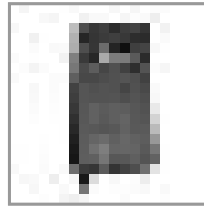


## Gigabit PoE+ Midspan Active Injector - IEEE 802.3at/802.3af, 30W, 1 Port, International Power Cords

MODEL NUMBER: NPOE-30W-1G-INT



PoE+ injector uses existing Cat5e/6/6a cable to supply power to a PoE device connected to a non-PoE switch.

### Features

#### Adds a PoE Device to Your LAN Without Adding a PoE Switch

Now you can add a surveillance camera, wireless access point, VoIP phone or other PoE (Power over Ethernet) device to your home or office network, even if your network switch doesn't support PoE. Instead of making an expensive upgrade to a PoE switch, you can use this single-port PoE+ injector to send 30 watts of power, as well as Gigabit Ethernet data, through your existing Cat5e/6/6a cabling.

#### Saves You Time and Money on Unnecessary Equipment Updates

This compact PoE+ injector delivers 10/100/1000 Mbps of data and up to 30 watts of power using existing Cat5e/6/6a cables. That means, in addition to not buying a new PoE network switch, you also don't need to install new AC power lines and electrical outlets. This cost-effective midspan injector sends DC power and Ethernet data through your Ethernet cable, cutting down on cable clutter, equipment costs and installation time and labor.

#### Expands Your PoE Network Up to 100 Meters

The NPOE-30W-1G-INT delivers both power and data to any IEEE 802.3at (PoE+) or IEEE 802.3af (PoE) device up to 100 meters (328 feet) away. This allows you to install a device in a building lobby, on a ceiling, inside a warehouse or anywhere else an AC power outlet is unavailable. The PoE+ injector supports full-duplex 2 Gbps communication for sending and receiving data simultaneously. It also protects your device against short circuits, high voltage and overloads.

#### Simple Plug-and-Play Installation Has Your Device Connected in Minutes

No configuration or software is required to add the NPOE-30W-1G-INT to your LAN. Just connect your switch or network jack to the shielded RJ45 LAN port and your PoE device to the shielded RJ45 POE port using existing Cat5e/6/6a cable. Connect the unit to an outlet using the included power supply with the included UK or European power cords. LEDs indicate the unit is receiving power and is ready to transmit data.

#### Designed for Installation Almost Anywhere

Mounting holes are featured for installing the midspan injector on a shelf, desktop, wall or any other smooth surface with user-supplied hardware. The black plastic housing fits in the palm of your hand, so it is small enough to hide away without interfering with your workflow or décor. The fanless design is ideal

### Highlights

- Saves money by delivering 30W of power + data up to 100 m through existing cabling
- Extends power + data to any PoE or PoE+ device installed where no AC outlet is available
- Supports Gigabit Ethernet data transfer speeds up to 1000 Mbps (1 Gbps)
- Quick and easy plug-and-play installation with no configuration necessary
- Compact, hand-sized plastic housing ready for mounting on any smooth surface

### Package Includes

- NPOE-30W-1G-INT Gigabit PoE+ Midspan Active Injector
- External power supply (Input: 100–240V, 50/60 Hz, 0.75A)
- (2) International power cords (Europe, U.K.)
- Owner's manual

for silent operation.

## Specifications

<b>OVERVIEW</b>	
UPC Code	037332272010
Product Type	Injector
Technology	Cat5/5e; Cat6; Cat6a
<b>INPUT</b>	
Voltage Compatibility (VAC)	100; 110; 120; 127; 200; 208; 220; 230; 240
Input Frequency	50/60 Hz
Input Plug Type	BS1363; Schuko
Input Cord Length (ft.)	1.96
Input Cord Length (m)	0.60
Input Current	0.75A
<b>OUTPUT</b>	
Output Voltage (VDC)	53V±2V
<b>POWER</b>	
Power Consumption (Watts)	30.00
<b>USER INTERFACE, ALERTS &amp; CONTROLS</b>	
LED Indicators	Orange (Power On), Purple (PoE On)
<b>PHYSICAL</b>	
Primary Form Factor	Desktop
Color	Black
Mounting Holes or Slots	No
Shipping Dimensions (hwd / in.)	3.50 x 3.70 x 7.00
Shipping Weight (lbs.)	1.20
Unit Dimensions (hwd / in.)	1.400 x 2.600 x 5.400
Unit Packaging Type	Box
Unit Weight (lbs.)	0.55
Unit Weight (kg)	0.25

<b>ENVIRONMENTAL</b>	
Operating Temperature Range	32° to 122°F (0° to 50°C)
Storage Temperature Range	-4° to 176°F (-20° to 80°C)
Relative Humidity	10% to 90% RH, Non-Condensing
<b>COMMUNICATIONS</b>	
Network Compatibility	1 Gbps (Gigabit)
IEEE Standards Supported	802.3; 802.3ab; 802.3af; 802.3at; 802.3u
<b>CONNECTIONS</b>	
PoE Capability	30W (802.3at)
PoE Supported Ports	1
Side A - Connector 1	RJ45 (FEMALE)
Side B - Connector 1	RJ45 (FEMALE)
Network Switch Ports	10/100/1000 (RJ45)
PoE Type	Type 2 PoE+ (30W, IEEE 802.3at)
Max. Power Delivered by PSE	30.0 W
<b>FEATURES &amp; SPECIFICATIONS</b>	
Recommended Category Cable	Cat 5, Cat5e, Cat6, Cat6a Cables
<b>STANDARDS &amp; COMPLIANCE</b>	
Product Certifications	UL Listed
Product Compliance	RoHS; CE (Europe); REACH; WEEE; FCC (USA)
<b>WARRANTY &amp; SUPPORT</b>	
Product Warranty Period (Worldwide)	3-year limited warranty