

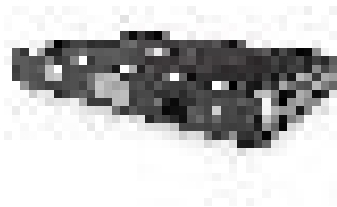


KRAMER

KDS-EN7

High-performance, highly-scalable, AVoIP
Encoder for 4K60 4:2:0, HDR10 over 1G
network

| HDMI | Ethernet - RJ-45 | 4K/60 UHD (4:2:0)
| HDCP 2.2 Compatible



KDS-EN7 encoder is an advanced transmitter for streaming 4K@60Hz (4:2:0) video signals via Ethernet over copper cable. It encodes and streams over an IP network from HDMI input, and transmits the USB, IR, RS232, or CEC signal over IP network

FEATURES

Outstanding end-user experience -

Rich set of inputs and interfaces

Easy-to-use KM/KVM - Searchable OSD Menu for KM and fully configurable KVM roaming

Large scale video wall - up to 16x16

Instantaneous switching time - 1 second

Ideal for large-scale deployments -

Highly scalable - 999 channels build in support

State of the art management device

Rich set of management capabilities - Standard P3K Open API , LCD screen for configuration

Robust security -

Enterprise IT-grade security - 802.1x and HTTPS/TLS

Security certification - OWASP Top 10 certificate

Separate ETH ports for optimal security and experience

New HW architecture that enables robust FW update

Simple planning and rollout: -

Cost-effective from day one

Full product range for any site, any application

Plug-and-play with Netgear M4250 AVoIP switches, Kramer Control, KDS-USB2, etc.

PoE Support -

Using PoE switch - up to 13W consumption

Alternative sources/destinations -

HDMI Loop-Through on Encoder and HDMI Input on Decoder

Analog Audio -

Embedding and De-embedding

Control gateway - Through P3K control/communicate with IR, RS232, or CEC to the connected devices

Through P3K control/communicate with IR, RS232, or CEC to the connected devices



TECHNICAL SPECIFICATIONS

Inputs	1 HDMI:
Outputs	1 HDMI: On a female HDMI connector
Ports	2 Ethernets: On R-J45 connectors 1 Balanced Audio: On a 5-pin terminal block connector 1 RS-232: On a 3-pin terminal block connector 1 IR: On a 3.5mm TRS connector 1 USB Host: On a USB-B connector
Video	Compression Standard: JPEG based, private stream Max Resolution: 4K60 4:2:0 or 4K30 4:4:4 HDR 10: Up to 4K30 4:2:2 12 bit
User Interface	Indicators: LINK, NET and ON LEDs, front panel LCD Display Controls: Restart and factory reset rear panel button, embedded web pages, P3K API commands via Ethernet, front panel navigation buttons
Power	PoE on LAN(PoE) port 24V DC Consumption: 6W
Environmental Conditions	Operating Temperature: 0 to + 45°C (32 to + 113 °F), 10% to 90%, non-condensing Storage Temperature: -20 to +70°C (-4 to + 158 °F), 10% to 90%, non-condensing Humidity: 10% to 90%, non-condensing
General	Product Dimensions: 18.9cm x 14.5cm x 2.76cm (7.4" x 5.7" x 1") W, D, H Shipping Dimensions: 31.2cm x 17.9cm x 7.6cm (12.2" x 7.04" x 2.9") W, D, H Product Weight: 0.67kg (1.4lbs) approx Shipping Weight: 0.93kg (2.05lbs) approx
Product Dimensions	18.90cm x 14.50cm x 2.76cm (7.44" x 5.71" x 1.09") W, D, H
Product Weight	0.7kg (1.5lbs) approx
Shipping Dimensions	31.20cm x 17.90cm x 7.60cm (12.28" x 7.05" x 2.99") W, D, H
Shipping Weight	0.9kg (2.1lbs) approx

