

# Panasonic

AW-UE50W AW-UE40W AW-UE30W [White Model]  
AW-UE50K AW-UE40K AW-UE30K [Black Model]  
4K Integrated Camera For Indoor Use



**Provides hybrid online-offline environment.  
Standard models suitable for use in online classes  
and online briefing sessions.**

## Camera performance and functions assure high-quality video streaming.

Featuring 4K resolution, horizontal wide-angle coverage of up to 74.1° and a maximum 24x<sup>\*1</sup>/20x<sup>\*2</sup> optical zoom, the UE50/40/30 maintains superb quality and functionality for video streaming. The built-in auto tracking function and image stabilizer function contribute to stable video streaming.

<sup>\*1</sup> AW-UE50 and AW-UE40  
<sup>\*2</sup> AW-UE30

## Small size, quietness and stability for use anywhere.

The UE50/40/30 are lightweight and compact. The new direct-drive motor with an operating sound of NC25 or lower achieves highly accurate stopping position precision and enables accurate camerawork. They can be installed and used at any video shooting site. The UE50/40/30 supports SRT<sup>\*1</sup> and NDI<sup>®</sup> HX<sup>\*2</sup> to assure stable and safe video streaming.

<sup>\*1</sup> Abbreviation for Secure Reliable Transport  
<sup>\*2</sup> NDI<sup>®</sup> HX is supported only by AW-UE50 and AW-UE40. NDI<sup>®</sup> is a registered trademark of Vizrt NDI AB in the United States and other countries.

## Excellent system flexibility to achieve smart wiring and smooth operation.

By using a Panasonic remote camera controller or linking with available software, the camera can be easily installed, managed and operated. The UE50/UE40/UE30 are suitable for replacing an existing camera or for expanding your current system.



\* AW-UE50, AW-UE40 only.

# Invaluable features and functions to deliver flexibility to any video shooting needs

## Supports SRT\* to ensure stable video streaming

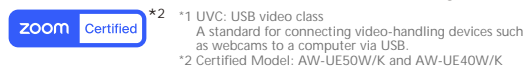


UE50/40/30 supports SRT, a next-generation video transport protocol that provides robust security and works well, even with an unstable network environment.

\*Abbreviation for Secure Reliable Transport

## Use in online conferences as web camera

The UE50/40/30 supports UVC\*1 so the video and audio signals can be transmitted over USB. By using the PTZ Virtual USB Driver software and connecting with a LAN cable, it is possible to use the UE50/40/30 as a USB camera. This can also be linked with Panopto. With Zoom certification and a dedicated mode (USB: Video Conference), the AW-UE50/40 are ideal for web conferencing.



\*1 UVC: USB video class  
A standard for connecting video-handling devices such as webcams to a computer via USB.  
\*2 Certified Model: AW-UE50W/K and AW-UE40W/K

## Supports 4 interfaces

The UE50/40/30 supports four output interfaces—3G-SDI\*, HDMI, IP and USB—so it can be used with a wide range of devices.



AW-UE50



AW-UE40/AW-UE30

\*3G-SDI is supported only by AW-UE50.

## Accessories



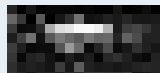
### Remote Camera Controller AW-RP150

High operability ensured through touch-panel GUI monitor and a new type of joystick.



### Remote Camera Controller AW-RP60

Equipped with a GUI menu screen for clear visibility and a joystick for intuitive control.



### Media Production Suite Free

Software Platform for Smart Operation and Rich Expression

#### Basic Functions Device View / PTZ Control

Plug-ins (Additional Fee)

- Auto Tracking** — Auto Tracking Software Key AW-SF100/200  
Automatically tracks speaker and captures clear images
- Visual Preset** — Visual Preset Software Key AW-SF300  
Switches subject of multiple PTZ cameras with a single click
- Video Mixer** — Video Mixer Software Key AW-SF400  
Diverse video compositions created easily with PC

## Supports NDI® HX

The UE50/40 realizes effective IP transmission of high-quality videos even with limited bandwidth. Since the video source can be accessed from any device on the same network, even devices with unknown IP addresses are automatically recognized.

\*NDI® HX is supported only by AW-UE50 and AW-UE40.

## Single controller\* can control up to 200 camera units

By using the free software, Media Production Suite, or connecting a Panasonic remote camera controller, multiple remote camera units can be controlled at once from the single controller for easy management and control.

\*This function can be used only with Panasonic PTZ camera controllers AW-RP150 and AW-RP60.

## Built-in auto tracking function

The UE50/40/30's built-in auto-tracking function allows capturing a moving presenter and speaker. The camera work follows the speaker without the need for detailed operation by the operator, allowing for realistic video shooting at any time.

## Other features

- Unit design makes the lens unnoticeable
- Equipped with Privacy Mode which positions the lens toward the back when on standby
- Equipped with Optical Image Stabilizer (OIS)
- Web GUI for camera control

## AW-UE50W/K, AW-UE40W/K, AW-UE30W/K Specifications

Comprehensive		
Power Requirements		DC 12 V ± 10 % (10.8 V to 13.2 V) (Supplied AC adapter)
PoE+		IEEE 802.3 at compliant: DC42-57 V
Current Consumption		1.8 A (AC adaptor input), 0.6 A (PoE+ power supply)
Mass		Approx. 1.8 kg (3.97 lbs) (excluding ceiling mounting bracket)
External Dimensions		Width 160.0 mm × Height 192.1 mm × Depth 166.0 mm (6.299 inches × 7.563 inches × 6.535 inches) (Excluding protrusions, cable cover, ceiling mounting bracket)
Camera Part		
Effective Pixels		approx. 8.49 million pixels
Image Sensors		1/2.5-type MOSx1
Lens		[AW-UE50/AW-UE40] F1.8 ~ F4.0 (f = 4.12 mm - 98.9 mm, 35 mm conversion : 25.0 ~ 600.0 mm) [AW-UE30] F1.8 ~ F3.9 (f = 4.12 mm - 82.4 mm, 35 mm conversion : 25.0 ~ 500.0 mm)
Zoom Magnification		• Optical zoom: [AW-UE50/AW-UE40] 24 x, [AW-UE30] 20 x • i.Zoom: [AW-UE50/AW-UE40] UHD 28 x, FHD 36 x, [AW-UE30] UHD 23 x, FHD 30 x • Digital extender zoom: 1.4 x, 2 x
Angle of View Range		[AW-UE50/AW-UE40] Horizontal angle of view: 74.1° (wide) to 3.3° (tele) Vertical angle of view: 46.0° (wide) to 1.9° (tele) Diagonal angle of view: 81.8° (wide) to 3.8° (tele) [AW-UE30] Horizontal angle of view: 74.1° (wide) to 4.0° (tele) Vertical angle of view: 46.0° (wide) to 2.2° (tele) Diagonal angle of view: 81.8° (wide) to 4.5° (tele)
Horizontal Resolution		UHD: 1,500 Typ (Center area) FHD: 1,000 Typ (Center area)
Output Format	SDI HD	[AW-UE50] 1080/59.94p, 1080/50p, 1080/59.94i, 1080/50i, 1080/29.97p(Native), 1080/25p(Native), 1080/23.98p(over59.94i), 1080/29.97psF, 1080/25psF, 1080/23.98psF, 1080/24p(Just), 1080/23.98p(Native), 720/59.94p, 720/50p [AW-UE40/AW-UE30] —
	HDMI 4K HD	2160 / 29.97p (Native), 2160 / 25p (Native), 2160 / 24p (Just), 2160 / 23.98p (Native) 1080/59.94p, 50p, 1080/59.94i, 50i, 1080/29.97p(Native), 25p(Native), 23.98p(over59.94p), 1080/24p(Just), 23.98p(Native), 720/59.94p, 50p
Output		
Video Output	HDMI	HDMI 1.4 connector, 4:2:2 / 10 bit
	3G-SDI OUT	[AW-UE50] SMPTE 292 M, 424 M / 75 (BNCx1), [AW-UE40/AW-UE30] —
Input/Output		
Input/Output Connector	LAN	LAN terminal for IP control (RJ-45)
	RS-422	CONTROL IN RS422A (RJ-45)
	USB	USB2.0 DEVICE, Type C connector, No USB bus power functionality •UVC (USB Video Class) support only*UVC1.0, UAC1.0
	MIC/LINE input	AAC compatibility (compatible with IP only), 3.5 mm stereo mini jack
	During MIC input	Input level: -40 dBV (0 dB = 1 V / Pa, 1 kHz), Supply voltage: 2.5 V ± 0.5 V (plug-in power compatible)
	During LINE input	Input level: -10 dBV
Rotating Platform Part		
Pan Operating Range		± 175°
Tilt Operating Range		-30° ~ 90°*1
IP Streaming		
Image Streaming Mode		[AW-UE50/AW-UE40] JPEG (MJPEG), H.264, H.265, NDI® HX*2 (H.264) [AW-UE30] JPEG (MJPEG), H.264, H.265
Image Resolution		1920×1080, 1280×720, 640×360, 320×180
Image Transmission Setting	H.264	Transmission Type: Unicast port (AUTO), Unicast port (MANUAL), Multicast port Frame rate: [At 60Hz] 5fps / 15fps / 30 fps / 60 fps, [At 50Hz] 5 fps / 12.5 fps / 25 fps / 50 fps Max Bit Rate: 512 kbps / 768 kbps / 1024 kbps / 1536 kbps / 2048 kbps / 3072 kbps / 4096 kbps / 6144 kbps / 8192 kbps / 10240 kbps / 12288 kbps / 14336 kbps / 16384 kbps / 20480 kbps / 24576 kbps
	H.265	Transmission Type: Unicast port (AUTO), Unicast port (MANUAL), Multicast port Frame rate: [At 60Hz] 30 fps / 60 fps, [At 50Hz] 25 fps / 50 fps Max Bit Rate: Same specifications as H.264
	NDI® HX	[AW-UE50/AW-UE40] Transmission Type: TCP / UDP, Unicast / Multicast [AW-UE30] —

\*1 The main unit may appear in the video depending on the pan/tilt position.

\*2 For details, please contact a sales representative of Panasonic. Regarding the purchase of license, refer to "4K/HD Integrated Camera NDI HX Support Information" ([https://pro-av.panasonic.net/en/support/notes/ndihx\\_support.html](https://pro-av.panasonic.net/en/support/notes/ndihx_support.html)).

\*This specification is a part. Please see the website for details.

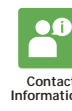


For more information, please visit  
Panasonic web site

[https://pro-av.panasonic.net/en/?cid=f\\_r\\_prd\\_mebd-ue80\\_240401](https://pro-av.panasonic.net/en/?cid=f_r_prd_mebd-ue80_240401)



Broadcast and Professional AV Website



Contact Information



Facebook



Mobile App



Panasonic Entertainment & Communication Co., Ltd.  
1-10-12 Yagumo-higashi-machi, Moriguchi City, Osaka 570-0021, Japan

SP-C-UE504030ENS1