

## 1. Disassembly Procedures:

**S1** Open the carton with a proper tool.



Take out all accessories including label(optional), QSG, Delta-E paper, DP cable, USB C to C cable(Type-C cable), USB A to C cable(USB cable), power cable, manual from the carton. (Note: It depends on whether users returning the accessories)

**S2**



**S3**

Take out the paper top with base from the carton, then take out the monitor and stand from the carton.



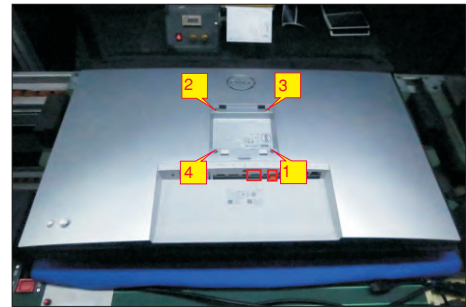
**S4**

Take out the monitor from EPE-bag and put the LCD monitor on a protective cushion.



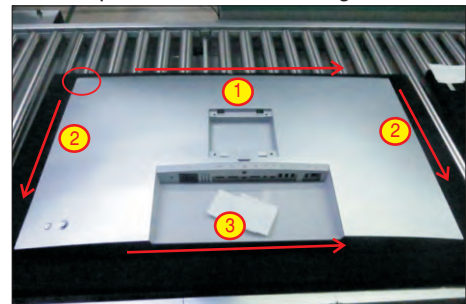
**S5**

Use a Philips-head screwdriver to remove 4pcs screws for unlocking mechanisms. Remove DP caps. (No.1~4 screw size=M4x11; Torque=11±1kgfxcm)



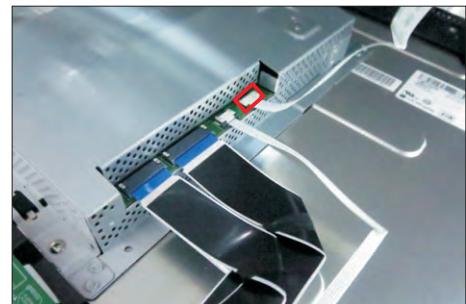
Tear off the screen protector, then wedge fingers between rear cover and the middle bezel on the corners of the top side of the monitor to release the rear cover, then use one hand to press the middle bezel, the other hand to pull up the rear cover in order of arrow preference for unlocking the rear cover.

**S6**



Lift the rear cover up carefully. Disconnect the joystick key cable from the connector of the interface board, and then remove the rear cover and put it aside for later disassembling.

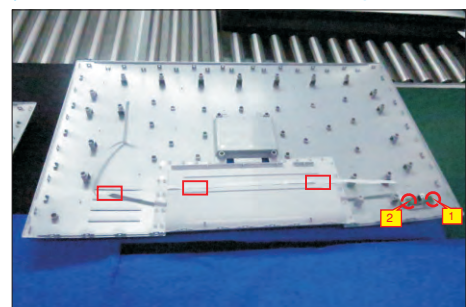
**S7**



Use a Philips-head screwdriver to remove 2pcs screw for unlocking the key board, then tear off the tapes and release the key board.

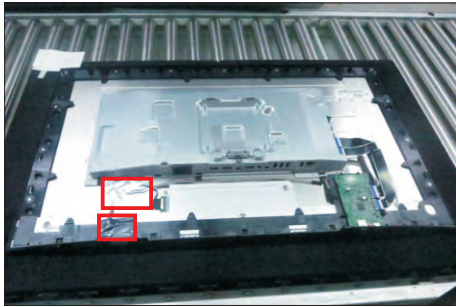
**S8**

(No.1~2 screw size=M2x2.4, Torque=0.8~1kgfxcm)



S9

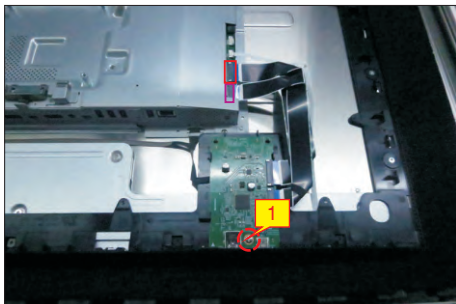
Tear off 1pcs aluminum foil for unfixing the bracket, then tear off 1pcs acetate tape for uncovering the LVDS connector.



Use a Philips-head screwdriver to release one screw for unlocking the USB board, and disconnect the two cables, then release the USB board from the hooks of the middle bezel.

(No.1 screw size=M3x6, Torque=4±0.5kgfxcM)

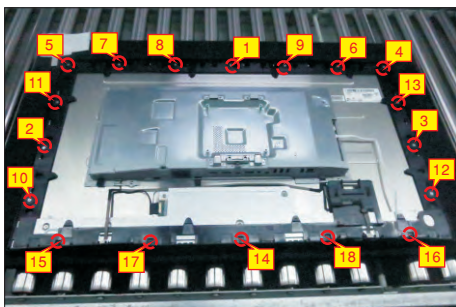
S10



Use a Philips-head screwdriver to remove 18(13+5)pcs screws for unlocking the middle bezel with the panel module.

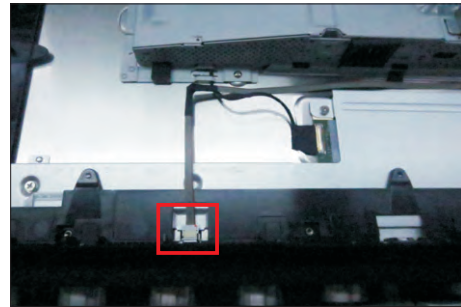
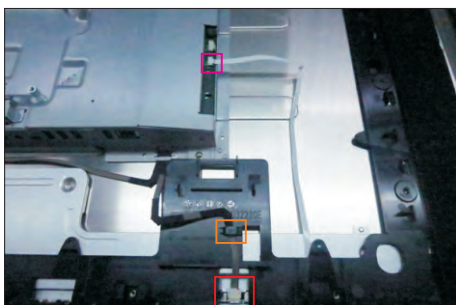
(No.1~13 screw size=M3x5, Torque=5±0.5kgfxcM;  
No.13~18 screw size=M3x4.5, Torque=5±0.5kgfxcM)

S11



Disconnect the two panel lamp cables from the connectors of the panel. Disconnect the LED cable from the connector of the interface board.

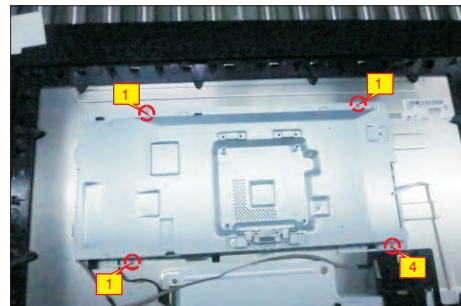
S12



Use a Philips-head screwdriver to remove 4pcs screws for unlocking the bracket chassis module with the panel.

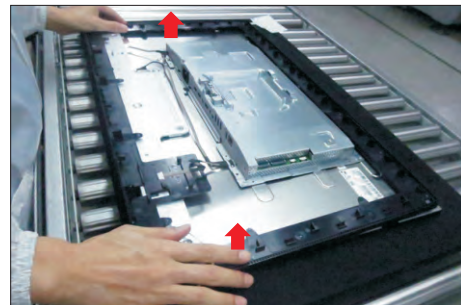
(No.1~4 Screw size= M3x5, Torque=5±0.5kgfxcM)

S13



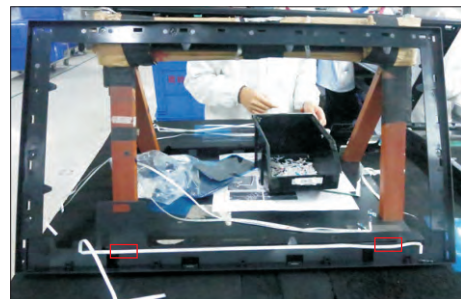
Lift up the middle bezel, and then put it on a cushion foam for later disassembling.

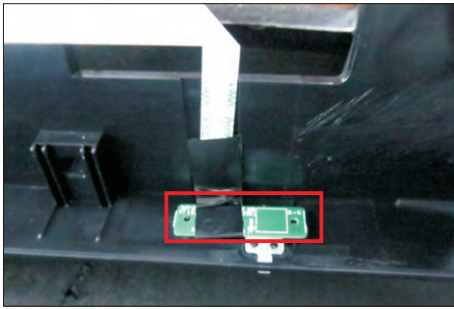
S14



Tear off the tape on the middle bezel for releasing the LED cable, and then tear off the mylar tape to release the LED board for the hooks of the middle bezel.

S15

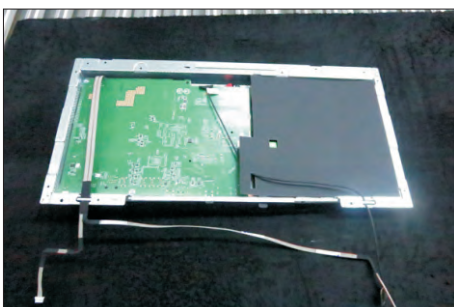
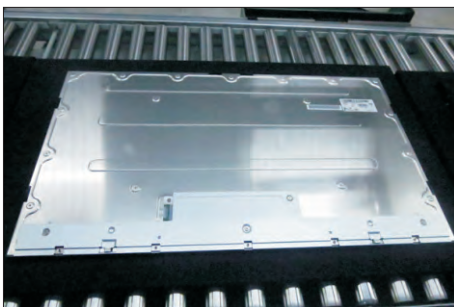
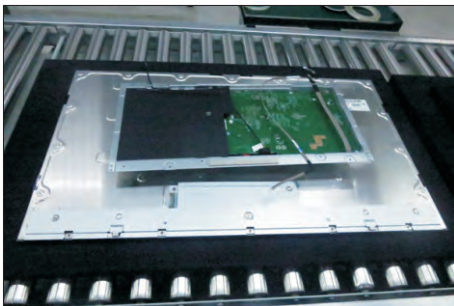




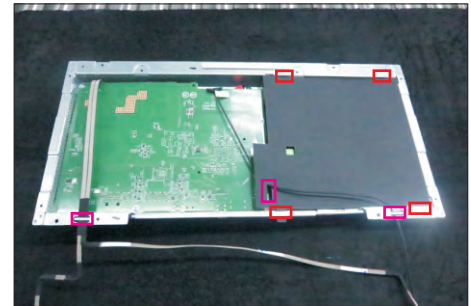
- S16** Move up the bracket, then push the earing-lock and disconnect the LVDS cable away from the connectors of the panel module.



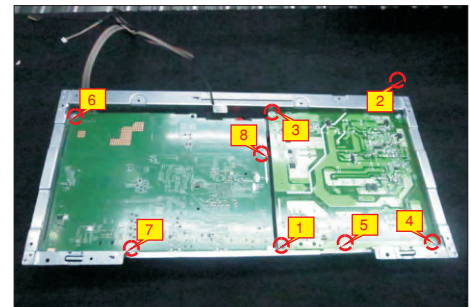
- S17** Take away the bracket chassis module and then put the bracket chassis module on a protective cushion.



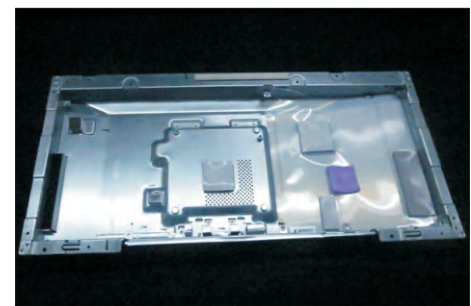
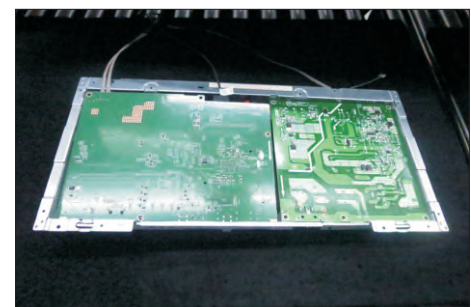
- S18** Release the panel lamp cables from the hooks of the bracket, then remove the Mylar tape from the hooks of the bracket.



- S19** Use a Philips-head screwdriver to remove 8pcs screws for interface board and power board.  
(No.1 screw size=M4x8, Torque=7±1kgfxcM;  
No.2~8 screw size=M3x7.5, Torque=7±1kgfxcM)

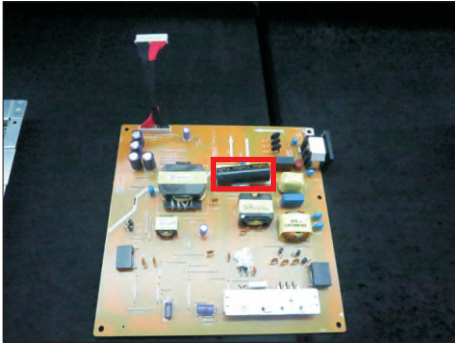


- S20** Remove the power board board and interface board from the bracket chassis module carefully, and then disconnect all of the cables.

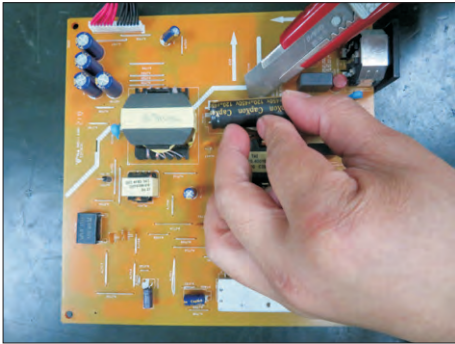


S21

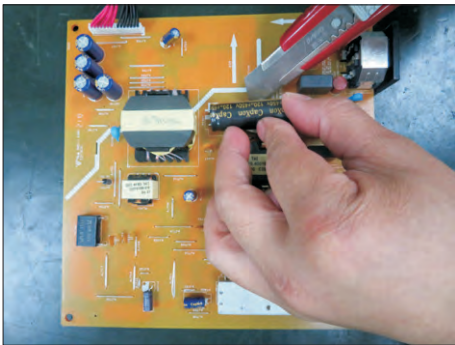
Remove electrolyte capacitors (red mark) from printed circuit boards.



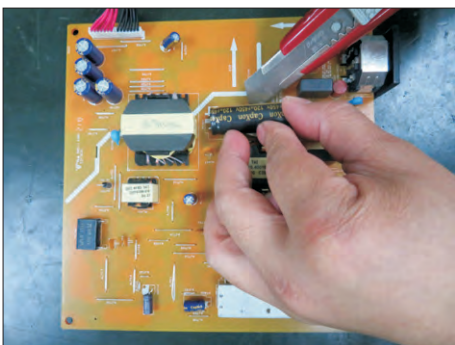
S21-1 Cut the glue between bulk cap. and PCB with a knife.



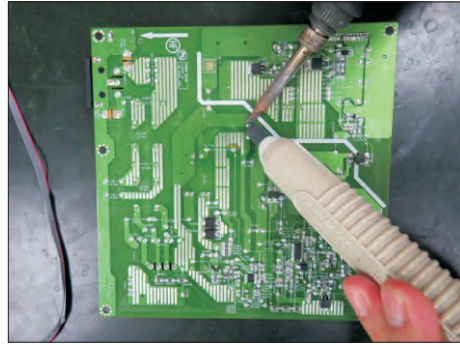
S21-2 Ensure cutting path within the glue, don't touch bulk cap. or PCB.



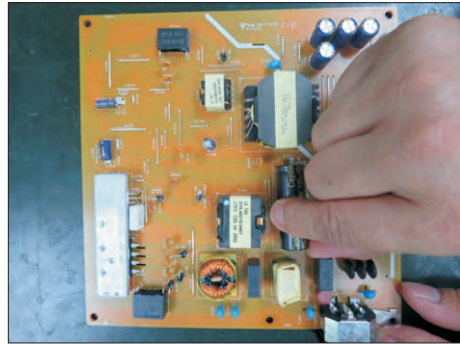
S21-3 Cut into the bottom of bulk cap. and pullit up carefully.



S21-4 Take out bulk cap. pin solder with soldering iron and absorber.



S21-5 Lift the bulk cap. up and away from the PCB.



## 2. Product material information

The following substances, preparations, or components should be disposed of or recovered separately from other WEEE in compliance with Article 4 of EU Council Directive 75/442/EEC.

Capacitors / condensers (containing PCB/PCT)	No used
Mercury containing components	No used
Batteries	No used
Printed circuit boards (with a surface greater than 10 square cm)	Product has printed circuit boards (with a surface greater than 10 square cm)
Component contain toner, ink and liquids	No used
Plastic containing BFR	No used
Component and waste contain asbestos	No used
CRT	No used
Component contain CFC, HCFC, HFC and HC	No used
Gas discharge lamps	No used
LCD display > 100 cm <sup>2</sup>	Product has an LCD greater than 100 cm <sup>2</sup>
External electric cable	Product has external cables
Component contain refractory ceramic fibers	No used
Component contain radio-active substances	No used
Electrolyte capacitors (height > 25mm, diameter > 25mm)	Product has electrolyte capacitors (height > 25mm, diameter > 25mm)

## 3. Tools Required

List the type and size of the tools that would typically can be used to disassemble the product to a point where components and materials requiring selective treatment can be removed.

Tool Description:

- Screwdriver (Phillip head) #1
- Screwdriver (Phillip head) #2
- Penknife
- Soldering iron and absorber