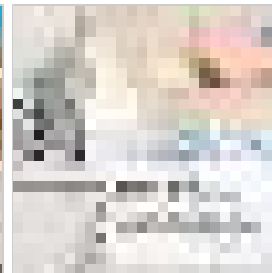
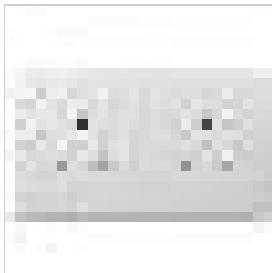




WiFi Connekt SMART Socket

Brand: Connekt Gear
Code: 27-3000/SMART
Box Qty: 20





Why do you need it?

You need a socket that will allow you to access and control any appliances that are plugged into it from your phone or via Alexa or Google voice control.

What does it do?

Enables you to take control of your appliances anywhere with remote access. Schedule and control appliances from your phone with the FREE SMART Connekt App - SMART connectivity that can enhance any lifestyle.

If you suffer with mobility issues you now no longer have to struggle to reach your sockets... for those with a busy lifestyle scheduling & controlling your appliances remotely can be a real helping hand... and for those who just enjoy the SMARTER Lifestyle make the most of the SMART features such as Alexa & Google voice control and IFTTT Function.

Create a Smarter, Safer home with WiFi Connekt's automated lifestyle SMART Socket.

Product Details

- Schedule & control appliances anywhere using your mobile phone via the SMART Connekt APP
- Works with Alexa & Google voice control
- Supports IFTTT allowing you to create personalised automations
- Peace of mind – Check if appliances have been left on
- Easier for those with mobility issues to control appliances
- Protect your home – Switch lamps on/off as if you are at home
- Save money – Effective way of reducing energy bills
- New touch sensitive switches
- Effortless installation - simple to install either in new builds or replacement for existing electrical sockets.
- Supplied in 96% compostable eco-friendly packaging
- 2 year warranty (2nd year warranty only available after product registration)

- Barcode: 5035624026988

- Supports Android (4.1 or higher) & iOS (8 or higher)
- WiFi Standards: 802.11b/g/n
- Supports 2.4 GHz networks only
- Encryption: WPA/WPA2
- Application: SMART Connekt App
- UK socket input: 230-250V ~ 50/60Hz, 13A
- UK socket output: 13A maximum load
- Dimensions: 145 x 85 x 40mm
- Complies with UK Building Regulations 2010 approved document M, Volume 2, Section 4 for visual contrast
- CE Certified by SGS
- EN 55032:2015; EN 55035:2017; EN 300328:V2.1.1(2016-11); EN 301489-1:V2.2.1 (2016-11); EN 301489-17:V3.2.0 (2017-03); EN 62479:2010
- BS 1363-2:2016 + A1:2018

Packaging Specifications

- Packaging Type: Box
- Packaging Dimensions: 180 x 110 x 110mm

- Packaging Material:
- Packaging Weight: 0.125Kg
- Product & Packaging Weight: 0.375Kg
- Carton Dimensions: 550 x 220 x 360mm
- Carton Net Weight: 0.4Kg
- Carton Gross Weight: 8Kg
- Country of Origin: PR China
- Commodity Code: 8517620000

Whats In The Box

- 1 x Smart WiFi Socket
- 1 x Spacer
- 4 x Screws
- 2 x Screw caps
- 1 x Set-up guide

Product Information

- Barcode: 5035624026988
- Commodity Code: 8517620000
- Product Weight: 0.25