

LGS3 Range

Managed PoE+ Max Power Gigabit Switches Managed PoE+ Gigabit Switch Managed Gigabit Switches

LINKSYS®

FOR BUSINESS



Designed for security and speed, Linksys Managed Gigabit Switches provide a business-class network you can grow on

Network Expansion

Our managed switches include features for quickly expanding and growing your network. Multiple high-bandwidth trunks between switches enhance availability and redundancy. Spanning Tree Protocol (STP) and Storm Control features help control planned or inadvertent cable loops, so you can confidently build a mesh of switches and quickly expand your network to support your growing workforce.

Network Security

Unauthorised access to the network and mission-critical data is a constant concern. Our managed switches help secure networks through port authentication, requiring clients to authenticate themselves before any data is passed. Advanced DHCP snooping and IP-MAC binding functions ensure network integrity and help prevent network attacks.

Quality of Service (QoS)

Numerous QoS features ensure that traffic is prioritized properly to deliver the best possible user experience for real-time applications like voice and video along with bandwidth-intensive graphic/video file uploads and downloads. IGMP snooping limits IP multicast traffic to the ports that requested it, enabling the rest of the network to operate at peak efficiency.

Power over Ethernet Plus (PoE+)

Linksys managed switches support the latest 802.3at (PoE+) standards and provide up to double the power budget per Gigabit Ethernet port while offering 802.3af (PoE) backward-compatibility. Power over Ethernet reduces electrical wiring costs, simplifies installation, and supports network devices such as IP cameras and wireless access points in optimal indoor and outdoor locations.

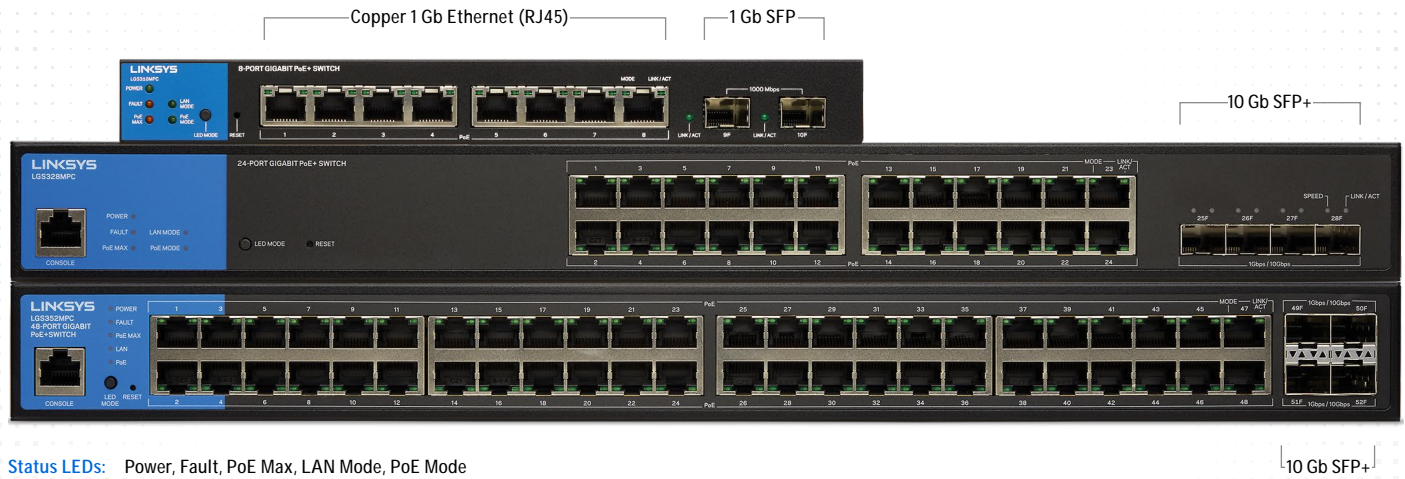
Key Features

- 8, 24 or 48 Gigabit Ethernet Ports.
- Dedicated SFP or SFP+ Uplink Ports.
- Advanced Network Security and QoS.
- Static Routing and IPv6 support.
- Ideal for surveillance cameras, access control, ProAV, projectors, access points, VoIP phones, and other demanding applications.
- Integrated Power over Ethernet Plus (Managed PoE+ Switches).

Managed PoE+ Max Power Gigabit Switches

LINKSYS

FOR BUSINESS



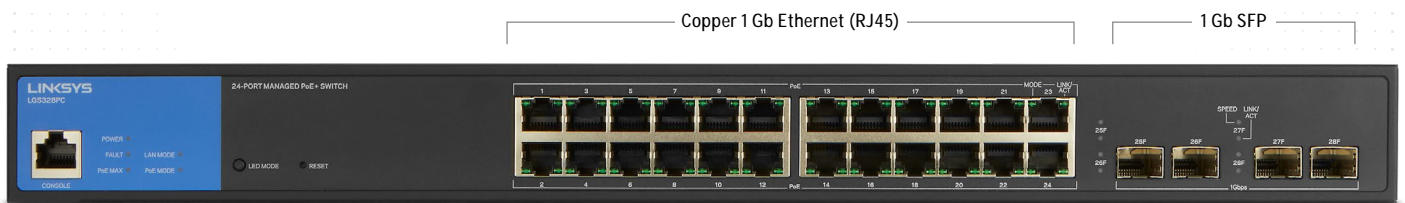
Status LEDs: Power, Fault, PoE Max, LAN Mode, PoE Mode

Hardware Specifications

	8-Port	24-Port	48-Port
Part #	LGS310MPC	LGS328MPC	LGS352MPC
Total System Ports	8 x Gb Ethernet + 2 x SFP	24 x Gb Ethernet + 4 x SFP+	24 x Gb Ethernet + 4 x SFP+
Copper Gigabit Ethernet Ports with PoE+ Support (RJ45)	Ports 1–8	Ports 1-24	Ports 1-48
1 Gb SFP Ports	Ports 9-10	—	—
10 Gb SFP+ Ports	—	Ports 25-28	Ports 49-52
CPU Memory DRAM	256 MB	512 MB	512 MB
Power Input	100–240 V / 50–60 Hz / 2.2 A	100–240 V / 50–60 Hz / 7 A	100–240 V / 50–60 Hz / 12 A
Power Dedicated to PoE+	110 W	410 W	740 W
Max Power Consumption with PoE+	133.77 W	500.46 W	885 W
Forwarding Rate	14.88 Mpps	95.4 Mpps	130.95 Mpps
Switching Capacity	20 Gbps	128 Gbps	176 Gbps
MAC Address	8K	16K	32K
Jumbo Frame	10 Kbytes	12 Kbytes	12 Kbytes
Fans	NA	2, 8200 rpm (at full speed)	3, 8200 rpm (at full speed)
Operating Temperature	0 to 40°C	0 to 50°C	0 to 50°C
Dimensions (WxHxD)	24.0 x 2.7 x 10.5 cm	43.8 x 4.5 x 25.5 cm	43.8 x 4.5 x 30.7 cm
Weight	1.57 kg	4.31 kg	5.249 kg

All models

- Green Power Mode EEE
- Operating Humidity: 10 to 90% RH
- Storage Humidity: 5 to 95% RH (non-condensing)
- Storage Temperature: -20 to 70°C
- Warranty Period: 5 years (most countries)*



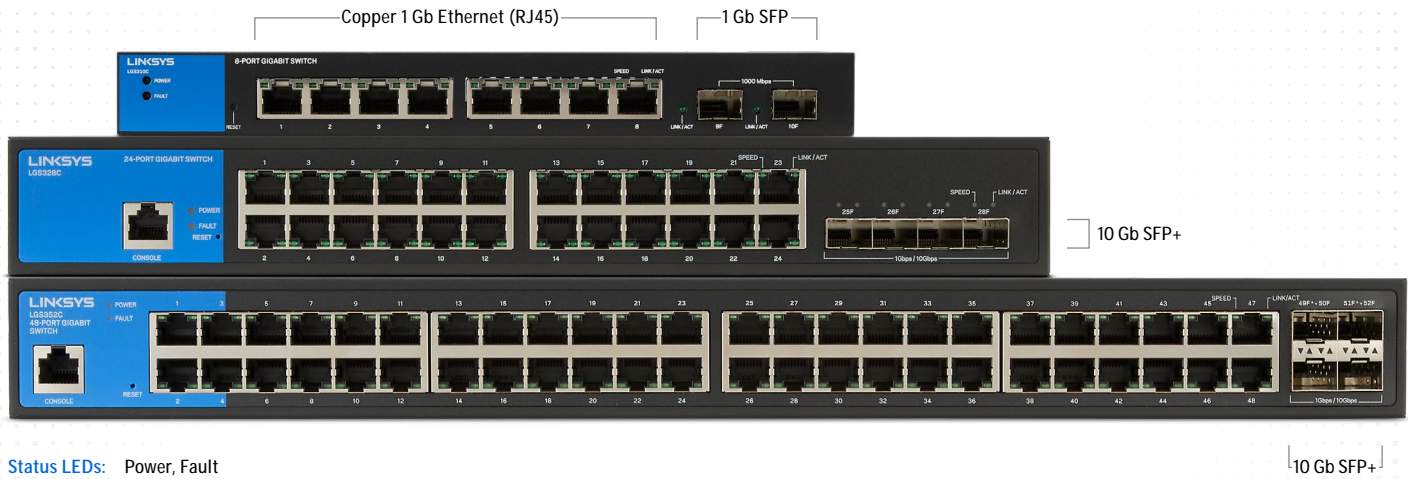
Status LEDs: Power, Fault, PoE Max, LAN Mode, PoE Mode

Hardware Specifications

24-Port

Part #	LGS328PC
Total System Ports	24 x Gb Ethernet + 4 x SFP
Copper Gigabit Ethernet Ports with PoE+ Support (RJ45)	Ports 1-24
1 Gb SFP Ports	Ports 25-28
10 Gb SFP+ Ports	—
CPU Memory DRAM	250 MB
Power Input	100–240 V / 50–60 Hz / 4 A
Power Dedicated to PoE+	250 W
Max Power Consumption with PoE+	305.24 W
Forwarding Rate	41.66 Mpps
Switching Capacity	56 Gbps
MAC Address	8K
Jumbo Frame	10 Kbytes
Fans	2, 8200 rpm (at full speed)
Operating Temperature	0 to 50°C
Dimensions (WxHxD)	43.8 x 25.5 x 4.5 cm
Weight	3.95 kg

- Green Power Mode EEE
- Operating Humidity: 10 to 90% RH
- Storage Humidity: 5 to 95% RH (non-condensing)
- Storage Temperature: -20 to 70°C
- Warranty Period: 5 years (most countries)*



Status LEDs: Power, Fault

Hardware Specifications

	8-Port	24-Port	48-Port
Part #	LGS310C	LGS328C	LGS352C
Total System Ports	8 x Gb Ethernet + 2 x SFP	24 x Gb Ethernet + 4 x SFP+	48 x Gb Ethernet + 4 x SFP+
Copper GE Ports (RJ45)	Ports 1–8	Ports 1-24	Ports 1-48
1 Gb SFP Ports	Ports 9-10	NA	NA
10G SFP+ Ports	NA	Ports 25-28	Ports 49-52
CPU Memory DRAM	256MB	512MB	512MB
Power Input	12V/1A	100–240V / 550–60 Hz / 50.7A	100–240V / 550–60 Hz / 51.5A
Max Power Consumption	6.54W	23.95W	43.87W
Forwarding Rate	14.88 Mpps	95.23 Mpps	130.95 Mpps
Switching Capacity	20 Gbps	128 Gbps	176 Gbps
MAC Address	8K	16K	32K
Jumbo Frame	10Kbytes	12Kbytes	12Kbytes
Fans	NA	NA	1, 8200 rpm (at full speed)
Operating Temperature	0 to 50°C	0 to 45°C	0 to 50°C
Dimensions (WxHxD)	24.0 x 2.7 x 10.5 cm	33.1 x 4.5 x 23.2 cm	43.8 x 4.5 x 25.5 cm
Weight	0.739 kg	2.522 kg	3.8783 kg

All models

- Green Power Mode EEE
- Operating Humidity: 10 to 90% RH
- Storage Humidity: 5 to 95% RH (non-condensing)
- Storage Temperature: -20 to 70°C
- Warranty Period: 5 years (most countries)*

Managed PoE+ Max Power Gigabit Switches

Managed PoE+ Gigabit Switch

Managed Gigabit Switches



Software Specifications

Number of VLANs

256 active VLANs (4,096 range).

VLAN

- Port-based and 802.1q VLANs
- Management VLAN
- Guest VLAN support

HOL Blocking

Head of line (HOL) blocking prevention.

Web User Interface

Built-in Web UI for easy browser-based configuration (HTTP/HTTPS).

SNMP : Version 1, 2c and 3.

Firmware Upgrade

Web browser upgrade (HTTP) and TFTP.

Port Mirroring

Traffic on multiple ports (up to 3 ports) can be mirrored to another port for analysis with a network analyzer.

RMON (1, 2, 3, 9)

Embedded remote monitoring (RMON) software agent support for enhanced traffic management, monitoring, and analysis.

SYSLOG

- Support log admin password/IP change activity enhancement
- Local logging: buffered/flash
- Remote logging: IPv4 / IPv6 / hostname (IPv4)

Ethernet OAM

- SFP information
- SFP+ DDM
- Cable diagnostic
- Port statistics

Other Management

- Telnet
- SSH
- DHCP client
- System log
- Configuration upload and backup via HTTP or TFTP
- PING
- Traceroute
- Dual images
- SNMP

Security

- 802.1x Radius authentication
- DHCP snooping
- IP-MAC binding
- Port security supports limited dynamic lock and locked MAC address (256 max entries per port)
- DOS Attack Prevention
- Port Isolation (Protected Ports)

Link Aggregation

IEEE 802.3ad LACP, up to 8 groups with up to 8 ports per group.

Bandwidth Control

Rate limit according to network speed, 12 kbps ~ 1000 Mbps: in steps of 16 kbps.

Storm Control

Support broadcast/unknown multicast/unknown unicast 16 kbps ~ 1000 Mbps: in steps of 16 kbps.

Loopback Detection

Detects and prevents loops in the network by sending out loop protocol packets and shutting down affected ports.

Spanning Tree

- IEEE 802.1d Spanning Tree
- IEEE 802.1w Rapid Spanning Tree
- IEEE 802.1s Multiple Spanning Trees (16 instances)

IGMP Snooping/Querier

- IGMP (v1/v2/v3) snooping provides for fast client joins and leaves of multicast streams and limits bandwidth-intensive video traffic to only the requestors
- Supports 256 multicast groups.

MLD Snooping/Querier

- Support v1
- MLD snooping fast leave (per-vlan)
- MLD querier
- Dynamic router port
- Static/forbidden router
- Report suppression

DHCP

- IPv4 DHCP Relay
- IPv4 DHCP Relay Statistics
- IPv4 DHCP Snooping

L3 Static Routing

- IPv4 (63 max entries)
- IPv6 (21 max entries)

QoS Priority Levels

8 hardware queues

Access Control List (ACL)

- Ingress
- MC Based ACL
- IPv4 Based ACL
- IPv6 Based ACL
- ACL Binding
- Action: permit/deny

Scheduling

Strict, Weighted Round Robin (WRR).

Class of Service

- Port-based
- 802.1p priority-based
- IPv4/v6 IP DSCP-based

Auto Voice VLAN

Voice traffic is automatically assigned by OUI to a voice-specific VLAN and treated with appropriate levels.

Standards

- 802.3 10Base-T Ethernet
- 802.3u 100Base-T Fast Ethernet
- 802.3ab 1000Base-T Gigabit Ethernet
- 802.3z Gigabit Ethernet
- 802.3x Flow Control
- 802.3ad
- 802.1d STP
- 802.1w RSTP
- 802.1s MSTP
- 802.1q VLAN
- 802.1p Priority QoS
- 802.1x Port Access Authentication
- 802.1ab Link Layer Discovery Protocol
- 802.3af PoE+
- 802.3at PoE
- 802.3az Energy Efficient Ethernet

Boxed Dimensions

Retail-Packaged Units

Casepacks

	Part#’s	Weight	W x H x D	Weight	W x H x D	Quantity
8-port PoE+ Max P	LGS310MPC-EU	1.87 kg	27.2 x 10 x 16.3 cm	9.86 kg	55 x 29 x 18.2 cm	5
8-port PoE+ Max P	LGS310C-EU	1.04 kg	27.2 x 10 x 16.3 cm	5.72 kg	55 x 29 x 18.2 cm	
24-port PoE+ Max P	LGS328MPC-EU	4.96 kg	53.8 x 10 x 37 cm	15.84 kg	55 x 39.5 x 33.5 cm	3
24-port PoE+	LGS328PC-EU	4.6 kg	53.8 x 10 x 37 cm	14.7 kg	55 x 39.5 x 33.5 cm	
24-port PoE+	LGS328C-EU	3 kg	39.8 x 10.5 x 33 cm	9.55 kg	41 x 33.5 x 36 cm	
48-port PoE+ Max P	LGS352MPC-EU	6 Kg	55 x 10 x 43.3 cm	12.85 Kg	57 x 45.5 x 23.5 cm	2
48-port PoE+	LGS352C-EU	4.38 kg	54.2 x 10.2 x 36.6 cm	9.3 kg	55 x 39 x 23.4 cm	

	UPC	EAN	Tarif code	Plug Types
8-Port PoE+ Max P	LGS310MPC-EU	745883814572	4260184670642	Euro (CEE 7/16) + British (BS1363)
8-Port PoE+	LGS310C-EU	745883814565	4260184670635	
24-Port PoE+ Max P	LGS328MPC-EU	745883814596	4260184670666	
24-Port PoE+	LGS328PC-EU	745883822294	4260184672394	
24-Port PoE+	LGS328C-EU	745883814589	4260184670659	
48-Port PoE+ Max P	LGS352MPC-EU	745883814629	4260184670680	
48-Port PoE+	LGS352C-EU	745883814602	4260184670673	
			851762000	



5-Year Limited Product Warranty

* 5 year warranty applies in all countries except: Australia and New Zealand – 2 year warranty.

Manufacturer Belkin International
 Brand Linksys
 Model Numbers LGS310MPC / LGS328MPC / LGS352MPC
 Description 8-, 24-, 48-port Managed PoE+ Max Power Gigabit Switches
 Model Numbers LGS328PC
 Description 24-port Managed PoE+ Gigabit Switch
 Model Numbers LGS310C / LGS328C / LGS352C
 Description 8-, 24-, 48-port Managed Gigabit Switches

Linksys UK Limited, Amsterdam Branch,
 Herikerbergweg 106, 1101 CM,
 Amsterdam Z.O.
 The Netherlands

Linksys UK Ltd.
 Regent Park, Booth Drive, Park Farm South,
 Wellingborough, Northants, NN8 6GR
 United Kingdom



Made in Taiwan

For additional product, pricing or general information [contact](#):

Learn more at:
linksys.com/gb/for-business

Linksys SMB Business Support:
[Contact Numbers & Operating Hours](#)



LINKSYS

FOR BUSINESS



Linksys Compatible SFP/SFP+ Transceivers & Cables

The easy way to build & expand your network

AddOn and Linksys are partnering to take your connectivity to the next level, as global industry leaders providing seamless compatibility between transceiver and wireless networking products.

Quality

We test each and every product in house, achieving a reliability rate of 99.89%.

Lead Times

24-to-48 hour from confirmation of order.

Technical Support

Follow the sun 24 x 7 x 365 from field engineers located globally.

Lifetime warranty

Addon provides lifetime warranty for no extra charge.

We test EVERYTHING before shipping

Testing is what sets us apart. Our proprietary **Data Traveler System™** creates a living manifest of our production process.

OEM Spec Testing
Every unit is custom code compatibility checked.

Environment Testing
Each part is tested, guaranteeing performance

Quality Control
All orders are double checked and verified before leaving our building

Description	Specifications	Part#
1000Base-LX SFP transceiver	SMF, 1310nm, 10km, LC	LACGLX-AO
1000Base-SX SFP transceiver	MMF, 850nm, 550m, LC	LACGSX-AO
10GBase-SR SFP+ transceiver	MMF, 850nm, 300m, LC, DOM	LACXGSR-AO
10GBase-LR SFP+ transceiver	SMF, 1310nm, 10km, LC, DOM	LACXGLR-AO
10GBase-CU SFP+ direct attach cable	Passive Twinax, 3m	LACXGDAC-AO

- [Product Datasheet >](#)
- [Product Datasheet >](#)
- [Product Datasheet >](#)
- [Product Datasheet >](#)
- [Product Datasheet >](#)

All SFP/SFP+ Transceivers as well as the Direct Attach Cable are interoperable with all Linksys Switches shown in this datasheet, with the exception of LGS310C & LGS310MPC which are ONLY interoperable with LACGLX-AO and LACGSX-AO

Contact Us

+44 1285 842070

salesupportemea@addonnetworks.com

Learn more at:

addonnetworks.com/products/dacs-aocs/linksys