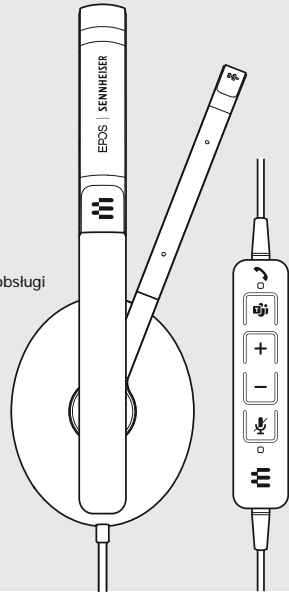


ADAPT 130T USB II | ADAPT 130T USB-C II
ADAPT 160T USB II | ADAPT 160T USB-C II
 USB headset certi ed for Microsoft® Teams

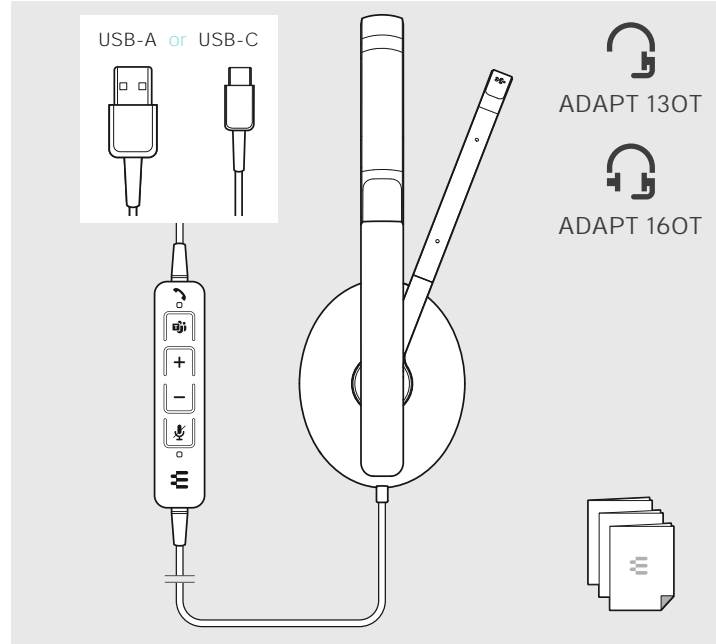
- EN Quick Guide
- DE Kurzanleitung
- FR Guide express
- IT Guida rapida
- ES Guía rápida
- PT Guia Rápido
- NL Mini handleiding
- EL
- DA Kvikvejledning
- SV Snabbguide
- FI Pikaopas
- PL Skrócona instrukcja obsługi
- RU
- ZH 快速入门指南
- TW 快速指南
- TR Hızlı Kılavuz
- JA クイックガイド
- ID Panduan Cepat
- KO 빠른 가이드



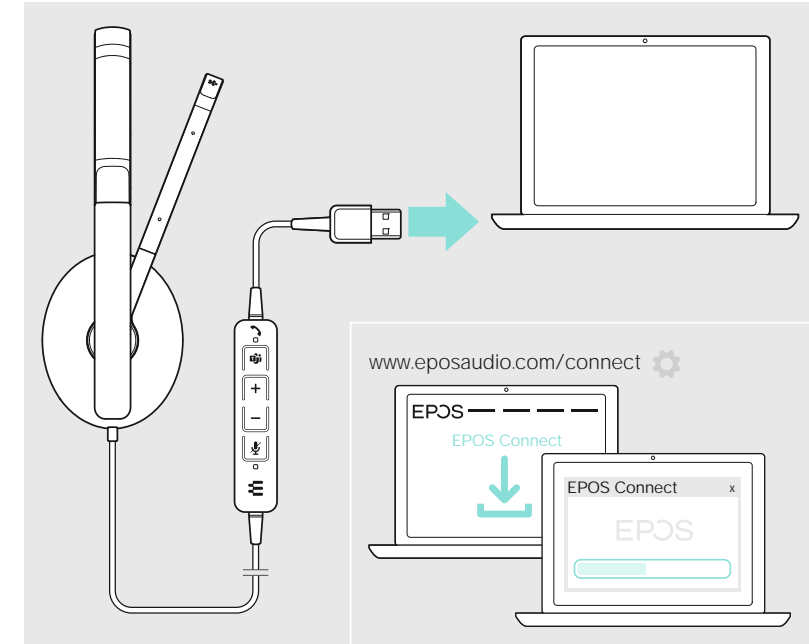
Model: SCWH18

Package contents | Lieferumfang | Contenu de la boîte | Contenuti della confezione |
 Contenido del embalaje | Conteúdo da embalagem | Inhoud verpakking |
 Pakkens indhold | Innehåll i förpackningen | Pakkauksen sisältö | Zawarto opakowania |
 | 套装内容 | 包装内容 | Kutunun içeriği | パッケージ内容 | Isi kemasan |

패키지 내용



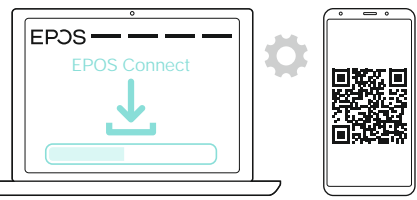
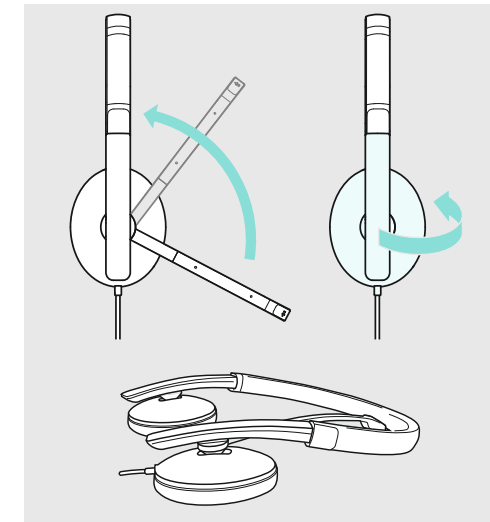
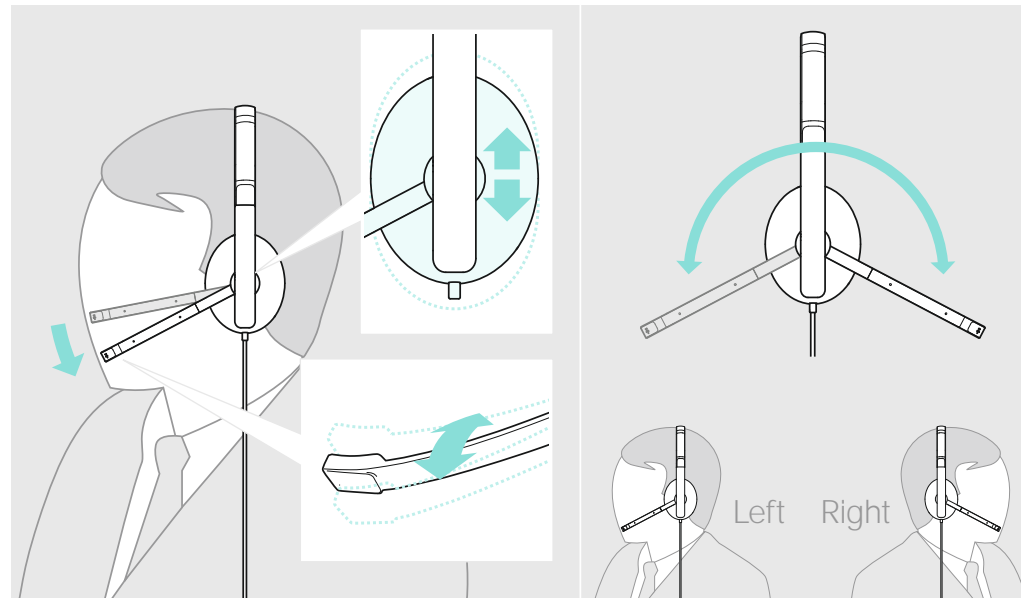
Connecting the headset | Headset anschließen | Connexion du casque microphone |
 Collegamento dell'headset | Conectar el headset | Ligar os microauscultadores | Headset aansluiten |
 | Tilslutning af hovedsættet | Anslut headset | Liitä kuulokemikrofoni |
 Podłączenie zestawu słuchawkowego | | 连接耳机 | 連接耳機 |
 Kulaklı in ba lanması | ヘッドセットを接続する | Menyambungkan headset | 헤드셋 연결하기



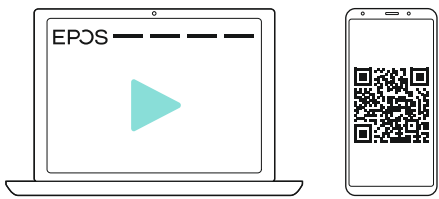
For product speci c software and
 rmware upgrade with EPOS Connect go to:
www.eposaudio.com/connect

Adjusting and wearing the headset | Headset anpassen und tragen | Ajuster et porter l'oreillette | Indossare e adattare l'headset |
 Ajustar y llevar el headset | Ajustar e utilizar o micro-auscultador | De headset aanpassen en dragen |
 Tilpasning og brug af hovedtelefonen | Justera och ta på headsetet | Kuulokemikrofonin säätö ja käyttäminen | Dostosowanie oraz noszenie zestawu
 słuchawkowego | | 头戴式耳机的适配与佩戴 | 頭戴式耳機的適配與佩戴 |
 Kulaklık setinin ayarlanması ve takılması | ヘッドセットの適応と装着 | Menyesuaikan dan memakai headset | 헤드셋 설정 및 착용

Transporting the headset | Headset transportieren |
 Transporter le casque-micro | Trasporto dell'headset |
 Transportar el headset | Transportar os micro-auscultadores |
 De headset transporteren | |
 Transport af headset | Transportera headset |
 Kuulokkeiden kuljettaminen | Transport zestawu słuchawkowego |
 | 携带耳机 | 攜帶耳機 |
 Kulaklık setini ta ma | ヘッドセット輸送時 | Membawa headset |
 헤드셋 휴대하기



For "How-to" videos go to:
www.eposaudio.com/how-to-adapt-100

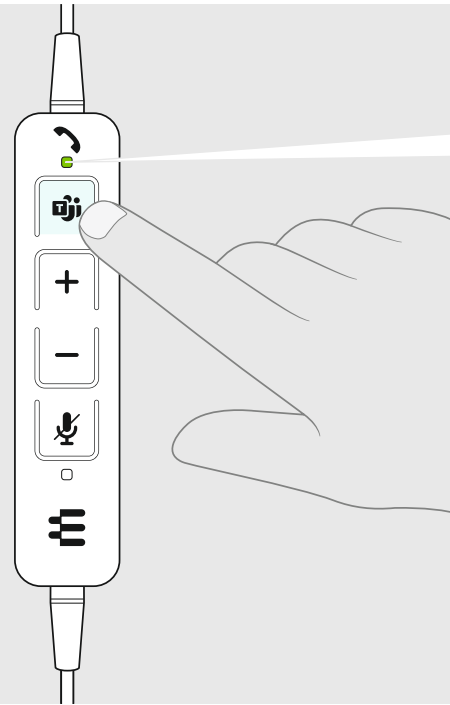
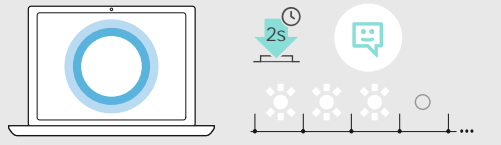


DSEA A/S
 Kongebakken 9, DK-2765 Smørum, Denmark
www.eposaudio.com

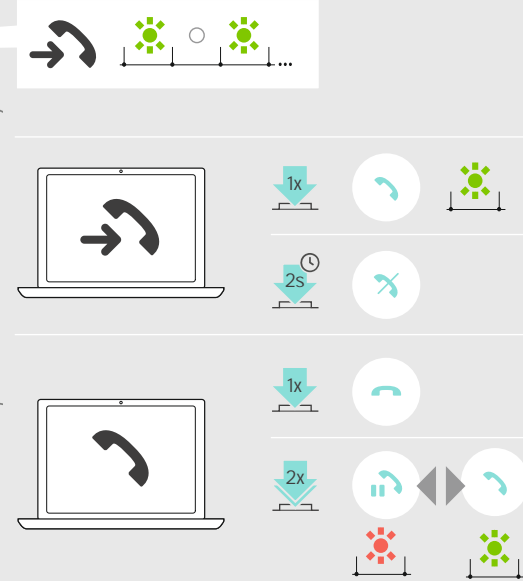
Microsoft Teams features



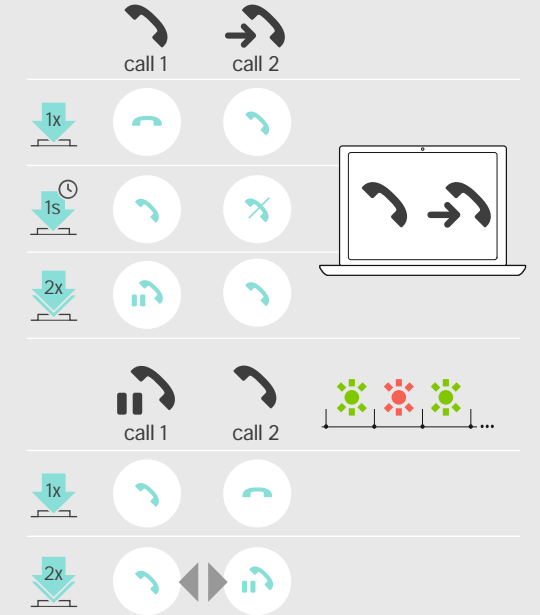
Invoking Microsoft Cortana



Handling calls



Managing multiple calls



Adjusting the volume | Lautstärke einstellen | Régler le volume |
 Impostazione del volume | Ajustar el volumen | Ajustar o volume |
 Volume instellen | Indstilling af lydstyrke |
 Ställ in volymen | Äänenvoimakkuuden säätäminen |
 Regulacja głośności |
 调节音量 | 調節音量 | Ses düzeyini ayarla | 音量を調節する |
 Mengatur volume suara | 볼륨 조절하기

Muting the microphone | Mikrofon stummschalten |
 Couper le microphone | Silenziamento del microfono |
 Silenciar el micrófono | Activar o modo de silencio no microfone |
 Mikrofoon op mute schakelen |
 Frakblönding af lyd på mikrofon | Stäng av mikrofonen |
 Mikrofonin mykistämminen | Wyciszenie mikrofonu |
 麦克风静音 | 調節音量 | Mikrofonu kapat |
 마이크의ミュ트 | Menonaktifkan suara mikrofon | 마이크 음소거

Replacing the ear pad | Ohrpolster austauschen |
 Remplacer le coussinet d'oreille | Sostituzione dei cuscinetti
 auricolari | Cambiar las almohadillas | Substituir as almofadas |
 Oorkussens vervangen |
 Udskiftning af ørepolstringer | Byt öronkuddar |
 Korvapehmusteiden vaihto | Wymiana poduszek słuchawkowych |
 更换耳垫 | 更換耳機襯墊 |
 Kulak yastınnın değiştirilmesi | İyarpadını değiştirmek |
 Mengganti Bantalan Telinga | 이어패드 교체하기

Cleaning the product | Produkt reinigen | Nettoyage du produit |
 Pulizia del prodotto | Limpieza del producto | Limpar o produto |
 Het product reinigen |
 Rengöring af produktet | Rengöra produkten | Tuotteen puhdistus |
 Czyszczenie produktu |
 Urünün temizlenmesi | 製品のクリーニング | 清洁产品 | 清潔本產品 |
 Membersihkan produk | 제품 청소

