

# Managed PoE+ Gigabit Switches

LINKSYS®

FOR BUSINESS



Designed for security and speed, Linksys Managed Gigabit PoE+ Switches provide a business-class network you can grow on.

## Power over Ethernet Plus (PoE+)

Linksys managed switches support the latest 802.3at (PoE+) standards and provide up to double the power budget per Gigabit Ethernet port while offering 802.3af (PoE) backward-compatibility. Power over Ethernet reduces electrical wiring costs, simplifies installation, and supports network devices such as IP cameras and wireless access points in optimal indoor and outdoor locations.

## Network Expansion

Our managed switches include features for quickly expanding and growing your network. Multiple high-bandwidth trunks between switches enhance availability and redundancy. Spanning Tree Protocol (STP) and Storm Control features help control planned or inadvertent cable loops, so you can confidently build a mesh of switches and quickly expand your network to support your growing workforce.

## Network Security

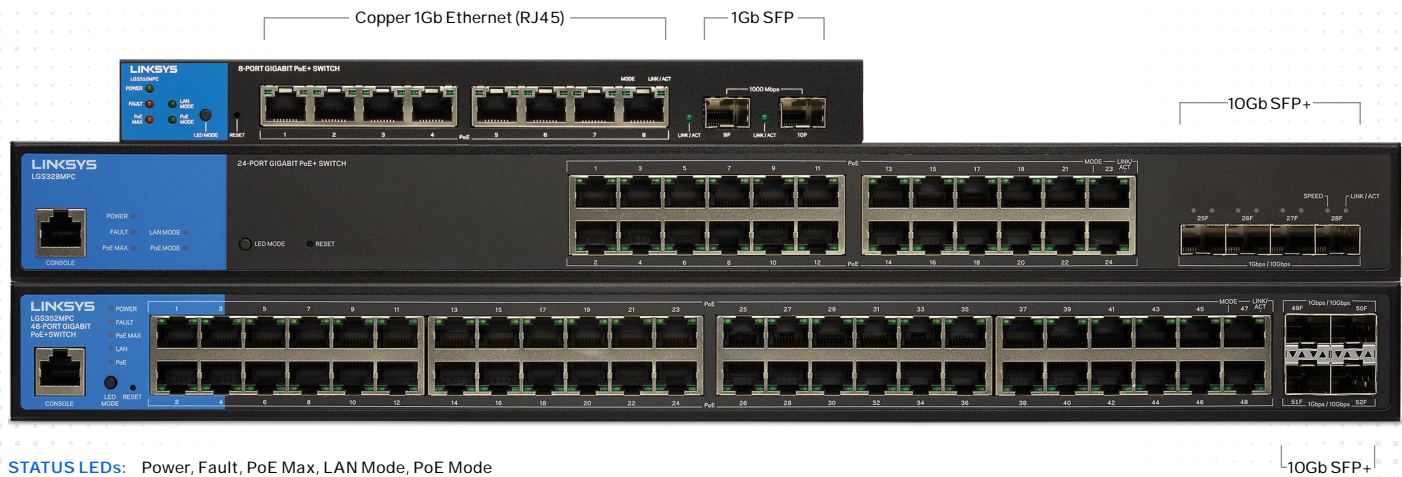
Unauthorised access to the network and mission-critical data is a constant concern. Our managed switches help secure networks through port authentication, requiring clients to authenticate themselves before any data is passed. Advanced DHCP snooping and IP-MAC binding functions ensure network integrity and help prevent network attacks.

## Quality of Service (QoS)

Numerous QoS features ensure that traffic is prioritized properly to deliver the best possible user experience for real-time applications like voice and video along with bandwidth-intensive graphic/video file uploads and downloads. IGMP snooping limits IP multicast traffic to the ports that requested it, enabling the rest of the network to operate at peak efficiency.

## Key Features

- 8, 24 or 48 Gigabit Ethernet Ports.
- Integrated Power over Ethernet Plus (PoE+).
- Dedicated SFP or SFP+ Uplink Ports.
- Advanced Network Security and QoS.
- Static Routing and IPv6 support.
- Ideal for surveillance cameras, access control, ProAV, projectors, access points, VoIP phones, and other demanding applications.



**STATUS LEDs:** Power, Fault, PoE Max, LAN Mode, PoE Mode

## Hardware Specifications

	8-Port	24-Port	48-Port
Part #	LGS310MPC	LGS328MPC	LGS352MPC
Total System Ports	8 Gb Ethernet + 2 SFP	24 Gb Ethernet + 4 SFP+	48 Gb Ethernet + 4 SFP+
Copper Gigabit Ethernet Ports with PoE+ Support (RJ45)	Ports 1-8	Ports 1-24	Ports 1-48
1 Gb SFP Ports	Ports 9-10	—	—
10 Gb SFP+ Ports	—	Ports 25-28	Ports 49-52
CPU Memory DRAM	256 MB	512 MB	512 MB
Power Input	100-240 V / 50-60 Hz / 2.2 A	100-240 V / 50-60 Hz / 7 A	100-240 V / 50-60 Hz / 12 A
Power Dedicated to PoE+	110 W	410 W	740 W
Max Power Consumption with PoE+	133.77 W	500.46 W	885 W
Green Power Mode	EEE	EEE	EEE
Forwarding Rate	14.88 Mpps	95.4 Mpps	130.95 Mpps
Switching Capacity	20 Gbps	128 Gbps	176 Gbps
MAC Address	8K	16K	32K
Jumbo Frame	10 Kbytes	12 Kbytes	12 Kbytes
Fans	NA	2, 8200 rpm (at full speed)	3, 8200 rpm (at full speed)
Operating Temperature	0 to 40°C	0 to 50°C	0 to 50°C

### All models

- Operating Humidity: 10 to 90% RH
- Storage Humidity: 5 to 95% RH (non-condensing)
- Storage Temperature: -20 to 70°C
- Warranty Period: 5 years (most countries)\*

# Managed PoE+ Gigabit Switches



## Software Specifications

### Number of VLANs

256 active VLANs (4,096 range).

### VLAN

- Port-based and 802.1q VLANs
- Management VLAN
- Guest VLAN support

### HOL Blocking

Head of line (HOL) blocking prevention.

### Web User Interface

Built-in Web UI for easy browser-based configuration (HTTP/HTTPS).

SNMP : Version 1, 2c and 3.

### Firmware Upgrade

Web browser upgrade (HTTP) and TFTP.

### Port Mirroring

Traffic on multiple ports (up to 3 ports) can be mirrored to another port for analysis with a network analyzer.

### RMON (1, 2, 3, 9)

Embedded remote monitoring (RMON) software agent support for enhanced traffic management, monitoring, and analysis.

### SYSLOG

- Support log admin password/IP change activity enhancement
- Local logging: buffered/flash
- Remote logging: IPv4 / IPv6 / hostname (IPv4)

### Ethernet OAM

- SFP information
- SFP+ DDM
- Cable diagnostic
- Port statistics

### Other Management

- Telnet
- SSH
- DHCP client
- System log
- Configuration upload and backup via HTTP or TFTP
- PING
- Traceroute
- Dual images
- SNMP

### Security

- 802.1x Radius authentication
- DHCP snooping
- IP-MAC binding
- Port security supports limited dynamic lock and locked MAC address (256 max entries per port)
- DOS Attack Prevention
- Port Isolation (Protected Ports)

### Link Aggregation

IEEE 802.3ad LACP, up to 8 groups with up to 8 ports per group.

### Bandwidth Control

Rate limit according to network speed, 12 kbps - 1000 Mbps: in steps of 16 kbps.

### Storm Control

Support broadcast/unknown multicast/ unknown unicast 16 kbps - 1000 Mbps: in steps of 16 kbps.

### Loopback Detection

Detects and prevents loops in the network by sending out loop protocol packets and shutting down affected ports.

### Spanning Tree

- IEEE 802.1d Spanning Tree
- IEEE 802.1w Rapid Spanning Tree
- IEEE 802.1s Multiple Spanning Trees (16 instances)

### IGMP Snooping/Querier

- IGMP (v1/v2/v3) snooping provides for fast client joins and leaves of multicast streams and limits bandwidth-intensive video traffic to only the requestors
- Supports 256 multicast groups.

### MLD Snooping/Querier

- Support v1
- MLD snooping fast leave (per-vlan)
- MLD querier
- Dynamic router port
- Static/forbidden router
- Report suppression

### DHCP

- IPv4 DHCP Relay
- IPv4 DHCP Relay Statistics
- IPv4 DHCP Snooping

### L3 Static Routing

- IPv4 (63 max entries)
- IPv6 (21 max entries)

### QoS Priority Levels

8 hardware queues

### Access Control List (ACL)

- Ingress
- MC Based ACL
- IPv4 Based ACL
- IPv6 Based ACL
- ACL Binding
- Action: permit/deny

### Scheduling

Strict, Weighted Round Robin (WRR).

### Class of Service

- Port-based
- 802.1p priority-based
- IPv4/v6 IP DSCP-based

### Auto Voice VLAN

Voice traffic is automatically assigned by OUI to a voice-specific VLAN and treated with appropriate levels.

### Standards

- 802.3 10Base-T Ethernet
- 802.3u 100Base-T Fast Ethernet
- 802.3ab 1000Base-T Gigabit Ethernet
- 802.3z Gigabit Ethernet
- 802.3x Flow Control
- 802.3ad
- 802.1d STP
- 802.1w RSTP
- 802.1s MSTP
- 802.1q VLAN
- 802.1p Priority QoS
- 802.1x Port Access Authentication
- 802.1ab Link Layer Discovery Protocol
- 802.3af PoE+
- 802.3at PoE
- 802.3az Energy Efficient Ethernet



5-Year Limited Product Warranty

## Dimensions

### Product

8-Port	Weight: ..... 0,64 kg Depth ..... 10,50 cm Width: ..... 24 cm Height: ..... 2,67 cm
24-Port	Weight: ..... 4,31 kg Depth ..... 25,51 cm Width: ..... 43,79 cm Height: ..... 4,5 cm
48-Port	Weight: ..... 5,25 kg Depth ..... 30,71 cm Width: ..... 43,79 cm Height: ..... 4,5 cm

### Retail-Packaged Unit

8-Port	Weight: ..... 1,87 kg Depth ..... 16,3 cm Width: ..... 27,5 cm Height: ..... 10,5 cm
24-Port	Weight: ..... 4,96 kg Depth ..... 36,7 cm Width: ..... 53,8 cm Height: ..... 10 cm
48-Port	Weight: ..... 6,01 kg Depth ..... 43,3 cm Width: ..... 55 cm Height: ..... 10 cm

### Case Pack Dimensions

8-Port	Weight (*PL) : ..... 9,86 kg Depth (*PL) ..... 18,22 cm Width (*PL) ..... 55 cm Height (*PL) ..... 29 cm Quantity (*PL) ..... 5 per pack
24-Port	Weight (*PL) : ..... 15,84 kg Depth (*PL) ..... 33,5 cm Width (*PL) ..... 55 cm Height (*PL) ..... 39,5 cm Quantity (*PL) ..... 3 per pack
48-Port	Weight (*PL) : ..... 12,86 kg Depth (*PL) ..... 23,5 cm Width (*PL) ..... 56,7 cm Height (*PL) ..... 45,5 cm Quantity (*PL) ..... 2 per pack

Manufacturer ..... Belkin International  
Brand ..... Linksys  
Model Number ..... LGS310MPC / LGS328MPC / LGS352MPC  
Description ..... 8-, 24-, 48-port Managed PoE+ Gigabit Switches

Linksys,  
Belkin BV, Plaza Arena,  
Jupiter Building, Herikerbergweg 106,  
1101 CM, Amsterdam Z.O.,  
The Netherlands

Linksys,  
Belkin Limited, Unit 1, Regent Park,  
Booth Drive, Park Farm South,  
Wellingborough, Northants, NN8 6GR,  
United Kingdom

	Part Number	Tarif code	UPC	EAN	Plug Type
8-Port	LGS310MPC-EU	851762000	745883814572	4260184670642	Euro (CEE 7/16) + British (BS1363)
24-Port	LGS328MPC-EU	851762000	745883814596	4260184670666	Euro (CEE 7/16) + British (BS1363)
48-Port	LGS352MPC-EU	851762000	745883814629	4260184670680	Euro (CEE 7/16) + British (BS1363)

© 2021 Linksys USA, Inc., and/or its affiliates. All rights reserved.  
Linksys and product names and logos are trademarks of Linksys USA, Inc. Third party trademarks mentioned are the property of their respective owners.

## Contact

For additional product, pricing or general information contact:

Learn more at:  
[linksys.com/gb/for-business](https://linksys.com/gb/for-business)

Linksys SMB Business Support:  
[Contact Numbers & Operating Hours](#)