

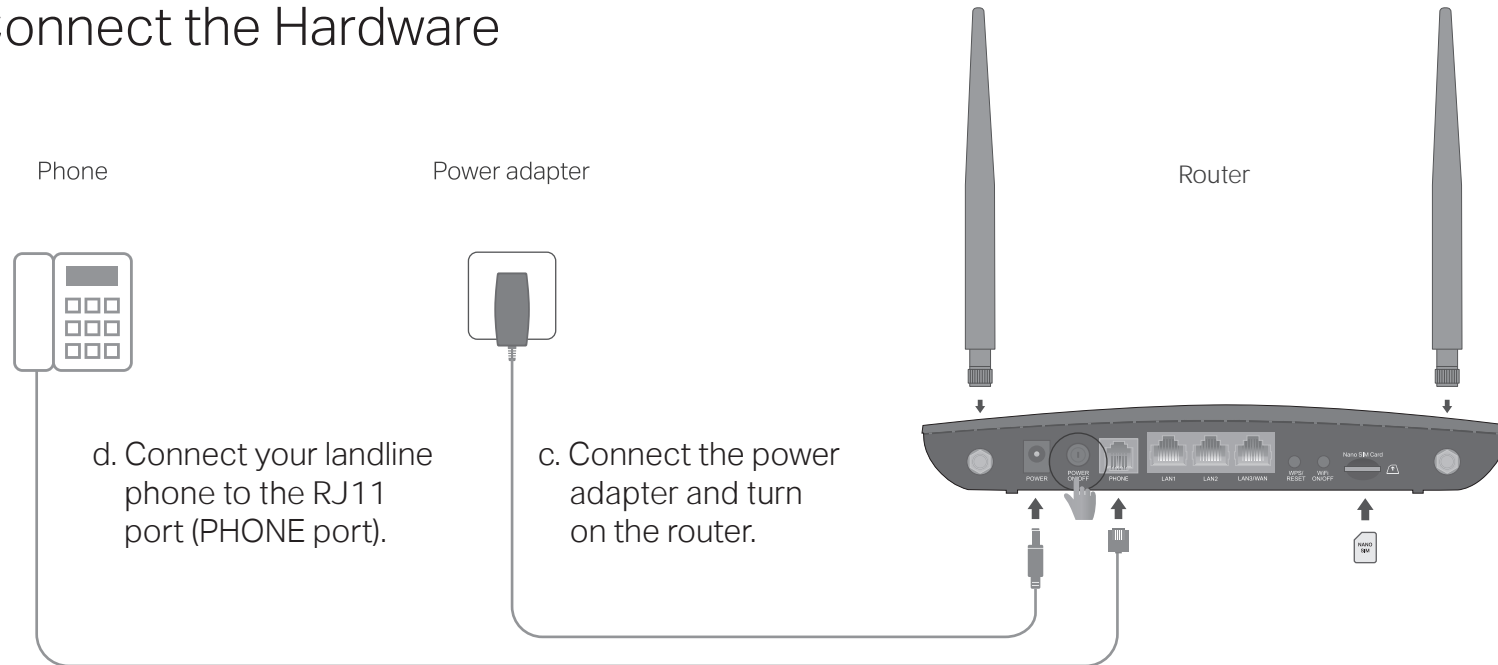


# Quick Installation Guide

Wireless 4G LTE Telephony Router

Images may differ from actual products.  
©2022 TP-Link 7106509960 REV2.0.0

## 1. Connect the Hardware



d. Connect your landline phone to the RJ11 port (PHONE port).


c. Connect the power adapter and turn on the router.

a. Install the antennas and position them upwards.

b. With the gold contacts facing down, insert the nano SIM card into the slot until you hear a click.




## 2. Verify the Hardware Connection

Check the following LEDs' status. If the Internet LED  is on, your router is connected to the internet successfully.



Note: If the Internet LED does not turn on, please refer to Need Help? > Q2 on the back page.

For better internet connection, make sure 2 or 3 bars of the Signal Strength LED  are lit. Otherwise, try relocating the router to a spot that may receive a stronger mobile network signal, such as near a window.

## 3. Enjoy the Internet

### • Wired

Connect your computer to the router's LAN port via an Ethernet cable.

### • Wireless

a. Find the SSID (network name) and wireless password printed on the label at the bottom of the router.

Note: For a dual-band router, you can find two default SSIDs. Choose one to join the Wi-Fi.



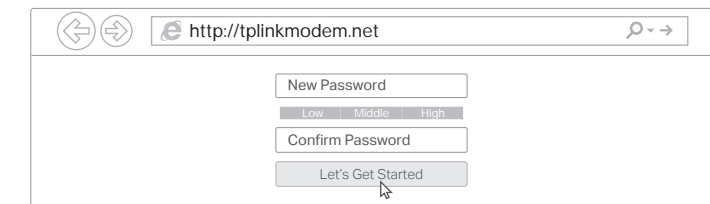
b. Click the network icon of your computer or go to Wi-Fi settings of your smart device, and then select the SSID to join the network.

## 4. Customize the 4G LTE Router

1. Make sure your computer is connected to the router (wired or wireless).

2. Launch a web browser and type in <http://tplinkmodem.net> or <http://192.168.1.1>. Create a new password for future logins.

Note: If the login page does not appear, please refer to Q1 of Need Help? in this guide.



3. Follow the step-by-step instructions of the **Quick Setup** to complete the initial configuration.

Note: The router can also be used (or configured) in Wireless Router Mode for DSL/Cable connections. For more advanced configurations, please refer to the user guide on TP-Link official website at [www.tp-link.com](http://www.tp-link.com).

# Configure Telephony Settings

By default, the router uses traditional voice services over 3G network.

- **To make / receive voice calls over LTE network (VoLTE)**
  - a. Launch a web browser, log in to the web management page at <http://tplinkmodem.net>.
  - b. Go to **Advanced > Telephony > Telephony Mode**, Select **VoLTE**.
  - c. In **VoLTE** section, toggle on this feature and click **Save**.

Note: To use this feature, your carrier must also support VoLTE calls. If you are not sure about it, contact your carrier for help.

- **To make / receive voice calls over internet (VoIP)**
  - a. Launch a web browser, log in to the web management page at <http://tplinkmodem.net>.
  - b. Go to **Advanced > Telephony > Telephony Mode**, Select **VoIP**.
  - c. In **VoIP** section, click **Add** to enter your telephone information and click **Save**.

Note: If your telephony provider is not listed in **Telephony Provider**, select **Other** then contact your carrier to get the necessary information.

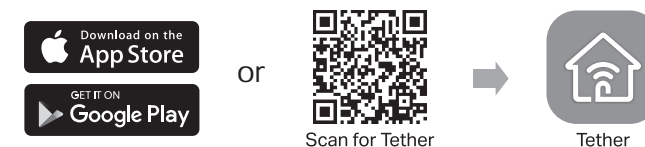
# Configure the router via Tether App

The TP-Link Tether provides a simple, intuitive way to access and manage your router.



## How to begin?

1. Download the TP-Link Tether app.



2. Open the Tether app and log in with your TP-Link ID.

Note: If you don't have an account, create one first.

3. Tap the **+** icon in the Tether app and select **3G/4G Router**. Follow the steps to complete the setup and connect to the internet.

# LED Indicators

LED	Status	Indication
Power	On Flashing Off	Power is on. The system is starting up or firmware upgrade is in progress. Power is off.
Internet	On Off	Internet connection is available. No Internet connection.
Wi-Fi	On Flashing Off	Wi-Fi is enabled. WPS connection is in progress. Wi-Fi is disabled.
LAN	On Off	A device is connected to the LAN port. No device is connected to the LAN port.
PHONE	On Flashing Off	The phone is off-hook. The phone is ringing. The phone is on-hook.
Signal Strength	On Off	Indicates the signal strength of the mobile internet network. More lit bars indicates a better signal strength. There is no mobile internet signal.

# Need Help?

## Q1. What should I do if I cannot access the web management page?

- If the computer is set to a static IP address, change its settings to obtain an IP address automatically.
- Make sure <http://tplinkmodem.net> or <http://192.168.1.1> is correctly entered in the web browser.
- Use another web browser and try again.
- Reboot your router and try again.
- Disable and enable the active network adapter in use.

## Q2. What should I do if I cannot access the internet?

- Verify that your SIM card is an LTE or WCDMA card.
- Verify that your SIM card is in your internet service provider's service area.
- Verify that your SIM card has sufficient credit.
- Launch a web browser, log in to the web management page, and check the following:
  - 1) Go to **Advanced > Network > Internet** to verify the parameters provided by your ISP are correctly entered. If the parameters are incorrect, click **Create Profile** and enter the correct parameters, then select the new profile from the **Profile Name** list.
  - 2) Go to **Advanced > Network > PIN Management** to verify if PIN is required. If it is, enter the correct PIN provided by your ISP, and click **Save**.
  - 3) Go to **Advanced > Network > Data Settings** to verify if the **Total/Monthly Used** exceeds the **Total/Monthly Allowance**. If it does, click **Correct** and set **Total/Monthly Used** to 0 (zero), or disable **Data Limit**.
  - 4) Go to **Advanced > Network > Internet** to verify that **Mobile Data** is enabled. If it is not, enable it to access the internet.
  - 5) Confirm with your ISP if you are in a roaming service area. If you are, go to **Advanced > Network > Internet** to enable **Data Roaming**.

## Q3. How do I restore the router to its factory default settings?

- With the router powered on, press and hold the **WPS/RESET** button on the rear panel of the router until the Power LED starts flashing, then release the button. Wait while the router resets.
- Log in to the web management page of the router, and go to **Advanced > System Tools > Backup & Restore**, click **Factory Restore** and wait until the reset process is complete.

## Q4. What should I do if I forget my web management page password?

- Refer to Q3 to reset the router, then create a new password to log in.

## Q5. What should I do if I forget my wireless network password?

- The default wireless password is printed on the product label of the router.
- Connect a computer directly to the router using an Ethernet cable. Log in to the router's web management page and go to **Basic > Wireless** to retrieve or reset your wireless password.

### Safety Information

- Keep the device away from water, fire, humidity or hot environments.
- Do not attempt to disassemble, repair, or modify the device. If you need service, please contact us.
- Do not use damaged charger or USB cable to charge the device.
- Do not use any other chargers than those recommended.
- Do not use the device where wireless devices are not allowed.
- Adapter shall be installed near the equipment and shall be easily accessible.

For technical support, replacement services, user guides, and other information, please visit <https://www.tp-link.com/support>, or simply scan the QR code.

To communicate with TP-Link users or engineers, please join the TP-Link Community at <https://community.tp-link.com>.

