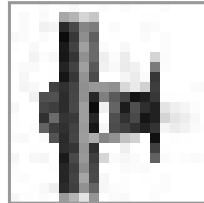
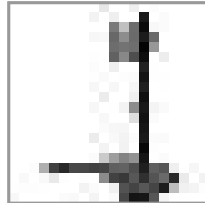
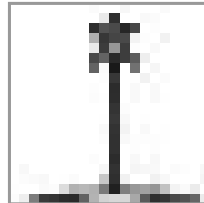
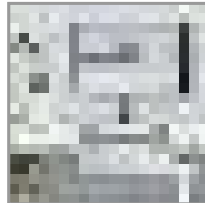


Single-Display Desktop Monitor Stand for 13" to 27" Flat-Screen Displays

MODEL NUMBER: DDR1327SE



Mounts your 13 to 27 in. monitor on a single base to free up valuable space on your home or office desk, table or work area.

Features

Mounts Your Monitor on a Base Frees up valuable workspace on your desk, table or workstation Fits most flat-panel displays from 13 to 27 in. Mount adjusts independently for viewing angle and height Ideal for home and office use

Convenient One-Touch Adjustment 180° swivel and -45° to +45° tilt capability provides comfortable viewing Full 360° rotation for viewing in portrait or landscape orientation

Durable Metal Construction Mount supports up to 22 lbs (9.9 kgs) Scratch-resistant powder-coated finish blends with any décor Mounting hardware included

VESA Compliance Supports the following VESA mounting hole patterns: 75 x 75 mm, 75 x 100 mm, 100 x 75 mm, and 100 x 100 mm

Highlights

- Monitor mount with heavy-duty base remains stable on your desk during adjustment
- -45° to +45° tilt, -45° to +45° swivel and 360° rotation helps you find the perfect angle
- Durable steel construction blends into any décor and supports up to 22 lbs (9.9 kgs)
- Display cables attach to pole to reduce clutter and keep cords organized
- VESA compliance ensures compatibility with 75x75 and 100x100 mounting patterns

Applications

- Lift a monitor above your standing desk or workstation to free up valuable surface space
- Swivel, tilt and/or rotate your screen for the most comfortable viewing angle

System Requirements

- Flat-screen monitor from 13 to 27 in.

Package Includes

- VESA plate assembly
- Pole
- Base
- Pole cable guide
- Base collar
- Hex key, 3 mm
- Hex key, 5 mm
- Hex key, 6 mm
- (4) M4 x 12 screws
- (4) M5 x 12 screws
- (4) D5 washers
- Owner's manual

Specifications

OVERVIEW	
UPC Code	037332257826
Device Compatibility	Monitor/HDTV



Powering Business Worldwide



PHYSICAL	
Color	Black
Material of Construction	Steel
VESA Pattern (mm)	100x100; 100x75; 75x100; 75x75
Motion	Full
Mounting Location	Desktop
Degrees of Motion	-45/+45 Tilt; 180 Swivel; 360 Rotate
Minimum Screen Size (in.)	13
Minimum Screen Size (cm)	33
Maximum Screen Size (in.)	27
Maximum Screen Size (cm)	68.6
Maximum Weight Capacity (lbs.)	22
Maximum Weight Capacity (kg)	10
Number of Displays	1
Shipping Dimensions (hwd / in.)	4.10 x 13.80 x 13.30
Shipping Weight (kg)	3.90
Unit Dimensions (hwd / in.)	18.300 x 17.100 x 12.400
Unit Dimensions (hwd / cm)	46.5 x 43.4 x 31.5
Unit Weight (lbs.)	5.50
Unit Weight (kg)	2.49
Assembly Required	Yes
FEATURES & SPECIFICATIONS	
Antimicrobial	No
Cord Management	Yes
Tools Necessary	Yes
Security Lock	No
STANDARDS & COMPLIANCE	
Product Compliance	RoHS
WARRANTY & SUPPORT	
Product Warranty Period (Worldwide)	5-year limited warranty



Powering Business Worldwide



1000 Eaton Boulevard
Cleveland, OH 44122
United States
<https://tripplite.eaton.com>

© 2024 Eaton. All Rights Reserved.
Eaton is a registered trademark. All other trademarks
are the property of their respective owners.