

Installation Guide

TL-POE150S (PoE Injector)
TL-POE10R (PoE Splitter)



For technical support and other information, please visit <http://www.tp-link.com/support>, or simply scan the QR code

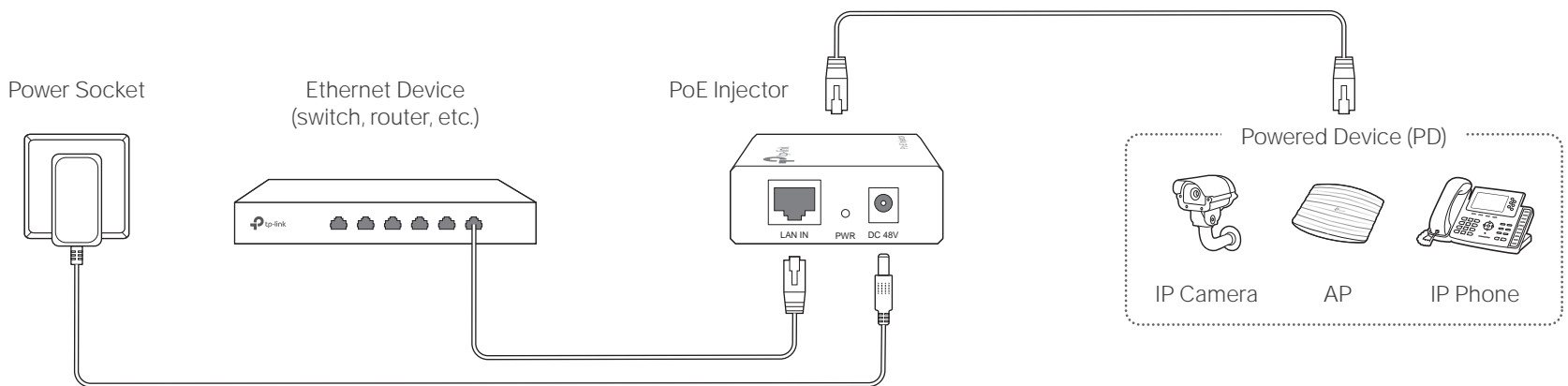
7106507762 REV5.0.1

Some models featured in this guide may be unavailable in your country or region. For local sales information, visit <http://www.tp-link.com>.

Package Contents: PoE Injector or Splitter, Ethernet Cable, Installation Guide, Power Adapter (for PoE Injector) or Power Cable (for PoE Splitter)

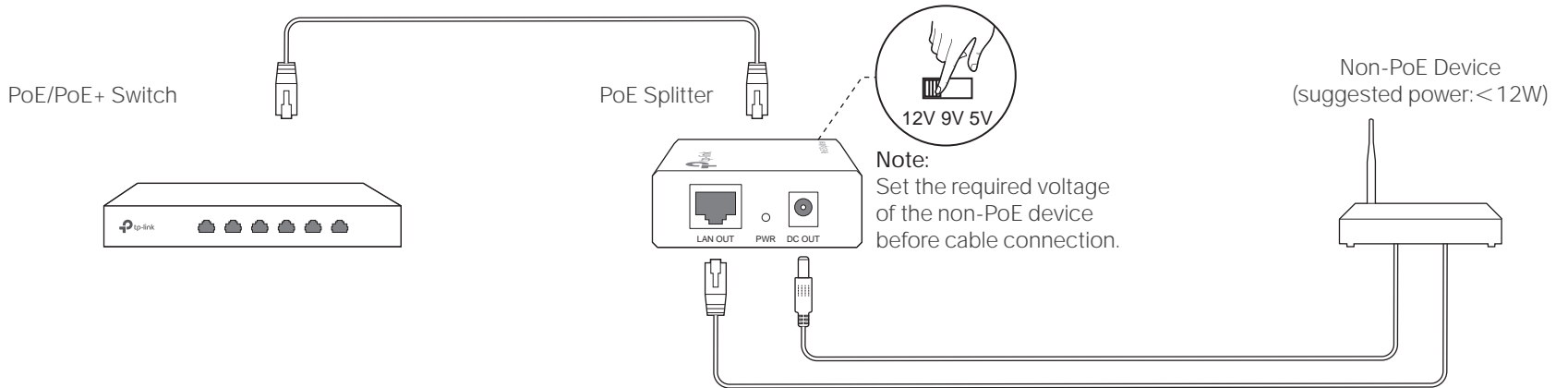
PoE Injector Only

The PoE Injector supplies steady power and data connectivity to a powered device such as PoE IP Camera, PoE AP and PoE IP Phone through an Ethernet cable.



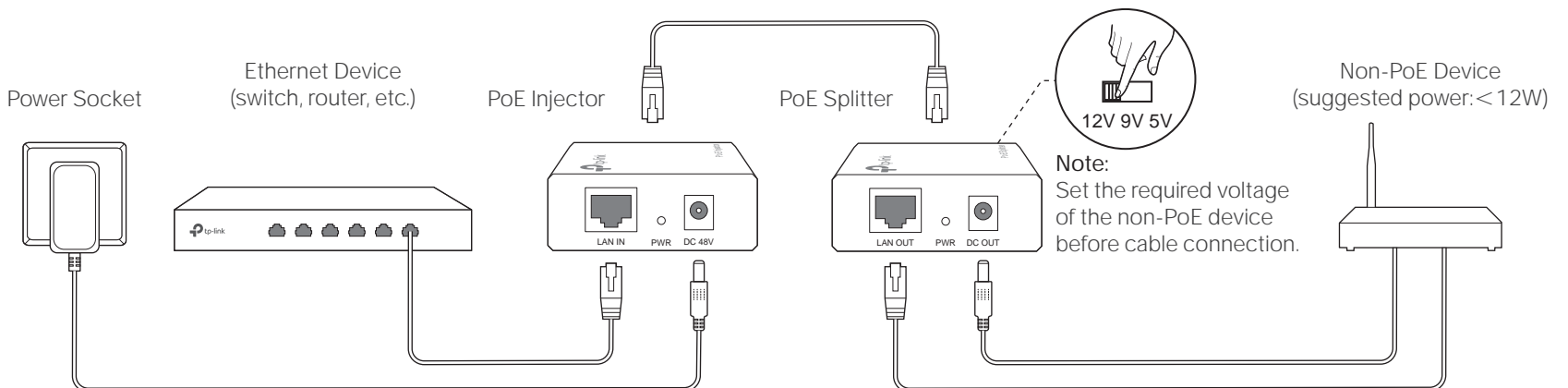
PoE Splitter Only

The PoE Splitter can be used with a PoE/PoE+ switch to deliver direct current (DC) power and data to a Non-PoE device.



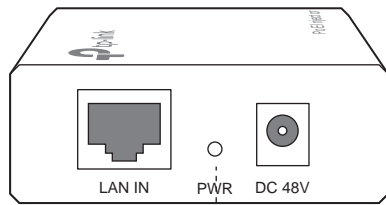
PoE Injector & Splitter

The PoE injector and PoE splitter can be used as a kit to supply power and transmit data to a Non-PoE device.



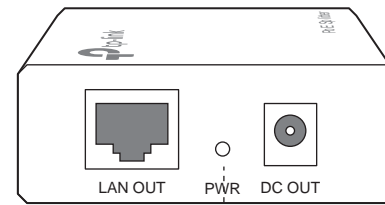
Power LED Explanation

PoE Injector:



On: Supplying power normally
Flashing: No PD is connected/Supplying power abnormally
Off: No power supply

PoE Splitter:



On: Connected to PSE correctly
Off: No PSE is connected

Specifications

General Specifications

| | |
|------------|--|
| Standards | IEEE 802.3i, IEEE802.3u, IEEE 802.3ab, IEEE 802.3af |
| LED | PWR |
| Cable Type | UTP/STP of Cat. 5 or above (based on the standards that the connected devices comply with) |
| Ports | <p>PoE Injector:</p> <ul style="list-style-type: none"> 10/100/1000Mbps Auto-Negotiation RJ45 LAN IN port 10/100/1000Mbps Auto-Negotiation RJ45 POWER+DATA OUT port DC 48V Power Input port <p>PoE Splitter:</p> <ul style="list-style-type: none"> 10/100/1000Mbps Auto-Negotiation RJ45 POWER+DATA IN port 10/100/1000Mbps Auto-Negotiation RJ45 LAN OUT port 5V/9V/12V DC OUT Power Output port |

Environmental and Physical Specifications

| | |
|-----------------------|--------------------------------|
| Operating Temperature | 0°C to 40°C (32°F to 104°F) |
| Storage Temperature | -40°C to 70°C (-40°F to 158°F) |
| Operating Humidity | 10% to 90% non-condensing |
| Storage Humidity | 5% to 90% non-condensing |

FCC STATEMENT

This equipment has been tested and found to comply with the limits for a Class B digital device, pursuant to part 15 of the FCC Rules. These limits are designed to provide reasonable protection against harmful interference in a residential installation. This equipment generates, uses and can radiate radio frequency energy and, if not installed and used in accordance with the instructions, may cause harmful interference to radio communications.

Any changes or modifications not expressly approved by the party responsible for compliance could void the user's authority to operate the equipment.

限用物質含有情況標示聲明書

| 產品元件名稱 | 限用物質及其化學符號 | | | | | |
|--------|------------|------|------|----------|----------|------------|
| | 鉛 Pb | 鎘 Cd | 汞 Hg | 六價鉻 CrVI | 多溴聯苯 PBB | 多溴二苯醚 PBDE |
| PCB | ○ | ○ | ○ | ○ | ○ | ○ |
| 外殼 | ○ | ○ | ○ | ○ | ○ | ○ |
| 電源適配器 | — | ○ | ○ | ○ | ○ | ○ |

備考1. "○"系指該項限用物質之百分比含量未超出百分比含量基準值。
 備考2. "—"系指該項限用物質為排除項目。

CE Mark Warning

This is a class B product. In a domestic environment, this product may cause radio interference, in which case the user may be required to take adequate measures.

TP-Link hereby declares that the device is in compliance with the essential requirements and other relevant provisions of directives 2014/30/EU, 2014/35/EU, 2009/125/EC and 2011/65/EU.

The original EU declaration of conformity may be found at <http://www.tp-link.com/en/ce>.

FAQ

Q1. Can the PoE Injector supply power to a PoE device which doesn't have a gigabit PoE port?

A: Yes. Both LAN and PoE ports comply with IEEE 802.3, IEEE 802.3u and IEEE 802.3ab standards and support 10/100/1000Mbps Auto-Negotiation.

Q2. What can I do if my PoE Injector doesn't supply power to the powered device or the supplied power is unstable?

A1: Ensure the PD is PoE-compliant and its connecting port supports the PoE function.

A2: Ensure the power consumption of the PD doesn't exceed 15.4W, otherwise the overload protection of the PoE Injector will be activated. The PoE Injector complies with IEEE 802.3af standard and supports 15.4W to a PD, while the quality and length of the Ethernet cable may influence the reception of the power supply.

Q3. Must I use the PoE Injector together with the PoE Splitter?

A: No. The PoE Injector can supply power to all PDs compliant with IEEE 802.3af standard. The PoE Splitter is used with a PoE switch or the PoE Injector to supply power to a non-PoE device.



Продукт сертифіковано згідно з правилами системи УкрСЕПРО на відповідність вимогам нормативних документів та вимогам, що передбачені чинними законодавчими актами України.

Safety Information

- Keep the device away from water, fire, humidity or hot environments.
- Do not attempt to disassemble, repair, or modify the device.
- Do not use damaged charger or USB cable to charge the device.



Use only power supplies which are provided by manufacturer and in the original packing of this product. If you have any questions, please don't hesitate to contact us.

Please read and follow the above safety information when operating the device. We cannot guarantee that no accidents or damage will occur due to improper use of the device. Please use this product with care and operate at your own risk.

Explanation of the symbols on the product label

| | |
|--|--|
| | DC voltage |
| | <p>RECYCLING</p> <p>This product bears the selective sorting symbol for Waste electrical and electronic equipment (WEEE). This means that this product must be handled pursuant to European directive 2012/19/EU in order to be recycled or dismantled to minimize its impact on the environment. User has the choice to give his product to a competent recycling organization or to the retailer when he buys a new electrical or electronic equipment</p> |
| | Indoor use only |



Industry Canada Statement
 CAN ICES-3 (B)/NMB-3(B)