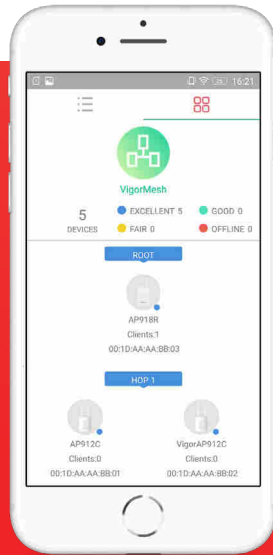


Ruggedised Outdoor 11ac Wave 2 Mesh Wireless APs



VigorAP 918R Series

InVIGORate your Business Network with DrayTek Mesh APs

Product Overview

The VigorAP 918R Series includes the VigorAP 918RPD and the VigorAP 918R access points, both Ruggedised Outdoor Mesh Wireless Access Points designed for reliable operations in any outdoor scenario, so you can provide wireless where it's needed.

Key Features & Benefits

Outdoor WiFi AP – Weather Resistant

The VigorAP 918R series is designed for use outdoors with a water and dust resistant IP67 casing. Designed to reliably operate in extreme hot or cold conditions, the VigorAP 918R is an ideal access point for permanent outdoor installation.

Benefits: Reliable Wireless access in tough outdoor conditions. Withstands extreme hot or cold.

Easy to Configure and Manage

The DrayTek Wireless app simplifies setting up your network. Optionally configure and monitor through one of DrayTek's management platforms - VigorACS cloud, VigorConnect, Router AP Management, or directly via the AP's Web Interface.

Benefits: Quick to install and change configuration.

Mesh Wireless – Auto Optimising

DrayTek's Mesh system connects and intelligently manages a group of VigorAPs over wireless. The Self-Optimising Mesh ensures your wireless network nodes are always using the fastest path to the Mesh Root.

Benefits: Quick to set up and easy to manage. Reduces the need for cable installation.

Long Range Point to Point Wireless

Create long distance wireless links with the VigorAP 918RPD's High-Gain directional antenna. Connect two locations potentially over a kilometer apart with 11ac wireless. Signal strength LED indicators simplify aiming & installation.

Benefits: High speed wireless connectivity between two locations.

Gigabit PoE Ports

The VigorAP 918R is powered through its Gigabit Ethernet interface with Power over Ethernet, for convenient installation. Connect and power an additional device through the VigorAP 918RPD with its secondary Gigabit Ethernet port that has PoE-Output.

Benefits: High Speed connections even in locations without mains power. Convenient Installation.

Wireless Optimisation

802.11ac Wave 2: Multi-User MIMO improves efficiency.

Band Steering: Allows 5GHz devices to achieve optimum speeds.

Airtime Fairness: Improves time management for wireless clients.

AP Assisted Roaming: Helps clients connect to the best AP.

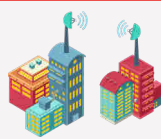
Simple & fast setup with the Draytek Wireless App



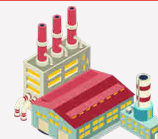
Perfect for:



Outdoor locations



Point to point links



Industrial environments



Outdoor events

Key Specification

- Outdoor Mesh Wireless Access Point and Range Extender
- IP67 - Designed to provide reliable wireless outdoors in all conditions
- AC1300 - 11ac 'Wave 2' Dual Band Wireless with Omni-Directional Antennas
- 5GHz High-Gain Directional Antenna, up to 866Mbps Point-to-Point link (RPD model)
- Gigabit Ethernet port with Power over Ethernet Input
- VigorAP 918RPD provides 2nd Gigabit Ethernet port with PoE Output
- Centrally Managed or Standalone operation

Technical Specification (UK Hardware Spec.)

Operating Modes

- Access Point
- Range Extender
- Mesh Root
- Mesh Node

Physical Interfaces/Controls

- 1 x Gigabit Ethernet LAN Port, RJ-45 (PoE-PD input)
- 1 x Gigabit Ethernet LAN Port, RJ-45 (PoE-PSE output, RPD model)
- Factory Reset Button (covered)
- Antenna Connectors: 2x RP-SMA Type
- Built-In Temperature & Humidity Sensor

Wireless Performance

- AC1300 Class Wireless Access Point
- 5GHz: PHY Rate 866Mb/s
- 2.4GHz: PHY Rate 400Mb/s

Wireless LAN Compatibility

- IEEE 802.11ac (Wave 1 & 2)/a/b/g/n
- Frequency Band 2.4 GHz & 5.8GHz - Simultaneous Operation
- Up to 128 clients per radio - 256 total clients

2.4GHz Wireless LAN Features

- 802.11b, 802.11g, 802.11n
- 20 / 40 MHz
- Up to 300Mb/s total Wi-Fi throughput (PHY Rate):
 - 802.11b/g/n: 300Mb/s PHY rate (150Mb/s per Spatial Stream)
 - 256-QAM: 400Mb/s (200Mb/s per Spatial Stream)

5Ghz Wireless LAN Features

- 802.11ac (Wave 1 & 2) / 802.11n / 802.11a
- 20 / 40 / 80 MHz
- Extended 5Ghz Band - Channels 100-140
- DFS/TPC Support
- Multi-User MIMO
- Up to 866Mb/s total Wi-Fi throughput (PHY Rate):
 - 802.11a/n: 300Mb/s PHY rate (150Mb/s per Spatial Stream)
 - 802.11ac: 866Mb/s PHY rate (433Mb/s per Spatial Stream)

Wireless Control Features

- Wireless Client Status List in WUI
- Client Limit per radio
- Client Limit per SSID - **New!**
- Up to four distinct SSIDs (for VLANs) for each frequency band (2.4/5Ghz)
- MAC Cloning
- Built-in DHCP Server & DHCP Relay
- Trusted DHCP Server IP for WLAN - **New!** - Only specified DHCP server IP can assign IP addresses to WLAN clients
- 802.1q VLAN
- Station Control - Time limit wireless connectivity per Station (e.g. 1 hour) & set allowed Reconnection time (e.g. 1 day)
- Device Object/Group Control - **New!** - Schedule Internet access for individual devices or groups

Omni-Directional Wireless Antenna

- 2 x Antennae (supplied)
- 3.5 dBi Gain at 2.4GHz
- 5 dBi Gain at 5GHz
- RP-SMA fitting
- Omni-directional
- Removable
- Weatherproof
- TX/RX Dual-Band

Directional High-Gain Wireless Antenna (RPD model)

- Internal (Weatherproof)
- 5GHz TX/RX
- 11 dBi Gain at 5GHz
- Uni-Directional
- MIMO (2x2) antenna design
- 30 ° Horizontal Beam width
- 7.5 ° Vertical Beam width

Security Features

- Wireless Encryption:
 - WPA2-Personal (WPA2/PSK)
 - WPA2-802.1x
 - WPA3-Personal*
 - WPA3-802.1x*
 - Mixed (WPA2+WPA3)/PSK*
- MAC Address Filtering (ACL) - Up to 256 entries
- Built in 802.1x server (PEAP / EAP-TLS)
- 802.1x RADIUS Proxy (PEAP / EAP-TLS)
- PMK Caching & Pre-authentication
- Wireless Client Isolation
- Control Isolation of 2.4GHz and 5GHz bands
- Hidden SSIDs (Selectable)
- WPS - WiFi Protected Setup
- Mobile Device Management
- EAPOL Key Retry - Disable EAPOL Key Retry to protect unpatched WLAN clients from KRACK

Wireless Management Features

- 802.1q VLAN
- Up to four distinct SSIDs (for VLANs) for each frequency band (2.4/5Ghz)
- Multi-SSID over Mesh - **New!** Separate internal and Guest networks over Mesh*
- Wireless Client Status List in WUI
- Client Limit per radio
- Client Limit per SSID - **New!**
- MAC Cloning
- Built-in DHCP Server & DHCP Relay
- Trusted DHCP Server IP for WLAN - **New!** - Only specified DHCP server IP can assign IP addresses to WLAN clients
- Station Control - Time limit wireless connectivity per Station (e.g. 1 hour) & set allowed Reconnection time (e.g. 1 day)
- Device Object/Group Control - **New!** - Schedule Internet access for individual devices or groups
- Wireless Auto On/Off - **New!** - Disable Wireless if VigorAP is unable to ping specified host

Wireless Performance Optimisation

- Airtime Fairness
- Band Steering
- Client Steering - 802.11v*
- AP-Assisted Client Mobility
- Fast Roaming - 802.11r*
- WMM (Wireless MultiMedia)
- Bandwidth Management (Per Station / Per SSID)

Diagnostic Features

- System Log
- Speed Test
- Traffic Graph
- Wireless LAN Statistics
- Interference Monitor - Built-in Site Surveyor
- Integrated Temperature & Humidity Sensor

Management

- Web Interface (HTTP/HTTPS)
- DHCP Client
- TR-069 Control (For VigorACS or other TR-069 platform)
- CLI (Command Line Interface) – Telnet
- Access Control List for management interfaces
- Firmware upgrade by TR-069/HTTP
- Central AP Management (from compatible DrayTek router/controller)
- SNMP v2, v2c, v3
- Management VLAN
- Configuration File Export (with password) & Import

Power Specifications

- Maximum Power Consumption:
- VigorAP 918R Max Power Consumption: up to 18 Watts
- VigorAP 918RPD without PoE-PSE Passthrough: up to 18 Watts
- VigorAP 918RPD with PoE-PSE Passthrough: 43.2 Watts
- PoE-PSE - Passthrough Power Output at 100m (VigorAP 918RPD):
- Up to 12 Watts output with 802.3at power source
- Up to 18 Watts output with VigorPoE-600 PoE Injector power source
- PoE Standards: 802.3at
- PoE adapter not supplied, requires PoE injector or a PoE switch such as the VigorSwitch P1092

Environmental & Physical

- Operating Temperature: -40 °C to 70 °C
- Operating Humidity: 5% to 95% (Non-condensing)
- Physical Dimensions:
 - Height without Antenna & Port Covers: 244mm
 - Height with Antenna & Port Covers: 460mm
 - Width: 161mm
 - Depth: 72mm
- Weight: 1kg
- Pole or Wall Mountable
- Pack Contents:
 - VigorAP 918R series wireless access point
 - 2x Dual-Band Outdoor Antenna
 - 2x Stainless Adjustable Pipe Clamps
 - Ground Wire
 - Quick Start Guide
 - Ethernet Cable
 - Directional Mounting Kit (VigorAP 918RPD only)

ROHS & CE Compliant

Warranty: Two (2) Year Manufacturer's RTB

*Available in a future firmware release

Back



Side



Bottom

