

## Counter

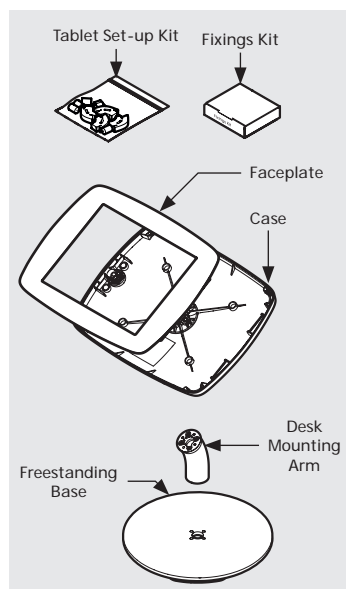
### Assembly Instructions

Follow these instructions for the successful assembly of your Bouncepad Counter.

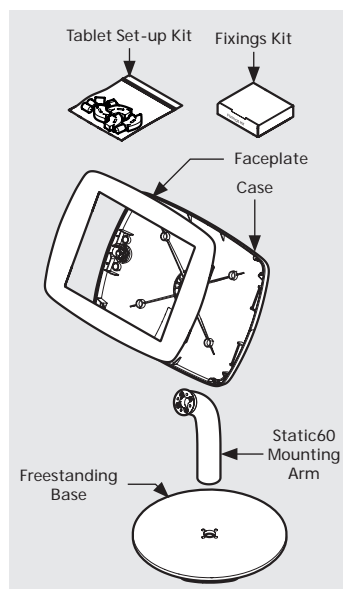
Sheet Code: BP-OR-IM-016\_REV4

Release Date: 31/07/2018

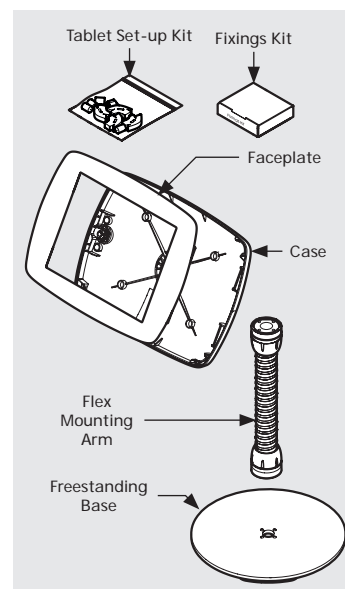
Copyright 2017 Spotspot Ltd. (T/A Bouncepad) all rights reserved. Confidential, no part of this publication may be reproduced or transmitted in any form without the written permission of the copyright holder.



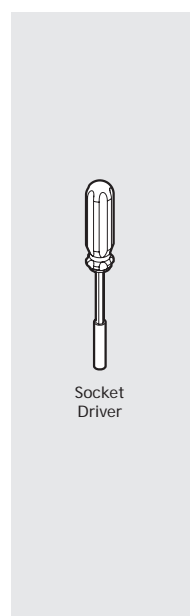
**A** Counter - In the Box



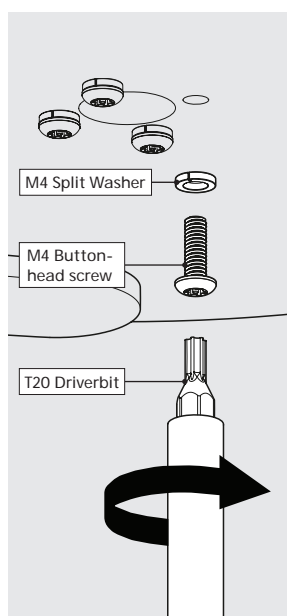
**B** Counter 60 - In the Box



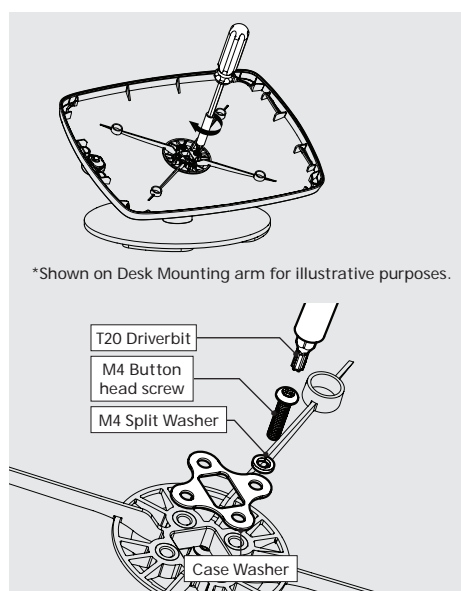
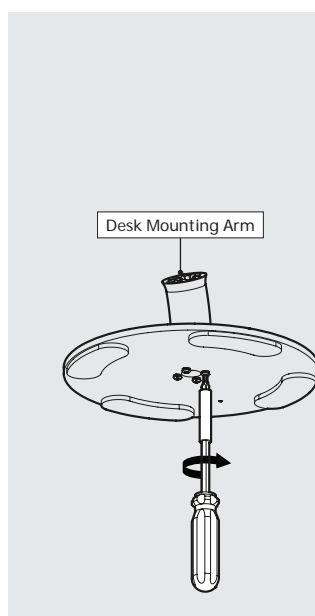
**C** Counter Flex - In the Box



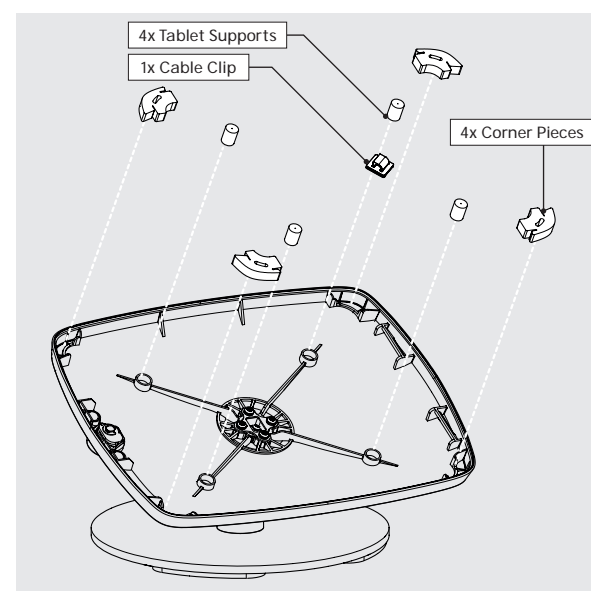
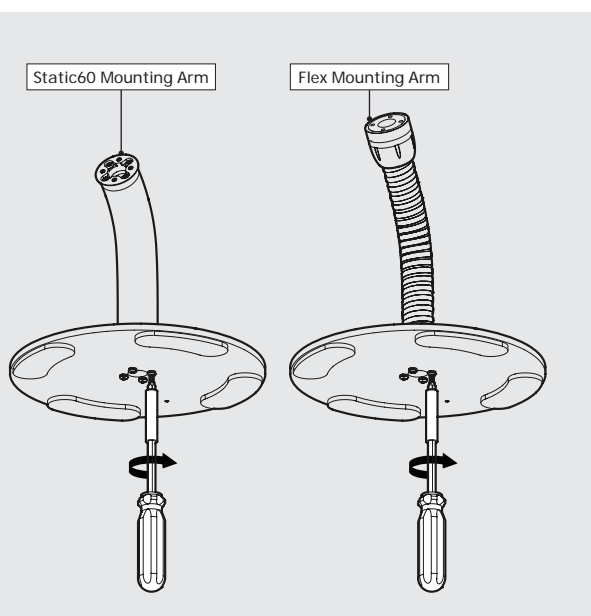
**0** Tools Required



**1** Attach your chosen Mounting Arm to the Freestanding Base. Ensure the correct fixings are used for your assembly.



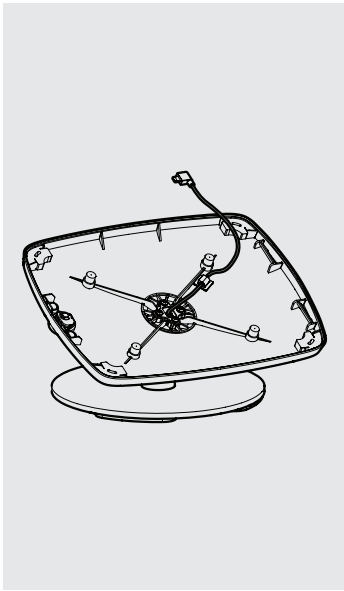
**2** Attach the Bouncepad Case to its Mounting Arm. Take care to ensure correct & full thread engagement.



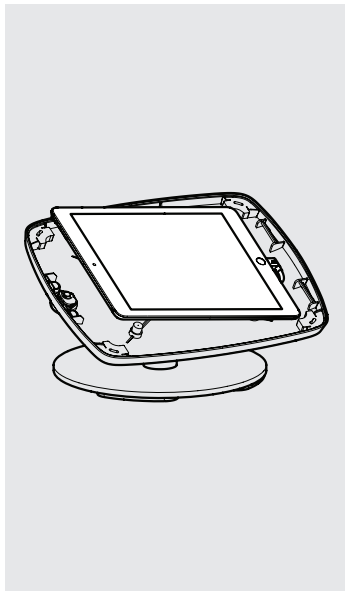
**3** Install the Tablet Setup Kit. Each kit is specific per tablet device and Bouncepad Case.

If installing the optional (purchased at additional cost) Reinforced Cable, go to Step A. Install only three of the four Buttonhead screws & Split Washers in Step 2 if installing the Reinforced Cable.





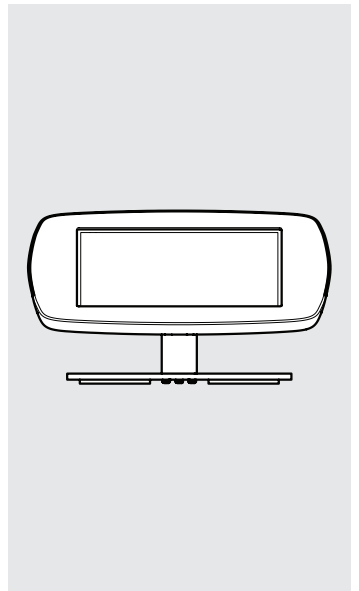
**4** Feed the cable through the Case. Connect to its power supply.



**5** Install your Tablet into the Case - connecting its power supply cable.



**6** Locate the Faceplate onto the Bouncepad Case.



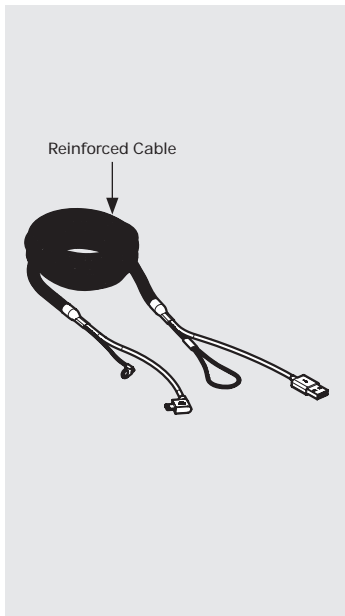
**7** Lock the Faceplate to the Case. Installation complete.

# **bouncepad**

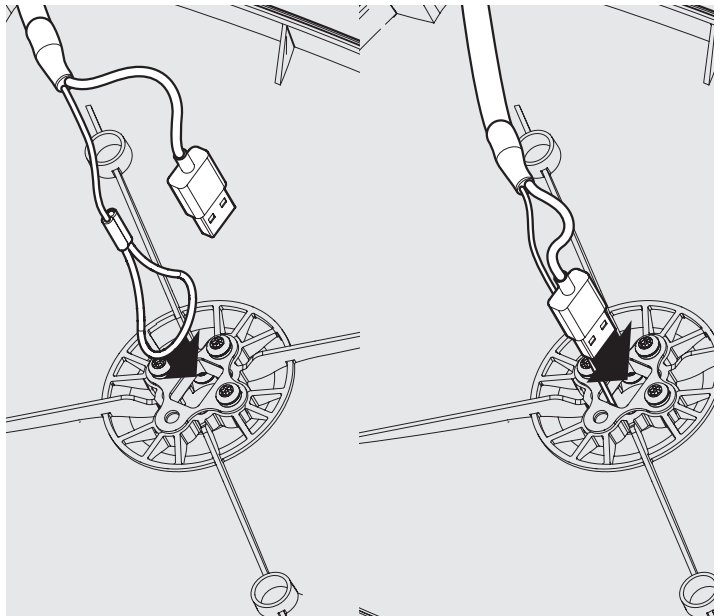
## **Reinforced Cable** Assembly Instructions

Follow these instructions for the successful assembly of your Reinforced Cable.

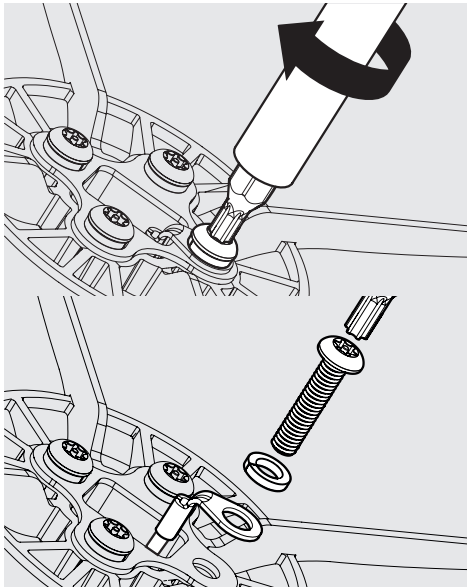
\*Reinforced Cable is sold (at additional cost) as an optional extra. Purchase of the Reinforced Cable negates the need for purchasing the Bouncepad Right Angle Cable.



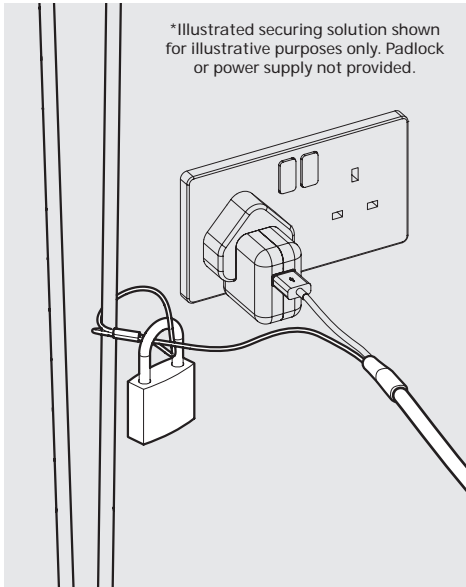
**A** Reinforced Cable - In the Box



**B** Feed the looped end of the Reinforced Cable through the Case, Mounting Arm & Freestanding Base.



**C** Secure the Reinforced Cable to the Bouncepad Case with the remaining Spring Washer & Buttonhead screw.



**D** Secure the looped end of the Reinforced Cable. Must be secured next to the power socket used.

**!** Return to Step 3 to complete the installation of your Bouncepad.