

EA SERIES

WITH IPS COLOUR FOR ENHANCED PRODUCTIVITY



Quality, Size and Future Ready Performance

The best-selling EA Series takes the best of two worlds, IPS high quality panel technology with trusted performance to meet the challenges of the demanding Corporate environment and strong ecological credentials that save operating costs and help Corporations meet their ECO targets. The EA Series includes a new innovative design technology, developed to incorporate the benefits of LED backlighting.

An attractive slim design, perfect in the modern office, does not mean compromise, instead DisplayPort, HDMI and MHL*, a well-arranged OSD design and finger touch control buttons on the bezel were added. Further improvements include NEC's unique Human Sensor, an Ambient Light Sensor, greater height adjustment, ControlSync®, an improved cable management for a tidy desk, and options for easy mounting of mini-PCs or thin clients as well as colour calibration for colour accurate applications.

DESIGNED FOR CORPORATES AND GOVERNMENT OFFICES

- iF Design Award Winning, Performance and Quality Oriented Concept
- Pixel free viewing experience with up to 4K UHD 3860 x 2160 resolution
- Strong Ecological Credentials and Future Ready Design and Features
- Super Wide, Wide and Conventional Models from 30" to 19"
- Extended Connectivity with DisplayPort and HDMI*
- Perfect ergonomic set up through 130mm height adjustability
- Simple optimisation of Multiscreen configurations via ControlSync®
- Additional options for assisting colour calibration and attaching mini-PCs

* Selected Models only, please see specifications overleaf.






EA ADVANCED FEATURES

DESIGNED FOR TODAY'S NEW GENERATION CORPORATES

The EA Series' advanced design is developed for users who demand best quality, high performance products that are ideal for today and for the future. Superior in form and function but also eco-friendly the EA Series delivers the highest accuracy images whilst allowing new levels of personal productivity, minimizing undesirable down-time and giving peace of mind that it is both future ready and kind to the environment.

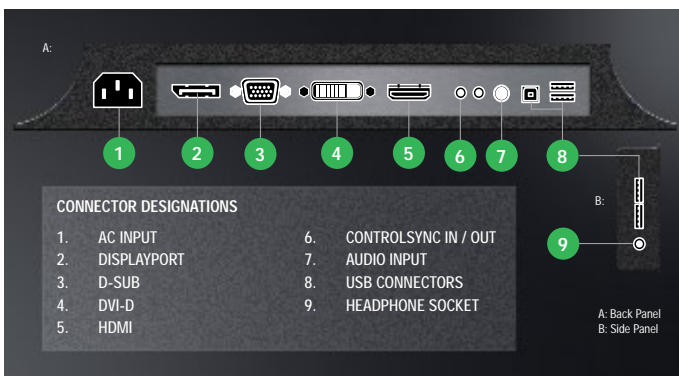
Introducing 4K UHD

The EA Series not only offers one of the widest range of displays on the market from the Super Wide' EA294WMI to the conventional 19" EA193MI but also now provides next generation 4K UHD resolution with optional colour calibration (via internal programmable LUT) for "pixel-free" and colour accurate imaging. With a wide choice of screen sizes and aspect ratios, products can be additional selected with cabinet colour, and premium quality IPS panels* to meet the challenges of the most discerning applications.

Future Ready Connectivity

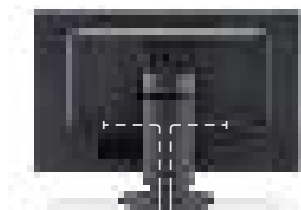
4 SIGNAL INPUTS PROVIDE EXPANDED CONNECTIVITY

The EA Series provides all the connectivity you need with D-sub, DVI-D, DisplayPort and HDMI*. This wide range of digital inputs provides flexibility in terms of connected source devices and playback media, data speeds and cable distances with a combination of established and future-ready inputs. Further connectors include ControlSync® (in/out), audio input, a headphone jack and USB Hubs. The newly introduced EA244UHD offers a pixel free viewing experience, as well as latest high-bandwidth DisplayPort connector supporting UHD @ 60Hz, so that no details will be overlooked.



Elegant Cable Management

The Simple Slot Cable Management Cable Cover helps to store all cables in the foot of the monitor for a tidy and uncluttered desk.



Advanced Ergonomics

IMPRESSIVE 130MM HEIGHT ADJUSTMENT, TILT, SWIVEL AND ROTATE

Achieving the perfect set up for optimum productivity and comfort is easy with the EA Series with light to the touch, tilt, swivel and rotate adjustments and an impressive 130mm height adjustment.

The side mounted headphone and USB sockets offer convenient connection for adding audio devices or headset usage.

ECO PERFORMANCE

With it's LED backlighting the EA Series draws less overall power, produces less heat radiation and uses less packaging and less materials. We also use recycled plastics that are free of hazardous materials such as mercury and arsenic.

INNOVATIONS THAT MINIMISE POWER CONSUMPTION

The EA Series includes a number of intelligent features that ensure your display draws power only when it needs to. These include ECO Mode™, Intelligent Power Manager (IPM), an 'Off Timer' an 'Ambient Light Sensor' which automatically reduces the brightness where the ambient light conditions are lower and the NEC unique 'Human Sensor' which detects the presence of the user and powers the display up or down accordingly. The Carbon Savings and Cost Meter make all these savings measurable over a period, assisting in your carbon reporting.



1. HUMAN SENSOR
2. AMBIENT LIGHT SENSOR



* Selected Models only, please see specifications overleaf.

Rich Detail and Complete Image Overview

Specialist professional applications are often identified by their need for detailed and reliable decision making. Often handling huge quantities of data, these applications are formidably demanding not only in terms of data quantity but also in terms of ergonomic, flexible, "pixel-free" viewing and highest image fidelity. The EA244UHD is NEC's first 4K UHD monitor, and is proud to usher in a new era of visual experience. The new super resolution 3840 x 2160 allows the viewing of the tiniest details, and offers essentially "pixel-free" viewing. This special display delivers not only controlled but also accurate and consistent colours (assisted with an optional calibration software) due to its 10-bit AH-IPS panel and advanced uniformity control feature. This particular display is of special interest to photographers, designers and anyone who makes decisions based on images.

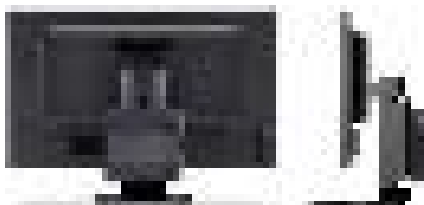


For more detailed information please visit:
www.4kuhd-nec.com

Accessories

UNIVERSAL BRACKET SYSTEM FOR THIN CLIENTS AND MINI PCS

Year after year PCs become more powerful, but at the same time smaller. The compact size of today's PCs provides new opportunities for arranging desktop space and office furniture. NEC offers a mounting bracket for the EA Series, which allows the easy mounting of a Mini PC or Thin Client. Using the simple VESA 100mm holes, this bracket can host many models from HP, Dell Wyse and Lenovo. This solution not only saves space, but still maintains the monitor's ergonomic height adjustment swivel and tilt capabilities.



Multi-Monitor Management

NEC CONTROLSYNC®

ControlSync® is an innovative new control and setting solution for your multiple display installations. By connecting designated cables included in the new EA Series to the ControlSync® sockets, setting and collected data from a 'Master' display can be transferred to Sub Displays. Displays connected via the 'IN' Socket become Sub displays. All of the Master Settings can be copied to Sub-Monitors in simple steps meaning that a multiscreen array of up to 6 displays can have their OSD settings simply and easily synchronised.

Colour Control Features

The EA304WMI and EA244UHD are unique within the EA Series to also offer wide colour gamut support. With a colour space covering 99% of the industry standard AdobeRGB, more visible colours allow for more realistic images, and more nuanced representation. But it is the controls associated with this enhanced colour space that really make the difference: the 14-bit programmable LUT controlling the RGB gamma curves, means that after calibration (using the optional software accessory) you really see all colours as intended. Additional uniformity control also works with the IPS panel to ensure that colours are reliably and consistently shown across the screen and from any viewing direction. The EA-Series 30" and UHD Monitors set a new standard for brilliant images, and are of particular interest to designers and anyone caring deeply about display content.

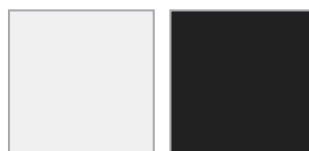
EA SERIES

WITH IPS COLOUR FOR ENHANCED PRODUCTIVITY

MODEL VARIATIONS	EA244UHD	EA302WMI	EA294WMI	EA274WMI	EA244WMI	EA234WMI	EA224WMI	EA273WM	EA223WM	EA193MI
Order Codes: Black White	60003683 60003684	60003494 60003495	60003417 60003415	60003493 60003492	60003414 60003409	60003588 60003587	60003336 60003337	60003154 60003153	60003294 60003293	60003586 60003585
Display	23,8" IPS W-LED	29,8" AH- IPS GB-R LED	29" SW IPS	27" IPS W-LED	24" W IPS	23" IPS W-LED	21.5" W IPS	27" W TN	22" W TN	19" IPS W-LED
Optimum Resolution	3840 x 2160	2560 x 1600	2560 x 1080 (21:9)	2560 x 1440	1920 x 1200 (16:10)	1920 x 1080 (16:9)	1920 x 1080 (16:9)	1920 x 1080 (16:9)	1680 x 1050 (16:10)	1280 x 1024 (5:4)
Brightness	350cd/m ²	350cd/m ²	300cd/m ²	350cd/m ²	350cd/m ²	250cd/m ²	250cd/m ²	300cd/m ²	250cd/m ²	250cd/m ²
Contrast Ratio	1000:1									
Dynamic Contrast Ratio	25000:1									
Viewing Angle (Contrast Ratio 10:1)	178° Vertical / 178° Horizontal								Typically 160° Vertical / 170° Horizontal	
Response Time	5ms	6ms	6ms	6ms	6ms	6ms	6ms	5ms	5ms	6ms
Panel Backlight	Edge W-LED	Edge GB-R LED	Edge W-LED	Edge W-LED	Edge W-LED	Edge W-LED	Edge W-LED	Edge W-LED	Edge W-LED	Edge W-LED
Input Signal Analog / Digital	2 x DVI-D, 2 x Display- Port, D-SUB, HDMI, HDMI/MHL	D-SUB / DVI-D DisplayPort HDMI	2 x D-SUB / 2 x DVI-D DisplayPort HDMI - MHL	D-SUB / DVI-D DisplayPort HDMI	D-SUB / DVI-D DisplayPort HDMI	D-SUB / DVI-D DisplayPort HDMI	D-SUB / DVI-D DisplayPort HDMI	D-SUB / DVI-D DisplayPort HDMI	D-SUB / DVI-D DisplayPort HDMI	DVI-D, DisplayPort, D-SUB
USB Hub	USB 3 (1up/3down)	USB 3 (1up/2down); USB 2 (1down)	1 Up, 4 Down	USB 3 (1up/2down); USB 2 (2down)	1 Up, 4 Down	4 Up, 1 Down	1 Up, 4 Down	1 Up, 4 Down	1 Up, 4 Down	--
ControlSync In / Out	Yes									
VESA Mounting	Yes (100 x 100)									
Power Use [W] Max ECO / Power Save	83 / 48 / <0.5	83 / 48 / <0.5	50 / 38 / 0.40	57 / 35 / <0.5	29 / 21 / 0.47	27 / 16 / <0.5	26 / 15 / 0.43	39 / 17 / 0.48	25 / 12 / 0.50	18 / 10 / 0.35
Height Adjustment	130mm	130mm	130mm	130mm	130mm	130mm	130mm	130mm	130mm	110mm
Dimensions (W x H x D) [mm]	687 x 473 x 230	687 x 473 x 230	705.8 x 410.4 x 230.0	639.2 x 417.9 x 230	556.2 x 408.9 x 230.0	543.8 x 380.4 x 218	507.0 x 370.0 x 218.0	631.4 x 415.0 x 230.0	503.5 x 384.0 x 218.0	408 x 386 x 213
Low Position Stand Mounting Holes	Yes									
Standards	EPEAT Gold, TCO 6 Energy Star 6.0	EPEAT Gold, TCO 6 Energy Star 6.0	EPEAT Gold, TCO 5.2, Energy Star 5.0, ISO9241-307	EPEAT Gold, TCO 6 Energy Star 6.0	EPEAT Gold, TCO 5.2, Energy Star 5.0, ISO9241-307	EPEAT Gold, TCO 6 Energy Star 6.0	EPEAT Gold, TCO 5.2, Energy Star 5.0, ISO9241-307	EPEAT Gold, TCO 5.2, Energy Star 5.0, ISO9241-307	EPEAT Gold, TCO 5.2, Energy Star 5.0, ISO9241-307	EPEAT Gold, TCO 5.2, Energy Star 5.0, ISO9241-307
Warranty	3 Years Pan-European, with warranty extensions to 4 & 5 years, as well as heavy duty 16/7 usage also available.									



COLOUR OPTIONS



This document is © Copyright 2013 NEC Display Solutions Europe GmbH. All rights are reserved in favour of their respective owners. The document, or parts thereof, should not be copied, adapted, redistributed, or otherwise used without the prior written permission of NEC Display Solutions Europe GmbH. This document is provided "as is" without warranty of any kind whatsoever, either express or implied. Errors and omissions are excepted. NEC Display Solutions Europe GmbH may make changes, revisions or improvements in, or discontinue the supply of any product described or referenced in this document at any time without notice.



NEC Display Solutions Europe GmbH – HQ
Landshuter Allee 12-14, D-80637 München
info@mail@nec-displays.com
Phone: +49 (0) 89 99 699-0
Fax: +49 (0) 89 99 699-500
www.nec-display-solutions.com

Document Name: New EA Series Displays Guide
Document Revision: Version 5
Document Date: 08/14

Empowered by Innovation

