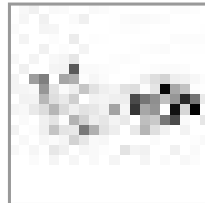
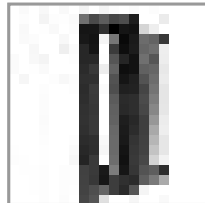
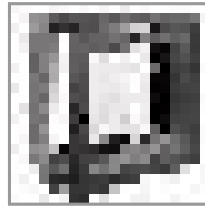
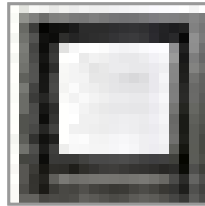


SmartRack 12U Very Low-Profile Patch-Depth Wall-Mount Small Rack Enclosure, Clear Acrylic Window

MODEL NUMBER: SRW12U13G



Wall-mount cabinet secures and organizes 12U of 19-inch rack equipment in network closets, classrooms and other locations with limited floor space. Clear acrylic window allows you to monitor equipment without unlocking door.

Description

The SRW12U13G SmartRack® 12U Very Low-Profile Patch-Depth Wall-Mount Rack Enclosure Cabinet is designed to house shallow equipment up to 12.75 inches deep in network closets, retail locations, classrooms and other areas with limited floor space where you need equipment to be secure, organized and out of the way. Constructed from heavy-duty steel with a durable black powder-coated finish, the cabinet has a maximum load capacity of 200 pounds (90.7 kilograms).

The front door features a shatter-resistant clear acrylic window that lets you monitor equipment readouts without unlocking the enclosure. Not only does the window help prevent equipment tampering and reduce acoustic noise, but it also adds visual flair to your IT installation.

To ensure your valuable equipment stays secure, the side panels and front door lock. The top, bottom and removable side panels are vented, which allows air to flow freely through the cabinet to keep equipment cool. The reversible front door can open left or right by rotating the cabinet 180 degrees before mounting. Convenient top and bottom ports allow easy cable routing through the cabinet.

The SRW12U13G comes fully assembled and ready to mount to the wall, or use the optional SRCASTER caster kit (sold separately) to make it a mobile rolling rack. Square and 12-24 threaded mounting holes and numbered rack spaces make equipment installation easy. The vertical mounting rails house equipment up to 12.75 inches deep, such as network switches and patch panels.

Features

Saves Valuable Workspace

- Perfect for network closets, retail locations, classrooms and other areas with limited floor space where you need equipment to be secure, organized and out of the way
- Houses shallow 19 in. rack equipment, including network switches and patch panels, in 12U of space
- Maximum load capacity of 200 pounds (90.7 kg)

Shatter-Resistant Clear Acrylic Front Window

- Lets you monitor equipment without unlocking the enclosure
- Prevents equipment tampering

Highlights

- Maximum load capacity of 200 lbs (90.7 kgs)
- Front door includes shatter-resistant clear acrylic window
- Locking steel cabinet vented at sides, top and bottom
- Secures 12U of 19 in. rack equipment up to 12.75 in. deep
- Mounts to wall or rolls on floor (with optional SRCASTER)

Package Includes

- SRW12U13G SmartRack 12U Very Low-Profile Patch-Depth Wall-Mount Rack Enclosure Cabinet
- (20) M6 screws
- (20) M6 cage nuts
- (20) M6 washers
- (20) 12-24 screws
- Removable mounting plate
- (3) Mounting plate screws
- (2) Keys
- Owner's manual



- Reduces acoustic noise
- Provides extra visual flair

Keeps Important Equipment Secure

- Side panels and front door lock securely
- Vented panels allow generous airflow that keeps equipment cool
- Rotate cabinet 180° before mounting to open reversible front door left or right
- Convenient ports with removable covers allow cable routing through top and bottom

Easy Enclosure and Equipment Installation

- Front mounting rails house shallow equipment up to 12.75 in. deep
- Ships fully assembled for quick installation
- Mounts to wall or rolls on floor with optional SRCASTER caster kit
- Wall-mounting holes spaced 16 in. apart to accommodate standard wall stud placement
- Rails support square-hole or 12-24 threaded-hole mounting
- Rack spaces numbered for easy reference

Meets Payment Card Industry Standards

- Provides physical equipment and media security required for PCI DSS (Payment Card Industry Data Security Standard) compliance

Specifications

OVERVIEW	
UPC Code	037332187314
Device Compatibility	Patch Panel
Rack Type	Small Enclosure
PHYSICAL	
Color	Black
Rack Height	12U
Rack Depth	Shallow
Maximum Device Depth (cm)	32.38
Maximum Device Depth (in.)	12.75
Maximum Device Depth (mm)	324
Cable Access Hole Measurement (inches)	9.812 x 2.35 (l x w)
Shipping Dimensions (hwd / in.)	15.75 x 25.60 x 27.56
Shipping Dimensions (hwd / cm)	40.00 x 65.02 x 70.00
Shipping Weight (lbs.)	38.00

Shipping Weight (kg)	17.24
Unit Dimensions (hwd / in.)	25.080 x 23.620 x 13.000
Unit Dimensions (hwd / cm)	63.7 x 59.99 x 33.02
Unit Weight (lbs.)	38
Unit Weight (kg)	17.24
Weight Capacity - Stationary (kg)	91
Weight Capacity - Stationary (lbs.)	200
Number of Vertical Mounting Rails	2
FEATURES & SPECIFICATIONS	
Grounding Details	Front door frame
Pre-Installed Casters	No
STANDARDS & COMPLIANCE	
Product Certifications	UL 60950-1
Product Compliance	RoHS; EIA/ECA-310-E
WARRANTY & SUPPORT	
Product Warranty Period (Worldwide)	5-year limited warranty