



Chief's Fusion wall mounts have been redesigned to keep all the features that made the original Fusion great while adding new attributes to make installation even smoother. New and existing accessories are available to customize any configuration.

**ARE YOU A CHIEF CERTIFIED PARTNER?**

Register at [chiefmfg.com/certification](http://chiefmfg.com/certification)

[chiefmfg.com](http://chiefmfg.com)

# MICRO-ADJUSTABLE FIXED AND TILT MOUNTS

An industry favorite, Fusion® Fixed and Tilt Mounts were designed with installer feedback for superior speed and usability. Recent upgrades added new benefits installers appreciate: better stability, less hardware, faster installation, improved cable management and more all add up to make the best wall mount yet.

## FEATURES

- ControlZone™ Height & Roll Adjustment is an industry-first feature for post-installation fine-tuning of height and leveling of the entire configuration, not just the TV.
- Centerless™ Lateral Shift allows for up to 16" (406 mm) of post-installation lateral shift - 8" (203 mm) left/right of uprights. New enhancements include up to 3" (76 mm) of lateral shift in the wall plates.
- Centris® Low-Profile Tilt provides effortless, tool free tilting by using the center of gravity to balance the screen.
- ClickConnect® Tool-Free Latching creates an audible click when the screen safely engages with the mount. A built-in cable stand allows easy access under the screen. Tuck Quick Store cords out of sight with the magnetized end.



ControlZone Height &  
Roll Adjustment



Centerless Lateral Shift



Centris Low-Profile Tilt



<b>MSM1U</b> Medium Fixed Mount, Landscape	<b>LSM1U</b> Large Fixed Mount, Landscape	<b>XSM1U</b> Extra-Large Fixed Mount, Landscape	<b>MTM1U</b> Medium Tilt Mount, Landscape
--	---	---	---



<b>MTMP1U</b> Medium Tilt Mount, Portrait	<b>LTM1U</b> Large Tilt Mount, Landscape	<b>XTM1U</b> Extra-Large Tilt Mount, Landscape
--	---	---

Model	Recommended Screen Size	Depth from wall	Centerless Lateral Shift	Centris Low-Profile Tilt	Maximum Mounting Patterns (WxH)	Weight Capacity (single stud, dual stud)
MSM1U*	26 - 47"	1.96" (50 mm)	12.9" (327 mm)	-	650 x 400 mm	125 lbs (56.7 kg)
LSM1U	37 - 63"	1.96" (50 mm)	17.4" (441 mm)	-	880 x 400 mm	200 lbs (90.7 kg)
XSM1U	55 - 82"	2.23" (57 mm)	21.4" (542 mm)	+5°	1070 x 600 mm	250 lbs (113.4 kg)
MTM1U*	26 - 47"	1.99" (51 mm)	12.9" (327 mm)	+2° / -12°	600 x 400 mm	125 lbs (56.7 kg)
MTMP1U**	32 - 47"	3.06" (78 mm)	10.4" (265 mm)	+5° / -12°	570 x 600 mm	125 lbs (56.7 kg), 200 lbs (90.7 kg)
LTM1U	37 - 63"	1.99" (51 mm)	17.4" (441 mm)	+2° / -12°	830 x 400 mm	200 lbs (90.7 kg)
XTM1U	55 - 82"	1.92" (49 mm)	21.4" (542 mm)	+5° / -12°	1080 x 600 mm	250 lbs (113.4 kg)

\* Compatible with dual stud mounting only. Order FCA1S to accommodate single stud mounting.

\*\* Order FHB5038 VESA® Adapter for compatibility with 800-1000 mm vertical patterns.

# STANDARD FIXED AND TILT MOUNTS

Fusion Standard Fixed and Tilt Mounts are a great option when micro-height adjustment isn't needed. Ideal for installs using connector kits for multi-display applications.

Try Chief's Menu Board App to determine the mounts and connector kits needed for your next multi-screen installation. [www.chiefmfg.com/MonitorCalculator](http://www.chiefmfg.com/MonitorCalculator)



<b>MSA1U</b> Medium Fixed Mount, Landscape	<b>LSA1U</b> Large Fixed Mount, Landscape	<b>MTA1U</b> Medium Tilt Mount, Landscape	<b>LTA1U</b> Large Tilt Mount, Landscape
--	---	---	--

Model	Recommended Screen Size	Depth from Wall	Centerless Lateral Shift	Centris Low-Profile Tilt	Maximum Mounting Patterns (WxH)	Weight Capacity (dual stud)
MSA1U*	26 - 47"	1.96" (50 mm)	12.9" (327 mm)	-	640 x 400 mm	125 lbs (56.7 kg)
LSA1U	37 - 63"	1.96" (50 mm)	17.4" (441 mm)	-	870 x 400 mm	200 lbs (90.7 kg)
MTA1U*	26 - 47"	1.99" (51 mm)	12.9" (327 mm)	+2° / -12°	645 x 400 mm	125 lbs (56.7 kg)
LTA1U	37 - 63"	1.99" (51 mm)	17.4" (441 mm)	+2° / -12°	870 x 400 mm	200 lbs (90.7 kg)

\* Compatible with dual stud mounting only. Order FCAIS to accommodate single stud mounting.



# PULL-OUT MOUNTS

Fusion Series Pull-Out Wall Mounts allow easy cable access and servicing in hard to reach installations. Ideal for small video walls and for single screen applications where access is important. For larger video walls check out Chief's ConnexSys video wall mounting system.

## FEATURES

- Pull-Out Extension allows screen to be pulled out up to 7" (178 mm) for servicing.
- ControlZone™ Leveling for post-installation fine-tuning of height and leveling of the entire configuration, not just the TV.
- Centerless™ Shift lets you slide screens apart or together for easy maintenance and perfect alignment.
- ClickConnect™ creates an audible click when the screen safely engages with the mount.



### MSMVU

Medium Pull-Out Mount,  
Landscape

### MSMVPU

Medium Pull-Out Mount,  
Portrait

### LSMVU

Large Pull-Out Mount,  
Landscape

### LSMVPU

Large Pull-Out Mount,  
Portrait

Model	Recommended Screen Size	Extension Range	Plumb Adjust	Centris Lateral Shift	Maximum Mounting Patterns (WxH)	Weight Capacity
MSMVU	26 - 47"	3.7 - 10.7" (94 - 272 mm)	2.5°	14.5" (368 mm)	540 x 400 mm	125 lbs (56.7 kg)
MSMVPU	26 - 47"	3.7 - 10.7" (94 - 272 mm)	2.5°	10" (272 mm)	600 x 400 mm	125 lbs (56.7 kg)
LSMVU	37 - 63"	3.7 - 10.7" (94 - 272 mm)	2.5°	17.5" (445 mm)	760 x 505 mm	150 lbs (68 kg)
LSMVPU	37 - 63"	3.7 - 10.7" (94 - 272 mm)	2.5°	4" (102 mm)	800 x 400 mm	150 lbs (68 kg)

# ACCESSORIES

A full line of supporting accessories can be integrated to customize any installation, and many accessories work across the Fusion wall, ceiling and freestanding mounts.



FCA800/ FCA801		Compatibility
Above/Below Shelf, Large* Displays		Fusion Fixed & Tilt Wall, Freestanding & Ceiling Mounts
Model	Size	Weight Capacity
FCA800	8" (203 mm)	10 lbs (4.5 kg)
FCA801	14" (355 mm)	10 lbs (4.5 kg)

\*Typical screen size: 46-70".



FCA831/ FCA841		Compatibility
Left/Right Speaker Adapter		Fusion Fixed & Tilt Wall, Freestanding & Ceiling Mounts
Model	Typical Screen Size	Weight Capacity
FCA831	42 - 70"	10 lbs (4.5 kg)/side
FCA841	50 - 95"	10 lbs (4.5 kg)/side



FCA810/ FCA811		Compatibility
Above/Below Shelf, XL* Displays		Fusion Fixed & Tilt Wall, Freestanding & Ceiling Mounts
Model	Size	Weight Capacity
FCA810	8" (203 mm)	10 lbs (4.5 kg)
FCA811	14" (355 mm)	10 lbs (4.5 kg)

\* Typical screen size: 70-100".



FCA112	Equipment Depth Range	Compatibility
Secure CPU/Media Player Adapter	0 - 1.63" (0 - 41 mm)	Large & Extra Large Fusion Wall Mounts



FCK000/008/016		Compatibility
Connector Kits		Fusion Fixed & Tilt Wall Mounts
Model	Width	
FCK000	Adds zero length to the poles	
FCK008	8" (203 mm)	
FCK016	16" (406 mm)	



FCA820/821		Compatibility
Video Conference Camera Shelves - Center		All Fusion Series Mounts
Model	Dimensions (WxD)	Weight Capacity
FCA820	8 x 10.6" (203 x 269 mm)	10 lbs (4.5 kg)
FCA821	14 x 10.6" (355 x 269 mm)	10 lbs (4.5 kg)



FCA1S	Weight Capacity	Compatibility
Single Stud Adapter	75 lbs (34 kg)	All Medium Fixed & Tilt Wall Mounts



FCA106	Compatibility
Side Cover Accessory	Fusion Fixed & Tilt Wall Mounts



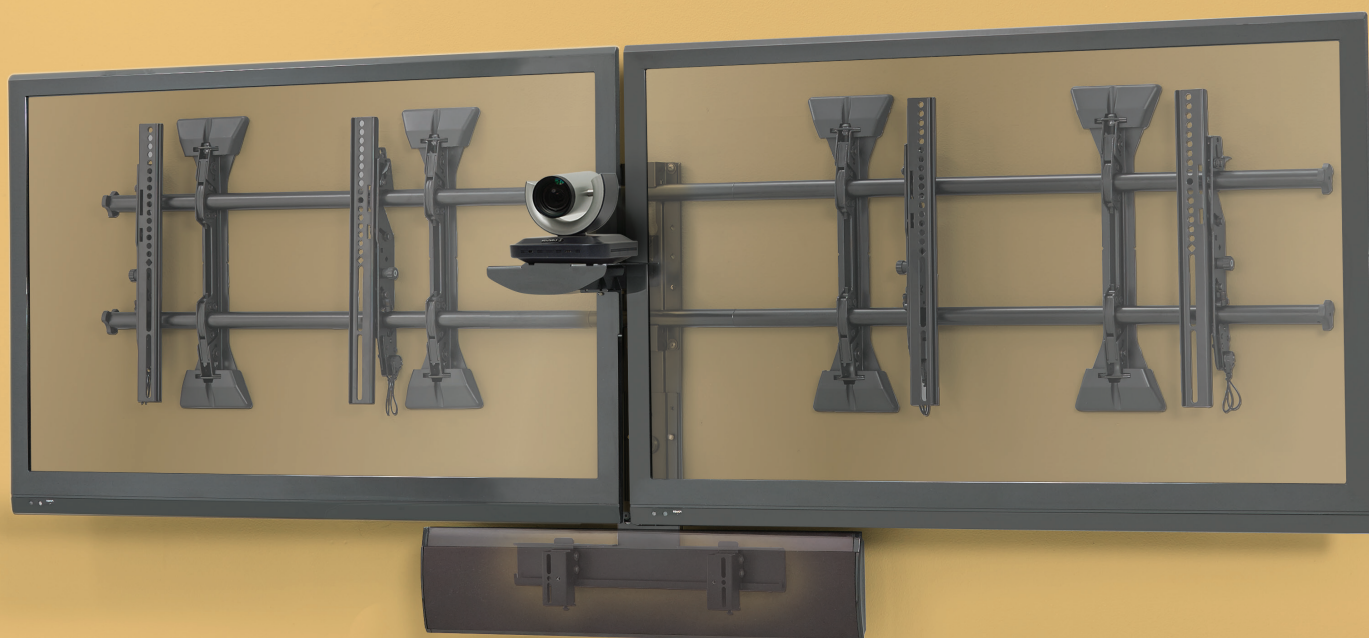
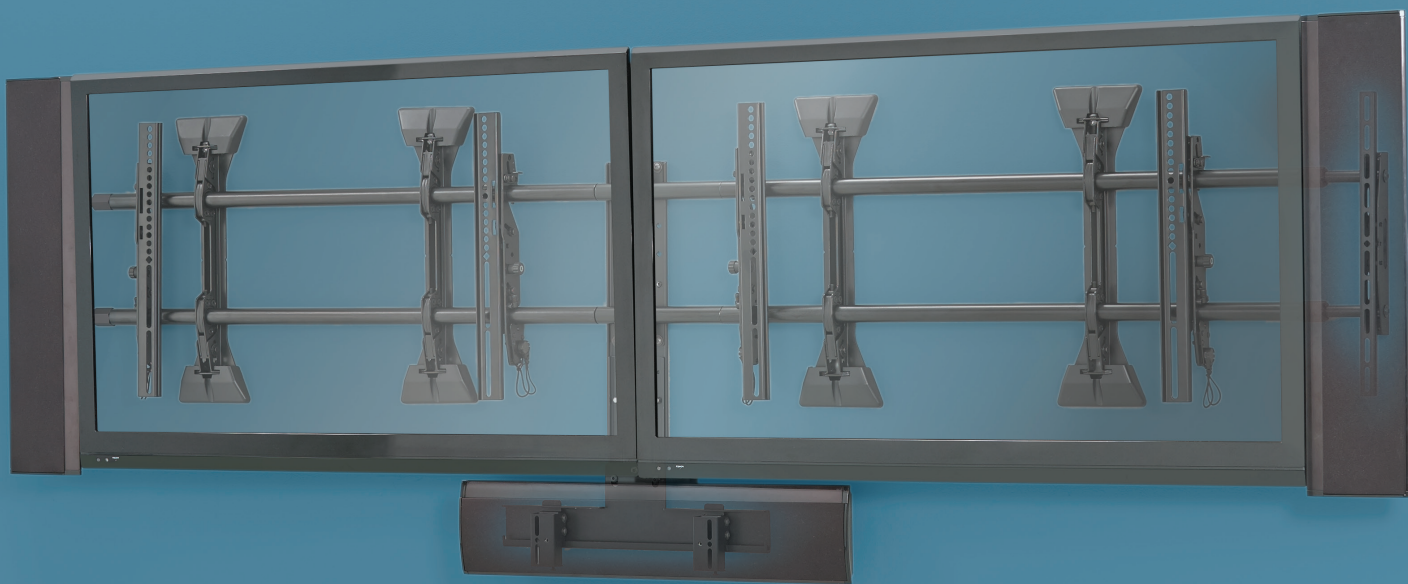
PAC525	Dimensions (HxWxD)	Compatibility
Small Multi-Depth Wall Box	9 x 14.25 x 3.9" (229 x 362 x 99 mm)	All Chief Wall Mounts; Standard & 2.5" (64 mm) depth studs



FCA830/ FCA840		Compatibility
Center Channel Speaker Adapter		Fusion Fixed & Tilt Wall, Freestanding & Ceiling Mounts
Model	Typical Screen Size	Weight Capacity
FCA830	52 - 80"	20 lbs (9.1 kg)
FCA840	70 - 100"+	20 lbs (9.1 kg)



PAC526	Dimensions (HxWxD)	Compatibility
Large Multi-Depth Wall Box	14.25 x 14.25 x 3.9" (362 x 362 x 99 mm)	All Chief Wall Mounts; Standard & 2.5" (64 mm) depth studs





### 1 SUPER STABILITY

Included set screws can be used to keep the mount rigid while attaching the uprights to the wall and while hanging the display. Engaging the set screws also ensures secure, precise positioning throughout the life of the installation.



### 2 NESTING SPACERS

Exclusive nesting spacers can be stacked to achieve any depth, providing a simple, universal hardware solution for mounting displays.



### 3 FASTER INSTALLATION

Integrated teardrop design speeds up wall plate installation by allowing pre-installation of the bolts to the wall. The mount can then be hung and the bolts tightened down to secure the install.



### 4 QUICK-STORE CORDS

New, magnetized ClickConnect™ makes it easy to store and access pull cords. Once the display is clicked into place simply snap the magnet anywhere onto the interface to hide the cords from view.



### 5 IMPROVED CABLE MANAGEMENT

Redesigned end caps allow cables to be routed behind the poles – no need to remove.

## BETTER PACKAGING

We didn't stop with the mount. We wanted to improve the overall experience, so we made the box easier to open with less waste to throw away. Along with that, we implemented an interface hardware box that can be hung from the mount so you don't lose any pieces if there is a long gap between hanging the mount and hanging the display.



A BRAND OF MILESTONE AV TECHNOLOGIES ■ [www.chiefmfg.com](http://www.chiefmfg.com)

USA P 800.582.6480 / +1.952.225.6000 ■ F 877.894.6918 / +1.952.894.6918 ■ [chief@chiefmfg.com](mailto:chief@chiefmfg.com)  
Canada P 877.345.4329 ■ F 888.377.5314 ■ [canadainfo@milestone.com](mailto:canadainfo@milestone.com)  
EMEA P +31 495 580 840 ■ F +31 495 580 845 ■ [emea.sales@milestone.com](mailto:emea.sales@milestone.com)  
Asia Pacific P +852 2145 4099 ■ F +852 2145 4477 ■ [asia.chief@milestone.com](mailto:asia.chief@milestone.com)

In British Columbia, Milestone AV Technologies ULC carries on business as MAVT Milestone AV Technologies ULC.

©2015 Milestone AV Technologies, 150029B 4/15 Chief is a registered trademark of Milestone AV Technologies. All other brand names or marks are used for identification purposes and are trademarks of their respective owners. All patents are protected under existing designations. Other patents pending.