

Philips Evnia Curved
Gaming Monitor
WQHD gaming monitor

Evnia 5000

34" (86.36 cm)
3440 x 1440 (WQHD)

34M1C5500VA



Feel your game

This Philips gaming monitor delivers crystal-clear visuals and smooth gameplay. Sync technology, 165Hz refresh rate with HDR create a lifelike experience. The slim-frame display with Ultra Wide-Color enhances visual immersion.

The gaming advantage is yours

- AMD FreeSync™ Premium; tear free, stutter free, fluid gaming
- 165Hz refresh rates for ultra-smooth, brilliant images
- 1ms (MPRT) fast response for crisp image and smooth gameplay
- Low input lag reduces time delay between devices to monitor

Immersive visuals

- Curved display design for more immersive experience
- VA display delivers awesome images with wide viewing angles
- CrystalClear images with UltraWide QHD 3440 x 1440 pixels
- SmartImage HDR gives optimal viewing from your HDR content

Features designed for you

- MultiView enables simultaneous dual connection and view
- LowBlue mode and Flicker-free easy-on-the eyes viewing
- Built-in stereo speakers for multimedia
- Tilt, swivel and height-adjust for an ideal viewing position

EVNIA | PHILIPS

WQHD gaming monitor
Evnia 5000 34" (86.36 cm), 3440 x 1440 (WQHD)

34M1C5500VA/00

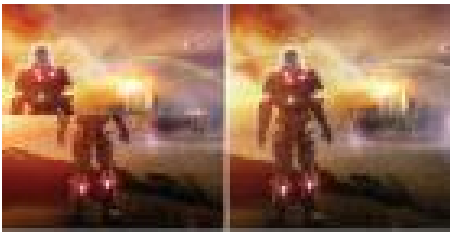
Highlights

Curved display design



Desktop monitors offer a personal user experience, which suits a curve design very well. The curved screen provides a pleasant yet subtle immersion effect, which focuses on you at the center of your desk.

AMD FreeSync™ Premium



Gaming shouldn't be a choice between choppy gameplay or broken frames. AMD FreeSync™ Premium equips serious gamers with a fluid, tear-free gameplay experience at peak performance. There are no compromises, game confidently with a high refresh rate, low framerate compensation, and low latency.

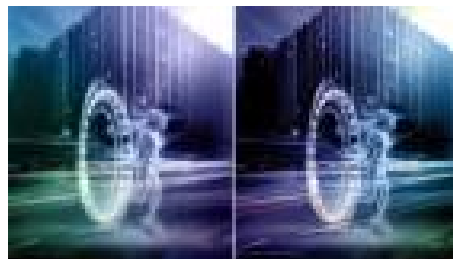
165Hz Gaming



You play intense, competitive gaming. You demand display with lag free, ultra-smooth images. This Philips display redraws the screen

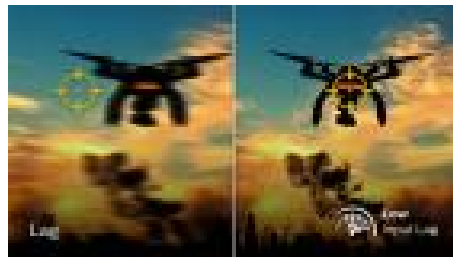
image up to 165 times per second, effectively faster than a standard display. A lower frame rate can make enemies appear to jump from spot to spot on the screen, making them difficult targets to hit. With 165Hz frame rate, you get those critical missing images on the screen which shows enemy movement in ultra-smooth motion so you can easily target them. With ultra-low input lag and no screen tearing, this Philips display is your perfect gaming partner

1ms MPRT fast response



MPRT (motion picture response time) is more intuitive way to describe the response time, which directly refers the duration from seeing blurry noise to clean and crisp images. Philips gaming monitor with 1 ms MPRT effectively eliminates smearing and motion blur, delivers shaper and precise visuals to enhance gaming experience. Best choice for playing thrilling and twitch-sensitive games.

Low Input Lag



Input lag is the amount of time that elapses between performing an action with connected devices and seeing the result on screen. Low input lag reduces the time delay between entering a command from your devices to

monitor, greatly improve on playing twitch-sensitive video games, particularly important to whom plays fast-paced, competitive games.

VA display



Philips VA LED display uses an advanced multi-domain vertical alignment technology which gives you super-high static contrast ratios for extra vivid and bright images. While standard office applications are handled with ease, it is especially suitable for photos, web-browsing, movies, gaming, and demanding graphical applications. It's optimized pixel management technology gives you 178/178 degree extra wide viewing angle, resulting in crisp images.

UltraWide CrystalClear images



These Philips screens deliver CrystalClear, UltraWide Quad HD 3440 x 1440 pixel images. Utilizing high performance panels with high-density pixel count, 178/178 wide viewing angles, these new displays will make your images and graphics come alive. The UltraWide 21:9 format enables more productivity with more room for side-by-side comparisons and more viewable spreadsheet columns. Whether you are demanding professional requiring extremely detailed information for CAD-CAM solutions, or a financial wizard working on huge spreadsheets, Philips displays delivers CrystalClear images.



Specifications

Picture/Display

- LCD panel type: VA LCD
- Backlight type: W-LED system
- Panel Size: 34 inch / 86.36 cm
- Display Screen Coating: Anti-Glare, 3H, Haze 25%
- Effective viewing area: 797.22 (H) x 333.72 (V) - at a 1500R curvature*
- Aspect ratio: 21:9
- Maximum resolution: HDMI: 3440 x 1440 @ 100 Hz, DP: 3440 x 1440 @ 165 Hz*
- Pixel Density: 109.68 PPI
- Response time (typical): 4 ms (Gray to Gray)*
- MPRT: 1 ms
- Low Input Lag
- Brightness: 300 cd/m²
- SmartContrast: Mega Infinity DCR
- Contrast ratio (typical): 3000:1
- Pixel pitch: 0.23175 x 0.23175 mm
- Viewing angle: 178° (H) / 178° (V), @ C/R > 10
- Flicker-free
- Color gamut (typical): NTSC 100%*, sRGB 120.7%*
- HDR: HDR 10 supported
- Picture enhancement: SmartImage game
- Display colors: 16.7 M (8 bit)
- Scanning Frequency: HDMI: 30 - 250 kHz (H) / 48 - 100 Hz (V), DP: 30 - 250 kHz (H) / 48 - 165 Hz (V)
- LowBlue Mode
- EasyRead
- sRGB
- AMD FreeSync™ technology: Premium

Connectivity

- Signal Input: HDMI 2.0 x 2, DisplayPort 1.4 x 2
- HDCP: HDCP 1.4 (HDMI / DisplayPort), HDCP 2.2 (HDMI / DisplayPort)
- USB Hub: USB 3.2 Gen 1 / 5 Gbps, USB-B upstream x 1, USB-A downstream x 4 (with 2 for fast charge B.C 1.2)
- Audio (In/Out): Audio out
- Sync Input: Separate Sync

Convenience

- Built-in Speakers: 5 W x 2
- MultiView: PIP/PBP mode, 2x devices
- User convenience: Power On/Off, Menu/OK, Input/Up, Game Settings/Down, SmartImage game/Back
- OSD Languages: Brazil Portuguese, Czech, Dutch, English, Finnish, French, German, Greek, Hungarian, Italian, Japanese, Korean, Polish, Portuguese, Russian, Spanish, Simplified Chinese, Swedish, Turkish, Traditional Chinese, Ukrainian
- Other convenience: Kensington lock, VESA mount (100x100mm)
- Plug & Play Compatibility: DDC/CI, Mac OS X,

sRGB, Windows 11 / 10 / 8.1 / 8 / 7

Stand

- Height adjustment: 130 mm
- Swivel: -/+ 45 degree
- Tilt: -5/20 degree

Power

- On mode: 31.3 W (typ.)
- Standby mode: 0.5 W (typ.)
- Off mode: 0.3 W (typ.)
- Energy Label Class: F
- Power LED indicator: Operation - White, Standby mode- White (blinking)
- Power supply: Internal, 100-240VAC, 50-60Hz

Dimensions

- Product with stand(max height): 808 x 618 x 308 mm
- Product without stand (mm): 808 x 366 x 107 mm
- Packaging in mm (WxHxD): 980 x 526 x 226 mm

Weight

- Product with stand (kg): 8.56 kg
- Product without stand (kg): 7.05 kg
- Product with packaging (kg): 11.50 kg

Operating conditions

- Temperature range (operation): 0°C to 40 °C
- Temperature range (storage): -20°C to 60 °C
- Relative humidity: 20%-80 %
- Altitude: Operation: +12,000ft (3,658m), Non-operation: +40,000ft (12,192m)
- MTBF: 50,000 (Excluded backlight) hour(s)

Sustainability

- Environmental and energy: RoHS
- Recyclable packaging material: 100 %
- Specific Substances: Mercury free, PVC / BFR free housing

Compliance and standards

- Regulatory Approvals: CB, CE Mark, FCC Class B, ICES-003, CU-EAC, EAEU RoHS, TUV/ISO9241-307, TUV-BAUART

Cabinet

- Color: Black
- Finish: Textured

What's in the box?

- Monitor with stand
- Cables: HDMI cable, DisplayPort cable, USB upstream cable, Power cable
- User Documentation

Issue date 2023-05-18

© 2023 Koninklijke Philips N.V.
All Rights reserved.

Version: 3.3.1

Specifications are subject to change without notice.
Trademarks are the property of Koninklijke Philips N.V.
or their respective owners.

12 NC: 8670 001 84991
EAN: 87 12581 79598 6

www.philips.com

* Radius of the arc of the display curvature in mm

* The maximum resolution works for DP input only.

* For best output performance, please always ensure that your graphic card is capable of achieving the maximum resolution and refresh rate of this Philips display.

* Response time value equal to SmartResponse

* MPRT is to adjust brightness for blur reduction, so cannot adjust brightness while MPRT is turned on. To reduce motion blur, LED backlight will strobe synchronously with screen refresh, which may cause noticeable brightness change.

* MPRT is gaming-optimized mode. Turn on MPRT may cause noticeable screen flickering. It is recommended to turn off when you are not using the gaming function.

* NTSC Area based on CIE1976

* sRGB Area based on CIE1931

* 2020 Advanced Micro Devices, Inc. All rights reserved. AMD, the AMD Arrow logo, AMD FreeSync™ and combinations thereof are trademarks of Advanced Micro Devices, Inc. Other product names used in this publication are for identification purposes only and may be trademarks of their respective companies.

* The monitor may look different from feature images.