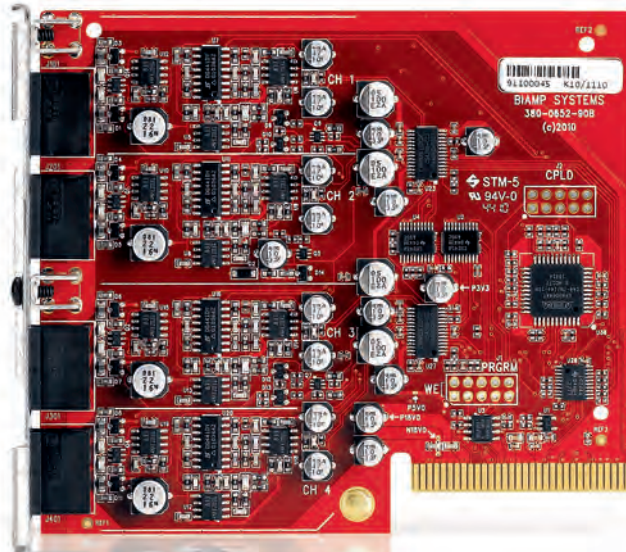


DATA SHEET

TESIRA® SOC-4

4-CHANNEL LINE LEVEL MODULAR OUTPUT CARD



The Tesira® SOC-4 is a modular analog output card for use with Tesira SERVER or SERVER-IO devices. Each SOC-4 provides 4 channels of mic or line level audio output. The outputs are electrically balanced and provided on plug-in barrier strip connectors. Software control of each output includes mute, level, signal invert and full-scale output reference.

BENEFITS

- Modular I/O cards can be mixed-and-matched both in Tesira SERVER and Tesira SERVER-IO
- Selectable output levels allow for ideal gain staging. Fully configurable and controllable in software

FEATURES

- 4 channels of balanced mic or line level output
- Plug-in barrier strip connectors
- -100 to +12dB fader range for level
- Signal invert for reverse polarity
- Selectable full-scale output reference level (24dBu, 18dBu, 12dBu, 6dBu, 0dBu, -31dBu) for best interface/performance
- RoHS compliant and AES grounded
- Covered by Biamp Systems' 5-year warranty

ARCHITECTS & ENGINEERS SPECIFICATION

The line level output shall be a 4-channel card designed exclusively for use with Tesira Server devices. The modular card shall provide 4 balanced outputs on plug-in barrier strip connections. Software configuration and control for each output shall include: mute, level, signal invert and selectable output reference level (24dBu, 18dBu, 12dBu, 6dBu, 0dBu, -31dBu). Digital-to-Analog conversion shall be 24-bit with a sampling rate of 48kHz. Performance specifications (20Hz-20kHz) shall be: Frequency Response +0/-0.25dB; THD+N < 0.0035%; and Dynamic Range > 110dB. The modular output card shall incorporate AES48-2005 Grounding and EMC practices and shall be compliant with the RoHS Directive. Warranty shall be 5 years. The output card shall be Tesira SOC-4.

TESIRA SOC-4 SPECIFICATIONS

| | | | |
|--|------------|--------------------------------------|---|
| Frequency Response (20Hz-20kHz @ +4dBu): | +0/-0.25dB | Selectable Full Scale Output Levels: | +24dBu, +18dBu, +12dBu, +6dBu, 0dBu, -31dBu |
| THD+N (20Hz-20kHz): | < 0.0035% | Sampling Rate: | 48kHz |
| Dynamic Range (20Hz-20kHz, 0dB): | > 110dB | D/A Converters: | 24-bit |
| Output Impedance (balanced): | 200Ω | Compliance: | AES48-2005 Grounding and EMI practices RoHS Directive (Europe) |
| Maximum Output: | +24dBu | | |
| Cross Talk (channel to channel @ 1kHz): | < -95dB | | |