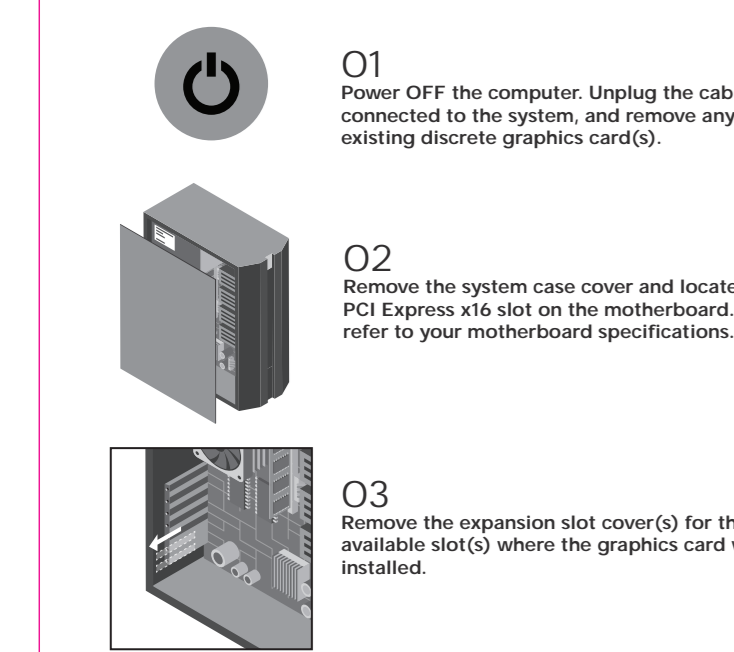


GRAPHICS CARD INSTALLATION

Q1
Power Off the computer. Unplug the cable(s) connected to the system, and remove any existing discrete graphics card(s).

Q2
Remove the system case cover and locate the PCI Express x16 slot on the motherboard. Please refer to your motherboard specifications.

Q3
Remove the expansion slot cover(s) for the available slot(s) where the graphics card will be installed.

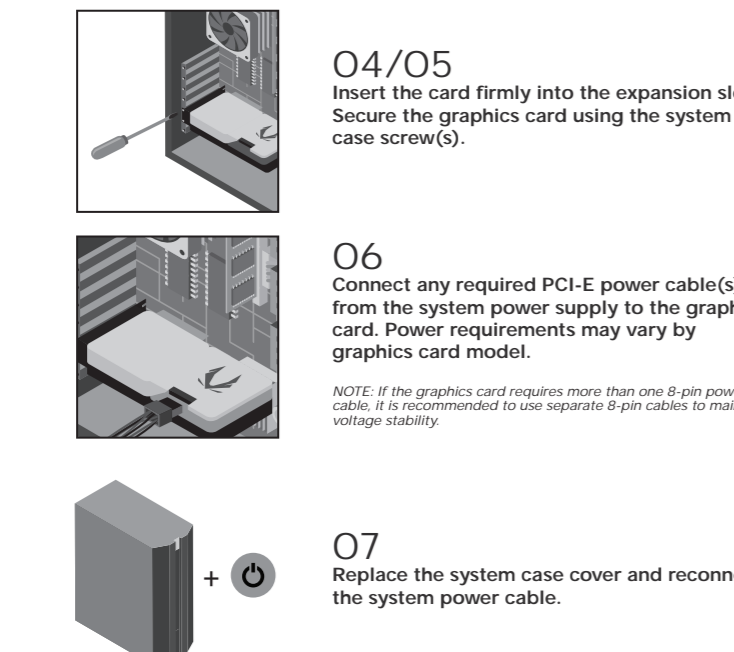


GRAPHICS CARD INSTALLATION

Q4/Q5
Insert the card firmly into the expansion slot. Secure the graphics card using the system case screw(s).

Q6
Connect any required PCI-E power cable(s) from the system power supply to the graphics card. Power requirements may vary by graphics card model.

NOTE: The graphics card requires more than one 8-pin power cable. It is recommended to use separate 8-pin cables to maintain voltage stability.



GEFORCE DRIVER INSTALLATION

PLEASE MAKE SURE TO HAVE THE LATEST AVAILABLE DRIVERS INSTALLED FOR YOUR ZOTAC GAMING GEFORCE GRAPHICS CARD FOR OPTIMAL GAMING PERFORMANCE.

NOTE: The latest GeForce Drivers are available at GEFORCE.com. An Internet connection is required to proceed.



- 1) Scan the above QR code to go to the NVIDIA GEFORCE® Drivers website or enter the URL into your system's Internet browser - <https://www.geforce.com/drivers>
- 2) Follow the onscreen menu to download the GeForce drivers for your graphics card model and OS.
- 3) Locate the downloaded file on your system and double click it to begin the installation process.
- 4) Follow the on-screen instructions to complete the installation and restart the system once done.

CONNECT A MONITOR

CONNECTING A DISPLAY TO THE GRAPHICS CARD

PRODUCT REGISTRATION
Register your new product on ZOTAC.COM to get FREE extended product warranty where applicable. Product registration must be successfully submitted within a limited time of new product purchase. Availability and window of time for product registration may vary by product and region.



FIRESTORM UTILITY
Our advanced fine-tuning software utilizes a simplified design to allow easy and immersive control of your ZOTAC and ZOTAC GAMING graphics cards. Monitor GPU performance, adjust the speed of clock, memory and fan, customize fan profile as well as SPECTRA RGB lighting, and do much more.

SUPPORT/CONTACT US
Need any help with your ZOTAC products? Please go to our Support page to find the answers, or simply contact us so we can provide the needed support.



ZOTAC.COM

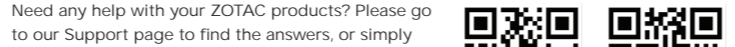


USEFUL LINKS

PRODUCT REGISTRATION
Register your new product on ZOTAC.COM to get FREE extended product warranty where applicable. Product registration must be successfully submitted within a limited time of new product purchase. Availability and window of time for product registration may vary by product and region.

FIRESTORM UTILITY
Our advanced fine-tuning software utilizes a simplified design to allow easy and immersive control of your ZOTAC and ZOTAC GAMING graphics cards. Monitor GPU performance, adjust the speed of clock, memory and fan, customize fan profile as well as SPECTRA RGB lighting, and do much more.

SUPPORT/CONTACT US
Need any help with your ZOTAC products? Please go to our Support page to find the answers, or simply contact us so we can provide the needed support.



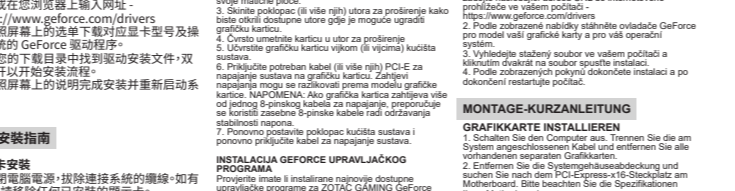
ZOTAC.COM



GEFORCE DRIVER INSTALLATION

PLEASE MAKE SURE TO HAVE THE LATEST AVAILABLE DRIVERS INSTALLED FOR YOUR ZOTAC GAMING GEFORCE GRAPHICS CARD FOR OPTIMAL GAMING PERFORMANCE.

NOTE: The latest GeForce Drivers are available at GEFORCE.com. An Internet connection is required to proceed.



- 1) Scan the above QR code to go to the NVIDIA GEFORCE® Drivers website or enter the URL into your system's Internet browser - <https://www.geforce.com/drivers>
- 2) Follow the onscreen menu to download the GeForce drivers for your graphics card model and OS.
- 3) Locate the downloaded file on your system and double click it to begin the installation process.
- 4) Follow the on-screen instructions to complete the installation and restart the system once done.

快速安裝指南

1. 關閉電腦電源，並拔掉主機的電線，並斷開電源開關。

2. 取下系統機殼蓋板，並定位主機板上的 PCI Express x16 插槽。

3. 取下對應插槽的擋板蓋。

4. 將顯示卡穩妥地插入主機板上的 PCI Express x16 插槽，並確保卡與插槽完全接觸。

5. 使用系統機殼蓋板上的螺絲，將顯示卡固定到機殼上。

6. 連接顯示卡所需的 PCI-E 電源線。

7. 重新安裝機殼蓋板，並重新連接主機電源線。

8. 打開電腦電源，並檢查顯示卡是否正常工作。

安裝 GEFORCE 驅動程序

請參閱 GEFORCE 安裝程序以獲取有關安裝 GEFORCE 驅動程序的詳細說明。

安裝 GEFORCE 驅動程序

請參閱 GEFORCE 安裝程序以獲取有關安裝 GEFORCE 驅動程序的詳細說明。

快速安裝指南

1. 關閉電腦電源，並拔掉主機的電線，並斷開電源開關。

2. 取下系統機殼蓋板，並定位主機板上的 PCI Express x16 插槽。

3. 取下對應插槽的擋板蓋。

4. 將顯示卡穩妥地插入主機板上的 PCI Express x16 插槽，並確保卡與插槽完全接觸。

5. 使用系統機殼蓋板上的螺絲，將顯示卡固定到機殼上。

6. 連接顯示卡所需的 PCI-E 電源線。

7. 重新安裝機殼蓋板，並重新連接主機電源線。

8. 打開電腦電源，並檢查顯示卡是否正常工作。

安裝 GEFORCE 驅動程序

請參閱 GEFORCE 安裝程序以獲取有關安裝 GEFORCE 驅動程序的詳細說明。

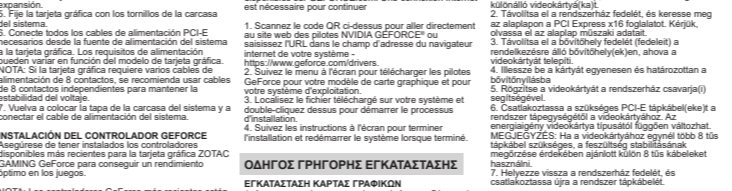
安裝 GEFORCE 驅動程序

請參閱 GEFORCE 安裝程序以獲取有關安裝 GEFORCE 驅動程序的詳細說明。

GEFORCE DRIVER INSTALLATION

PLEASE MAKE SURE TO HAVE THE LATEST AVAILABLE DRIVERS INSTALLED FOR YOUR ZOTAC GAMING GEFORCE GRAPHICS CARD FOR OPTIMAL GAMING PERFORMANCE.

NOTE: The latest GeForce Drivers are available at GEFORCE.com. An Internet connection is required to proceed.



- 1) Scan the above QR code to go to the NVIDIA GEFORCE® Drivers website or enter the URL into your system's Internet browser - <https://www.geforce.com/drivers>
- 2) Follow the onscreen menu to download the GeForce drivers for your graphics card model and OS.
- 3) Locate the downloaded file on your system and double click it to begin the installation process.
- 4) Follow the on-screen instructions to complete the installation and restart the system once done.

快速安裝指南

1. 關閉電腦電源，並拔掉主機的電線，並斷開電源開關。

2. 取下系統機殼蓋板，並定位主機板上的 PCI Express x16 插槽。

3. 取下對應插槽的擋板蓋。

4. 將顯示卡穩妥地插入主機板上的 PCI Express x16 插槽，並確保卡與插槽完全接觸。

5. 使用系統機殼蓋板上的螺絲，將顯示卡固定到機殼上。

6. 連接顯示卡所需的 PCI-E 電源線。

7. 重新安裝機殼蓋板，並重新連接主機電源線。

8. 打開電腦電源，並檢查顯示卡是否正常工作。

安裝 GEFORCE 驅動程序

請參閱 GEFORCE 安裝程序以獲取有關安裝 GEFORCE 驅動程序的詳細說明。

安裝 GEFORCE 驅動程序

請參閱 GEFORCE 安裝程序以獲取有關安裝 GEFORCE 驅動程序的詳細說明。

快速安裝指南

1. 關閉電腦電源，並拔掉主機的電線，並斷開電源開關。

2. 取下系統機殼蓋板，並定位主機板上的 PCI Express x16 插槽。

3. 取下對應插槽的擋板蓋。

4. 將顯示卡穩妥地插入主機板上的 PCI Express x16 插槽，並確保卡與插槽完全接觸。

5. 使用系統機殼蓋板上的螺絲，將顯示卡固定到機殼上。

6. 連接顯示卡所需的 PCI-E 電源線。

7. 重新安裝機殼蓋板，並重新連接主機電源線。

8. 打開電腦電源，並檢查顯示卡是否正常工作。

安裝 GEFORCE 驅動程序

請參閱 GEFORCE 安裝程序以獲取有關安裝 GEFORCE 驅動程序的詳細說明。

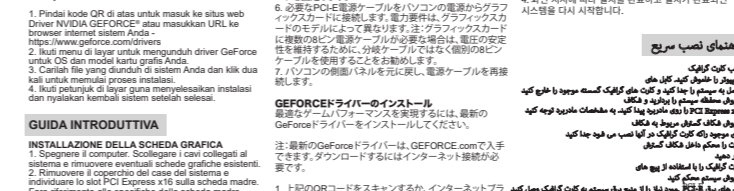
安裝 GEFORCE 驅動程序

請參閱 GEFORCE 安裝程序以獲取有關安裝 GEFORCE 驅動程序的詳細說明。

GEFORCE DRIVER INSTALLATION

PLEASE MAKE SURE TO HAVE THE LATEST AVAILABLE DRIVERS INSTALLED FOR YOUR ZOTAC GAMING GEFORCE GRAPHICS CARD FOR OPTIMAL GAMING PERFORMANCE.

NOTE: The latest GeForce Drivers are available at GEFORCE.com. An Internet connection is required to proceed.



- 1) Scan the above QR code to go to the NVIDIA GEFORCE® Drivers website or enter the URL into your system's Internet browser - <https://www.geforce.com/drivers>
- 2) Follow the onscreen menu to download the GeForce drivers for your graphics card model and OS.
- 3) Locate the downloaded file on your system and double click it to begin the installation process.
- 4) Follow the on-screen instructions to complete the installation and restart the system once done.

快速安裝指南

1. 關閉電腦電源，並拔掉主機的電線，並斷開電源開關。

2. 取下系統機殼蓋板，並定位主機板上的 PCI Express x16 插槽。

3. 取下對應插槽的擋板蓋。

4. 將顯示卡穩妥地插入主機板上的 PCI Express x16 插槽，並確保卡與插槽完全接觸。

5. 使用系統機殼蓋板上的螺絲，將顯示卡固定到機殼上。

6. 連接顯示卡所需的 PCI-E 電源線。

7. 重新安裝機殼蓋板，並重新連接主機電源線。

8. 打開電腦電源，並檢查顯示卡是否正常工作。

安裝 GEFORCE 驅動程序

請參閱 GEFORCE 安裝程序以獲取有關安裝 GEFORCE 驅動程序的詳細說明。

安裝 GEFORCE 驅動程序

請參閱 GEFORCE 安裝程序以獲取有關安裝 GEFORCE 驅動程序的詳細說明。

快速安裝指南

1. 關閉電腦電源，並拔掉主機的電線，並斷開電源開關。

2. 取下系統機殼蓋板，並定位主機板上的 PCI Express x16 插槽。

3. 取下對應插槽的擋板蓋。

4. 將顯示卡穩妥地插入主機板上的 PCI Express x16 插槽，並確保卡與插槽完全接觸。

5. 使用系統機殼蓋板上的螺絲，將顯示卡固定到機殼上。

6. 連接顯示卡所需的 PCI-E 電源線。

7. 重新安裝機殼蓋板，並重新連接主機電源線。

8. 打開電腦電源，並檢查顯示卡是否正常工作。

安裝 GEFORCE 驅動程序

請參閱 GEFORCE 安裝程序以獲取有關安裝 GEFORCE 驅動程序的詳細說明。

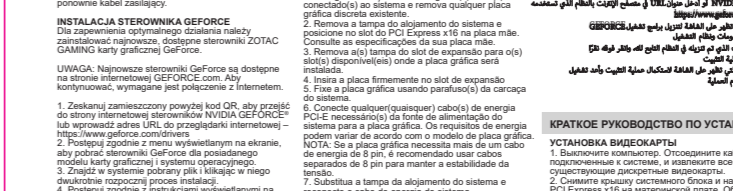
安裝 GEFORCE 驅動程序

請參閱 GEFORCE 安裝程序以獲取有關安裝 GEFORCE 驅動程序的詳細說明。

GEFORCE DRIVER INSTALLATION

PLEASE MAKE SURE TO HAVE THE LATEST AVAILABLE DRIVERS INSTALLED FOR YOUR ZOTAC GAMING GEFORCE GRAPHICS CARD FOR OPTIMAL GAMING PERFORMANCE.

NOTE: The latest GeForce Drivers are available at GEFORCE.com. An Internet connection is required to proceed.



- 1) Scan the above QR code to go to the NVIDIA GEFORCE® Drivers website or enter the URL into your system's Internet browser - <https://www.geforce.com/drivers>
- 2) Follow the onscreen menu to download the GeForce drivers for your graphics card model and OS.
- 3) Locate the downloaded file on your system and double click it to begin the installation process.
- 4) Follow the on-screen instructions to complete the installation and restart the system once done.

快速安裝指南

1. 關閉電腦電源，並拔掉主機的電線，並斷開電源開關。

2. 取下系統機殼蓋板，並定位主機板上的 PCI Express x16 插槽。

3. 取下對應插槽的擋板蓋。

4. 將顯示卡穩妥地插入主機板上的 PCI Express x16 插槽，並確保卡與插槽完全接觸。

5. 使用系統機殼蓋板上的螺絲，將顯示卡固定到機殼上。

6. 連接顯示卡所需的 PCI-E 電源線。

7. 重新安裝機殼蓋板，並重新連接主機電源線。

8. 打開電腦電源，並檢查顯示卡是否正常工作。

安裝 GEFORCE 驅動程序

請參閱 GEFORCE 安裝程序以獲取有關安裝 GEFORCE 驅動程序的詳細說明。

安裝 GEFORCE 驅動程序

請參閱 GEFORCE 安裝程序以獲取有關安裝 GEFORCE 驅動程序的詳細說明。

快速安裝指南

1. 關閉電腦電源，並拔掉主機的電線，並斷開電源開關。

2. 取下系統機殼蓋板，並定位主機板上的 PCI Express x16 插槽。

3. 取下對應插槽的擋板蓋。

4. 將顯示卡穩妥地插入主機板上的 PCI Express x16 插槽，並確保卡與插槽完全接觸。

5. 使用系統機殼蓋板上的螺絲，將顯示卡固定到機殼上。

6. 連接顯示卡所需的 PCI-E 電源線。

7. 重新安裝機殼蓋板，並重新連接主機電源線。

8. 打開電腦電源，並檢查顯示卡是否正常工作。

安裝 GEFORCE 驅動程序

請參閱 GEFORCE 安裝程序以獲取有關安裝 GEFORCE 驅動程序的詳細說明。

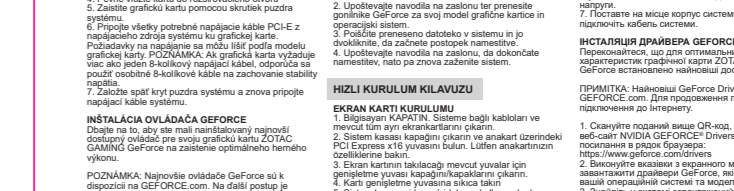
安裝 GEFORCE 驅動程序

請參閱 GEFORCE 安裝程序以獲取有關安裝 GEFORCE 驅動程序的詳細說明。

GEFORCE DRIVER INSTALLATION

PLEASE MAKE SURE TO HAVE THE LATEST AVAILABLE DRIVERS INSTALLED FOR YOUR ZOTAC GAMING GEFORCE GRAPHICS CARD FOR OPTIMAL GAMING PERFORMANCE.

NOTE: The latest GeForce Drivers are available at GEFORCE.com. An Internet connection is required to proceed.



- 1) Scan the above QR code to go to the NVIDIA GEFORCE® Drivers website or enter the URL into your system's Internet browser - <https://www.geforce.com/drivers>
- 2) Follow the onscreen menu to download the GeForce drivers for your graphics card model and OS.
- 3) Locate the downloaded file on your system and double click it to begin the installation process.
- 4) Follow the on-screen instructions to complete the installation and restart the system once done.

快速安裝指南

1. 關閉電腦電源，並拔掉主機的電線，並斷開電源開關。

2. 取下系統機殼蓋板，並定位主機板上的 PCI Express x16 插槽。

3. 取下對應插槽的擋板蓋。

4. 將顯示卡穩妥地插入主機板上的 PCI Express x16 插槽，並確保卡與插槽完全接觸。

5. 使用系統機殼蓋板上的螺絲，將顯示卡固定到機殼上。

6. 連接顯示卡所需的 PCI-E 電源線。

7. 重新安裝機殼蓋板，並重新連接主機電源線。

8. 打開電腦電源，並檢查顯示卡是否正常工作。

安裝 GEFORCE 驅動程序

請參閱 GEFORCE 安裝程序以獲取有關安裝 GEFORCE 驅動程序的詳細說明。

安裝 GEFORCE 驅動程序

請參閱 GEFORCE 安裝程序以獲取有關安裝 GEFORCE 驅動程序的詳細說明。

快速安裝指南

1. 關閉電腦電源，並拔掉主機的電線，並斷開電源開關。

2. 取下系統機殼蓋板，並定位主機板上的 PCI Express x16 插槽。

3. 取下對應插槽的擋板蓋。

4. 將顯示卡穩妥地插入主機板上的 PCI Express x16 插槽，並確保卡與插槽完全接觸。

5. 使用系統機殼蓋板上的螺絲，將顯示卡固定到機殼上。

6. 連接顯示卡所需的 PCI-E 電源線。

7. 重新安裝機殼蓋板，並重新連接主機電源線。

8. 打開電腦電源，並檢查顯示卡是否正常工作。

安裝 GEFORCE 驅動程序

請參閱 GEFORCE 安裝程序以獲取有關安裝 GEFORCE 驅動程序的詳細說明。

安裝 GEFORCE 驅動程序

請參閱 GEFORCE 安裝程序以獲取有關安裝 GEFORCE 驅動程序的詳細說明。

WARRANTY

ZOTAC Technology Limited stands by the quality of its products with a limited warranty. The ZOTAC warranty ensures all products are free of material and workmanship defects from the factory. The warranty applies to the original purchaser and is non-transferable.

The ZOTAC warranty is only applicable under the following conditions:

- A copy of the original sales receipt is kept.
- Damage to the product was not due to user installation.
- User did not damage the product, including abuse, overlocking, natural disaster, negligence, misuse, modifications (cooling included), power supply, damage due to the result of other damaged components, etc.
- Product was used for its intended purpose.

It is up to the original purchaser to obtain warranty service. To submit a ZOTAC graphics card for warranty service, the owner must contact the regional ZOTAC Customer Service where available or the original reseller within the standard warranty period.

All warranty conditions and terms are subject to change without prior notice. For current warranty details, please check our online policies at ZOTAC.COM.

NOTE!
ZOTAC Technology Ltd. reserves the right to void the warranty if:
The product is physically modified, unless otherwise stated.
If user purchased the card second hand.
If user fails to produce a copy of the original sales receipt.
User used the product in a way it was not intended for.

Failure to follow the warranty terms and conditions will result in an automatic void of the ZOTAC warranty. The warranty does not cover normal wear and tear items such as the cooling fan.

Under no circumstances is ZOTAC Technology Ltd. held liable for any lost wages or revenues incurred due to defective or damaged products. ZOTAC Technology Ltd. does not provide any additional warranty for its products except as stated in the warranty terms, whether by implication or merchant liability.



WARRANTY

ZOTAC products come with a standard warranty period. In addition, customers will be entitled to extended product warranty through an online product registration process within a limited time of new product purchase where applicable. ZOTAC reserves the right to change the terms and conditions without advance notice.

Product warranty will not be extended if: (1) the product is repaired, modified or altered, unless such repair, modification or alteration is authorized in writing by ZOTAC Technology Limited, (2) the serial number of the product is damaged or missing, or (3) the customer does not complete the product registration within the registration window of the purchase date. Products can be registered only at ZOTAC.COM.

EXTENDED WARRANTY
Availability and window of time for product registration may vary by product and region. Please refer to the official ZOTAC website for the updated warranty policy.

NOTE!
ZOTAC Technology Ltd. reserves the right to void the warranty if:
The product is physically modified, unless otherwise stated.
If user purchased the card second hand.
If user fails to produce a copy of the original sales receipt.
User used the product in a way it was not intended for.

Failure to follow the warranty terms and conditions will result in an automatic void of the ZOTAC warranty. The warranty does not cover normal wear and tear items such as the cooling fan.

Under no circumstances is ZOTAC Technology Ltd. held liable for any lost wages or revenues incurred due to defective or damaged products. ZOTAC Technology Ltd. does not provide any additional warranty for its products except as stated in the warranty terms, whether by implication or merchant liability.



WARRANTY

ZOTAC products come with a standard warranty period. In addition, customers will be entitled to extended product warranty through an online product registration process within a limited time of new product purchase where applicable. ZOTAC reserves the right to change the terms and conditions without advance notice.

Product warranty will not be extended if: (1) the product is repaired, modified or altered, unless such repair, modification or alteration is authorized in writing by ZOTAC Technology Limited, (2) the serial number of the product is damaged or missing, or (3) the customer does not complete the product registration within the registration window of the purchase date. Products can be registered only at ZOTAC.COM.

EXTENDED WARRANTY
Availability and window of time for product registration may vary by product and region. Please refer to the official ZOTAC website for the updated warranty policy.

NOTE!
ZOTAC Technology Ltd. reserves the right to void the warranty if:
The product is physically modified, unless otherwise stated.
If user purchased the card second hand.
If user fails to produce a copy of the original sales receipt.
User used the product in a way it was not intended for.

Failure to follow the warranty terms and conditions will result in an automatic void of the ZOTAC warranty. The warranty does not cover normal wear and tear items such as the cooling fan.

Under no circumstances is ZOTAC Technology Ltd. held liable for any lost wages or revenues incurred due to defective or damaged products. ZOTAC Technology Ltd. does not provide any additional warranty for its products except as stated in the warranty terms, whether by implication or merchant liability.



WARRANTY

ZOTAC products come with a standard warranty period. In addition, customers will be entitled to extended product warranty through an online product registration process within a limited time of new product purchase where applicable. ZOTAC reserves the right to change the terms and conditions without advance notice.

Product warranty will not be extended if: (1) the product is repaired, modified or altered, unless such repair, modification or alteration is authorized in writing by ZOTAC Technology Limited, (2) the serial number of the product is damaged or missing, or (3) the customer does not complete the product registration within the registration window of the purchase date. Products can be registered only at ZOTAC.COM.

EXTENDED WARRANTY
Availability and window of time for product registration may vary by product and region. Please refer to the official ZOTAC website for the updated warranty policy.

NOTE!
ZOTAC Technology Ltd. reserves the right to void the warranty if:
The product is physically modified, unless otherwise stated.
If user purchased the card second hand.
If user fails to produce a copy of the original sales receipt.
User used the product in a way it was not intended for.

Failure to follow the warranty terms and conditions will result in an automatic void of the ZOTAC warranty. The warranty does not cover normal wear and tear items such as the cooling fan.

Under no circumstances is ZOTAC Technology Ltd. held liable for any lost wages or revenues incurred due to defective or damaged products. ZOTAC Technology Ltd. does not provide any additional warranty for its products except as stated in the warranty terms, whether by implication or merchant liability.



WARRANTY

ZOTAC products come with a standard warranty period. In addition, customers will be entitled to extended product warranty through an online product registration process within a limited time of new product purchase where applicable. ZOTAC reserves the right to change the terms and conditions without advance notice.

Product warranty will not be extended if: (1) the product is repaired, modified or altered, unless such repair, modification or alteration is authorized in writing by ZOTAC Technology Limited, (2) the serial number of the product is damaged or missing, or (3) the customer does not complete the product registration within the registration window of the purchase date. Products can be registered only at ZOTAC.COM.

EXTENDED WARRANTY
Availability and window of time for product registration may vary by product and region. Please refer to the official ZOTAC website for the updated warranty policy.

NOTE!
ZOTAC Technology Ltd. reserves the right to void the warranty if:
The product is physically modified, unless otherwise stated.
If user purchased the card second hand.
If user fails to produce a copy of the original sales receipt.
User used the product in a way it was not intended for.

Failure to follow the warranty terms and conditions will result in an automatic void of the ZOTAC warranty. The warranty does not cover normal wear and tear items such as the cooling fan.

Under no circumstances is ZOTAC Technology Ltd. held liable for any lost wages or revenues incurred due to defective or damaged products. ZOTAC Technology Ltd. does not provide any additional warranty for its products except as stated in the warranty terms, whether by implication or merchant liability.



WARRANTY

ZOTAC products come with a standard warranty period. In addition, customers will be entitled to extended product warranty through an online product registration process within a limited time of new product purchase where applicable. ZOTAC reserves the right to change the terms and conditions without advance notice.

Product warranty will not be extended if: (1) the product is repaired, modified or altered, unless such repair, modification or alteration is authorized in writing by ZOTAC Technology Limited, (2) the serial number of the product is damaged or missing, or (3) the customer does not complete the product registration within the registration window of the purchase date. Products can be registered only at ZOTAC.COM.

EXTENDED WARRANTY
Availability and window of time for product registration may vary by product and region. Please refer to the official ZOTAC website for the updated warranty policy.

NOTE!
ZOTAC Technology Ltd. reserves the right to void the warranty if:
The product is physically modified, unless otherwise stated.
If user purchased the card second hand.
If user fails to produce a copy of the original sales receipt.
User used the product in a way it was not intended for.

Failure to follow the warranty terms and conditions will result in an automatic void of the ZOTAC warranty. The warranty does not cover normal wear and tear items such as the cooling fan.

Under no circumstances is ZOTAC Technology Ltd. held liable for any lost wages or revenues incurred due to defective or damaged products. ZOTAC Technology Ltd. does not provide any additional warranty for its products except as stated in the warranty terms, whether by implication or merchant liability.



WARRANTY

ZOTAC products come with a standard warranty period. In addition, customers will be entitled to extended product warranty through an online product registration process within a limited time of new product purchase where applicable. ZOTAC reserves the right to change the terms and conditions without advance notice.

Product warranty will not be extended if: (1) the product is repaired, modified or altered, unless such repair, modification or alteration is authorized in writing by ZOTAC Technology Limited, (2) the serial number of the product is damaged or missing, or (3) the customer does not complete the product registration within the registration window of the purchase date. Products can be registered only at ZOTAC.COM.

EXTENDED WARRANTY
Availability and window of time for product registration may vary by product and region. Please refer to the official ZOTAC website for the updated warranty policy.

NOTE!
ZOTAC Technology Ltd. reserves the right to void the warranty if:
The product is physically modified, unless otherwise stated.
If user purchased the card second hand.
If user fails to produce a copy of the original sales receipt.
User used the product in a way it was not intended for.

Failure to follow the warranty terms and conditions will result in an automatic void of the ZOTAC warranty. The warranty does not cover normal wear and tear items such as the cooling fan.

Under no circumstances is ZOTAC Technology Ltd. held liable for any lost wages or revenues incurred due to defective or damaged products. ZOTAC Technology Ltd. does not provide any additional warranty for its products except as stated in the warranty terms, whether by implication or merchant liability.



SAFETY

1) Before playing video games
Make sure that the room is well illuminated and lighting is adjusted to the brightness of the monitor. Keep a suitable distance from the display monitor.

2) Static electricity precautions
Do not take the graphics card out from the original static electricity protection package until you are ready to install it. Before installing, wear a grounded wrist strap if possible, or discharge static electricity by touching the bare metal surface of the system chassis. Carefully hold the graphics card by its rear bracket, and avoid touching the "gold finger" PCB edge connector unless it is necessary.

3) Turn on system power before installing the graphics card
Turn on the AC main power to the system, but the AC main power switch or by detaching the AC power cord. Damage to the graphics card or the system components, or injury to you may result if power is turned on during the installation. Please directly a qualified technician if necessary. The manufacturer assumes no liability for any damage, caused directly or indirectly, by improper installation by unauthorized service personnel.

4) Electrical safety
Each graphics card requires a power supply that meets or exceeds a minimum wattage and/or PCIe connectors. High-end graphics cards may feature higher power consumption. Make sure that separate power cables are used on high power draw graphics cards and your power supply is set to the correct voltage for your region.

5) Operation safety
Do not touch the card or block the fans from running while in operation to reduce the risk of injury. Parts such as the backplate and heatsink can be hot to the touch under heavy load. Allow at least 5 minutes to pass after powering down to make sure all components have cooled down for safe handling.

6) Trigger Warning: Photosensitive epilepsy
Extremely pronounced lighting effects such as fast image changes, repetitions of simple geometric shapes, flashes of light may induce epileptic fits or blackouts in some persons. Even persons with no previous known tendency to epilepsy may be in danger. If you or member of your family has been diagnosed as prone to epilepsy, please consult your physician before playing the video game. Parents should monitor their children carefully when they play video games. Stop playing immediately if the following symptoms are detected: nausea, vision disturbance, muscle tension or cramps, orientation problems, involuntary movements or brief loss of consciousness.

SAFETY

1) Before playing video games
Make sure that the room is well illuminated and lighting is adjusted to the brightness of the monitor. Keep a suitable distance from the display monitor.

2) Static electricity precautions
Do not take the graphics card out from the original static electricity protection package until you are ready to install it. Before installing, wear a grounded wrist strap if possible, or discharge static electricity by touching the bare metal surface of the system chassis. Carefully hold the graphics card by its rear bracket, and avoid touching the "gold finger" PCB edge connector unless it is necessary.

3) Turn on system power before installing the graphics card
Turn on the AC main power to the system, but the AC main power switch or by detaching the AC power cord. Damage to the graphics card or the system components, or injury to you may result if power is turned on during the installation. Please directly a qualified technician if necessary. The manufacturer assumes no liability for any damage, caused directly or indirectly, by improper installation by unauthorized service personnel.

4) Electrical safety
Each graphics card requires a power supply that meets or exceeds a minimum wattage and/or PCIe connectors. High-end graphics cards may feature higher power consumption. Make sure that separate power cables are used on high power draw graphics cards and your power supply is set to the correct voltage for your region.

5)